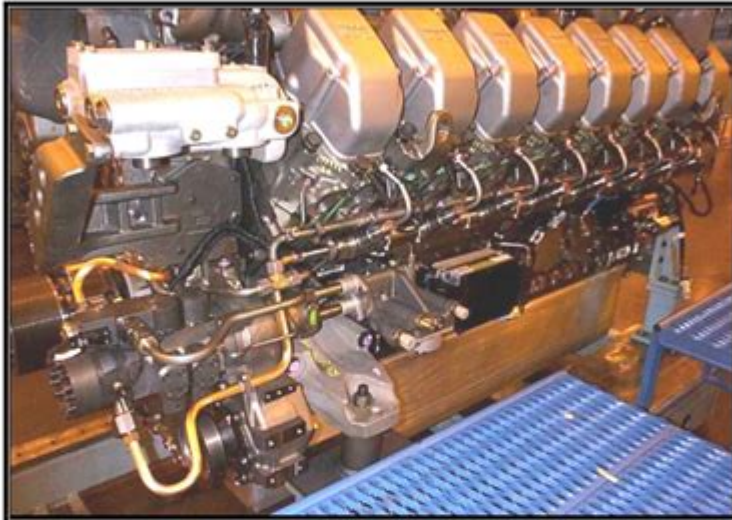


# Detroit Diesel Mtu Series 4000 Adec Manuals

**DETROIT DIESEL**

TECHNICIAN GUIDE



## SERIES 4000 COMMON RAIL FUEL SYSTEM

---

**Detroit Diesel MTU Series 4000 ADEC manuals** are essential resources for anyone involved in the operation, maintenance, and repair of the MTU Series 4000 engines. These manuals serve as comprehensive guides that provide detailed information about the engine's specifications, operational procedures, troubleshooting techniques, and maintenance schedules. In this article, we will delve into the significance of these manuals, the features of the Series 4000 engines, and how to effectively use these resources for optimal engine performance.

## Understanding the Detroit Diesel MTU Series 4000 Engine

The Detroit Diesel MTU Series 4000 engine is a high-performance engine designed for

various applications, including marine, industrial, and power generation. This series is renowned for its reliability, durability, and efficiency, making it a popular choice among operators and fleet managers.

## **Key Features of the Series 4000**

1. **Engine Variants:** The Series 4000 is available in several configurations, including V8, V12, and V16 engines, with power outputs ranging from 800 to 4000 horsepower.
2. **Advanced Electronic Control:** The ADEC (Advanced Diesel Engine Control) system enhances engine performance by optimizing fuel injection, air management, and exhaust treatment processes.
3. **Robust Design:** The engine is designed to endure harsh operating conditions, featuring a sturdy block construction and high-quality materials that provide longevity and reliability.
4. **Fuel Efficiency:** The Series 4000 engines are engineered to maximize fuel efficiency, reducing operational costs while minimizing environmental impact.
5. **Modular Design:** The modular design of the engine allows for easier maintenance and repair, as components can be replaced or serviced with minimal downtime.

## **The Importance of ADEC Manuals**

ADEC manuals are critical for ensuring the proper use and maintenance of the Detroit Diesel MTU Series 4000 engines. These manuals contain a wealth of information designed to assist technicians, engineers, and operators in various aspects of engine management.

## **Contents of the ADEC Manuals**

The ADEC manuals typically include the following sections:

1. **Specifications:** Detailed information about engine dimensions, weights, power ratings, and other technical specifications.
2. **Installation Guidelines:** Instructions for the proper installation of the engine, including alignment, mounting, and connection of auxiliary systems.
3. **Operation Procedures:** Step-by-step guidance on how to operate the engine safely and efficiently, including starting, stopping, and load management procedures.
4. **Maintenance Schedules:** Recommended maintenance intervals and procedures for routine checks, fluid changes, and component inspections.
5. **Troubleshooting:** Diagnostic procedures to identify and resolve common engine issues,

including symptoms, potential causes, and corrective actions.

6. Wiring Diagrams: Schematics that illustrate the electrical systems of the engine, aiding in troubleshooting and repairs.

## **How to Access ADEC Manuals**

Accessing ADEC manuals for the Detroit Diesel MTU Series 4000 engines can be done through various sources:

- Official MTU Website: The MTU website often provides downloadable versions of manuals for users. Checking their online resources is a good starting point.
- Authorized Dealers: Visiting an authorized MTU dealer can provide access to printed manuals and additional technical support.
- Online Forums and Communities: Engine enthusiasts and professionals often share manuals and resources through forums dedicated to diesel engines.
- Service Centers: Authorized MTU service centers may provide access to manuals and offer training sessions for technicians.

## **Utilizing ADEC Manuals for Effective Maintenance**

To ensure the longevity and efficiency of the Detroit Diesel MTU Series 4000 engines, it is crucial to utilize the ADEC manuals effectively. Here are some best practices:

### **1. Regularly Consult the Manual**

Before performing any maintenance or operational tasks, it is advisable to consult the ADEC manual. This practice ensures that all procedures are followed correctly and that the technician is aware of any specific requirements for the engine.

### **2. Follow Maintenance Schedules**

The ADEC manuals provide detailed maintenance schedules that outline when specific tasks should be completed. Adhering to these schedules helps prevent major issues and extends the life of the engine.

### **3. Document Maintenance Activities**

Keeping a log of all maintenance activities as instructed in the manual can be beneficial for future reference. This documentation can help identify patterns that may indicate underlying problems and can be useful when discussing issues with service personnel.

## **4. Utilize Troubleshooting Guides**

In the event of an engine malfunction, the troubleshooting section of the ADEC manual is invaluable. Following the diagnostic steps outlined can help identify the issue quickly, minimizing downtime and repair costs.

## **5. Train Technicians**

Investing in training for technicians on how to effectively use the ADEC manuals can pay dividends. Well-trained personnel can perform maintenance and repairs more efficiently, leading to improved engine performance and reduced operational costs.

## **Conclusion**

In summary, the Detroit Diesel MTU Series 4000 ADEC manuals are indispensable tools for anyone involved with these high-performance engines. By understanding the features of the Series 4000, the importance of the ADEC manuals, and how to utilize them effectively, operators can ensure optimal engine performance, reliability, and longevity. As technology continues to evolve, staying informed and utilizing available resources will remain a key factor in successful engine management.

## **Frequently Asked Questions**

### **What is the Detroit Diesel MTU Series 4000 ADEC engine used for?**

The Detroit Diesel MTU Series 4000 ADEC engine is commonly used in various applications including marine propulsion, power generation, and heavy-duty on-highway vehicles.

### **Where can I find the manual for the Detroit Diesel MTU Series 4000 ADEC?**

The manual for the Detroit Diesel MTU Series 4000 ADEC can typically be found on the official MTU website or through authorized dealers and service centers.

### **What are the key features of the Series 4000 ADEC**

## **engine?**

Key features of the Series 4000 ADEC engine include high power density, low emissions, advanced electronic controls, and modular design for easier maintenance.

## **How do I perform routine maintenance on the Series 4000 ADEC engine?**

Routine maintenance includes checking and replacing filters, oil changes, inspecting belts and hoses, and ensuring the cooling system is functioning properly, as outlined in the service manual.

## **What troubleshooting tips are available for the Series 4000 ADEC?**

Troubleshooting tips include checking error codes via the engine control module, inspecting fuel supply lines, and ensuring all electrical connections are secure, as detailed in the technical manual.

## **What is the recommended oil type for the Series 4000 ADEC engine?**

The recommended oil type for the Series 4000 ADEC engine is typically a high-quality synthetic or semi-synthetic diesel engine oil that meets the specifications outlined in the engine manual.

## **How can I access the diagnostic features of the Series 4000 ADEC?**

Diagnostic features can be accessed using the MTU engine diagnostic tools or software, which can read fault codes and monitor engine parameters in real time.

## **What are common issues faced with the Series 4000 ADEC engines?**

Common issues may include fuel system problems, overheating, electrical faults, and turbocharger failures, which can be addressed by following the troubleshooting guidelines in the manual.

## **Is there a digital version of the Series 4000 ADEC manual available?**

Yes, a digital version of the Series 4000 ADEC manual is often available for download from the manufacturer's website or through online service platforms.

## **What safety precautions should be taken when**

## **servicing the Series 4000 ADEC engine?**

Safety precautions include wearing appropriate personal protective equipment, ensuring the engine is off and cool before servicing, and following lockout/tagout procedures as specified in the manual.

Find other PDF article:

<https://soc.up.edu.ph/17-scan/files?ID=fpE52-2677&title=dig-watering-timer-manual.pdf>

## **Detroit Diesel Mtu Series 4000 Adec Manuals**

Detroit - Wikipedia

Detroit (/ dɪˈtrɔɪt / ⓘ dih-TROYT, locally also / ˈdiːtrɔɪt / DEE-troyt) [8] is the most populous city in the U.S. state of Michigan. It is situated on the bank of the Detroit River across from the ...

Start Your Detroit Trip Here | Official Travel & Tourism Website for ...

Whether you're exploring historic neighborhoods or the scenic waterfront, Detroit has something for everyone. From yacht cruises and pub crawls to home tours and bike rides, the city offers a ...

### **THE 15 BEST Things to Do in Detroit (2025) - Tripadvisor**

Things to Do in Detroit, Michigan: See Tripadvisor's 100,741 traveler reviews and photos of Detroit tourist attractions. Find what to do today, this weekend, or in August.

### **The 20 best things to do in Detroit - Lonely Planet**

Jul 19, 2025 · Detroit is a city of street art, architecture and Americana. Here are some of the best things to explore.

### **Detroit | Michigan's Largest City & US Automotive Hub | Britannica**

6 days ago · Detroit, city, seat of Wayne county, southeastern Michigan, U.S. It is located on the Detroit River (connecting Lakes Erie and St. Clair) opposite Windsor, Ontario, Canada.

### **Detroit, Michigan 2025 | Ultimate Guide To Where To Go, Eat**

Detroit is packed with great things to do and places to go. But where do you begin? Cut through the noise with Time Out's recommendations of the best attractions, restaurants, bars, nightlife and...

### **Detroit | Michigan**

Located in southeastern Michigan, Detroit is the largest city in the state, the 10th largest city in the United States and the eighth largest metropolitan area.

### **Detroit, MI: All You Need to Know Before You Go (2025) - Tripadvisor**

Detroit Tourism: Tripadvisor has 100,718 reviews of Detroit Hotels, Attractions, and Restaurants making it your best Detroit travel resource.

### **Detroit, Michigan Travel and Vacation Guide - Visitor Information**

Complete travel and vacation information for Detroit, Michigan with maps, photos, sightseeing, hotel reservations and more.

## **50 Facts About Detroit - OhMyFacts**

Jun 18, 2025 · Detroit, often called the "Motor City," has a rich history filled with innovation, culture, and resilience. Did you know Detroit was the birthplace of Motown music? This city has shaped ...

### *Detroit - Wikipedia*

Detroit (/ dɪˈtroɪt / ⓘ dih-TROYT, locally also / ˈdiːtroɪt / DEE-troyt) [8] is the most populous city in the U.S. state of Michigan. It is situated on the bank of the Detroit River across from the ...

## **Start Your Detroit Trip Here | Official Travel & Tourism Website for ...**

Whether you're exploring historic neighborhoods or the scenic waterfront, Detroit has something for everyone. From yacht cruises and pub crawls to home tours and bike rides, the city offers a ...

### THE 15 BEST Things to Do in Detroit (2025) - Tripadvisor

Things to Do in Detroit, Michigan: See Tripadvisor's 100,741 traveler reviews and photos of Detroit tourist attractions. Find what to do today, this weekend, or in August.

## **The 20 best things to do in Detroit - Lonely Planet**

Jul 19, 2025 · Detroit is a city of street art, architecture and Americana. Here are some of the best things to explore.

## **Detroit | Michigan's Largest City & US Automotive Hub | Britannica**

6 days ago · Detroit, city, seat of Wayne county, southeastern Michigan, U.S. It is located on the Detroit River (connecting Lakes Erie and St. Clair) opposite Windsor, Ontario, Canada.

## **Detroit, Michigan 2025 | Ultimate Guide To Where To Go, Eat**

Detroit is packed with great things to do and places to go. But where do you begin? Cut through the noise with Time Out's recommendations of the best attractions, restaurants, bars, nightlife ...

### *Detroit | Michigan*

Located in southeastern Michigan, Detroit is the largest city in the state, the 10th largest city in the United States and the eighth largest metropolitan area.

### Detroit, MI: All You Need to Know Before You Go (2025) - Tripadvisor

Detroit Tourism: Tripadvisor has 100,718 reviews of Detroit Hotels, Attractions, and Restaurants making it your best Detroit travel resource.

## **Detroit, Michigan Travel and Vacation Guide - Visitor Information**

Complete travel and vacation information for Detroit, Michigan with maps, photos, sightseeing, hotel reservations and more.

## **50 Facts About Detroit - OhMyFacts**

Jun 18, 2025 · Detroit, often called the "Motor City," has a rich history filled with innovation, culture, and resilience. Did you know Detroit was the birthplace of Motown music? This city ...

Unlock the power of your Detroit Diesel MTU Series 4000 ADEC with our comprehensive manuals. Discover how to optimize performance and maintenance today!

[Back to Home](#)