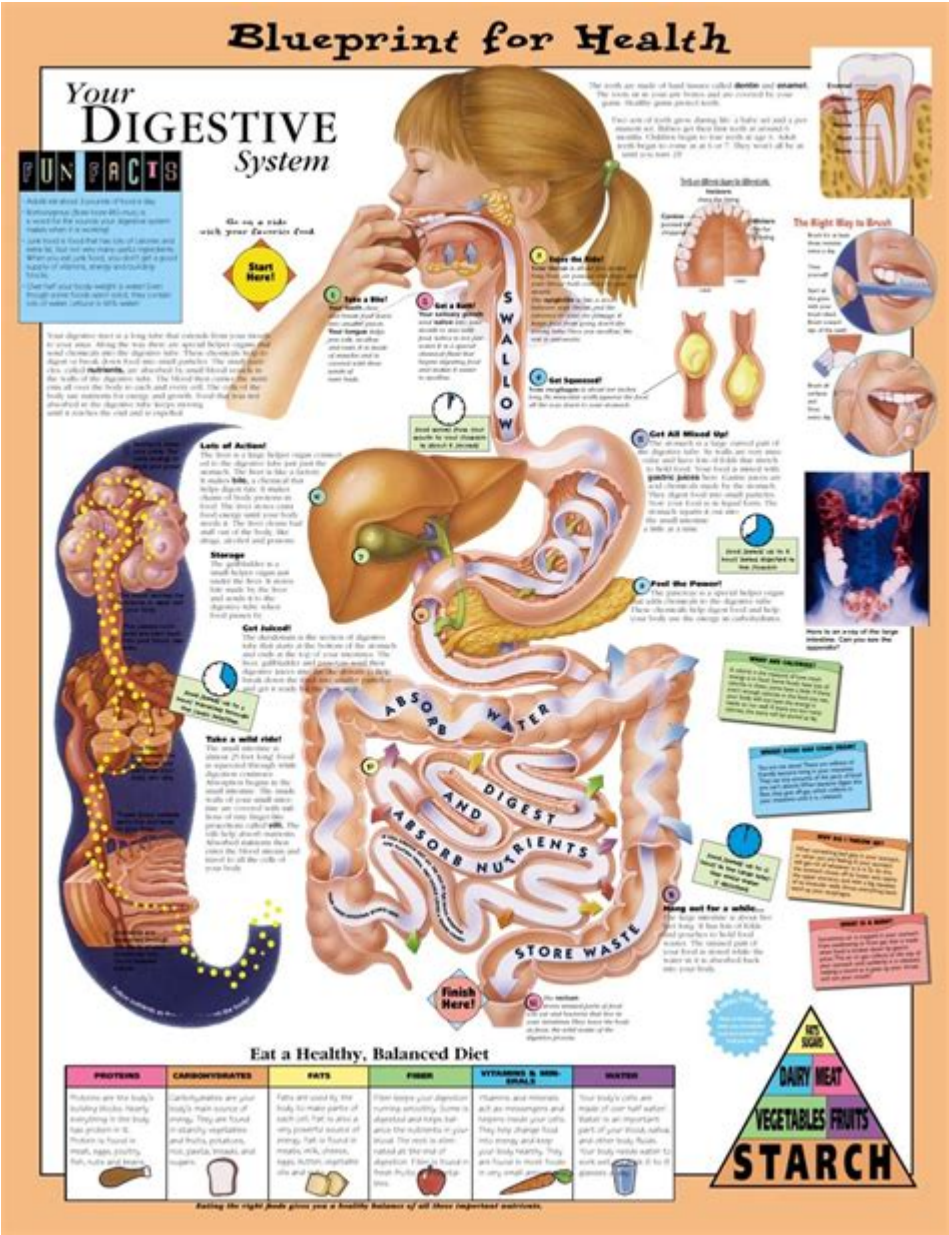


# Diseases Of The Digestive System Chart



Diseases of the digestive system chart is an essential tool for both medical professionals and patients to understand the various conditions that can affect the gastrointestinal tract. The digestive system is responsible for breaking down food, absorbing nutrients, and eliminating waste. When things go awry, it can lead to a host of diseases that can significantly impact an individual's quality of life. In this article, we will explore various diseases of the digestive system, their causes, symptoms, diagnosis, treatment options, and preventive measures.

## Overview of the Digestive System

The digestive system is a complex network that includes several organs, each

playing a crucial role in processing food. The primary components of the digestive system include:

1. Mouth: Where digestion begins with chewing and saliva.
2. Esophagus: The tube that carries food from the mouth to the stomach.
3. Stomach: A muscular sac that further breaks down food using acids and enzymes.
4. Small Intestine: The primary site for nutrient absorption, consisting of the duodenum, jejunum, and ileum.
5. Large Intestine: Responsible for absorbing water and forming waste.
6. Liver: Produces bile, which helps digest fats.
7. Pancreas: Produces digestive enzymes and hormones.
8. Gallbladder: Stores bile produced by the liver.

Understanding the structure and function of these organs is vital when reviewing the diseases of the digestive system chart.

## **Common Diseases of the Digestive System**

There are numerous diseases that can afflict the digestive system, each with unique symptoms and treatment protocols. Below are some of the most common conditions.

### **1. Gastroesophageal Reflux Disease (GERD)**

GERD is a chronic condition where stomach acid flows back into the esophagus, causing irritation.

Symptoms:

- Heartburn
- Regurgitation
- Chest pain
- Difficulty swallowing

Causes:

- Weak lower esophageal sphincter
- Obesity
- Pregnancy
- Smoking

Diagnosis:

- Endoscopy
- pH monitoring
- Esophageal motility tests

Treatment:

- Lifestyle changes (diet, weight loss)

- Medications (antacids, H2 blockers, proton pump inhibitors)
- Surgery in severe cases

## **2. Inflammatory Bowel Disease (IBD)**

IBD encompasses two main disorders: Crohn's disease and ulcerative colitis, both characterized by chronic inflammation of the gastrointestinal tract.

Symptoms:

- Abdominal pain
- Diarrhea (often bloody)
- Fatigue
- Weight loss

Causes:

- Genetic factors
- Immune system dysfunction
- Environmental triggers

Diagnosis:

- Colonoscopy
- Blood tests
- Imaging studies (CT scans, MRIs)

Treatment:

- Anti-inflammatory medications
- Immunosuppressants
- Biologic therapies
- Surgery in severe cases

## **3. Celiac Disease**

Celiac disease is an autoimmune disorder where ingestion of gluten leads to damage in the small intestine.

Symptoms:

- Diarrhea
- Bloating
- Fatigue
- Skin rash (dermatitis herpetiformis)

Causes:

- Genetic predisposition
- Immune response to gluten

Diagnosis:

- Blood tests for specific antibodies

- Small intestine biopsy

Treatment:

- Lifelong gluten-free diet

## 4. Gallstones

Gallstones are hardened deposits that form in the gallbladder, often causing pain and digestive issues.

Symptoms:

- Severe pain in the upper right abdomen
- Nausea and vomiting
- Indigestion

Causes:

- Excess cholesterol or bilirubin
- Gallbladder not emptying properly

Diagnosis:

- Ultrasound
- CT scan

Treatment:

- Observation for mild cases
- Medications to dissolve stones
- Surgery (cholecystectomy) for severe cases

## 5. Peptic Ulcer Disease

Peptic ulcers are sores that develop on the lining of the stomach or the duodenum, often caused by *H. pylori* infection or long-term use of NSAIDs.

Symptoms:

- Burning stomach pain
- Bloating
- Nausea
- Indigestion

Causes:

- *H. pylori* infection
- Use of NSAIDs
- Excessive alcohol consumption

Diagnosis:

- Endoscopy
- Upper GI series

Treatment:

- Antibiotics for H. pylori
- Proton pump inhibitors
- Antacids

## **6. Irritable Bowel Syndrome (IBS)**

IBS is a functional gastrointestinal disorder characterized by abdominal pain and changes in bowel habits.

Symptoms:

- Cramping
- Diarrhea or constipation (or alternating)
- Bloating

Causes:

- Unknown, but can be triggered by stress, food, and hormonal changes.

Diagnosis:

- Exclusion of other conditions (no specific tests)

Treatment:

- Dietary modifications (low FODMAP diet)
- Medications (antispasmodics, laxatives)
- Psychological therapies

## **Prevention and Management of Digestive Diseases**

While not all conditions are preventable, there are several lifestyle changes and strategies that can help reduce the risk of developing digestive diseases.

### **Healthy Diet**

- High in fiber (fruits, vegetables, whole grains)
- Low in processed foods and sugars
- Adequate hydration

### **Regular Exercise**

- Aim for at least 150 minutes of moderate aerobic activity per week.

## **Avoid Harmful Substances**

- Limit alcohol consumption
- Quit smoking

## **Regular Check-ups**

- Schedule routine screenings, especially for high-risk individuals.

## **Stress Management**

- Practice relaxation techniques such as yoga or meditation.

## **Conclusion**

The diseases of the digestive system chart serves as a vital resource for understanding the various conditions that can affect our gastrointestinal health. From GERD to IBD, each disease comes with its unique set of challenges and treatment options. By being aware of these diseases, their symptoms, and preventive measures, individuals can take proactive steps toward maintaining their digestive health. If you experience any persistent digestive issues, it is essential to consult with a healthcare professional for appropriate diagnosis and management.

## **Frequently Asked Questions**

### **What are common diseases included in a digestive system chart?**

Common diseases include gastroesophageal reflux disease (GERD), irritable bowel syndrome (IBS), Crohn's disease, ulcerative colitis, and celiac disease.

### **How does a digestive system chart help in understanding diseases?**

A digestive system chart visually represents the organs involved in digestion, helping to identify where diseases may occur and how they affect overall health.

### **What symptoms are associated with digestive system**

## **diseases?**

Symptoms can include abdominal pain, bloating, diarrhea, constipation, nausea, and vomiting.

## **Can a digestive system chart be used for educational purposes?**

Yes, it is widely used in medical education to teach students about the anatomy and function of the digestive system and related diseases.

## **What role does diet play in digestive diseases?**

Diet can significantly impact digestive health; certain foods can exacerbate conditions like IBS or GERD, while others may promote healing.

## **Are there any visual aids that accompany a digestive system chart?**

Yes, charts often include illustrations of the digestive organs, diagrams of the digestive process, and images of common diseases affecting the digestive system.

## **How frequently should one refer to a digestive system chart?**

It's useful to refer to a digestive system chart whenever studying digestive health, understanding symptoms, or preparing for discussions with healthcare professionals.

## **What is the significance of understanding the anatomy of the digestive system?**

Understanding the anatomy helps in diagnosing diseases, understanding their progression, and developing effective treatment plans.

## **Can digestive system diseases be prevented?**

Many digestive diseases can be prevented or managed through a healthy diet, regular exercise, and avoiding known irritants such as smoking and excessive alcohol.

## **What tools are available for healthcare professionals to explain digestive diseases?**

In addition to charts, healthcare professionals use models, digital animations, and interactive software to explain digestive diseases effectively.

Find other PDF article:

<https://soc.up.edu.ph/05-pen/pdf?dataid=PVs37-3448&title=alien-periodic-table-worksheet-answer-key.pdf>

## **Diseases Of The Digestive System Chart**

### **All Diseases and Conditions | NIAMS**

May 21, 2025 · NIAMS research focuses on arthritis & musculoskeletal & skin diseases. Learn about symptoms , causes, & treatment for more than 50 diseases and conditions.

### **Seventy-eighth World Health Assembly - Daily update: 24 May 2025**

May 24, 2025 · The Resolution urges countries to integrate rare diseases into national health planning, improve diagnosis and care through universal health coverage, promote inclusive ...

### Diseases - World Health Organization (WHO)

When autocomplete results are available use up and down arrows to review and enter to select.

### **Noncommunicable diseases - World Health Organization (WHO)**

Dec 23, 2024 · Noncommunicable diseases (NCDs), also known as chronic diseases, are not passed from person to person. They are of long duration and generally slow progression. The four main ...

### **International Classification of Diseases (ICD)**

This includes lossless mapping of MedDRA (Medical Dictionary for Regulatory Activities) to facilitate accurate reporting of drug-related information, embedding medical device nomenclature for ...

### *Health topics - World Health Organization (WHO)*

Childhood cancer Children's environmental health Cholera Non-communicable diseases

### *New data: noncommunicable diseases cause 1.8 million avoidable ...*

Jun 27, 2025 · Noncommunicable diseases (NCDs) remain the leading cause of death and disability in the world, including in the WHO European Region. Here, 1 in 5 men and 1 in 10 women die ...

### **World Health Organization (WHO)**

Jul 15, 2025 · The United Nations agency working to promote health, keep the world safe and serve the vulnerable.

### **Vector-borne diseases - World Health Organization (WHO)**

Sep 26, 2024 · WHO fact sheet on vector-borne diseases, including key facts, overview, and WHO response. Vector-borne diseases are illnesses caused by pathogens and parasites in human ...

### Noncommunicable diseases - World Health Organization (WHO)

Jun 4, 2025 · Noncommunicable diseases (NCDs), including heart disease, stroke, cancer, diabetes and chronic lung disease, are collectively responsible for 74% of all deaths worldwide. More than ...

### All Diseases and Conditions | NIAMS

May 21, 2025 · NIAMS research focuses on arthritis & musculoskeletal & skin diseases. Learn about symptoms , causes, & treatment for more than 50 diseases and conditions.



*Seventy-eighth World Health Assembly - Daily update: 24 May 2025*

May 24, 2025 · The Resolution urges countries to integrate rare diseases into national health planning, improve diagnosis and care through universal health coverage, promote inclusive ...

#### Diseases - World Health Organization (WHO)

When autocomplete results are available use up and down arrows to review and enter to select.

#### Noncommunicable diseases - World Health Organization (WHO)

Dec 23, 2024 · Noncommunicable diseases (NCDs), also known as chronic diseases, are not passed from person to person. They are of long duration and generally slow progression. The ...

#### International Classification of Diseases (ICD)

This includes lossless mapping of MedDRA (Medical Dictionary for Regulatory Activities) to facilitate accurate reporting of drug-related information, embedding medical device ...

#### **Health topics - World Health Organization (WHO)**

Childhood cancer Children's environmental health Cholera Non-communicable diseases

*New data: noncommunicable diseases cause 1.8 million avoidable ...*

Jun 27, 2025 · Noncommunicable diseases (NCDs) remain the leading cause of death and disability in the world, including in the WHO European Region. Here, 1 in 5 men and 1 in 10 ...

#### *World Health Organization (WHO)*

Jul 15, 2025 · The United Nations agency working to promote health, keep the world safe and serve the vulnerable.

#### **Vector-borne diseases - World Health Organization (WHO)**

Sep 26, 2024 · WHO fact sheet on vector-borne diseases, including key facts, overview, and WHO response. Vector-borne diseases are illnesses caused by pathogens and parasites in ...

#### **Noncommunicable diseases - World Health Organization (WHO)**

Jun 4, 2025 · Noncommunicable diseases (NCDs), including heart disease, stroke, cancer, diabetes and chronic lung disease, are collectively responsible for 74% of all deaths ...

Explore our comprehensive diseases of the digestive system chart. Understand symptoms

[Back to Home](#)