

Dichotomous Key Practice Answer Key

Name: _____

Date: _____

Insect Dichotomous Key Worksheet

1



2



3



4



5



6



Name the Orders:

Common Names

1. _____
2. _____
3. _____
4. _____
5. _____
6. _____

Scientific Order

1. _____
2. _____
3. _____
4. _____
5. _____
6. _____

13. Why is a dragonfly NOT a fly? _____



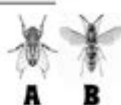
14. Name the insect order that has a sucking beak? _____

15. In which order does the long pair of hind wings fold with a hinge to lie underneath the front wings? _____

16. In which order do many species have ears? _____

17. Which of these insects, A or B might sting you? _____

How do you know this? _____



18. Which order has a coiled tube for sucking up nectar from flowers?

19. Why is a ladybug NOT a bug? _____



dichotomous key practice answer key is an essential tool for students, educators, and biology enthusiasts alike. A dichotomous key is a systematic method for identifying organisms, based on a series of choices that lead the user to the correct name of a given item. In this article, we will explore what a dichotomous key is, how to use one effectively, and provide a practice answer key to enhance your understanding.

What is a Dichotomous Key?

A dichotomous key is a structured tool that provides a series of choices between two distinct options.

It helps users identify unknown organisms by narrowing down the possibilities through a systematic approach. Each choice leads to another pair of choices until a final identification is reached. This method is particularly useful in biology for classifying plants, animals, and microorganisms.

Components of a Dichotomous Key

A well-constructed dichotomous key typically consists of:

1. **Organism Characteristics:** Descriptive traits that differentiate organisms, such as color, size, shape, and behavior.
2. **Numbered Steps:** Each pair of choices is usually numbered, guiding the user through the identification process methodically.
3. **Final Identification:** The end result provides the scientific name or common name of the organism based on the choices made.

How to Use a Dichotomous Key

Using a dichotomous key effectively involves a few straightforward steps. Follow these guidelines to ensure accurate identification:

Step 1: Observation

Before you begin using the key, carefully observe the organism you are trying to identify. Take note of its physical characteristics, habitat, and behavior. This initial observation is crucial for making informed choices.

Step 2: Start at the Beginning

Always start at the first step of the dichotomous key. Read the two options provided and choose the one that best matches your observations. This decision will lead you to the next set of choices.

Step 3: Follow the Path

Continue making choices based on the characteristics of the organism until you reach the final identification. It's essential to be systematic and thorough, as missing a step can lead to incorrect identification.

Step 4: Verify Your Identification

Once you arrive at a conclusion, it's a good idea to verify your identification. Cross-reference with other resources, such as field guides or online databases, to confirm that you have correctly identified the organism.

Benefits of Practicing with a Dichotomous Key

Practicing with a dichotomous key can yield numerous benefits for learners:

1. **Enhances Observation Skills:** Users become more adept at noticing fine details in organisms, which is crucial for accurate identification.
2. **Improves Critical Thinking:** The process requires logical reasoning and decision-making, honing analytical skills.
3. **Fosters a Deeper Understanding of Biodiversity:** Engaging with different organisms leads to a greater appreciation of ecological diversity and relationships.
4. **Prepares for Advanced Studies:** Mastering this tool lays a strong foundation for further studies in biology, ecology, and environmental science.

Dichotomous Key Practice Exercise

To reinforce understanding, here's a practice exercise using a simplified dichotomous key. As you work through the key, write down your choices and the final identification.

Practice Dichotomous Key

1. Is the organism a plant or an animal?
 - A) Plant (go to step 2)
 - B) Animal (go to step 5)
2. Does the plant have flowers?
 - A) Yes (go to step 3)
 - B) No (go to step 4)
3. Are the flowers red or pink?
 - A) Yes (Identify as a Rose)
 - B) No (Identify as a Daisy)
4. Is the plant a fern?
 - A) Yes (Identify as a Fern)
 - B) No (Identify as a Moss)
5. Is the animal a vertebrate or an invertebrate?
 - A) Vertebrate (go to step 6)
 - B) Invertebrate (go to step 8)
6. Does the animal have scales?

- A) Yes (Identify as a Fish)
- B) No (go to step 7)

7. Does the animal have feathers?

- A) Yes (Identify as a Bird)
- B) No (Identify as a Mammal)

8. Does the invertebrate have a shell?

- A) Yes (Identify as a Mollusk)
- B) No (Identify as an Insect)

Answer Key for Practice Exercise

- If you started with a plant:
 - Flowering plant with red or pink flowers = Rose
 - Flowering plant with other colors = Daisy
 - Non-flowering plant that is a fern = Fern
 - Non-flowering plant that is not a fern = Moss
- If you started with an animal:
 - Vertebrate with scales = Fish
 - Vertebrate without scales but with feathers = Bird
 - Vertebrate without scales or feathers = Mammal
 - Invertebrate with a shell = Mollusk
 - Invertebrate without a shell = Insect

Conclusion

In summary, the **dichotomous key practice answer key** serves as a valuable resource for anyone looking to enhance their skills in organism identification. By understanding the structure and function of a dichotomous key, and practicing with a variety of organisms, users can develop critical observation and reasoning skills. Whether you are a student, teacher, or nature enthusiast, mastering this tool will deepen your appreciation of the natural world and improve your ability to navigate its complexities.

Frequently Asked Questions

What is a dichotomous key and how is it used in biological classification?

A dichotomous key is a tool that allows the user to identify organisms by answering a series of questions, each with two possible answers. It is commonly used in biology to classify plants and animals based on their characteristics.

How can I practice using a dichotomous key effectively?

To practice using a dichotomous key effectively, start with simple organisms, read each question carefully, and make sure to understand the characteristics being described. You can also use online resources or worksheets that provide a variety of examples to identify.

What are some common mistakes to avoid when using a dichotomous key?

Common mistakes include misreading the questions, skipping steps, or not paying attention to specific characteristics. It's important to take your time and ensure that each choice aligns with the organism being identified.

Where can I find answer keys for dichotomous key practice exercises?

Answer keys for dichotomous key practice exercises can often be found in biology textbooks, educational websites, or by requesting them from teachers or instructors. Some online platforms also provide interactive dichotomous keys with instant feedback.

Can dichotomous keys be used for both plants and animals?

Yes, dichotomous keys can be used for both plants and animals. They are versatile tools that can classify any type of organism based on observable traits, making them valuable in various fields of biology.

Find other PDF article:

<https://soc.up.edu.ph/55-pitch/Book?trackid=Amf23-6067&title=standard-method-of-measurement-of-building-works-seventh-edition.pdf>

Dichotomous Key Practice Answer Key

WIPO - WIPO

WIPO is the world intellectual property organization. It was established in 1996 and is based in Geneva, Switzerland. It is a specialized agency of the United Nations. It is responsible for administering the world intellectual property system. It is also responsible for promoting the use of intellectual property. It is also responsible for providing technical assistance to developing countries. It is also responsible for conducting research and statistics on intellectual property. It is also responsible for providing information on intellectual property. It is also responsible for providing legal advice on intellectual property. It is also responsible for providing training on intellectual property. It is also responsible for providing public relations on intellectual property. It is also responsible for providing other services on intellectual property.

WIPO is the world intellectual property organization. It was established in 1996 and is based in Geneva, Switzerland. It is a specialized agency of the United Nations. It is responsible for administering the world intellectual property system. It is also responsible for promoting the use of intellectual property. It is also responsible for providing technical assistance to developing countries. It is also responsible for conducting research and statistics on intellectual property. It is also responsible for providing information on intellectual property. It is also responsible for providing legal advice on intellectual property. It is also responsible for providing training on intellectual property. It is also responsible for providing public relations on intellectual property. It is also responsible for providing other services on intellectual property.

WIPO is the world intellectual property organization. It was established in 1996 and is based in Geneva, Switzerland. It is a specialized agency of the United Nations. It is responsible for administering the world intellectual property system. It is also responsible for promoting the use of intellectual property. It is also responsible for providing technical assistance to developing countries. It is also responsible for conducting research and statistics on intellectual property. It is also responsible for providing information on intellectual property. It is also responsible for providing legal advice on intellectual property. It is also responsible for providing training on intellectual property. It is also responsible for providing public relations on intellectual property. It is also responsible for providing other services on intellectual property.

wipe 2022 - YouTube

WIPO is the world intellectual property organization. It was established in 1996 and is based in Geneva, Switzerland. It is a specialized agency of the United Nations. It is responsible for administering the world intellectual property system. It is also responsible for promoting the use of intellectual property. It is also responsible for providing technical assistance to developing countries. It is also responsible for conducting research and statistics on intellectual property. It is also responsible for providing information on intellectual property. It is also responsible for providing legal advice on intellectual property. It is also responsible for providing training on intellectual property. It is also responsible for providing public relations on intellectual property. It is also responsible for providing other services on intellectual property.

Distance Learning Courses

Aug 18, 2019 ·

Accessible IP Courses is a new service provided by the WIPO Academy to facilitate access to basic intellectual property (IP) knowledge for persons who are blind, visually impaired, or ...

2021

[Fox News - Breaking News Updates | Latest News Headlines ...](#)
Breaking News, Latest News and Current News from FOXNews.com. Breaking news and video. Latest Current News: U.S., World, Entertainment, Health, Business, Technology, Politics, Sports.

[Politics, Policy and Political News & Updates | Fox News](#)
Presidential politics and political news from foxnews.com. News about political parties, political campaigns, world and international politics, politics news headlines plus in-depth features and ...

[Fox News Breaking News & Articles | Fox News](#)
Read the top stories happening now with Fox News. Discover the breaking news going on today and watch the latest videos with Fox. Click any of the trending news articles below to learn more.

Fox News Go | Watch Fox News Live Online
Fox News Go Watch FOX News Channel and FOX Business Network 24/7 live from your desktop, tablet and smart phone. Enjoy whenever and wherever you go, and it's all included in your TV ...

[Latest Breaking News Videos | Fox News Video](#)
Discover the latest breaking news videos from Fox News. From politics to entertainment Fox News has the most up-to-date videos that you can watch now.

My Fox Login - Sign In To Your Fox News Account

Sign in to your My Fox News account today!

Fox News - YouTube

FOX News Channel (FNC) is a 24-hour all-encompassing news service dedicated to delivering breaking news as well as political and business news. A top cable network in both total ...

Fox News - Wikipedia

Fox News Latino is the version aimed at a Hispanic audience, although presented almost entirely in English, with a Spanish section. [101] According to NewsGuard, "Much of FoxNews.com's ...

Fox Nation: Start Your Free Trial | Shows, Documentaries, & Specials

Fox Nation is an entertainment streaming service brought to you by FOX News. Stream exclusive shows, documentaries, and news stories that celebrate America.

Fox News - Facebook

Fox News. 19,160,668 likes · 5,693,819 talking about this. Welcome to the official Fox News Facebook page. Get breaking news, must see videos & exclusive interviews from the #1 name ...

Unlock the secrets of identification with our dichotomous key practice answer key. Enhance your skills and confidence—learn more for effective practice today!

[Back to Home](#)