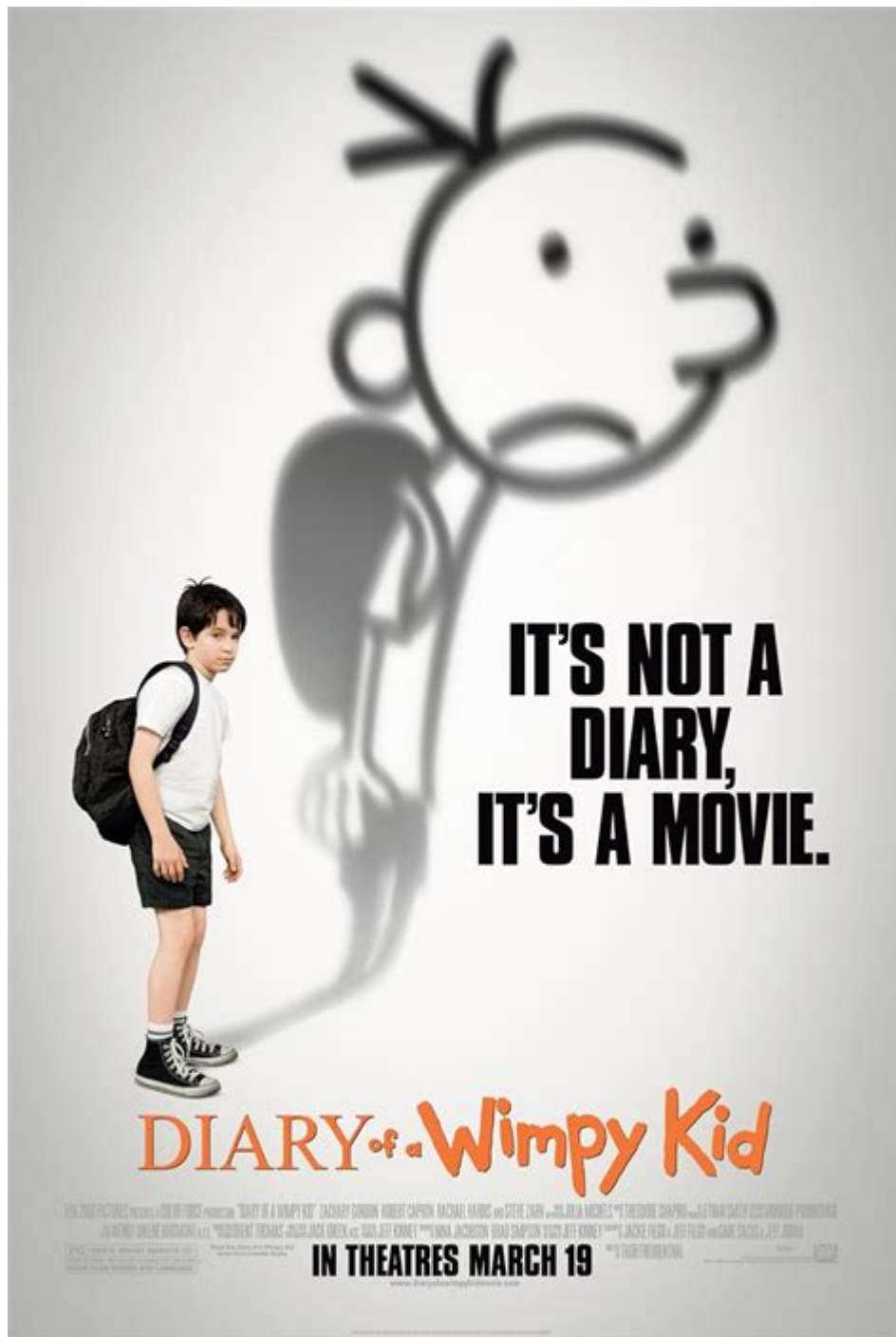


# Diary Of A Wimpy Kid Boy



**DIARY OF A WIMPY KID BOY** IS A TERM THAT RESONATES WITH READERS OF ALL AGES, PARTICULARLY CHILDREN AND PRE-TEENS WHO HAVE GROWN UP WITH THE ICONIC SERIES WRITTEN AND ILLUSTRATED BY JEFF KINNEY. SINCE ITS LAUNCH IN 2004, THE SERIES HAS CAPTIVATED MILLIONS WITH ITS RELATABLE CHARACTERS, HUMOROUS STORYTELLING, AND UNIQUE DIARY FORMAT. THE PROTAGONIST, GREG HEFFLEY, EMBODIES THE TRIALS AND TRIBULATIONS OF ADOLESCENCE, MAKING HIM A QUINTESSENTIAL FIGURE IN CHILDREN'S LITERATURE. THIS ARTICLE DELVES INTO THE WORLD OF THE "DIARY OF A WIMPY KID" SERIES, EXPLORING ITS CHARACTERS, THEMES, AND IMPACT ON READERS.

# OVERVIEW OF THE SERIES

THE “DIARY OF A WIMPY KID” SERIES FOLLOWS THE LIFE OF GREG HEFFLEY, A MIDDLE SCHOOL STUDENT WHO NAVIGATES THE CHALLENGES OF GROWING UP. THE BOOKS ARE PRESENTED IN A DIARY FORMAT, WITH GREG’S HANDWRITTEN NOTES AND SIMPLE YET EXPRESSIVE ILLUSTRATIONS. THIS FORMAT NOT ONLY APPEALS TO YOUNG READERS BUT ALSO ENHANCES THE RELATABILITY OF GREG’S EXPERIENCES.

## KEY ELEMENTS OF THE SERIES

1. RELATABLE CHARACTERS:
  - GREG HEFFLEY: THE MAIN CHARACTER, WHOSE THOUGHTS AND FEELINGS ARE OFTEN HUMOROUS AND EXAGGERATED, MAKING HIM RELATABLE TO KIDS FACING SIMILAR SITUATIONS.
  - ROWLEY JEFFERSON: GREG’S BEST FRIEND, WHO IS OFTEN SEEN AS NAIVE AND GOOFY, PROVIDING COMIC RELIEF AND A CONTRAST TO GREG’S MORE CYNICAL OUTLOOK.
  - RODRICK HEFFLEY: GREG’S OLDER BROTHER, WHO OFTEN BULLIES HIM BUT ALSO REPRESENTS THE TYPICAL TEENAGE REBELLION.
2. HUMOR AND SATIRE: THE SERIES IS KNOWN FOR ITS LIGHTEARTED HUMOR, OFTEN POKING FUN AT THE AWKWARDNESS OF ADOLESCENCE. KINNEY EMPLOYS SATIRE TO ADDRESS COMMON ISSUES SUCH AS BULLYING, PEER PRESSURE, AND THE CHALLENGES OF FITTING IN.
3. ILLUSTRATIONS: THE SIMPLE DRAWINGS COMPLEMENT THE TEXT AND ADD A VISUAL ELEMENT THAT ENHANCES THE STORYTELLING. KINNEY’S STYLE IS ACCESSIBLE, MAKING IT EASIER FOR RELUCTANT READERS TO ENGAGE WITH THE MATERIAL.
4. DIARY FORMAT: THE DIARY FORMAT ALLOWS READERS TO SEE GREG’S INNER THOUGHTS AND FEELINGS, CREATING A PERSONAL CONNECTION. IT ALSO MAKES THE TEXT APPROACHABLE, WITH SHORT ENTRIES AND VARIOUS DOODLES.

## CHARACTER ANALYSIS

THE CHARACTERS IN “DIARY OF A WIMPY KID” ARE NOT JUST MERE FIGURES; THEY REPRESENT VARIOUS ARCHETYPES FOUND IN SCHOOL LIFE. EACH CHARACTER PLAYS A CRUCIAL ROLE IN SHAPING GREG’S EXPERIENCES.

### GREG HEFFLEY

GREG IS THE QUINTESSENTIAL “WIMPY KID.” HE OFTEN GRAPPLES WITH ISSUES OF SELF-IMAGE, FRIENDSHIP, AND THE PRESSURE TO CONFORM. HIS CHARACTER DEVELOPMENT THROUGHOUT THE SERIES SHOWCASES A BLEND OF GROWTH AND REGRESSION, TYPICAL OF MANY ADOLESCENTS.

- STRENGTHS:
  - QUICK-WITTED AND HUMOROUS
  - CREATIVE IN HIS APPROACH TO PROBLEMS
  - LOYAL TO HIS FRIENDS, DESPITE HIS FLAWS
- WEAKNESSES:
  - SELF-CENTERED AND MANIPULATIVE AT TIMES
  - STRUGGLES WITH HIS IDENTITY
  - OFTEN FINDS HIMSELF IN TROUBLE DUE TO POOR DECISION-MAKING

### ROWLEY JEFFERSON

ROWLEY SERVES AS GREG'S FOIL; HE IS CHEERFUL, INNOCENT, AND OFTEN OBLIVIOUS TO THE SOCIAL COMPLEXITIES AROUND HIM. THEIR FRIENDSHIP IS A CENTRAL THEME OF THE SERIES, HIGHLIGHTING THE UPS AND DOWNS OF GROWING UP.

- STRENGTHS:
- KIND-HEARTED AND LOYAL
- BRINGS OUT THE BEST IN GREG
- UNAFRAID TO BE HIMSELF
- WEAKNESSES:
- NAÏVE AND EASILY INFLUENCED
- OFTEN FAILS TO RECOGNIZE GREG'S MANIPULATION

## RODRICK HEFFLEY

RODRICK REPRESENTS THE REBELLIOUS TEENAGER, OFTEN CLASHING WITH GREG. HIS CHARACTER ADDS DEPTH TO THE FAMILY DYNAMIC AND ILLUSTRATES THE TYPICAL SIBLING RIVALRY.

- STRENGTHS:
- CONFIDENT AND CHARISMATIC
- MUSICALLY TALENTED, PLAYING IN A BAND
- UNAPOLOGETICALLY HIMSELF
- WEAKNESSES:
- IRRESPONSIBLE AND OFTEN IRRESPONSIBLE
- CAN BE EXCESSIVELY CRUEL TO GREG

## THEMATIC EXPLORATION

THE "DIARY OF A WIMPY KID" SERIES TACKLES SEVERAL THEMES THAT RESONATE WITH YOUNG READERS.

### FRIENDSHIP

FRIENDSHIP IS A CENTRAL THEME THROUGHOUT THE SERIES. GREG AND ROWLEY'S RELATIONSHIP ILLUSTRATES THE COMPLEXITIES OF YOUNG FRIENDSHIPS, INCLUDING LOYALTY, BETRAYAL, AND THE STRUGGLES OF NAVIGATING SOCIAL HIERARCHIES. AS THEY FACE VARIOUS CHALLENGES, THEIR BOND IS TESTED, ULTIMATELY HIGHLIGHTING THE IMPORTANCE OF GENUINE CONNECTIONS.

### IDENTITY AND SELF-DISCOVERY

AS THE SERIES PROGRESSES, GREG EMBARKS ON A JOURNEY OF SELF-DISCOVERY. HE GRAPPLES WITH QUESTIONS ABOUT HIS IDENTITY, POPULARITY, AND WHAT IT MEANS TO BE "COOL." THIS THEME IS PARTICULARLY SIGNIFICANT FOR MIDDLE SCHOOL READERS, WHO ARE OFTEN IN A SIMILAR PHASE OF QUESTIONING THEIR OWN IDENTITIES.

### FAMILY DYNAMICS

THE HEFFLEY FAMILY DYNAMICS PLAY A CRUCIAL ROLE IN GREG'S LIFE. THE INTERACTIONS BETWEEN GREG, RODRICK, AND THEIR PARENTS PROVIDE INSIGHT INTO THE TYPICAL FAMILY STRUGGLES, INCLUDING SIBLING RIVALRY AND PARENTAL EXPECTATIONS. THESE RELATABLE SITUATIONS RESONATE WITH READERS, MAKING THE SERIES MORE IMPACTFUL.

## GROWTH AND CHANGE

THROUGHOUT THE SERIES, GREG EXPERIENCES VARIOUS LIFE LESSONS THAT CONTRIBUTE TO HIS GROWTH. FROM LEARNING THE CONSEQUENCES OF HIS ACTIONS TO UNDERSTANDING THE VALUE OF TRUE FRIENDSHIP, GREG'S JOURNEY REFLECTS THE CHALLENGES OF GROWING UP AND THE IMPORTANCE OF RESILIENCE.

## THE CULTURAL IMPACT OF THE SERIES

THE "DIARY OF A WIMPY KID" SERIES HAS MADE A SIGNIFICANT CULTURAL IMPACT, INFLUENCING HOW CHILDREN ENGAGE WITH READING AND STORYTELLING.

### ENCOURAGING RELUCTANT READERS

ONE OF THE MOST NOTABLE CONTRIBUTIONS OF THE SERIES IS ITS ABILITY TO ENGAGE RELUCTANT READERS. THE COMBINATION OF HUMOR, RELATABLE CHARACTERS, AND ILLUSTRATIONS MAKES READING MORE ACCESSIBLE AND ENJOYABLE FOR CHILDREN WHO MAY STRUGGLE WITH TRADITIONAL TEXTS.

### MERCHANDISING AND MEDIA ADAPTATIONS

THE POPULARITY OF THE SERIES HAS LED TO VARIOUS MERCHANDISE, INCLUDING APPAREL, GAMES, AND ACTIVITY BOOKS. ADDITIONALLY, SEVERAL MOVIES HAVE BEEN ADAPTED FROM THE BOOKS, FURTHER EXPANDING THE FRANCHISE'S REACH AND INFLUENCE.

### COMMUNITY AND FANDOM

THE SERIES HAS FOSTERED A STRONG COMMUNITY OF FANS WHO ENGAGE IN DISCUSSIONS, FAN ART, AND EVEN FAN FICTION. THIS SENSE OF COMMUNITY ALLOWS READERS TO CONNECT WITH ONE ANOTHER OVER SHARED EXPERIENCES AND INTERESTS, FURTHER ENHANCING THE SERIES' APPEAL.

## CONCLUSION

THE "DIARY OF A WIMPY KID" SERIES HAS ESTABLISHED ITSELF AS A CORNERSTONE OF CHILDREN'S LITERATURE, RESONATING WITH READERS THROUGH ITS HUMOR, RELATABLE CHARACTERS, AND ENGAGING STORYTELLING. GREG HEFFLEY'S EXPERIENCES REFLECT THE CHALLENGES AND TRIUMPHS OF ADOLESCENCE, MAKING THE SERIES A VALUABLE RESOURCE FOR YOUNG READERS NAVIGATING SIMILAR PATHS. AS THE SERIES CONTINUES TO EVOLVE, ITS IMPACT ON LITERACY AND POPULAR CULTURE REMAINS PROFOUND, ENSURING THAT THE "WIMPY KID" WILL BE A BELOVED CHARACTER FOR GENERATIONS TO COME. WHETHER THROUGH THE PAGES OF A BOOK OR THE SCREEN OF A MOVIE, THE ADVENTURES OF GREG HEFFLEY WILL UNDOUBTEDLY CONTINUE TO ENTERTAIN AND INSPIRE.

## FREQUENTLY ASKED QUESTIONS

### WHAT THEMES ARE EXPLORED IN 'DIARY OF A WIMPY KID'?

THE SERIES EXPLORES THEMES OF FRIENDSHIP, FAMILY DYNAMICS, ADOLESCENCE, AND THE CHALLENGES OF GROWING UP.



Mini DiaryDiaryday one4  
...

joplin -  
joplin2  
...

-  
114“” (diary day)214 (st valentine's day) 314“” ...

win10iphone -  
MaciPhoneiPadWindows  
...

diary -  
If you are now reading this diary, i hope you can hear my heart.  
These days have witnessed my tearful heart. I don't know Awho ...

CE -  
Aug 29, 2023 · 2011 1  
...

diary -  
35:30botonoco diary  
...

Steamunity -  
SteamUnity

Apple App -  
Apple AppDay One App App  
Apple ...

ArticleReviewLetter -  
Jan 21, 2014 · Article Review  
Letter ...

-  
Mini DiaryDiaryday one4  
...

joplin -  
joplin2  
...

-  
114“” (diary day)214 (st valentine's day) 314“” ...

win10iphone -

MaciPhoneiPadWindows  
...

**diary** -

If you are now reading this diary, i hope you can hear my heart.  
These days have witnessed my tearful heart. I don't know Awho ...

**CE** -

Aug 29, 2023 · 2011 1  
...

**diary** -

35:30b otonoco**diary**  
...

**Steam****unity** -

SteamUnity

Dive into the hilarious world of the 'Diary of a Wimpy Kid' boy! Explore adventures

[Back to Home](#)