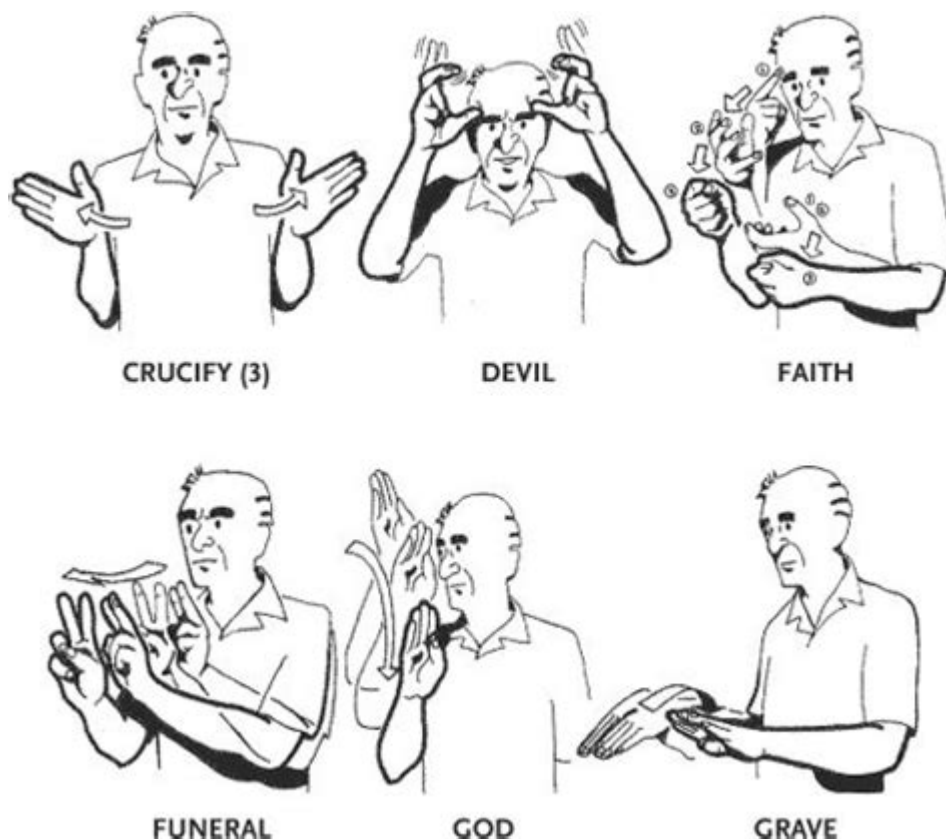


# Death In Sign Language



**Death in sign language** is a topic that holds significant cultural and emotional weight. For many, the ability to communicate about death using sign language is essential, as it allows individuals who are deaf or hard of hearing to engage in important conversations about loss, grief, and memorialization. In this article, we will explore the concept of death in sign language, including its representation in various sign languages, the cultural implications, and the importance of understanding these signs in the context of communication.

## Understanding Sign Language and Its Importance

Sign language is a visual language that uses gestures, facial expressions, and body language to convey meaning. It is the primary mode of communication for many deaf and hard-of-hearing individuals. Each country or region typically has its own sign language, such as American Sign Language (ASL), British Sign Language (BSL), and others.

## The Role of Sign Language in Communicating Sensitive

# Topics

Communicating about sensitive topics like death can be challenging, regardless of the language used. However, for individuals who rely on sign language, the ability to express these emotions and discussions is crucial. Here are some reasons why understanding signs related to death is important:

1. **Cultural Significance:** Different cultures have unique ways of dealing with death and mourning. Sign language can reflect these cultural practices and beliefs.
2. **Emotional Expression:** Death is a profound emotional experience. Having the vocabulary to discuss it in sign language helps individuals express their grief and support one another.
3. **Educational Purposes:** Teaching sign language, especially regarding sensitive topics, can help raise awareness and foster inclusivity within communities.

## Common Signs for Death in Sign Language

While there are various sign languages around the world, many share similarities when it comes to gestures for common concepts like "death." Below are some examples from different sign languages:

### American Sign Language (ASL)

In ASL, the sign for death is often represented by the following:

- **Death:** The dominant hand is in a flat shape and moves across the throat, symbolizing the end of life.

### British Sign Language (BSL)

In BSL, the sign for death can be executed as:

- **Death:** The dominant hand is held in a fist and moves downwards, as if symbolizing a body falling or descending.

## Other Sign Languages

Different countries will have variations in signs for death. Here are a few examples:

- Australian Sign Language (Auslan): The sign for death is similar to BSL but may involve different hand shapes or movements.
- French Sign Language (LSF): The sign for death often involves a gesture that indicates stillness or a resting position.

## **Cultural Interpretations of Death in Sign Language**

Understanding how death is communicated in sign language also requires an appreciation of cultural interpretations. Different cultures may have unique customs surrounding death, and these can influence how signs are created and understood.

### **The Influence of Culture on Signs**

1. Symbolism: Many signs incorporate cultural symbols associated with death.
2. Rituals: Signs may be influenced by rituals surrounding mourning and remembrance.
3. Language Evolution: As cultures evolve, so do the signs, adapting to new societal norms and values.

### **Examples of Cultural Variations**

- Indigenous Sign Languages: Many Indigenous cultures have their own sign languages, which include signs for death that reflect their specific beliefs and practices about life and the afterlife.
- Religious Influences: In cultures with strong religious beliefs, signs might incorporate elements of those beliefs, symbolizing life after death or rituals related to the afterlife.

## **Teaching Death in Sign Language**

Teaching about death in sign language is crucial for fostering understanding and empathy. Here are some strategies to consider:

### **Using Visual Aids**

1. Videos: Utilize instructional videos that demonstrate the signs for death and related concepts.
2. Illustrations: Visual aids can help reinforce the meaning of signs and

their cultural significance.

## Creating a Safe Space for Discussion

1. Open Dialogue: Encourage open discussions about death and grief within educational settings, ensuring that everyone feels comfortable sharing their feelings and experiences.
2. Role-Playing: Engage in role-playing scenarios that involve discussions about death, allowing individuals to practice using signs in context.

## Incorporating Storytelling

Storytelling is an effective way to teach sign language. Incorporate stories that deal with themes of loss and grief, using signs to express emotions and events within the narrative.

## Resources for Learning Sign Language Related to Death

For those looking to deepen their understanding of death in sign language, there are several resources available:

1. Online Courses: Websites like ASL University and SignLanguage101 offer courses that include vocabulary related to sensitive topics.
2. YouTube Channels: Many YouTube channels focus on teaching sign language, providing videos specifically about death and mourning.
3. Community Classes: Local community centers or organizations may offer sign language classes, where you can learn the vocabulary in a supportive environment.

## Conclusion

Understanding **death in sign language** is vital for effective communication, especially for individuals who are deaf or hard of hearing. By recognizing the signs, cultural implications, and teaching strategies, we can foster a more inclusive environment that honors the complexities of life and loss. Whether through personal conversations, community engagement, or educational initiatives, promoting the use of sign language to discuss death helps to bridge gaps in communication and supports individuals during difficult times.

# Frequently Asked Questions

## What is the sign for 'death' in American Sign Language (ASL)?

In ASL, the sign for 'death' is made by placing one hand in front of the face with the palm facing down, and then moving it away and downwards.

## How can I express condolences in sign language?

To express condolences in ASL, you can sign 'sorry' by placing a fist on your chest and moving it in a circular motion, followed by the sign for 'death'.

## Are there different signs for 'death' in various sign languages?

Yes, different sign languages have their own unique signs for 'death', such as 'mort' in French Sign Language (LSF) and 'muerto' in Spanish Sign Language (LSE).

## What are some common phrases related to death in sign language?

Common phrases include 'rest in peace' and 'passed away', each with its own specific signs in ASL.

## How do you sign 'funeral' in ASL?

The sign for 'funeral' in ASL involves placing one hand flat and moving it across the other hand, which is also flat, as if symbolizing a casket.

## Is there a sign for 'grief' or 'mourning' in sign language?

Yes, the sign for 'grief' in ASL involves placing both hands on your chest and moving them downwards, expressing a heavy feeling.

## Can children learn about death in sign language?

Absolutely! Teaching children about death using sign language can be sensitive and supportive, helping them communicate their feelings.

## How do you explain the concept of death to someone using sign language?

When explaining death in sign language, use simple signs for 'life', 'gone', and 'no more' while providing comforting context.

## What resources are available for learning about death in sign language?

Resources include ASL dictionaries, online courses, and community classes focused on sign language related to sensitive topics like death.

## What cultural considerations should be taken into account when discussing death in sign language?

Cultural beliefs about death vary widely, so it's essential to be respectful and aware of different customs and practices when discussing it in sign language.

Find other PDF article:

<https://soc.up.edu.ph/51-grid/files?trackid=dvg75-1799&title=romans-1-study-guide.pdf>

## Death In Sign Language

Twitch.tv - Official Site

Twitch is the world`s leading video platform and community for gamers.

### **Twitch Status**

Twitch is always live—except for when it's not. See which areas of Twitch are thriving or having a bit of a rough day below. ...

*Twitch (service) - Wikipedia*

Twitch is an American video live-streaming service popular in video games, including broadcasts of esports ...

### **Twitch: Live Streaming - Apps on Google Play**

May 9, 2024 · Download Twitch and join millions enjoying live games, music, sports, esports, podcasts, cooking ...

### **Twitch: Live Streaming on the App Store**

Start your own channel: The Twitch app is one of the easiest ways to start streaming. Just create an account, go live directly ...

Isla de Taiwán - Wikipedia, la enciclopedia libre

La isla de Taiwán (en chino tradicional, 臺灣/台灣; en chino simplificado, 台湾; pinyin, Táiwān), también conocida como ...

Taiwan - Wikipedia

Taiwan, [II][i] officially the Republic of China (ROC), [I] is a country [27] in East Asia. [I] The main island of Taiwan, also ...

## **Así es Taiwán: ubicación, gobierno, idiomas hablados y ...**

Aug 2, 2022 · Esta es una mirada rápida sobre Taiwán, incluyendo su ubicación, el gobierno autónomo que rige en la isla ...

*Taiwán: cómo es, su historia y sus características*

Descubre Taiwán: un universo de cultura, historia y belleza natural. Explora su economía, política y destinos turísticos ...

## **Taiwan: Información Completa sobre Cultura, Economía y Rela...**

Taiwán, oficialmente conocida como la República de China, es una isla situada en el este de Asia. Limita al norte con el ...

Discover the meaning of 'death in sign language' and learn essential signs for sensitive conversations. Enhance your communication skills today! Learn more.

[Back to Home](#)