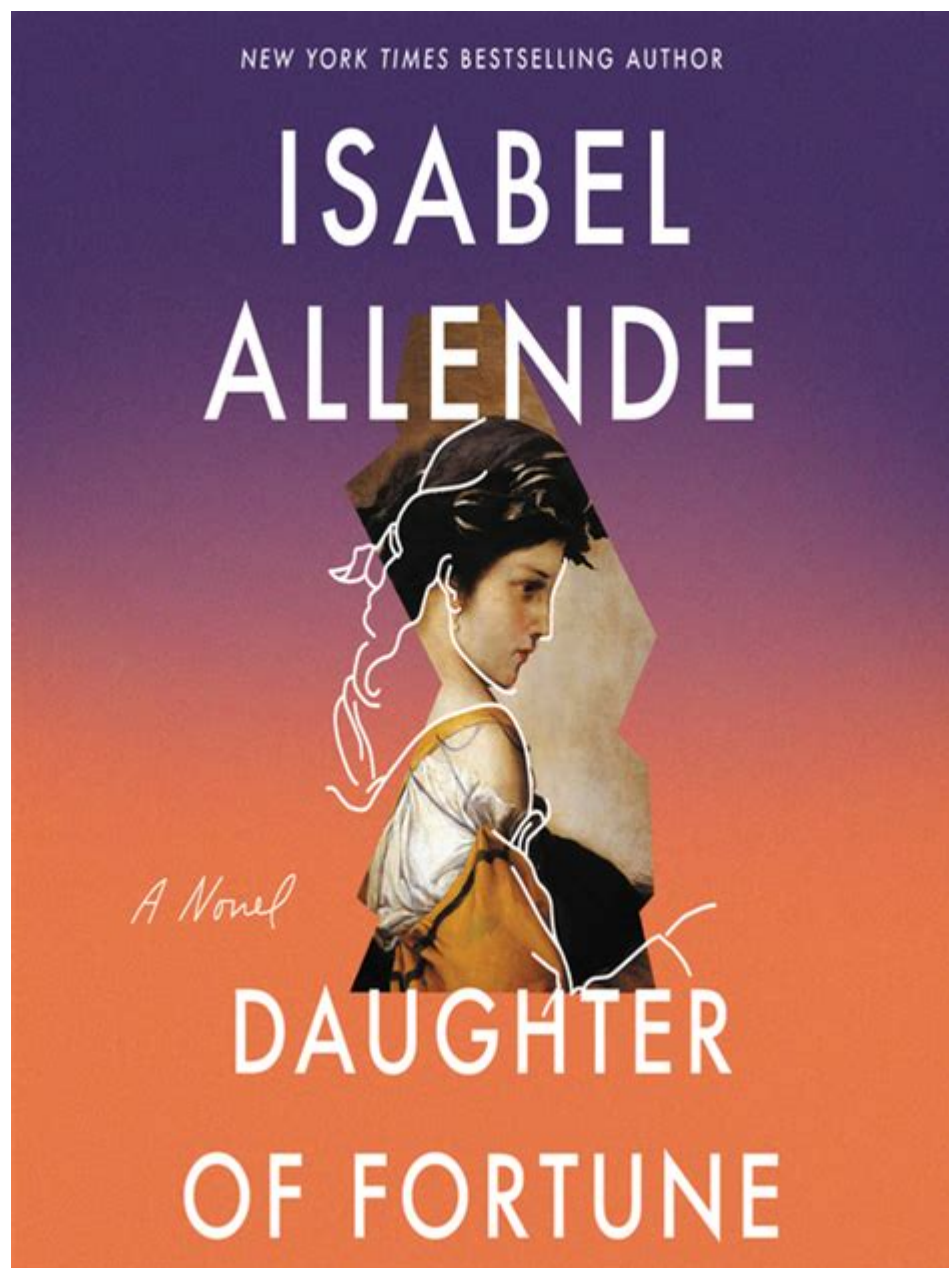


Daughter Of Fortune By Isabel Allende



DAUGHTER OF FORTUNE BY ISABEL ALLENDE IS A CAPTIVATING NOVEL THAT INTRICATELY WEAVES THE LIVES OF ITS CHARACTERS AGAINST THE BACKDROP OF THE CALIFORNIA GOLD RUSH. PUBLISHED IN 1999, THIS HISTORICAL FICTION PIECE EXPLORES THEMES OF LOVE, IDENTITY, AND THE PURSUIT OF DREAMS, ALL WHILE HIGHLIGHTING THE STRUGGLES AND TRIUMPHS OF ITS PROTAGONIST, ELIZA SOMMERS. THE NARRATIVE COMBINES ELEMENTS OF ROMANCE, ADVENTURE, AND SOCIAL COMMENTARY, MAKING IT A RICH READING EXPERIENCE THAT RESONATES WITH MANY.

OVERVIEW OF THE NOVEL

DAUGHTER OF FORTUNE FOLLOWS THE LIFE OF ELIZA SOMMERS, AN ORPHAN RAISED IN THE AFFLUENT HOUSEHOLD OF A BRITISH MERCHANT IN VALPARAISO, CHILE. HER STORY IS SET IN THE TUMULTUOUS PERIOD OF THE 19TH CENTURY, PARTICULARLY DURING THE CALIFORNIA GOLD RUSH, WHICH SERVES AS THE CATALYST FOR HER JOURNEY TO SELF-DISCOVERY.

SETTING AND HISTORICAL CONTEXT

THE NOVEL IS PRIMARILY SET IN:

1. VALPARAÍSO, CHILE - A BUSTLING PORT CITY WHERE ELIZA GROWS UP. THE AUTHOR PAINTS A VIVID PICTURE OF THE CITY'S CULTURE AND SOCIETY, ILLUSTRATING THE EUROPEAN INFLUENCE ON SOUTH AMERICAN LIFE.
2. CALIFORNIA - THE GOLD RUSH ERA BRINGS ELIZA TO CALIFORNIA, WHERE SHE SEEKS HER LOST LOVE, A YOUNG CHINESE MAN NAMED TAO CHI'EN. THE HARSH REALITIES OF LIFE DURING THIS PERIOD ARE VIVIDLY DEPICTED, SHOWCASING BOTH THE OPPORTUNITIES AND THE CHALLENGES FACED BY THOSE WHO PURSUED FORTUNE.

MAIN CHARACTERS

THE RICHNESS OF DAUGHTER OF FORTUNE LIES IN ITS DIVERSE AND COMPLEX CHARACTERS:

- ELIZA SOMMERS: THE PROTAGONIST, A STRONG-WILLED AND DETERMINED YOUNG WOMAN, WHO DEFIES SOCIETAL NORMS TO PURSUE HER LOVE AND DREAMS.
- TAO CHI'EN: A CHINESE IMMIGRANT AND ELIZA'S LOVE INTEREST, WHOSE JOURNEY REFLECTS THE STRUGGLES OF IMMIGRANT COMMUNITIES DURING THE GOLD RUSH.
- JEREMY SOMMERS: ELIZA'S ADOPTIVE BROTHER, WHOSE LIFE TAKES A DIFFERENT PATH, HIGHLIGHTING THEMES OF FAMILIAL LOYALTY AND EXPECTATIONS.
- MAMA FRESIA: ELIZA'S CARETAKER, REPRESENTING THE TRADITIONAL WISDOM AND STRENGTH OF WOMEN IN THE FACE OF ADVERSITY.
- THE ENGLISHMAN: A CHARACTER WHO EMBODIES THE COLONIAL MINDSET AND THE COMPLEXITIES OF CLASS AND RACE DURING THE TIME.

THEMATIC EXPLORATION

DAUGHTER OF FORTUNE DELVES INTO SEVERAL PROFOUND THEMES THAT ENRICH THE NARRATIVE:

IDENTITY AND SELF-DISCOVERY

ELIZA'S JOURNEY IS ONE OF SELF-DISCOVERY. THROUGHOUT THE NOVEL, SHE GRAPPLES WITH HER IDENTITY AS A WOMAN IN A PATRIARCHAL SOCIETY. HER TRANSITION FROM A SHELTERED GIRL TO AN INDEPENDENT WOMAN REFLECTS THE BROADER QUEST FOR PERSONAL AND CULTURAL IDENTITY.

- CULTURAL IDENTITY: ELIZA'S INTERACTIONS WITH DIFFERENT CULTURES, PARTICULARLY HER RELATIONSHIP WITH TAO CHI'EN, CHALLENGE HER UNDERSTANDING OF HER OWN IDENTITY.
- GENDER ROLES: THE NOVEL CRITIQUES THE LIMITED ROLES AVAILABLE TO WOMEN IN THE 19TH CENTURY, AS ELIZA DEFIES EXPECTATIONS BY EMBARKING ON HER JOURNEY.

LOVE AND RELATIONSHIPS

AT THE HEART OF THE NOVEL IS ELIZA'S PASSIONATE LOVE FOR TAO CHI'EN. THEIR RELATIONSHIP TRANSCENDS CULTURAL AND SOCIETAL BOUNDARIES, SYMBOLIZING THE POWER OF LOVE IN OVERCOMING OBSTACLES.

- ROMANTIC LOVE: ELIZA'S DETERMINATION TO FIND TAO CHI'EN SHOWCASES THE LENGTHS ONE WILL GO FOR LOVE.
- FAMILIAL LOVE: THE DYNAMICS BETWEEN ELIZA AND HER ADOPTIVE FAMILY HIGHLIGHT THE COMPLEXITIES OF LOVE WITHIN FAMILIAL RELATIONSHIPS.

SOCIAL CLASS AND INEQUALITY

THE NOVEL ALSO ADDRESSES THEMES OF SOCIAL CLASS, PARTICULARLY THROUGH THE LENS OF THE GOLD RUSH.

- ECONOMIC DISPARITIES: THE PURSUIT OF WEALTH DURING THE GOLD RUSH LEADS TO EXPLOITATION AND INEQUALITY, PARTICULARLY FOR MARGINALIZED GROUPS, SUCH AS THE CHINESE IMMIGRANTS.
- COLONIALISM: THE INTERACTIONS BETWEEN DIFFERENT CULTURES REVEAL THE IMPACTS OF COLONIALISM AND THE SOCIAL HIERARCHIES THAT PERSIST.

NARRATIVE STYLE AND STRUCTURE

ISABEL ALLENDE'S WRITING IS CHARACTERIZED BY ITS LYRICAL PROSE AND VIVID IMAGERY.

STORYTELLING TECHNIQUES

1. MAGICAL REALISM: ALLENDE INCORPORATES ELEMENTS OF MAGICAL REALISM, BLENDING THE ORDINARY WITH THE EXTRAORDINARY, WHICH ADDS DEPTH TO THE NARRATIVE.
2. NON-LINEAR TIMELINE: THE STORY UNFOLDS THROUGH VARIOUS PERSPECTIVES, ALLOWING READERS TO SEE THE MULTIFACETED NATURE OF THE CHARACTERS' EXPERIENCES.
3. RICH DESCRIPTIONS: THE AUTHOR'S DETAILED DESCRIPTIONS OF SETTINGS AND CHARACTERS IMMERSE READERS IN THE WORLD OF THE 19TH CENTURY, CREATING A TANGIBLE SENSE OF PLACE.

SYMBOLISM

ALLENDE EMPLOYS VARIOUS SYMBOLS THROUGHOUT DAUGHTER OF FORTUNE:

- THE SEA: REPRESENTS BOTH OPPORTUNITY AND DANGER, MIRRORING ELIZA'S JOURNEY.
- GOLD: A SYMBOL OF WEALTH AND ASPIRATION, IT ALSO HIGHLIGHTS THE MORAL AMBIGUITIES OF THE CHARACTERS' PURSUITS.
- LETTERS: COMMUNICATION IS A RECURRING MOTIF, REPRESENTING CONNECTION AND THE LONGING FOR LOVE.

CRITICAL RECEPTION AND IMPACT

DAUGHTER OF FORTUNE HAS BEEN WELL-RECEIVED BY CRITICS AND READERS ALIKE, PRAISED FOR ITS RICH STORYTELLING AND DEEP THEMATIC EXPLORATION.

LITERARY SIGNIFICANCE

- ALLENDE'S WORK IS CELEBRATED FOR ITS CONTRIBUTION TO FEMINIST LITERATURE, CHALLENGING TRADITIONAL NARRATIVES ABOUT WOMEN AND THEIR ROLES IN SOCIETY.
- THE NOVEL HAS SPARKED DISCUSSIONS ABOUT RACE, CLASS, AND GENDER, MAKING IT A RELEVANT AND THOUGHT-PROVOKING READ.

ADAPTATIONS AND INFLUENCE

- THE BOOK HAS INSPIRED ADAPTATIONS IN VARIOUS FORMS, INCLUDING STAGE PRODUCTIONS, WHICH HAVE SOUGHT TO BRING ELIZA'S STORY TO LIFE FOR NEW AUDIENCES.
- ALLENDE'S NARRATIVE STYLE HAS INFLUENCED A GENERATION OF WRITERS, PARTICULARLY IN THE REALM OF HISTORICAL FICTION.

CONCLUSION

DAUGHTER OF FORTUNE IS MORE THAN JUST A HISTORICAL NOVEL; IT IS A PROFOUND EXPLORATION OF LOVE, IDENTITY, AND THE HUMAN SPIRIT. ISABEL ALLENDE MASTERFULLY CRAFTS A NARRATIVE THAT RESONATES WITH READERS ACROSS GENERATIONS, INVITING THEM TO REFLECT ON THEIR OWN JOURNEYS AND THE SOCIETAL STRUCTURES THAT SHAPE THEIR EXPERIENCES. THROUGH ELIZA SOMMERS, READERS ARE ENCOURAGED TO PURSUE THEIR DREAMS, CHALLENGE SOCIETAL NORMS, AND EMBRACE THE COMPLEXITIES OF LOVE AND IDENTITY. AS A WORK OF LITERATURE, IT STANDS AS A TESTAMENT TO THE RESILIENCE OF THE HUMAN SPIRIT IN THE FACE OF ADVERSITY, MAKING IT AN ESSENTIAL READ FOR THOSE WHO APPRECIATE A RICH AND IMMERSIVE STORYTELLING EXPERIENCE.

FREQUENTLY ASKED QUESTIONS

WHAT ARE THE MAIN THEMES EXPLORED IN 'DAUGHTER OF FORTUNE' BY ISABEL ALLENDE?

THE MAIN THEMES IN 'DAUGHTER OF FORTUNE' INCLUDE LOVE AND DESIRE, THE QUEST FOR IDENTITY, THE IMPACT OF SOCIETAL EXPECTATIONS, AND THE CLASH OF CULTURES DURING THE CALIFORNIA GOLD RUSH.

WHO IS THE PROTAGONIST OF 'DAUGHTER OF FORTUNE' AND WHAT IS HER JOURNEY?

THE PROTAGONIST IS ELIZA SOMMERS, A YOUNG CHILEAN WOMAN WHO EMBARKS ON A JOURNEY TO SAN FRANCISCO IN SEARCH OF HER LOVER, NAVIGATING CHALLENGES THAT TEST HER RESILIENCE AND SELF-DISCOVERY.

HOW DOES ISABEL ALLENDE INCORPORATE HISTORICAL ELEMENTS INTO 'DAUGHTER OF FORTUNE'?

ALLENDE WEAVES HISTORICAL ELEMENTS BY SETTING THE STORY DURING THE CALIFORNIA GOLD RUSH AND INCORPORATING REAL EVENTS AND FIGURES, WHICH ENRICH THE NARRATIVE AND PROVIDE CONTEXT FOR THE CHARACTERS' EXPERIENCES.

WHAT ROLE DO GENDER AND SOCIAL CLASS PLAY IN 'DAUGHTER OF FORTUNE'?

GENDER AND SOCIAL CLASS PLAY SIGNIFICANT ROLES IN THE NOVEL, AS ELIZA CHALLENGES THE TRADITIONAL ROLES EXPECTED OF WOMEN IN HER SOCIETY AND CONFRONTS CLASS DISPARITIES AS SHE PURSUES HER DREAMS.

Relationships and Family

FatherMotherUncleAuntBrotherSisterSonDaughterCousinsNephew and Niece 53 Relationships ...

daughter **gh**, **gh**...

Oct 22, 2020 · 1 Relationship [1] e daughter ...

xx -

NGA Relationship ...

? -

Apr 5, 2022 · SO MUCH LOVE TO GIVE ...

daughter card *son ...* -

Aug 7, 2023 · daughter card son card child card 3

daughter cell **son cell** -

Jan 31, 2017 · daughter cell son cell 8

Explore the rich narrative of "Daughter of Fortune" by Isabel Allende. Discover how this captivating tale of love and adventure unfolds. Learn more today!

[Back to Home](#)