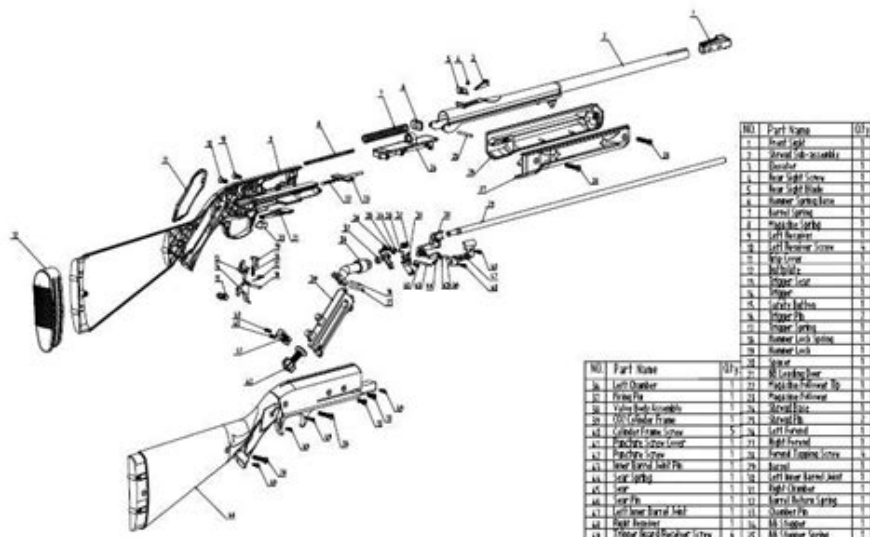


Daisy Model 25 Parts Diagram

Model 74 Replacement Parts List

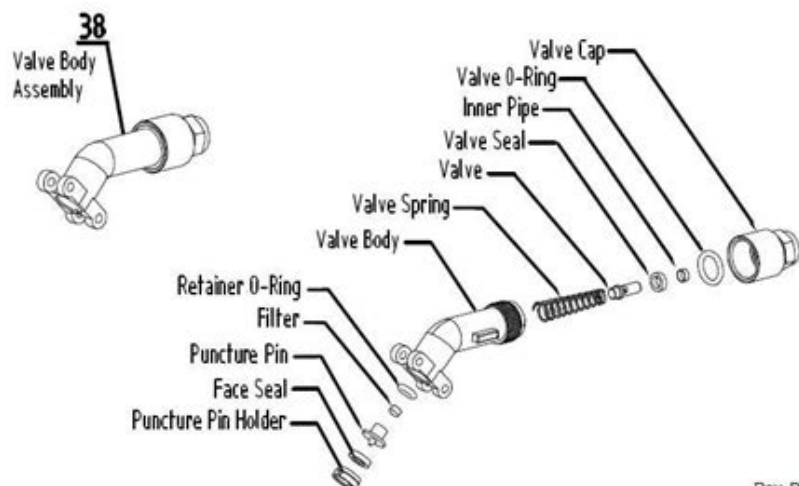


Rev B 7/16



Model 74 Replacement Parts List

Valve Body Assembly Detail



Rev. B 7/16

[illegible]

Model 74

| Qty# | Part Number | Description | Price |
|------|-------------|-----------------------|----------|
| 1 | 74-1-1 | Front Sight | \$ 3.00 |
| 8 | 74-1-8 | Magazine Spring | \$ 0.50 |
| 11 | 74-1-11 | Left Grip Cover | \$ 2.00 |
| 21 | 74-1-21 | B&B Loading Door | \$ 1.00 |
| 22 | 74-1-22 | Magazine Follower Tip | \$ 0.50 |
| 23 | 74-1-23 | Magazine Follower | \$ 1.00 |
| 36 | 74-1-36 | Valve Body Assembly | \$ 15.00 |

Send orders to:
Customer Service Department
Daisy Outdoor Products
PO Box 220
Roger, AR 72757
1-800-713-2479

Understanding the Daisy Model 25 Parts Diagram

The **Daisy Model 25 Parts Diagram** is an essential resource for anyone interested in understanding the inner workings of this classic air rifle. Produced by Daisy Outdoor Products, the Model 25 has been a staple in the world of BB guns since its introduction in the 1960s. This article aims to provide a comprehensive overview of the Model 25, its key components, and how the parts diagram can aid in maintenance and repair.

Overview of the Daisy Model 25

The Daisy Model 25 is a pump-action BB gun that has gained popularity for its simplicity, reliability, and ease of use. It is designed primarily for target shooting and recreational use. The gun is known for its accuracy and its ability to shoot a variety of BBs.

Key Features of the Daisy Model 25

1. **Pump-Action Mechanism:** The Model 25 features a pump-action mechanism that allows the user to load and shoot BBs with ease.
2. **Spring-Powered:** The rifle operates using a spring-powered system, which provides consistent power with each shot.
3. **Lightweight and Durable:** Made from high-quality materials, the Model 25 is both lightweight and durable, making it suitable for shooters of all ages.
4. **Adjustable Sights:** The gun comes with adjustable rear sights, allowing for improved accuracy.

The Importance of the Parts Diagram

The parts diagram of the Daisy Model 25 is an invaluable tool for both hobbyists and professional gunsmiths. It provides a visual representation of all the components within the air rifle, making it easier to understand how each part interacts with the others.

Benefits of Using the Parts Diagram

- **Simplifies Repairs:** By having a clear visual guide, users can more easily identify which parts may need repairs or replacement.
- **Facilitates Maintenance:** Regular maintenance is crucial for the longevity of any firearm. The parts diagram helps users locate specific components that require lubrication or cleaning.
- **Enhances Understanding:** For those new to firearms, the parts diagram serves as an educational resource, helping them learn about the different parts and their functions.

Parts of the Daisy Model 25

Understanding the individual parts of the Daisy Model 25 is essential for effective maintenance and repair. Below is a breakdown of the primary components, along with a brief description of each.

1. Stock

The stock is the part of the gun that the shooter holds. It is typically made of wood or synthetic materials.

2. Receiver

The receiver houses the trigger assembly and is where the firing mechanism is located. It is a crucial component that houses many internal parts.

3. Barrel

The barrel is where the BB travels through when fired. It is designed for accuracy and often has rifling to improve projectile stability.

4. Pump Arm

The pump arm is used to compress the spring that powers the shot. It is a vital part of the pump-action mechanism.

5. Trigger Assembly

The trigger assembly includes the trigger and the sear, which are responsible for releasing the compressed spring to fire the BB.

6. Piston

The piston compresses the air in the cylinder, providing the force needed to propel the BB out of the barrel.

7. Sights

The sights include front and rear components that help the shooter aim accurately at the target.

8. Safety Mechanism

The safety mechanism prevents the gun from firing accidentally and is an important safety feature.

9. Magazine

The Model 25 uses a magazine to hold the BBs before they are chambered for firing.

How to Read the Parts Diagram

A typical parts diagram for the Daisy Model 25 is usually labeled and may include exploded views of the rifle. Here's how to effectively read and use it:

1. **Locate the Legend:** Most diagrams will have a legend that explains what each part is. This is crucial for understanding the labels.
2. **Identify Key Components:** Focus on the parts you are interested in—whether for repair, replacement, or maintenance.
3. **Follow the Assembly Order:** If you are reassembling the gun, the diagram will help you understand the proper order in which to put the parts back together.
4. **Refer to the Manual:** For further details, refer to the owner's manual that accompanies the parts diagram, as it often contains specific instructions for the Model 25.

Common Issues and Solutions

While the Daisy Model 25 is known for its reliability, users may encounter some common issues. Here's a list of these issues along with possible solutions:

- **Difficulty in Pumping:** This may indicate a lack of lubrication in the pump mechanism. Regularly applying a silicone-based lubricant can help.
- **Inconsistent Firing:** Check the piston and spring for wear. If they appear damaged, consider replacing them.
- **BBs Jammed in the Barrel:** If BBs are consistently jamming, inspect the barrel for obstructions and ensure that the magazine is functioning properly.
- **Weak Shots:** If the shots are weak, it may be due to a worn-out spring. Replacing the spring can restore performance.

Conclusion

The **Daisy Model 25 Parts Diagram** serves as an essential guide for anyone looking to maintain or repair this iconic air rifle. Understanding the various components and how they work together enhances not only the user's experience but also the gun's performance. By utilizing the parts diagram effectively, shooters can ensure their Model 25 remains in excellent condition for years to come. Whether you're a hobbyist, a collector, or a new owner, familiarizing yourself with the Model 25 and its parts will undoubtedly enrich your shooting experience.

Frequently Asked Questions

What is the Daisy Model 25 and its primary use?

The Daisy Model 25 is a popular lever-action air rifle, primarily used for recreational shooting and training, especially for beginners.

Where can I find a detailed parts diagram for the Daisy Model 25?

A detailed parts diagram for the Daisy Model 25 can typically be found in the owner's manual, on the official Daisy website, or through various online forums dedicated to air gun enthusiasts.

How can I identify parts in the Daisy Model 25 parts diagram?

Parts in the Daisy Model 25 parts diagram are usually labeled with part numbers and descriptions, making it easier to identify each component for maintenance or replacement.

What are common issues that might require referring to the Daisy Model 25 parts diagram?

Common issues include misfiring, loss of power, or mechanical failures, which may necessitate inspecting or replacing specific parts as indicated in the parts diagram.

Are there aftermarket parts available for the Daisy Model 25?

Yes, there are aftermarket parts available for the Daisy Model 25, but it's essential to ensure they are compatible and of good quality to maintain the rifle's performance.

How do I perform maintenance on the Daisy Model 25 using the parts diagram?

To perform maintenance, consult the parts diagram to identify components like the piston,

seals, and springs, and follow the manufacturer's instructions for cleaning and replacing parts as needed.

Find other PDF article:

<https://soc.up.edu.ph/48-shade/files?dataid=bwH07-2014&title=printable-phonics-worksheets-for-kindergarten.pdf>

Daisy Model 25 Parts Diagram

□□□*Daisy*□□□? (□□□□□) - □□□□

Daisy

 ...

Daisy □□□□□□_□□□□□

Daisy.....!.....
.....

daisy□□□□□□ - □□□□

Mar 28, 2024 · daisy Daisy [?de?zi] Daisy “ ”
 () () ...

Daisy

Jul 11, 2024 · Daisy 1. Daisy "Daisy" " " 2. "daisy" ...

Daisy Chain Topology

Jul 24, 2024 · [Daisy Chain Topology](#)[Mesh](#)[WLAN](#) ...

Daisy, Daisy - □□

Daisy Greville, 1899 1892 Harry Dacre 1891 Harry ...

Daisy Dukes□□□□ □□□□

Aug 28, 2024 · Daisy DukesDaisy Dukes
Katy PerryStarstruck ...

Daisy -

2 days ago · Daisy

daisy lane

Aug 23, 2008 · daisy lane 000000 Artist: Stereophonics Album: Pull the Pin Title: Daisy Lane 00000000
00000000 Outside it's summer, indoors it's cool 0000000000

□□□□□□□□*daisy daisy give you answer do* □□□□□□ ...

daisy daisy give you answer do los amigos irony? Daisy, daisy Give me your answer true. I'm half crazy All for the love of you. It won't be a stylish m

Daisy? () -
Daisy ...

Daisy _
Daisy ...

daisy -
Mar 28, 2024 · daisy daisy [?de?zi] Daisy “ ”
 () () ...

Daisy _
Jul 11, 2024 · Daisy 1. Daisy "Daisy" “ ” 2.
 ...

Daisy Chain Topology
Jul 24, 2024 · Daisy Chain Topology Mesh
 WLAN ...

Daisy, Daisy -
Daisy Greville, 1899 1892 Harry Dacre
 1891 ...

Daisy Dukes _
Aug 28, 2024 · Daisy Dukes Daisy Dukes
 Katy Perry ...

Daisy -
2 days ago · Daisy

daisy lane _
Aug 23, 2008 · daisy lane Artist: Stereophonics Album: Pull the Pin Title: Daisy Lane
 Outside it's summer, indoors it's cool ...

daisy daisy give you answer do ...
daisy daisy give you answer do los amigos irony? Daisy, daisy Give me your answer true. I'm half crazy All for the love of you. It won't be a ...

Unlock the secrets of the Daisy Model 25 with our detailed parts diagram. Discover how to identify and maintain each component. Learn more now!

[Back to Home](#)