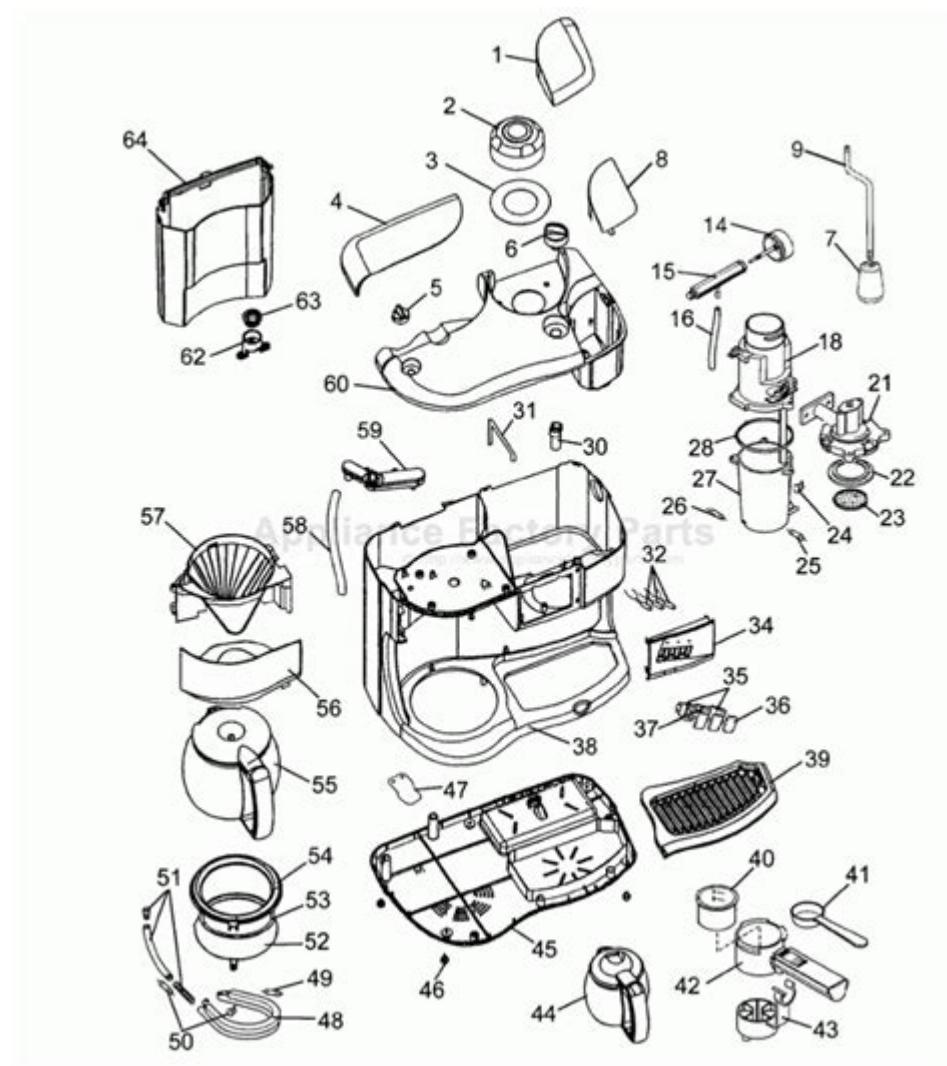


Cuisinart Coffee Maker Parts Diagram



Cuisinart coffee maker parts diagram is an essential tool for both coffee enthusiasts and casual users alike. Understanding the various components of a Cuisinart coffee maker can significantly enhance your brewing experience, allowing you to troubleshoot issues, replace parts, or simply appreciate the engineering behind your favorite kitchen appliance. In this article, we will break down the essential components of a Cuisinart coffee maker, provide insights into their functions, and help you navigate the parts diagram for better maintenance and usage.

Overview of Cuisinart Coffee Makers

Cuisinart is renowned for its high-quality kitchen appliances, and their coffee makers are no exception. From single-serve models to traditional drip coffee makers, Cuisinart offers a variety of machines designed to cater to different preferences. Understanding the parts of these coffee makers is crucial for effective use and maintenance.

Key Components of a Cuisinart Coffee Maker

Below is a detailed breakdown of the primary components found in most Cuisinart coffee makers.

1. Water Reservoir

The water reservoir is a crucial part of any coffee maker, as it holds the water needed for brewing.

- Function: It allows users to fill the machine with the required water for brewing coffee.
- Maintenance Tip: Regularly clean the water reservoir to prevent mineral buildup, which can affect the taste of your coffee.

2. Brew Basket

The brew basket is where you place your coffee grounds.

- Function: It holds the coffee filter and the coffee grounds during the brewing process.
- Types: Cuisinart coffee makers typically use either a flat-bottom or cone-shaped brew basket.
- Maintenance Tip: Clean the brew basket after each use to avoid stale coffee residue.

3. Carafe

The carafe is the container that holds the brewed coffee.

- Types:
 - Glass Carafe: Often used in traditional models; requires careful handling.
 - Thermal Carafe: Insulated to keep coffee hot for longer periods without a warming plate.
- Maintenance Tip: Ensure the carafe is washed thoroughly to prevent coffee oils from accumulating.

4. Heating Element

The heating element is responsible for heating the water during the brewing process.

- Function: It heats the water to the optimal temperature for extracting flavors from the coffee grounds.
- Common Issues: If the coffee isn't hot enough, the heating element may need inspection or replacement.

5. Control Panel

The control panel is the user interface of the coffee maker.

- Functions:
- On/Off Switch: Allows you to power the machine.
- Brew Strength Selector: Lets you choose the strength of your coffee.
- Programmable Settings: Enables you to set a timer for automatic brewing.
- Maintenance Tip: Clean the control panel with a damp cloth to ensure buttons remain functional.

6. Drip Tray

The drip tray collects any spills or overflow from the carafe during brewing.

- Function: Prevents messes on your countertop.
- Maintenance Tip: Regularly empty and clean the drip tray to avoid mold growth.

7. Brew Head

The brew head is where hot water is dispensed over the coffee grounds.

- Function: It ensures even saturation of the coffee grounds for optimal extraction.
- Maintenance Tip: Occasionally check for clogs and clean the brew head to maintain proper functioning.

Understanding the Parts Diagram

A Cuisinart coffee maker parts diagram offers a visual representation of the components discussed above. Familiarizing yourself with the diagram can greatly simplify troubleshooting and repairs. Here's how to read and understand the diagram:

1. Identifying Components

- Each part is labeled clearly, making it easy for users to locate specific components.
- Look for numbers or letters next to parts to reference them in the user manual.

2. Referencing the User Manual

- The user manual often includes a parts diagram that corresponds with detailed descriptions of each component.
- Refer to this manual for specific part numbers when ordering replacements.

3. Troubleshooting Common Issues

The parts diagram can be invaluable when addressing common issues such as:

- Weak or Cold Coffee: Check the heating element and brew head for clogs.
- Leaks: Inspect the water reservoir and carafe for cracks or loose connections.
- Control Panel Problems: Ensure all buttons are functioning and not obstructed by dirt.

Maintenance and Care for Your Cuisinart Coffee Maker

Proper maintenance of your Cuisinart coffee maker can prolong its lifespan and ensure optimal performance. Here are some tips to keep your machine in top shape:

1. Regular Cleaning

- Daily Cleaning: Rinse the brew basket and carafe after each use.
- Deep Cleaning: Every month, run a mixture of equal parts water and white vinegar through the machine to descale it.

2. Replacing Parts When Necessary

- Pay attention to signs that components may need replacement, such as leaks or inconsistent brewing temperatures.
- Use the parts diagram to identify and order the correct replacement parts.

3. Proper Storage

- If you won't be using the coffee maker for an extended period, empty the water reservoir and clean all components.
- Store it in a dry place to prevent mold and mildew from developing.

Conclusion

In conclusion, understanding the Cuisinart coffee maker parts diagram is vital for any coffee aficionado or casual user looking to enhance their brewing experience. By familiarizing yourself with the various components, their functions, and maintenance tips, you can ensure that your coffee maker operates smoothly and produces delicious coffee every time. Whether you're troubleshooting an issue or simply seeking to maintain your machine, this knowledge empowers you to make the most of your Cuisinart coffee maker. Regular care and attention to the parts will not only enhance your coffee experience but also extend the lifespan of your beloved appliance.

Frequently Asked Questions

What is a Cuisinart coffee maker parts diagram?

A Cuisinart coffee maker parts diagram is a visual representation that illustrates the various components and parts of a Cuisinart coffee maker, helping users identify and understand the function of each part.

Where can I find a Cuisinart coffee maker parts diagram?

You can find a Cuisinart coffee maker parts diagram on the official Cuisinart website, in the user manual that comes with the coffee maker, or through household appliance repair websites.

How can a parts diagram help in troubleshooting my Cuisinart coffee maker?

A parts diagram can help you identify specific parts that may be malfunctioning, allowing you to troubleshoot issues more effectively by pinpointing where repairs or replacements are needed.

What common parts are included in a Cuisinart coffee maker parts diagram?

Common parts typically included in a Cuisinart coffee maker parts diagram are the water reservoir, brew basket, filter holder, carafe, heating element, and control panel.

Can I order replacement parts using the Cuisinart coffee maker parts diagram?

Yes, you can use the Cuisinart coffee maker parts diagram to identify the specific parts you need, which can then be ordered through the Cuisinart website or authorized retailers.

Are Cuisinart coffee maker parts diagrams the same for all models?

No, Cuisinart coffee maker parts diagrams vary by model, so it's important to refer to the diagram specific to your coffee maker model for accurate information.

How do I read a Cuisinart coffee maker parts diagram?

To read a Cuisinart coffee maker parts diagram, look for labeled parts that correspond to the coffee maker's layout, and use the legend or key provided to understand symbols or numbers associated with each part.

Find other PDF article:

<https://soc.up.edu.ph/43-block/files?docid=sAa50-8536&title=nelson-nkjv-study-bible.pdf>

[Cuisinart Coffee Maker Parts Diagram](#)

Cuisinart's Kitchen Appliances for Professional and Home Chefs

Discover a full-service culinary company Cuisinart. Shop our prestigious kitchen appliances, cookware, and more.

9-Cup Continuous Feed Food Processor - Cuisinart

Meal preparation is faster and easier with the 9-Cup Food Processor by Cuisinart ®. The premium universal blade for chopping, mixing dough and reversible slicing and shredding discs offer full ...

Appliances | Cuisinart

La chambre forte est ouverte - édition de juillet. Obtenez jusqu'à 45 % de rabais jusqu'au 31 juillet. Magasiner maintenant

Custom 14™ 14-Cup Food Processor - cuisinart.ca

Cuisinart makes cooking for crowds easy and fast with the Custom 14™ 14 Cup Food Processor. Made from brushed stainless steel, this sleek kitchen workhorse is a breeze to use and will ...

Appliances | Cuisinart

Showing 12 of 142 productsShowing

Small Kitchen Appliances - cuisinart.ca

Small Kitchen Appliances From our iconic food processors to coffeemakers and stand mixers, Cuisinart delivers high-quality small appliances designed to simplify your meal preparation.

Cookware & Bakeware | Cuisinart

12" Everlasting Non-Stick Stainless Steel Stir-Fry Pan/Wok with Cover

Cafetières - Cuisinart

La chambre forte est ouverte - édition de juillet. Obtenez jusqu'à 45 % de rabais jusqu'au 31 juillet. Magasiner maintenant

Small Digital Air Fryer, 2.6-qt Basket (AIR-80) - Cuisinart

Air fry, bake, or broil with the Cuisinart 2.6-Qt Basket Air Fryer. Perfect for small kitchens or cooking for 1-2 people. Dishwasher-safe basket and crisper plate.

Cuisinart | Retailers

Retail Partners Cuisinart products are available in the stores below and at many other fine retailers. Please select the 'Store Locator' link to find the store nearest you. For specific ...

Cuisinart's Kitchen Appliances for Professional and Home Chefs

Discover a full-service culinary company Cuisinart. Shop our prestigious kitchen appliances, cookware, and more.

9-Cup Continuous Feed Food Processor - Cuisinart

Meal preparation is faster and easier with the 9-Cup Food Processor by Cuisinart ®. The premium universal blade for chopping, mixing dough and reversible slicing and shredding discs offer full ...

Appliances | Cuisinart

La chambre forte est ouverte – édition de juillet. Obtenez jusqu'à 45 % de rabais jusqu'au 31 juillet.
Magasiner maintenant

Custom 14™ 14-Cup Food Processor - cuisinart.ca

Cuisinart makes cooking for crowds easy and fast with the Custom 14™ 14 Cup Food Processor. Made from brushed stainless steel, this sleek kitchen workhorse is a breeze to use and will ...

Appliances | Cuisinart

Showing 12 of 142 productsShowing

Small Kitchen Appliances - cuisinart.ca

Small Kitchen Appliances From our iconic food processors to coffeemakers and stand mixers, Cuisinart delivers high-quality small appliances designed to simplify your meal preparation.

Cookware & Bakeware | Cuisinart

12" Everlasting Non-Stick Stainless Steel Stir-Fry Pan/Wok with Cover

Cafetières - Cuisinart

La chambre forte est ouverte – édition de juillet. Obtenez jusqu'à 45 % de rabais jusqu'au 31 juillet.
Magasiner maintenant

Small Digital Air Fryer, 2.6-qt Basket (AIR-80) - Cuisinart

Air fry, bake, or broil with the Cuisinart 2.6-Qt Basket Air Fryer. Perfect for small kitchens or cooking for 1-2 people. Dishwasher-safe basket and crisper plate.

Cuisinart | Retailers

Retail Partners Cuisinart products are available in the stores below and at many other fine retailers. Please select the 'Store Locator' link to find the store nearest you. For specific ...

Explore our comprehensive Cuisinart coffee maker parts diagram to easily identify and replace components. Learn more about keeping your coffee maker in top shape!

[Back to Home](#)