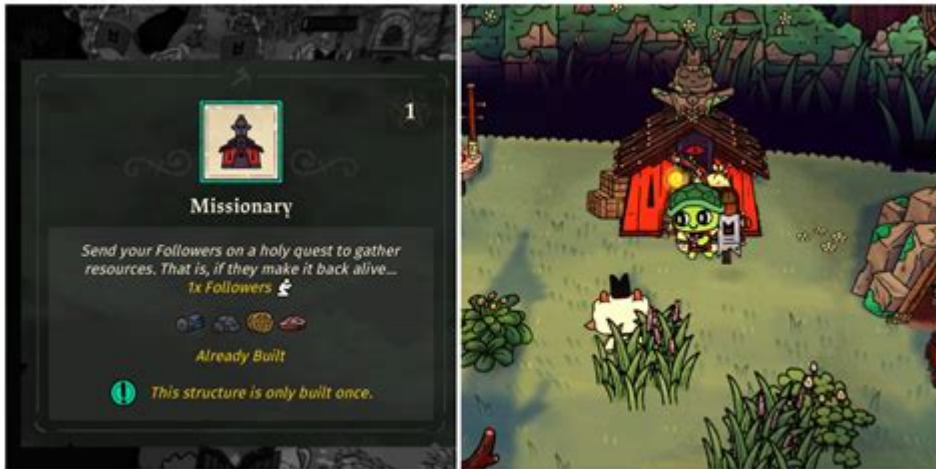


Cult Of The Lamb Missionary Guide



Cult of the Lamb Missionary Guide is an essential resource for players seeking to navigate the complex world of this unique game. In Cult of the Lamb, players assume the role of a possessed lamb who must build a following and establish a cult in a vibrant, yet perilous, world filled with dark and whimsical themes. This guide will provide you with everything you need to know about sending your devoted followers on missions, optimizing your cult's growth, and ensuring your survival against the numerous challenges that lie ahead.

Understanding Missionaries in Cult of the Lamb

In Cult of the Lamb, missionaries are a pivotal part of your strategy. They allow you to expand your influence, gather resources, and convert new followers. Knowing how to effectively use missionaries can significantly impact your cult's success.

What Are Missionaries?

Missionaries are followers you send out on quests to gather resources, spread your cult's message, and recruit new members. They can be sent on missions to find:

- Resources (wood, stone, etc.)
- Followers (new cult members)
- Special items or relics
- Gold or other valuable currencies

Why Use Missionaries?

Using missionaries provides several advantages:

1. **Resource Gathering:** Resources are vital for building and upgrading your cult. Missionaries can bring back supplies that facilitate expansion.
2. **Recruitment:** Sending missionaries out increases the chances of recruiting new followers, which is crucial for cult growth.
3. **Cult Influence:** Your cult's influence expands as missionaries spread your message, attracting more followers and resources.

How to Send Missionaries

Sending missionaries on their quests is a simple yet strategic process. Follow these steps to maximize your missionary efforts:

Step 1: Prepare Your Followers

Before sending out missionaries, ensure that your followers are well-prepared:

- **Level Up:** Higher-level followers perform better on missions. Focus on leveling up your most loyal members.
- **Equip Them:** Some followers may have items or skills that enhance their effectiveness on missions. Equip them accordingly.

Step 2: Choose a Mission Type

Decide what type of mission you want to send your followers on:

- **Resource Missions:** Good for gathering materials.
- **Recruitment Missions:** Ideal for increasing your follower count.
- **Exploratory Missions:** Useful for discovering hidden treasures or relics.

Step 3: Assign the Mission

Once you've chosen your mission type, select the followers you wish to send:

1. Open the mission menu.
2. Choose the mission type.
3. Select your followers based on their abilities and levels.
4. Confirm the mission assignment.

Optimizing Mission Success Rates

To ensure that your missionaries are as effective as possible, consider the following tips:

Follower Skills and Traits

Each follower has unique skills and traits that can influence mission success. Pay attention to:

- Strength: Followers with high strength can gather more resources.
- Charisma: Charismatic followers are better at recruiting new members.
- Luck: Higher luck increases the chance of finding rare items.

Mission Duration and Timing

Mission durations can affect the outcome. Consider the following:

- Short Missions: Typically yield lower rewards but are safer and have a higher success rate.
- Long Missions: Offer greater rewards but come with increased risks. Make sure to prepare your followers adequately.

Upgrade Your Cult

Invest in upgrades that improve your cult's capabilities:

- Mission Management: Unlock upgrades that decrease mission times or increase resource yields.
- Follower Training: Improve the skills and abilities of your followers to increase their effectiveness on missions.

Managing Your Cult Effectively

In addition to sending out missionaries, managing your cult efficiently is crucial:

Resource Management

Resources are the lifeblood of your cult. Ensure that you are:

- Collecting Regularly: Gather resources frequently to avoid shortages.
- Building Sustainable Structures: Invest in structures that help with resource generation over time.

Follower Happiness

Happy followers are more productive. Keep your followers content by:

- Providing Food: Ensure they have enough to eat.
- Improving Comfort: Build structures that enhance their living conditions.
- Engaging with Them: Spend time interacting with followers to boost their morale.

Balancing Missions and Cult Activities

Ensure that you find a balance between sending out missionaries and managing your cult's daily needs. Too many missions can lead to neglecting the happiness and well-being of your followers.

Advanced Strategies for Missionaries

As you progress in Cult of the Lamb, you will encounter more complex scenarios. Here are some advanced strategies to consider:

Special Missions

Look out for special missions that may offer unique rewards or challenges. These can include:

- Event Missions: Occasional events may provide bonuses or rare items.
- Boss Missions: Challenging but can yield powerful rewards.

Team Composition

When selecting followers for missions, consider forming balanced teams:

- Diverse Skills: Mix followers with different skills to tackle a variety of challenges.
- Backup Plans: Always have a backup follower in case one gets overwhelmed or fails.

Conclusion

In conclusion, understanding the intricacies of the **Cult of the Lamb** **Missionary Guide** is essential for building a successful cult. By effectively utilizing your missionaries, managing your resources, and keeping your followers happy, you can create a thriving community that stands the test of time. Remember to adapt your strategies as you progress, and always be on the lookout for new opportunities to expand your influence in this whimsical yet dark world. Happy culting!

Frequently Asked Questions

What is the primary purpose of a missionary in 'Cult of the Lamb'?

The primary purpose of a missionary in 'Cult of the Lamb' is to spread the faith of your cult, convert new followers, and gather valuable resources for your community.

How do I unlock the missionary feature in 'Cult of the Lamb'?

To unlock the missionary feature, you need to progress through the game until you establish your cult and reach a certain point in the storyline that introduces the missionary mechanic.

What are the best traits for followers to have when sending them on missionary missions?

The best traits for followers include those that increase loyalty, enhance resource gathering, and provide bonuses to conversion rates, as these traits help ensure successful missions.

How can I increase the success rate of my missionary missions?

You can increase the success rate by sending followers with high loyalty, providing them with adequate supplies, and selecting missions that match their skills and traits.

What types of resources can I gather through missionary missions?

Missionary missions can yield various resources such as wood, stone, food, and new followers, depending on the type of mission undertaken and the locations visited.

Are there any risks associated with sending missionaries on missions?

Yes, there are risks such as followers being lost during missions, encountering hostile factions, or returning with reduced loyalty if the mission fails or they face hardships.

How do I manage returned missionaries in 'Cult of the Lamb'?

Upon their return, you should check their loyalty levels, provide them with rest and support, and integrate any new resources they brought back into your cult to maintain morale.

Can I send multiple missionaries at once, and how does that affect outcomes?

Yes, you can send multiple missionaries at once, which can improve the chances of successful missions and gather more resources, but it also increases the risk since more followers are at stake.

Find other PDF article:

<https://soc.up.edu.ph/64-frame/files?ID=aWR37-4027&title=unit-stoichiometry-practice-with-mass-mass-calcs.pdf>

Cult Of The Lamb Missionary Guide

□□□□□□cult film□□□□□□ - □□

Cult Film / **TOP 50 cult film**

□□□□□□ (Cult) □□□□□□ - □□

[illegible]

`cult` ...

2 Cult 3
Cult

cult□□□□□□ - □□

[illegible]

□□□□ (*Cult Film*) - □□

(Cult Film)

Part B: Cult Film - 10

日本cult filmの“カウボーイ”と“サイコ”の対比を論じた論文。cult filmの
 定義やカウボーイ・サイコの定義、その歴史、そして現代の日本における
 カウボーイ・サイコの位置づけについて論じている。

Buddhism - Buddhism

Böyük Kult ... “...”
... ..

Unlock the secrets to success with our Cult of the Lamb missionary guide! Discover strategies

[Back to Home](#)