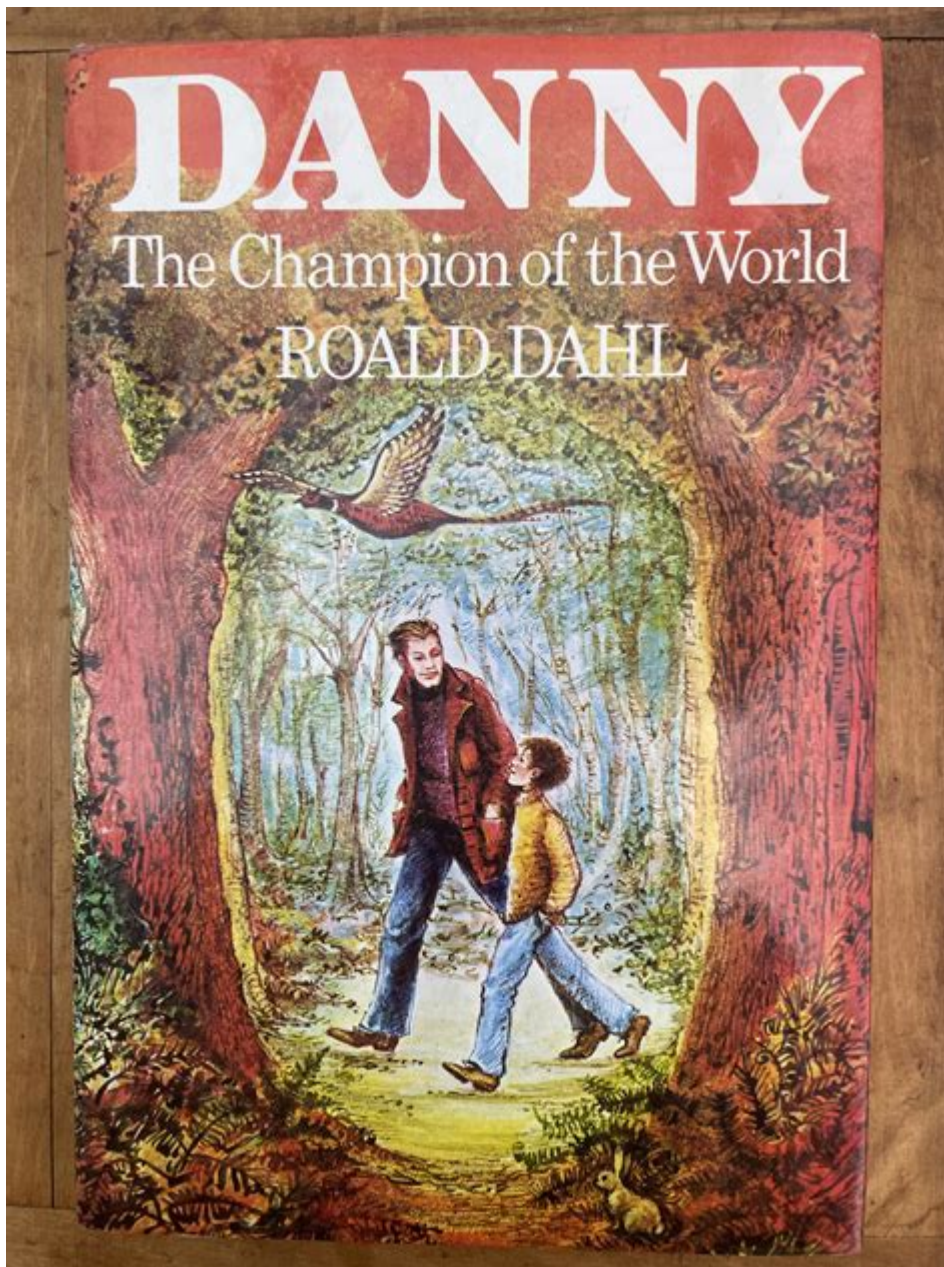


Danny The Champion Of The World Setting



Danny the Champion of the World is a beloved children's novel written by Roald Dahl, published in 1975. Set in the picturesque countryside of England, the story revolves around the profound bond between a young boy named Danny and his father, William. The narrative unfolds against a backdrop of adventure, ingenuity, and a deep appreciation for the natural world, encapsulating the essence of childhood wonder and the warmth of familial love. This article delves into the various aspects of the setting in "Danny the Champion of the World," exploring its physical, social, and emotional landscapes.

Physical Setting

The Countryside

The novel is primarily set in the serene English countryside, characterized by rolling hills, lush forests, and open fields. The physical landscape serves as more than just a backdrop; it plays a crucial role in shaping the story and the characters' experiences.

- **Scenic Beauty:** The vivid descriptions of the countryside evoke a sense of tranquility and beauty. The natural setting is reflective of the idyllic life Danny shares with his father, who runs a small filling station. The environment is filled with rich colors, sounds, and smells that come alive through Dahl's expressive writing.

- **Symbolism:** The countryside represents freedom and adventure. It is a place where Danny and his father can escape the constraints of society and embrace the wonders of nature. The vastness of the fields and the shadows of the trees symbolize the endless possibilities that await them.

Home and Family

Danny's home is a significant aspect of the physical setting. The filling station where Danny and his father live serves as the heart of their world.

- **Intimacy and Comfort:** The filling station is described as cozy and inviting, filled with the warmth of love and laughter. This setting reflects the close-knit relationship between Danny and his father, showcasing their strong bond and shared experiences.

- **A Place of Adventure:** The filling station also acts as a launching point for their escapades. It is here that Danny learns about his father's secret passion for poaching and begins to understand the thrill of adventure and the importance of standing up for what is right.

Social Setting

Community and Relationships

The social dynamics in "Danny the Champion of the World" are pivotal to the narrative. The characters and their relationships create a rich tapestry that enhances the story.

- **Danny and His Father:** The relationship between Danny and William is central to the plot. Their bond is strengthened through shared experiences, including their love for adventure and the challenges they face together. William's nurturing nature and Danny's youthful curiosity foster a relationship built on trust and mutual respect.

- **The Villagers:** The small community surrounding the filling station is depicted as a tight-knit group where everyone knows each other. The villagers play varying roles in the story, from supportive figures to antagonists, particularly the wealthy landowner, Mr. Victor Hazel, who represents the oppressive forces against Danny and his father.

Class and Social Status

The novel also touches on themes of class and social status, highlighting the differences between the working class and the wealthy landowners.

- **Struggles of the Working Class:** Danny and his father represent the working class, struggling to make ends meet while maintaining their dignity and sense of adventure. Their financial limitations contrast sharply with the wealth and entitlement of characters like Mr. Hazel.
- **Conflict and Resolution:** The social tension between the working class and the wealthy landowners creates a conflict that drives the narrative. Danny and his father's determination to outsmart Mr. Hazel and his unjust practices is a testament to the resilience of the underdog.

Emotional Setting

The Themes of Love and Loyalty

At its core, "Danny the Champion of the World" is a heartwarming tale about love, loyalty, and the bonds that unite family members.

- **Parental Love:** William's unwavering love for Danny is evident throughout the story. His willingness to risk everything for his son's happiness demonstrates the lengths a parent will go to protect and nurture their child.
- **Friendship and Loyalty:** The bond between Danny and his father extends beyond that of family; it is a friendship built on trust and shared dreams. This emotional connection is tested through the challenges they face, yet it ultimately emerges stronger.

Adventure and Courage

The emotional landscape of the novel is enriched by themes of adventure and courage.

- **The Thrill of Adventure:** Danny's journey into the world of poaching is filled with excitement and danger. The thrill of sneaking into the woods, setting traps, and outsmarting Mr. Hazel brings a sense of adventure that is both exhilarating and terrifying.
- **Courage in Adversity:** The story emphasizes the importance of courage in the face of challenges. Danny's bravery in supporting his father and standing up against injustice serves as a powerful message for young readers about the importance of facing fears and fighting for what is right.

The Role of Nature

Connection to the Environment

Nature plays a pivotal role in "Danny the Champion of the World," serving as both a setting and a character in its own right.

- **A Source of Inspiration:** The natural world inspires both Danny and his father, providing them with the resources and the motivation to pursue their adventures. The woods, fields, and animals become integral to their story, symbolizing freedom and the thrill of exploration.
- **Respect for Nature:** The novel also conveys a message about respecting the environment. William imparts lessons to Danny about the delicate balance of nature and the importance of ethical behavior, particularly regarding poaching. This respect for the natural world instills a sense of responsibility in young readers.

Conclusion

In "Danny the Champion of the World," Roald Dahl masterfully weaves together physical, social, and emotional settings to create a rich and engaging narrative. The English countryside serves as a backdrop for adventure and exploration, while the relationships between characters highlight themes of love, loyalty, and courage. The story encourages readers to appreciate the beauty of nature and the importance of standing up for what is right. Through the lens of a child's imagination and a father's love, Dahl crafts a timeless tale that resonates with readers of all ages, leaving an indelible mark on the landscape of children's literature.

Frequently Asked Questions

What is the primary setting of 'Danny the Champion of the World'?

The primary setting of 'Danny the Champion of the World' is a small, rural village in England where Danny lives in a gypsy caravan with his father, William.

How does the setting influence the relationship between Danny and his father?

The rural setting allows for a close-knit, adventurous lifestyle that strengthens the bond between Danny and his father, fostering their deep connection through shared experiences in nature.

What role does the countryside play in the story's themes?

The countryside serves as a backdrop for themes of freedom, adventure, and the importance of family, highlighting the contrast between the simplicity of rural life and the complexities of the outside world.

How does the setting contribute to the story's conflict?

The setting contributes to the conflict by introducing the threat posed by

the local gamekeeper, who represents the oppressive forces against Danny and his father's poaching adventures in their rural home.

Are there any significant landmarks in the setting of 'Danny the Champion of the World'?

Yes, significant landmarks include the gypsy caravan where Danny and his father live, the local woods where they go poaching, and the nearby village that represents the societal norms they challenge.

Find other PDF article:

<https://soc.up.edu.ph/62-type/pdf?trackid=kAt97-6768&title=total-truth-by-nancy-pearcey.pdf>

Danny The Champion Of The World Setting

QUERY | English meaning - Cambridge Dictionary

QUERY definition: 1. a question, often expressing doubt about something or looking for an answer from an authority.... Learn more.

QUERY Definition & Meaning - Merriam-Webster

The meaning of QUERY is question, inquiry. How to use query in a sentence. Synonym Discussion of Query.

QUERY Definition & Meaning | Dictionary.com

Query definition: a question; an inquiry.. See examples of QUERY used in a sentence.

QUERY - Definition & Translations | Collins English Dictionary

Discover everything about the word "QUERY" in English: meanings, translations, synonyms, pronunciations, examples, and grammar insights - all in one comprehensive guide.

Query - Definition, Meaning & Synonyms | Vocabulary.com

A query is a question, or the search for a piece of information. The Latin root quaere means "to ask" and it's the basis of the words inquiry, question, quest, request, and query.

Query - definition of query by The Free Dictionary

query , inquiry, enquiry - A query is a single question; an inquiry (or enquiry) may be a single question or extensive investigation (i.e. a series of questions).

query noun - Definition, pictures, pronunciation and usage notes ...

Definition of query noun in Oxford Advanced Learner's Dictionary. Meaning, pronunciation, picture, example sentences, grammar, usage notes, synonyms and more.

query - WordReference.com Dictionary of English

v.t. to ask or inquire about: No one queried his presence. to question as doubtful or obscure: to query a statement. Printing to mark (a manuscript, proof sheet, etc.) with a query. to ask questions of.

What does QUERY mean? - Definitions.net

A query refers to a request for specific information from a database or system. In the context of computing, it is a method used to retrieve or manipulate data from a structured database system using a specific language, such as SQL.

Query Definition & Meaning - YourDictionary

(computing, databases) A set of instructions passed to a database. The database admin switched on query logging for debugging purposes.

Navegador web Google Chrome

Para poder instalar Chrome y recibir una asistencia adecuada, tu dispositivo debe cumplir los requisitos mínimos del sistema. Consulta más información sobre cómo usar Chrome en tu ...

Descargar e instalar Google Chrome

Para instalar Chrome, usa el mismo software que utilices para instalar programas en tu ordenador. Debes introducir la contraseña de la cuenta de administrador.

Google Chrome: El navegador web rápido y seguro diseñado para ti

Chrome es el navegador web oficial de Google y está diseñado para ser veloz, seguro y personalizable. Descárgalo ahora y personalízalo.

Google Chrome - Download the fast, secure browser from Google

Get more done with the new Google Chrome. A more simple, secure and faster web browser than ever, with Google's smarts built in. Download now.

Descargar Chrome - Ayuda de Google Chrome

Puedes navegar por la Web en tu iPhone o iPad con Chrome. En tu iPhone o iPad, abre App Store. En la barra de búsqueda, ingresa Chrome. Presiona Obtener. Para instalarlo, sigue las...

Navegación segura y protegida | Chrome - Google

Descubre las funciones de seguridad innovadoras del navegador Google Chrome que ayudan a proteger tu privacidad cuando navegas por la Web.

Funciones y herramientas del navegador - Google Chrome

Descubre las funciones y herramientas del navegador que diferencian a Google Chrome y que te ayudan a centrarte.

Download and install Google Chrome

Download and install Google Chrome You can download and install the Chrome web browser at no charge, and use it to browse the web.

Google Chrome - Aplicaciones en Google Play

Novedades Gracias por elegir Chrome. Esta versión incluye mejoras de estabilidad y rendimiento.

Ayuda de Google Chrome

Centro de asistencia oficial de Google Chrome donde puedes encontrar sugerencias y tutoriales para aprender a utilizar el producto y respuestas a otras preguntas frecuentes

Explore the enchanting setting of "Danny the Champion of the World" and uncover how it shapes the

story's themes and characters. Discover how it all unfolds!

[Back to Home](#)