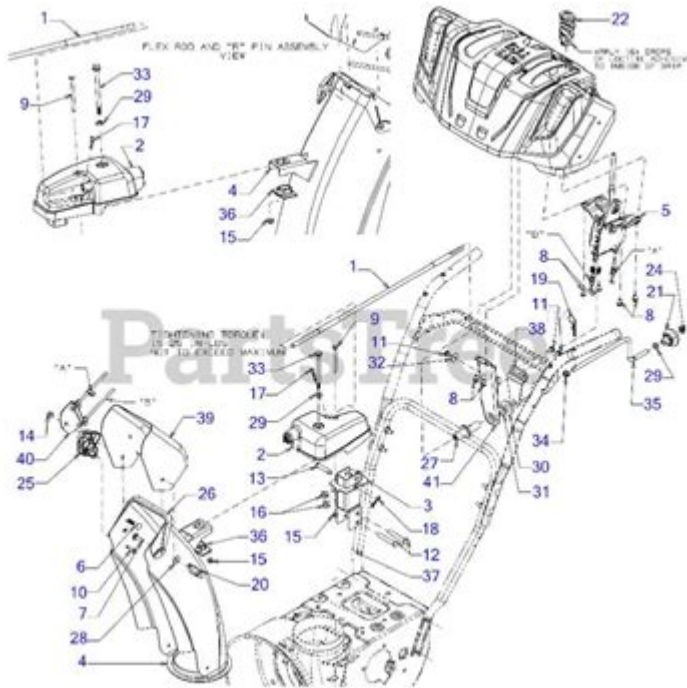


Cub Cadet 3x Snow Blower Parts Diagram



Cub Cadet 3X Snow Blower Parts Diagram

When it comes to snow clearing, having a reliable snow blower is essential, especially in regions that experience harsh winters. The Cub Cadet 3X series of snow blowers is known for its efficiency and durability, making it a popular choice among homeowners and professionals alike. Understanding the parts and components of your snow blower is crucial for maintenance, repair, and ensuring optimal performance. This article delves into the details of the Cub Cadet 3X snow blower parts diagram, helping you familiarize yourself with each part's function and importance.

Overview of Cub Cadet 3X Snow Blowers

Cub Cadet's 3X snow blower series is designed to tackle heavy snowfall with ease. Equipped with a powerful engine, these machines feature a three-stage system that allows for faster and more efficient snow removal compared to traditional two-stage models. The 3X snow blower series includes several models, each designed with specific features aimed at enhancing performance and user comfort.

Key Features of Cub Cadet 3X Snow Blowers

1. **Three-Stage System:** The three-stage process includes an auger, an accelerator, and a discharge chute, which work together to break up and move snow more efficiently.
2. **Powerful Engine:** Most models are powered by reliable engines that provide ample torque and speed for heavy-duty snow clearing.

3. Ergonomic Controls: User-friendly controls and adjustable handles make operation comfortable, even in harsh weather conditions.
4. Heated Handles: Some models come equipped with heated hand grips, ensuring comfort during extended use in cold temperatures.
5. LED Lights: Built-in LED lights enhance visibility during nighttime operation or in low-light conditions.

Understanding the Parts of a Cub Cadet 3X Snow Blower

To effectively maintain and repair your Cub Cadet 3X snow blower, it's important to understand the various parts that make up the machine. Below is a breakdown of the key components typically found in the parts diagram.

1. Engine Assembly

The engine is the heart of the snow blower, providing the power needed to operate all components. It typically includes:

- Carburetor: Regulates the fuel-air mixture for combustion.
- Fuel Tank: Stores fuel for the engine.
- Air Filter: Cleans incoming air to ensure efficient combustion.
- Spark Plug: Ignites the fuel-air mixture.

2. Auger System

The auger is responsible for breaking up the snow and drawing it into the machine. Components include:

- Auger Blades: Designed to cut and gather snow.
- Auger Gear Case: Houses the gears that drive the auger.
- Auger Shaft: Connects the auger blades to the engine.

3. Accelerator Assembly

The accelerator is crucial for moving snow through the machine and out the discharge chute. Key parts include:

- Accelerator: Rotates at high speed to propel the snow.
- Accelerator Housing: Protects the accelerator and directs the flow of snow.
- Drive Belts: Connects the engine to the accelerator for power transfer.

4. Discharge Chute

The discharge chute directs the snow away from the machine. Important elements include:

- Chute Assembly: The entire structure that allows snow to exit the blower.
- Chute Control Handle: Adjusts the direction of the discharge.
- Chute Deflector: Controls the height of the discharged snow.

5. Drive System

The drive system propels the snow blower forward. It consists of:

- Drive Wheels: Provide traction and movement.
- Wheel Hub: Connects the wheel to the axle.
- Transmission: Transfers power from the engine to the drive wheels.

6. Control Panel

The control panel contains various switches and levers needed to operate the snow blower. Components include:

- Ignition Switch: Starts the engine.
- Throttle Control: Adjusts the engine speed.
- Choke Lever: Helps with starting the engine in cold weather.

Maintaining Your Cub Cadet 3X Snow Blower

Proper maintenance is essential to prolong the life of your snow blower and ensure it operates efficiently. Here are some maintenance tips:

1. Regular Inspections: Regularly check for any loose screws, bolts, or parts that may need tightening or replacement.
2. Oil Changes: Change the engine oil as recommended in the owner's manual, typically after every 50 hours of operation.
3. Air Filter Cleaning: Clean or replace the air filter periodically to ensure optimal engine performance.
4. Spark Plug Replacement: Inspect and replace the spark plug as needed to ensure easy starting and combustion efficiency.
5. Fuel System Maintenance: Use fresh fuel and consider adding a fuel stabilizer if the snow blower will not be used for an extended period.

Where to Find the Parts Diagram

Locating a detailed parts diagram for your Cub Cadet 3X snow blower is crucial for identifying specific components for maintenance or repair. Here are a few places to find this information:

1. Owner's Manual: The owner's manual that came with your snow blower usually contains a parts diagram.
2. Cub Cadet Official Website: Visit the Cub Cadet website, where you can find support documents, including parts diagrams for various models.
3. Authorized Dealers: Local authorized Cub Cadet dealers often have access to parts diagrams and can assist with ordering specific parts.
4. Online Parts Retailers: Websites specializing in outdoor power equipment often provide parts diagrams and allow you to order parts online.

Conclusion

Understanding the Cub Cadet 3X snow blower parts diagram is vital for any owner looking to maintain and repair their machine effectively. By familiarizing yourself with the various components and their functions, you can ensure that your snow blower remains in optimal working condition, ready to tackle winter's toughest challenges. Regular maintenance and knowledge of your snow blower's parts will contribute to its longevity and performance, making your snow-clearing tasks easier and more efficient. Whether you are a seasoned snow blower user or a new owner, having this knowledge will empower you to take control of your equipment.

Frequently Asked Questions

What are the key components of the Cub Cadet 3X snow blower parts diagram?

The key components include the auger assembly, impeller, chute assembly, drive system, and control panel.

Where can I find the Cub Cadet 3X snow blower parts diagram?

You can find the parts diagram on the official Cub Cadet website, in the owner's manual, or through authorized dealers.

How do I interpret the symbols on the Cub Cadet 3X snow blower parts diagram?

Symbols typically represent different components and their functions; a legend is usually

provided alongside the diagram for clarification.

Are replacement parts for the Cub Cadet 3X snow blower readily available?

Yes, replacement parts can be easily found online or at local dealers specializing in Cub Cadet equipment.

What should I do if I can't find a specific part on the Cub Cadet 3X parts diagram?

If a specific part is not listed, consult the manufacturer or contact customer support for assistance in identifying the part.

Can I use the parts diagram for maintenance purposes?

Yes, the parts diagram is useful for identifying components that may need maintenance or replacement during regular servicing.

Is the Cub Cadet 3X snow blower parts diagram the same for all models?

No, the parts diagram may vary between different models; always refer to the diagram specific to your model.

How can I order parts using the Cub Cadet 3X snow blower parts diagram?

You can order parts by identifying the part number on the diagram and then placing an order through the Cub Cadet website or your local dealer.

What are the common issues that can be diagnosed using the parts diagram?

Common issues include auger jams, drive belt failures, and chute blockages, which can often be traced back to specific components shown in the diagram.

Do I need professional help to replace parts on my Cub Cadet 3X snow blower?

While some parts can be replaced with basic tools and knowledge, professional help is recommended for complex repairs.

Find other PDF article:

<https://soc.up.edu.ph/35-bold/files?docid=ZLT39-1910&title=joints-and-body-movements-exercise-10-answer-sheets.pdf>

Cub Cadet 3x Snow Blower Parts Diagram

cub -

Jul 13, 2024 · cubCUB1. CUB ...

PSB CUB FAB SB OB ...

PSB CUB FAB SB OB PSB CUB FAB SB OB 7

HONDA Super Cub C125

HONDA Super Cub C125 2019 11 Super Cub C125 1958 Super Cub C100 ...

NZQR ?

NZQR ?N (RZQZ*N ...

HONDA X Hello Kitty SUPER CUB 110

Mar 11, 2025 · 202450HELLO KITTY, HONDA 50HELLO KITTY SUPER CUB 110 ; ...

$cu\cup b=cua\cap cub$...

Mar 21, 2013 · 312a1cuaa ...

wland -

Sep 6, 2024 · wlandWland1. ** ...

cub -

cubCUBCENTER UTILITY BUILDING ...

OEMFOBSKDCKD _

OEMFOBSKDCKD1OEM ...

cub (cub)_

Apr 20, 2024 · cub cubB B CuBUBA (CuBAU (CuB),AB ...

cub -

Jul 13, 2024 · cubCUB1. CUB ...

PSB CUB FAB SB OB ...

PSB CUB FAB SB OB PSB CUB FAB SB OB 7

HONDA Super Cub C125 2019 11 Super Cub C125 1958
Super Cub C100 ...

[illegible]

Mar 11, 2025 · 2024年5月5日HELLO KITTY, HONDA 50
HELLO KITTY SUPER CUB 110 ; ...

[illegible]

Sep 6, 2024 · wland Wland 1. ** ** ...

```
00000000 cub CUB CENTER UTILITY BUILDING
00000000 ...
```

☐ OEM ☐ FOB ☐ SKD ☐ CKD ☒ 1 ☐ OEM

☐

☐ ...

Apr 20, 2024 · $\text{CuB} \text{U} \text{B} \text{A} (\text{CuB})$...

[Back to Home](#)