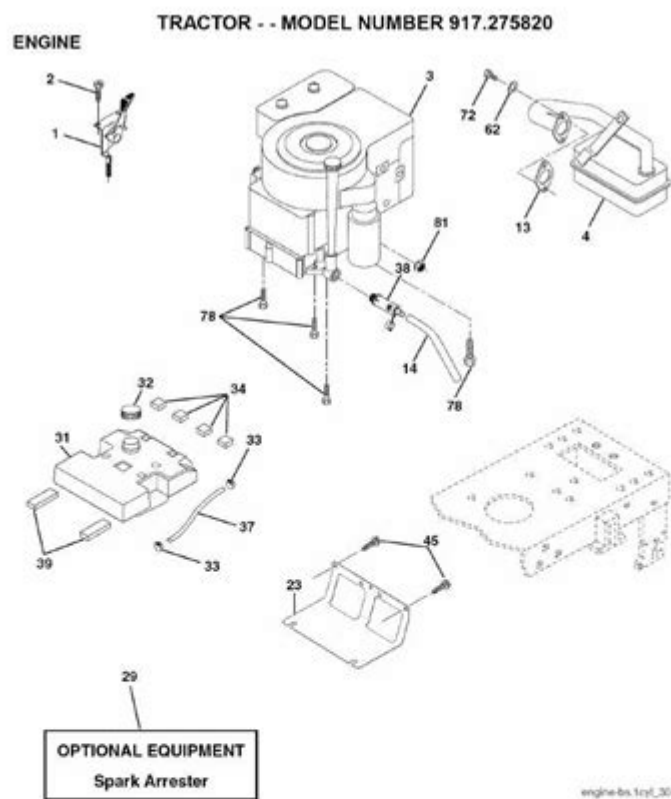


Craftsman Dlt 3000 Parts Diagram



KEY PART NO.	DESCRIPTION	KEY PART NO.	DESCRIPTION
1 170545	Control Throttle/Choke	38 181654	Plug, Drain Oil Easy
2 17720408	Screw Hex Thd Cut 1/4-20 x 5/8	39 109227X	Pad Idler 1.75 x .75 x .06
3 -----	Engine (See Breakdown) Briggs Model No. 31P777-0296-E1	44 17670412	Screw Hex Wash Thdrl 1/4-20 x 3/4
4 137352	Muffler Exhaust	45 17000612	Screw Hex Wash Thdrol 3/8-16 x 3/4
13 165291	Gasket Muffler	46 19091416	Washer 9/32 x 7/8 x 16 Ga.
14 148456	Tube, Drain Oil Easy	62 10010500	Washer Split
23 169837	Shield Browning/Debris Guard	72 71070512	Screw Hex Head Cap 5/16-18 x 3/4
29 137180	Arrestor Spark	78 17060620	Screw 3/8-16 x 1-1/4
31 157103	Tank Fuel	81 73510400	Nut, Keps 1/4-20 Starter Nut
32 161696	Cap Fuel		
33 123487X	Clamp Hose Bk		
34 105082X	Pad Spacer		
37 137040	Line Fuel		

NOTE: All component dimensions given in U.S. inches 1 inch = 25.4 mm

Craftsman DLT 3000 parts diagram is an essential tool for anyone who owns this reliable lawn tractor. This diagram serves as a comprehensive guide to understanding the various components of the DLT 3000, allowing users to identify, troubleshoot, and replace parts as necessary. With its powerful engine and robust design, the Craftsman DLT 3000 is known for its durability and efficiency in maintaining lawns. However, like any machine, it may require repairs or parts replacement over time. In this article, we will delve into the specifics of the Craftsman DLT 3000 parts diagram, discussing its key components, how to read it, and maintenance tips to keep your tractor running smoothly.

Understanding the Craftsman DLT 3000 Parts

Diagram

The parts diagram of the Craftsman DLT 3000 is a visual representation that outlines the various components of the lawn tractor. It is invaluable for both DIY enthusiasts and professional mechanics alike, as it provides clarity on the assembly and parts layout.

Components of the Parts Diagram

The parts diagram typically includes:

1. Engine Components:

- Engine block
- Carburetor
- Air filter
- Fuel pump
- Spark plug

2. Transmission Parts:

- Gearbox
- Drive belt
- Clutches
- Axles

3. Chassis and Frame:

- Front and rear frames
- Wheel assemblies
- Seat and support structures

4. Electrical System:

- Battery
- Wiring harness
- Ignition switch
- Fuses

5. Cutting Deck:

- Blades
- Spindle assembly
- Deck housing
- Lift mechanism

6. Miscellaneous Parts:

- Bolts and screws
- Washers and seals
- Tires and rims
- Belts and cables

How to Read the Parts Diagram

Reading the Craftsman DLT 3000 parts diagram can initially seem daunting, but understanding its layout and symbols can simplify the process. Here's a step-by-step guide on how to interpret the diagram:

1. **Identify the Sections:** The diagram is usually divided into sections based on the components listed above. Familiarize yourself with these sections to navigate the diagram efficiently.
2. **Look for Part Numbers:** Each component will have a corresponding part number. This number is essential when ordering replacements or discussing parts with a dealer or technician.
3. **Note the Descriptions:** Next to each part number, there will be a brief description of the component. This information is critical for ensuring you are looking at the right part.
4. **Use the Legend:** Many diagrams include a legend that explains any symbols or color coding used. Refer to this to understand specific notations.
5. **Cross-Reference with the Manual:** It's advisable to have the user manual on hand. This can provide additional context and details that may not be immediately clear from the diagram alone.

Importance of Regular Maintenance

Maintaining your Craftsman DLT 3000 not only prolongs its life but also enhances its performance. Regular checks and servicing can prevent major breakdowns and the need for extensive repairs. Here are some key maintenance practices:

Routine Checks

1. **Oil Changes:**
 - Change the oil every 50 hours of operation or at the beginning of each season.
 - Use the recommended oil type specified in the user manual.
2. **Air Filter Maintenance:**
 - Inspect the air filter monthly and replace it as needed.
 - A clean air filter improves engine performance and fuel efficiency.
3. **Blade Sharpening:**
 - Sharpen the mower blades at least once a season or more frequently if used heavily.
 - Dull blades tear the grass rather than cut, leading to a less healthy lawn.
4. **Tire Pressure:**
 - Check the tire pressure regularly and maintain it at the recommended levels.

- Proper tire pressure ensures optimal traction and reduces tire wear.

Seasonal Maintenance Tasks

1. Battery Care:

- Clean the battery terminals and check for corrosion.
- Ensure the battery is charged and functioning correctly, especially before the start of the mowing season.

2. Fuel System:

- Use fresh fuel and consider adding a fuel stabilizer if the tractor will not be used for an extended period.
- Inspect fuel lines for cracks or leaks and replace if necessary.

3. Deck Cleaning:

- After each mowing, clean the underside of the cutting deck to prevent grass buildup, which can lead to rusting and inefficiency.
- Inspect the deck for any damage or wear.

Common Issues and Troubleshooting

Even with regular maintenance, issues can arise with the Craftsman DLT 3000. Here are some common problems and their potential solutions:

Engine Won't Start

- Possible Causes:

1. Dead battery
2. Faulty ignition switch
3. Fuel issues (old or contaminated fuel)

- Solutions:

- Charge or replace the battery.
- Test the ignition switch and replace if faulty.
- Drain old fuel and replace it with fresh gasoline.

Uneven Cutting Height

- Possible Causes:

1. Dull blades
2. Uneven tire pressure
3. Improper deck adjustment

- Solutions:
- Sharpen or replace the mower blades.
- Check and adjust tire pressure to ensure consistency.
- Adjust the cutting deck to the desired height.

Excessive Vibration or Noise

- Possible Causes:
 1. Loose or damaged parts
 2. Worn drive belt
 3. Misaligned cutting deck
- Solutions:
 - Inspect all parts for looseness and tighten as needed.
 - Replace the drive belt if worn or damaged.
 - Realign the cutting deck according to the manufacturer's specifications.

Where to Find Replacement Parts

Finding the right replacement parts for the Craftsman DLT 3000 is crucial for maintaining its performance. Here are some options:

1. Authorized Dealers: Visit or call authorized Craftsman dealers for genuine parts.
2. Online Retailers: Websites like Amazon, eBay, and specialized lawn equipment retailers often carry a range of replacement parts.
3. Local Repair Shops: Many local repair shops can source parts or may have them in stock.
4. Manufacturer's Website: Check the official Craftsman website for parts diagrams and ordering options.

Conclusion

The Craftsman DLT 3000 parts diagram is not just a schematic; it's a roadmap for successful maintenance and repair of your lawn tractor. With a clear understanding of the components, proper maintenance practices, and knowledge of troubleshooting common issues, you can ensure that your DLT 3000 remains a reliable tool for years to come. Whether you're a seasoned mechanic or a beginner, having access to this information empowers you to take control of your lawn care equipment, saving you time and money in the long run.

Frequently Asked Questions

What is a Craftsman DLT 3000?

The Craftsman DLT 3000 is a riding lawn mower designed for residential use, featuring a powerful engine and various cutting options.

Where can I find the parts diagram for the Craftsman DLT 3000?

The parts diagram for the Craftsman DLT 3000 can typically be found in the owner's manual or on the official Craftsman website, as well as through various online retailers specializing in lawn mower parts.

Why is a parts diagram important for the Craftsman DLT 3000?

A parts diagram is essential for identifying specific components, understanding the assembly of the mower, and ensuring that you order the correct replacement parts.

How do I read the parts diagram for the Craftsman DLT 3000?

To read the parts diagram, locate the section corresponding to the mower's component you are interested in, and refer to the labeled parts and their respective numbers for ordering.

What common parts might I need to replace on the Craftsman DLT 3000?

Common parts that may need replacement include the air filter, spark plugs, blades, belts, and battery.

Can I download the parts diagram for the Craftsman DLT 3000?

Yes, many websites offer downloadable PDFs of the parts diagram for the Craftsman DLT 3000, which can be printed for easy reference.

Are there aftermarket parts available for the Craftsman DLT 3000?

Yes, there are aftermarket parts available for the Craftsman DLT 3000, which can be a cost-effective alternative to OEM parts.

How can I troubleshoot issues related to parts on my

Craftsman DLT 3000?

To troubleshoot issues, refer to the parts diagram to identify the components in question, check for wear and tear, and consult the owner's manual for diagnostic tips.

Find other PDF article:

<https://soc.up.edu.ph/63-zoom/files?docid=qAX33-2336&title=traxxas-tqi-receiver-wiring-diagram.pdf>

Craftsman Dlt 3000 Parts Diagram

[Home | CRAFTSMAN®](#)

Official website for CRAFTSMAN®. Explore power tools, outdoor equipment, hand tools, storage products and more.

[Find A Retailer | CRAFTSMAN](#)

Find a CRAFTSMAN® authorized provider near you and discover who sells CRAFTSMAN® tools online or in a retail store near you.

[Shop Parts | CRAFTSMAN](#)

Sometimes products wear down and need repair or maintenance. Fortunately, you have several options to fix your products with Craftsman Parts & Service.

[Power Tools and Accessories | CRAFTSMAN](#)

Browse high-performance power tools and accessories, including drivers, impacts, saws and more. Get the best quality for the job from Craftsman.

V20* 5.0AH Lithium Ion Battery | CRAFTSMAN

This V20* 5.0Ah Lithium Ion Battery is compatible with the CRAFTSMAN® V20* cordless power tool and outdoor tool lineup. The professional grade high performance cells provide improved ...

[Home & Outdoor - Garden Tools, Mowers & More | CRAFTSMAN](#)

When it comes to shaping up your yard, look no further than CRAFTSMAN® to find the right equipment for you. Browse cordless and gas tools at CRAFTSMAN®. Take on large lawns ...

[Shop All Mowers | CRAFTSMAN](#)

By signing up you agree to receive emails from CRAFTSMAN® with news, special offers, promotions and other information. You can unsubscribe at any time. See our Privacy Policy or ...

Customer Support | CRAFTSMAN

Find out more information about CRAFTSMAN® tools, warranty, parts, service, and more with our customer support resources.

[42 in. Gas Zero-Turn Riding Mower \(Z3200\) | CRAFTSMAN](#)

Transform your yard and mow up to 3 times faster than a walk behind*. The high-performance 42 in. Gas Zero-Turn Riding Mower (Z3200) features a powerful 547cc single-cylinder engine ...

[V20* System Cordless Power Tools | CRAFTSMAN](#)

Explore the CRAFTSMAN® V20* System of cordless power tools and products. The V20* System has the battery power, range and reliability to get your projects done.

[Home | CRAFTSMAN®](#)

Official website for CRAFTSMAN®. Explore power tools, outdoor equipment, hand tools, storage products and more.

Find A Retailer | CRAFTSMAN

Find a CRAFTSMAN® authorized provider near you and discover who sells CRAFTSMAN® tools online or in a retail store near you.

Shop Parts | CRAFTSMAN

Sometimes products wear down and need repair or maintenance. Fortunately, you have several options to fix your products with Craftsman Parts & Service.

[Power Tools and Accessories | CRAFTSMAN](#)

Browse high-performance power tools and accessories, including drivers, impacts, saws and more. Get the best quality for the job from Craftsman.

V20* 5.0AH Lithium Ion Battery | CRAFTSMAN

This V20* 5.0Ah Lithium Ion Battery is compatible with the CRAFTSMAN® V20* cordless power tool and outdoor tool lineup. The professional grade high performance cells provide improved ...

Home & Outdoor - Garden Tools, Mowers & More | CRAFTSMAN

When it comes to shaping up your yard, look no further than CRAFTSMAN® to find the right equipment for you. Browse cordless and gas tools at CRAFTSMAN®. Take on large lawns ...

Shop All Mowers | CRAFTSMAN

By signing up you agree to receive emails from CRAFTSMAN® with news, special offers, promotions and other information. You can unsubscribe at any time. See our Privacy Policy or ...

Customer Support | CRAFTSMAN

Find out more information about CRAFTSMAN® tools, warranty, parts, service, and more with our customer support resources.

42 in. Gas Zero-Turn Riding Mower (Z3200) | CRAFTSMAN

Transform your yard and mow up to 3 times faster than a walk behind*. The high-performance 42 in. Gas Zero-Turn Riding Mower (Z3200) features a powerful 547cc single-cylinder engine ...

V20 System Cordless Power Tools | CRAFTSMAN*

Explore the CRAFTSMAN® V20* System of cordless power tools and products. The V20* System has the battery power, range and reliability to get your projects done.

Explore our detailed Craftsman DLT 3000 parts diagram to easily identify and source replacement parts. Learn more and keep your lawn mower running smoothly!

[Back to Home](#)