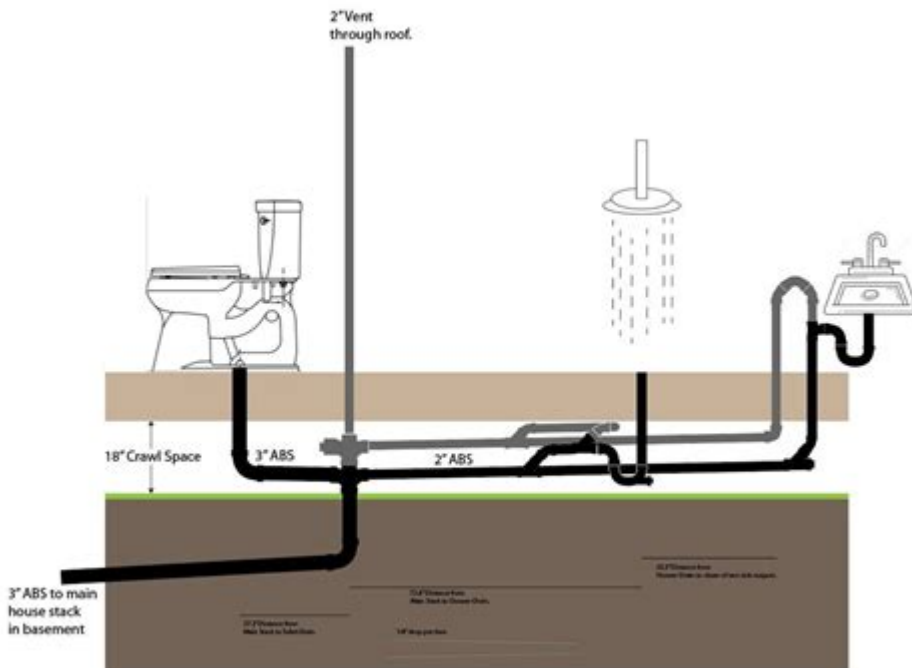


Crawl Space Plumbing Diagram



CRAWL SPACE PLUMBING DIAGRAM IS AN ESSENTIAL ASPECT OF HOME CONSTRUCTION AND MAINTENANCE THAT OFTEN GOES OVERLOOKED. UNDERSTANDING THE LAYOUT AND FUNCTION OF PLUMBING SYSTEMS IN CRAWL SPACES CAN HELP HOMEOWNERS AND BUILDERS ENSURE PROPER DRAINAGE, PREVENT WATER DAMAGE, AND AVOID COSTLY REPAIRS. THIS ARTICLE PROVIDES A COMPREHENSIVE OVERVIEW OF CRAWL SPACE PLUMBING DIAGRAMS, INCLUDING THEIR COMPONENTS, COMMON ISSUES, AND BEST PRACTICES FOR INSTALLATION AND MAINTENANCE.

WHAT IS A CRAWL SPACE?

A CRAWL SPACE IS A SHALLOW AREA BENEATH A BUILDING, TYPICALLY BETWEEN THE GROUND AND THE FIRST FLOOR, THAT PROVIDES ACCESS TO PLUMBING, ELECTRICAL, AND HVAC SYSTEMS. THESE SPACES OFTEN SERVE AS A BUFFER BETWEEN THE GROUND AND THE HOME, ALLOWING FOR VENTILATION AND REDUCING THE RISK OF MOISTURE BUILDUP.

IMPORTANCE OF CRAWL SPACE PLUMBING DIAGRAMS

A CRAWL SPACE PLUMBING DIAGRAM IS A VISUAL REPRESENTATION OF THE PLUMBING LAYOUT IN A CRAWL SPACE. IT SERVES SEVERAL IMPORTANT PURPOSES:

- **PLANNING AND DESIGN:** HELPS BUILDERS AND CONTRACTORS DESIGN EFFICIENT PLUMBING SYSTEMS.
- **MAINTENANCE:** ASSISTS HOMEOWNERS IN IDENTIFYING PLUMBING COMPONENTS AND THEIR FUNCTIONS.
- **PROBLEM-SOLVING:** AIDS IN DIAGNOSING ISSUES SUCH AS LEAKS OR BLOCKAGES.
- **COMPLIANCE:** ENSURES THAT THE PLUMBING SYSTEM MEETS LOCAL BUILDING CODES AND REGULATIONS.

COMPONENTS OF A CRAWL SPACE PLUMBING DIAGRAM

A TYPICAL CRAWL SPACE PLUMBING DIAGRAM INCLUDES THE FOLLOWING COMPONENTS:

PIPES

PIPES ARE THE PRIMARY CONDUITS FOR WATER SUPPLY AND DRAINAGE. THEY CAN BE MADE FROM VARIOUS MATERIALS, INCLUDING:

- **PVC (POLYVINYL CHLORIDE):** COMMONLY USED FOR DRAIN, WASTE, AND VENT SYSTEMS.
- **PEX (CROSS-LINKED POLYETHYLENE):** FLEXIBLE AND RESISTANT TO CORROSION, IDEAL FOR WATER SUPPLY LINES.
- **CPVC (CHLORINATED POLYVINYL CHLORIDE):** USED FOR HOT AND COLD WATER DISTRIBUTION.

FITTINGS

FITTINGS CONNECT DIFFERENT SECTIONS OF PIPES AND HELP CHANGE THE DIRECTION OF FLOW. COMMON TYPES INCLUDE:

- **ELBOWS:** CHANGE THE DIRECTION OF THE PIPE.
- **TEES:** ALLOW FOR BRANCH LINES.
- **COUPLINGS:** CONNECT TWO STRAIGHT SECTIONS OF PIPE.

FIXTURES

FIXTURES ARE THE ENDPOINTS OF A PLUMBING SYSTEM, WHERE WATER IS USED OR DRAINED. COMMON FIXTURES FOUND IN CRAWL SPACES INCLUDE:

- **SINKS:** USED FOR WASHING AND CLEANING.
- **TOILETS:** ESSENTIAL FOR SANITATION.
- **SHOWERS AND TUBS:** USED FOR BATHING.

DRAINAGE SYSTEMS

DRAINAGE SYSTEMS ARE CRUCIAL FOR PREVENTING WATER ACCUMULATION AND ENSURING PROPER WASTE DISPOSAL. KEY COMPONENTS INCLUDE:

- **DRAINS:** COLLECT WASTEWATER FROM FIXTURES.
- **TRAPS:** PREVENT SEWER GASES FROM ENTERING THE HOME.
- **VENTS:** ALLOW AIR TO ENTER THE PLUMBING SYSTEM, HELPING WASTEWATER FLOW SMOOTHLY.

COMMON ISSUES IN CRAWL SPACE PLUMBING

UNDERSTANDING A CRAWL SPACE PLUMBING DIAGRAM CAN HELP IDENTIFY AND ADDRESS COMMON PLUMBING ISSUES:

LEAKS

LEAKS CAN OCCUR IN JOINTS, FITTINGS, OR PIPES, OFTEN DUE TO CORROSION, IMPROPER INSTALLATION, OR FREEZING TEMPERATURES. DETECTING LEAKS EARLY CAN PREVENT SIGNIFICANT WATER DAMAGE.

CLOGS

CLOGS CAN OCCUR IN DRAINS DUE TO DEBRIS, GREASE, OR HAIR BUILDUP. THEY CAN LEAD TO SLOW DRAINAGE OR BACKUPS, NECESSITATING THE USE OF DRAIN SNAKES OR HYDRO JETTING.

IMPROPER VENTILATION

CRAWL SPACES REQUIRE PROPER VENTILATION TO PREVENT MOISTURE BUILDUP, WHICH CAN LEAD TO MOLD GROWTH AND STRUCTURAL DAMAGE. ENSURE VENTS ARE UNOBSTRUCTED AND FUNCTIONING CORRECTLY.

FROZEN PIPES

IN COLDER CLIMATES, PIPES IN UNINSULATED CRAWL SPACES MAY FREEZE, LEADING TO BURST PIPES AND SIGNIFICANT WATER DAMAGE. INSULATING PIPES AND MAINTAINING A CONSISTENT TEMPERATURE IN THE CRAWL SPACE CAN HELP MITIGATE THIS ISSUE.

DESIGNING A CRAWL SPACE PLUMBING DIAGRAM

CREATING AN EFFECTIVE CRAWL SPACE PLUMBING DIAGRAM INVOLVES CAREFUL PLANNING AND CONSIDERATION OF SEVERAL FACTORS:

1. ASSESSING THE LAYOUT

BEGIN BY ASSESSING THE LAYOUT OF THE CRAWL SPACE, INCLUDING ITS DIMENSIONS, ACCESS POINTS, AND EXISTING PLUMBING SYSTEMS. MEASURE THE DISTANCE BETWEEN FIXTURES AND NOTE ANY OBSTACLES, SUCH AS SUPPORT BEAMS OR DUCTWORK.

2. MAPPING OUT THE PLUMBING SYSTEM

USING GRAPH PAPER OR PLUMBING DESIGN SOFTWARE, START MAPPING OUT THE PLUMBING SYSTEM. INCLUDE THE FOLLOWING ELEMENTS:

- WATER SUPPLY LINES
- DRAINAGE LINES
- VENT PIPES
- FIXTURES AND APPLIANCES

3. ENSURING COMPLIANCE WITH CODES

CONSULT LOCAL BUILDING CODES AND REGULATIONS TO ENSURE YOUR PLUMBING DIAGRAM MEETS ALL REQUIREMENTS. THIS MAY INCLUDE SPECIFIC PIPE SIZES, MATERIALS, AND VENTING PRACTICES.

4. PLANNING FOR FUTURE MAINTENANCE

DESIGN THE PLUMBING SYSTEM WITH MAINTENANCE IN MIND. ENSURE THAT ALL COMPONENTS ARE ACCESSIBLE FOR REPAIRS OR INSPECTIONS, AND CONSIDER THE INSTALLATION OF CLEANOUTS FOR EASY ACCESS TO DRAINAGE LINES.

BEST PRACTICES FOR CRAWL SPACE PLUMBING INSTALLATION

WHEN INSTALLING PLUMBING IN A CRAWL SPACE, FOLLOWING BEST PRACTICES CAN HELP ENSURE A RELIABLE AND EFFICIENT SYSTEM:

- **USE QUALITY MATERIALS:** INVEST IN HIGH-QUALITY PIPES, FITTINGS, AND FIXTURES TO PREVENT FUTURE ISSUES.
- **INSULATE PIPES:** INSULATE WATER SUPPLY LINES TO PREVENT FREEZING AND REDUCE ENERGY COSTS.
- **ENSURE PROPER DRAINAGE:** GRADE THE CRAWL SPACE TO ENSURE WATER FLOWS AWAY FROM THE FOUNDATION.
- **VENTILATE THE SPACE:** PROVIDE ADEQUATE VENTILATION TO REDUCE MOISTURE LEVELS AND PREVENT MOLD GROWTH.
- **REGULAR INSPECTIONS:** SCHEDULE REGULAR INSPECTIONS OF THE PLUMBING SYSTEM TO IDENTIFY POTENTIAL ISSUES EARLY.

CONCLUSION

A WELL-STRUCTURED CRAWL SPACE PLUMBING DIAGRAM IS AN INVALUABLE TOOL FOR HOMEOWNERS AND BUILDERS ALIKE. BY UNDERSTANDING THE COMPONENTS AND LAYOUT OF THE PLUMBING SYSTEM, INDIVIDUALS CAN ENSURE PROPER FUNCTIONALITY, PREVENT COMMON ISSUES, AND MAINTAIN THE INTEGRITY OF THEIR HOMES. WHETHER DESIGNING A NEW PLUMBING SYSTEM OR TROUBLESHOOTING EXISTING PROBLEMS, HAVING A CLEAR UNDERSTANDING OF CRAWL SPACE PLUMBING CAN SAVE TIME AND MONEY IN THE LONG RUN. REGULAR MAINTENANCE, ADHERENCE TO BUILDING CODES, AND A FOCUS ON QUALITY MATERIALS ARE ESSENTIAL FOR CREATING A PLUMBING SYSTEM THAT STANDS THE TEST OF TIME.

FREQUENTLY ASKED QUESTIONS

WHAT IS A CRAWL SPACE PLUMBING DIAGRAM?

A CRAWL SPACE PLUMBING DIAGRAM IS A VISUAL REPRESENTATION THAT OUTLINES THE LAYOUT AND CONNECTIONS OF PLUMBING SYSTEMS LOCATED IN THE CRAWL SPACE OF A BUILDING, DETAILING PIPES, FIXTURES, AND DRAINAGE SYSTEMS.

WHY IS A CRAWL SPACE PLUMBING DIAGRAM IMPORTANT?

IT IS IMPORTANT BECAUSE IT HELPS HOMEOWNERS AND PLUMBERS UNDERSTAND THE PLUMBING LAYOUT, IDENTIFY POTENTIAL ISSUES, AND PLAN FOR REPAIRS OR RENOVATIONS EFFECTIVELY.

WHAT COMPONENTS ARE TYPICALLY INCLUDED IN A CRAWL SPACE PLUMBING DIAGRAM?

COMPONENTS TYPICALLY INCLUDE SUPPLY LINES, DRAINAGE PIPES, VENT PIPES, CLEANOUTS, SEWER LINES, AND PLUMBING FIXTURES LIKE SINKS AND TOILETS.

HOW CAN I CREATE MY OWN CRAWL SPACE PLUMBING DIAGRAM?

TO CREATE YOUR OWN DIAGRAM, MEASURE THE CRAWL SPACE, IDENTIFY ALL PLUMBING COMPONENTS, AND USE GRAPH PAPER OR DIGITAL DESIGN TOOLS TO SKETCH THE LAYOUT ACCURATELY.

WHAT COMMON PROBLEMS CAN A CRAWL SPACE PLUMBING DIAGRAM HELP IDENTIFY?

IT CAN HELP IDENTIFY ISSUES SUCH AS LEAKS, BLOCKAGES, IMPROPER VENTING, AND MISALIGNED PIPES THAT MAY LEAD TO PLUMBING FAILURES OR WATER DAMAGE.

ARE THERE SPECIFIC BUILDING CODES I NEED TO FOLLOW WHEN CREATING A CRAWL SPACE PLUMBING DIAGRAM?

YES, BUILDING CODES VARY BY LOCATION, SO IT'S IMPORTANT TO CONSULT LOCAL PLUMBING CODES AND REGULATIONS TO ENSURE COMPLIANCE WHEN DESIGNING OR REVIEWING A CRAWL SPACE PLUMBING DIAGRAM.

CAN I FIND SAMPLE CRAWL SPACE PLUMBING DIAGRAMS ONLINE?

YES, MANY WEBSITES OFFER SAMPLE CRAWL SPACE PLUMBING DIAGRAMS THAT CAN SERVE AS TEMPLATES OR INSPIRATION FOR YOUR OWN PLUMBING LAYOUT.

SHOULD I HIRE A PROFESSIONAL TO CREATE A CRAWL SPACE PLUMBING DIAGRAM?

IF YOU ARE NOT EXPERIENCED WITH PLUMBING SYSTEMS, IT IS ADVISABLE TO HIRE A PROFESSIONAL PLUMBER TO CREATE AN ACCURATE AND CODE-COMPLIANT DIAGRAM TO AVOID POTENTIAL ISSUES.

Find other PDF article:

<https://soc.up.edu.ph/63-zoom/files?docid=ugR84-3060&title=transgender-history-susan-stryker.pdf>

Crawl Space Plumbing Diagram

Crawl[REDACTED] - [REDACTED]

Aug 14, 2014 · Crawl[REDACTED] steam[REDACTED] crawl[REDACTED]?[REDACTED]4[REDACTED]
[REDACTED]...

crawl up one's ass - WordReference Forums

Jan 21, 2017 · The Prince Regent George talking: - Ah, some little Scotsman in the war office who wants to crawl up me ass dug it up and brought it to me. In time of war, failure to secure His Majesty's gunpowder against the enemy is a criminal offence. Given the context, I'm guessing it's something like...

army crawl - WordReference Forums

May 4, 2013 · Comment traduirait-on en français « army crawl » le contexte étant l'enfant qui commence à marcher à quatre pattes, mais de cette façon spécifique.

crawl under a duck - WordReference Forums

Nov 23, 2008 · Quoting from the movie "Murder, my sweet" (1944): "Only reason I took the job is because my bank account was trying to crawl under a duck". How could I properly translate into Italian the underlined expression? Thanks

creep?crawl?_

Jul 3, 2008 · crawl: [krɔ:l] n. v. :crawlingly :crawled :crawled :crawling :crawls 1. The heavy traffic crawled through the narrow tunnel. 2. The baby often crawls on all fours. 3. He can ...

5700crawl/mts? ...

Nov 14, 2022 · 5700crawl/mts crawl-mts MTS
Crawl5

CRAWL~::~_

Jan 7, 2012 · CRAWL~::~

2_ ...

Jul 18, 2017 · survivor_crawl_speed * ()
survivor_crouch_speed * shift () survivor_limp_health *

crawl back under the rock from whence you came

Jul 30, 2021 · To tell someone to crawl back under the rock you came from (we would never use whence over here) is a very common expression indicating disgust with someone or their behaviour. The other form of this expression is "go back to the rock you crawled out from under" (Yup! Three prepositions in a row and it sounds perfectly fine!)

If you can't fly,then run; if you can't run,then_

Aug 24, 2017 · If you can't fly, then run; if you can't run, then walk; if you can't walk, then crawl, but whatever you do, you have to keep moving forward.

Crawl -

Aug 14, 2014 · Crawl steam crawl?4

crawl up one's ass - WordReference Forums

Jan 21, 2017 · The Prince Regent George talking: - Ah, some little Scotsman in the war office who wants to crawl up me ass dug it up and brought it to me. In time of war, failure to secure His ...

army crawl - WordReference Forums

May 4, 2013 · Comment traduirait-on en français « army crawl » le contexte étant l'enfant qui commence à marcher à quatre pattes, mais de cette façon spécifique.

crawl under a duck - WordReference Forums

Nov 23, 2008 · Quoting from the movie "Murder, my sweet" (1944): "Only reason I took the job is because my bank account was trying to crawl under a duck". How could I properly translate ...

creep?crawl?_

Jul 3, 2008 · crawl: [krɔ:l] n. v. :crawlingly :crawled :crawled :crawling :crawls 1. The ...

5700crawI/mts? ...

Nov 14, 2022 · 5700crawI/mts crawl-mtsMTS
Crawl ...

CRAWL~~~

Jan 7, 2012 · CRAWL~~~

2_ ...

Jul 18, 2017 · survivor_crawl_speed * ()
survivor_crouch_speed * shift () ...

crawl back under the rock from whence you came

Jul 30, 2021 · To tell someone to crawl back under the rock you came from (we would never use whence over here) is a very common expression indicating disgust with someone or their ...

If you can't fly,then run; if you can't run,then_

Aug 24, 2017 · If you can't fly, then run; if you can't run, then walk; if you can't walk, then crawl, but whatever you do, you have to keep moving forward.

Explore our comprehensive crawl space plumbing diagram to understand your home's plumbing layout better. Learn more about effective maintenance and solutions!

[Back to Home](#)