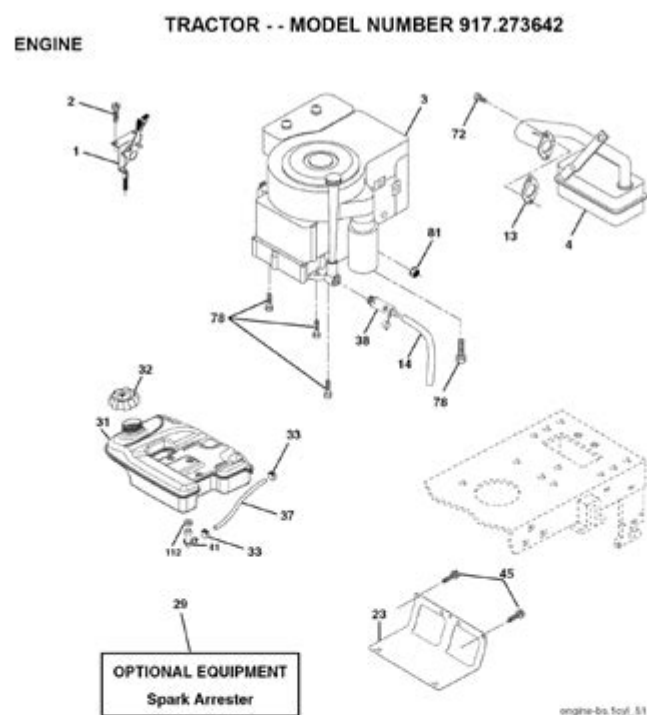


Craftsman Dyt 4000 Parts Manual



KEY PART NO.	NO.	DESCRIPTION	KEY PART NO.	NO.	DESCRIPTION
1	176636X505	Control Throttle	38	181654	Plug Drain Oil Easy
2	171875	Screw Hwdd Hi-Lo #13-16 x 3/4	41	139277	Stem Tank Fuel
3	-----	Engine, Briggs Model 31P777-0348-E1 (See Breakdown)	45	17000612	Screw Hexwash Thdr 3/8-16 x 3/4
4	137352	Muffler Asm Twin Lo-Tone	72	183906	Screw 5/16-18 x 1
13	165291	Muffler Gasket	78	17060620	Screw 3/8-16 x 1-1/4
14	148456	Tube Drain oil	81	73510400	Nut Keps Hex 1/4-20 unc
23	169837	Shield Heat	112	3645J	Bushing
29	137180	Kit Spark Arrester (Flat Scm)			
31	179022	Tank Fuel 4.0 Rear			
32	179124X428	Cap Asm Fuel			
33	123487X	Clamp Hose Black			
37	8543R	Line Fuel			

NOTE: All component dimensions given in U.S. inches 1 inch = 25.4 mm

Craftsman DYT 4000 Parts Manual

When it comes to maintaining and repairing your Craftsman DYT 4000 lawn tractor, having access to a comprehensive parts manual is essential. The DYT 4000 is a robust machine designed for durability and efficiency in lawn care tasks. However, like any mechanical equipment, it can experience wear and tear over time. A parts manual provides invaluable guidance on identifying, sourcing, and replacing the components necessary for keeping your tractor in optimal working condition. This article will delve into the specifics of the Craftsman DYT 4000 parts manual, including its contents, how to use it effectively, and where to find it.

Understanding the Craftsman DYT 4000

The Craftsman DYT 4000 is a riding lawn mower that offers a powerful engine, a comfortable riding experience, and a wide cutting deck, making it suitable for larger lawns. Key features of the DYT 4000 include:

- Engine: Typically equipped with a Briggs & Stratton engine
- Cutting Deck: 42-inch cutting deck for efficient mowing
- Transmission: Automatic transmission for easy operation
- Fuel Capacity: Holds up to 2.5 gallons of fuel
- Height Adjustment: Adjustable cutting heights for different grass types

The DYT 4000 is designed to handle various lawn care tasks, but regular maintenance is crucial to ensure its longevity and performance.

Contents of the Parts Manual

A Craftsman DYT 4000 parts manual typically includes a variety of sections that cover different aspects of the tractor. Here are the key components you can expect to find:

1. Introduction

The introduction section provides an overview of the tractor model, including its features and specifications. It sets the stage for understanding the importance of proper maintenance and parts replacement.

2. Safety Information

This section outlines safety precautions to take when operating or servicing the tractor. It includes warnings about using the correct tools, wearing appropriate safety gear, and ensuring the machine is turned off before performing any maintenance.

3. Parts Lists

The heart of the parts manual is the detailed parts lists. This section provides:

- Illustrated Diagrams: Visual representations of the tractor, highlighting various components.
- Part Numbers: Each component is assigned a unique part number for easy

identification.

- Descriptions: Brief descriptions of each part, including its function and location on the tractor.

4. Assembly and Disassembly Instructions

For users looking to replace specific parts, this section contains step-by-step instructions on how to disassemble and reassemble components. It may include:

- Removal and installation procedures for the cutting deck
- Instructions for changing the oil and filters
- Guidelines for replacing belts, blades, and other key components

5. Troubleshooting Guide

The troubleshooting guide helps users diagnose common issues that may arise during operation. It offers solutions to problems such as:

- Engine starting difficulties
- Uneven cutting or grass clumping
- Transmission issues

6. Maintenance Schedule

Regular maintenance is crucial for optimal performance. This section outlines a recommended maintenance schedule, including tasks such as:

- Oil changes (every 50 hours of operation)
- Blade sharpening (at the beginning of each mowing season)
- Air filter cleaning or replacement (every 25 hours)

How to Use the Parts Manual Effectively

Having a parts manual is one thing; knowing how to use it effectively is another. Here are some tips for making the most of your Craftsman DYT 4000 parts manual:

1. Familiarize Yourself with the Layout

Take some time to go through the manual and understand its structure. Knowing

where to find specific sections will save you time when troubleshooting or performing maintenance.

2. Use Part Numbers for Ordering

When you need to order replacement parts, always use the part numbers listed in the manual. This ensures you receive the correct components for your tractor.

3. Keep the Manual Accessible

Store your parts manual in a convenient location, such as a toolbox or a dedicated binder. This makes it easy to reference when needed, especially during repairs.

4. Make Notes

As you perform maintenance or repairs, consider making notes in the manual regarding any changes or observations. This can be helpful for future reference or for other users of the tractor.

Where to Find the Craftsman DYT 4000 Parts Manual

Finding a parts manual for the Craftsman DYT 4000 can be done through several channels, including:

1. Online Resources

- Official Craftsman Website: The Craftsman website often offers downloadable manuals for various models.
- Repair Parts Websites: Websites like RepairClinic, PartsTree, and eReplacementParts provide parts manuals and diagrams.
- Online Forums: Lawn care forums and communities can be a great resource for finding manuals and getting advice from experienced users.

2. Local Dealerships and Repair Shops

Local authorized Craftsman dealerships or lawn equipment repair shops may

have copies of the parts manual available for purchase or viewing.

3. eBay and Other Marketplaces

eBay and similar online marketplaces often have listings for original and reproduction parts manuals. Make sure to verify the accuracy of the manual before purchasing.

Common Parts for the Craftsman DYT 4000

To give you a better understanding of what you might need to replace, here are some common parts associated with the Craftsman DYT 4000:

1. Blades

- Part Number: 1711-040
- Description: Sharp cutting blades that need regular replacement to ensure an even cut.

2. Air Filter

- Part Number: 492932S
- Description: Keeps dirt and debris out of the engine for optimal performance.

3. Oil Filter

- Part Number: 491056S
- Description: Essential for maintaining clean oil circulation in the engine.

4. Drive Belt

- Part Number: 532-406963
- Description: Drives the cutting deck and needs to be replaced if worn or damaged.

5. Battery

- Part Number: 486748
- Description: Required for starting the engine and powering electrical components.

Conclusion

In conclusion, the Craftsman DYT 4000 parts manual is an essential resource for anyone owning this reliable lawn tractor. By understanding its contents and using it effectively, you can ensure that your tractor remains in good working order for years to come. Regular maintenance and timely repairs will not only enhance the performance of your machine but also extend its lifespan. Whether you're a seasoned DIYer or a novice, having the right information at your fingertips is crucial for successful lawn care.

Frequently Asked Questions

Where can I find the Craftsman DYT 4000 parts manual?

You can find the Craftsman DYT 4000 parts manual on the official Craftsman website, or through authorized retailers and online forums that specialize in lawn equipment.

What types of parts are included in the Craftsman DYT 4000 parts manual?

The Craftsman DYT 4000 parts manual typically includes diagrams and lists for essential components such as the engine, transmission, mower deck, electrical system, and more.

Is the Craftsman DYT 4000 parts manual available in digital format?

Yes, the Craftsman DYT 4000 parts manual is often available in digital format as a PDF, which can be downloaded for convenience and easy access.

How can I use the parts manual to troubleshoot my Craftsman DYT 4000?

You can use the parts manual to identify specific components related to your issue, reference diagrams for correct assembly, and locate part numbers for ordering replacements.

Are there any common issues addressed in the Craftsman DYT 4000 parts manual?

Yes, the Craftsman DYT 4000 parts manual often includes troubleshooting tips for common issues like starting problems, mower deck adjustments, and maintenance schedules.

Find other PDF article:

<https://soc.up.edu.ph/08-print/pdf?dataid=WOB31-7052&title=bape-a-bathing-ape-abathingapeus-twitter.pdf>

Craftsman Dyt 4000 Parts Manual

Home | CRAFTSMAN®

Official website for CRAFTSMAN®. Explore power tools, outdoor equipment, hand tools, storage products and more.

Find A Retailer | CRAFTSMAN

Find a CRAFTSMAN® authorized provider near you and discover who sells CRAFTSMAN® tools online or in a retail store near you.

Shop Parts | CRAFTSMAN

Sometimes products wear down and need repair or maintenance. Fortunately, you have several options to fix your products with Craftsman Parts & Service.

Power Tools and Accessories | CRAFTSMAN

Browse high-performance power tools and accessories, including drivers, impacts, saws and more. Get the best quality for the job from Craftsman.

V20* 5.0AH Lithium Ion Battery | CRAFTSMAN

This V20* 5.0Ah Lithium Ion Battery is compatible with the CRAFTSMAN® V20* cordless power tool and outdoor tool lineup. The professional grade high performance cells provide improved ...

Home & Outdoor - Garden Tools, Mowers & More | CRAFTSMAN

When it comes to shaping up your yard, look no further than CRAFTSMAN® to find the right equipment for you. Browse cordless and gas tools at CRAFTSMAN®. Take on large lawns ...

Shop All Mowers | CRAFTSMAN

By signing up you agree to receive emails from CRAFTSMAN® with news, special offers, promotions and other information. You can unsubscribe at any time. See our Privacy Policy or ...

Customer Support | CRAFTSMAN

Find out more information about CRAFTSMAN® tools, warranty, parts, service, and more with our customer support resources.

42 in. Gas Zero-Turn Riding Mower (Z3200) | CRAFTSMAN

Transform your yard and mow up to 3 times faster than a walk behind*. The high-performance 42 in. Gas Zero-Turn Riding Mower (Z3200) features a powerful 547cc single-cylinder engine ...

V20* System Cordless Power Tools | CRAFTSMAN

Explore the CRAFTSMAN® V20* System of cordless power tools and products. The V20* System has the battery power, range and reliability to get your projects done.

Home | CRAFTSMAN®

Official website for CRAFTSMAN®. Explore power tools, outdoor equipment, hand tools, storage products and more.

Find A Retailer | CRAFTSMAN

Find a CRAFTSMAN® authorized provider near you and discover who sells CRAFTSMAN® tools online or in a retail store near you.

Shop Parts | CRAFTSMAN

Sometimes products wear down and need repair or maintenance. Fortunately, you have several options to fix your products with Craftsman Parts & Service.

Power Tools and Accessories | CRAFTSMAN

Browse high-performance power tools and accessories, including drivers, impacts, saws and more. Get the best quality for the job from Craftsman.

V20* 5.0AH Lithium Ion Battery | CRAFTSMAN

This V20* 5.0Ah Lithium Ion Battery is compatible with the CRAFTSMAN® V20* cordless power tool and outdoor tool lineup. The professional grade high performance cells provide improved ...

Home & Outdoor - Garden Tools, Mowers & More | CRAFTSMAN

When it comes to shaping up your yard, look no further than CRAFTSMAN® to find the right equipment for you. Browse cordless and gas tools at CRAFTSMAN®. Take on large lawns and ...

Shop All Mowers | CRAFTSMAN

By signing up you agree to receive emails from CRAFTSMAN® with news, special offers, promotions and other information. You can unsubscribe at any time. See our Privacy Policy or Contact Us by ...

Customer Support | CRAFTSMAN

Find out more information about CRAFTSMAN® tools, warranty, parts, service, and more with our customer support resources.

42 in. Gas Zero-Turn Riding Mower (Z3200) | CRAFTSMAN

Transform your yard and mow up to 3 times faster than a walk behind*. The high-performance 42 in. Gas Zero-Turn Riding Mower (Z3200) features a powerful 547cc single-cylinder engine ...

V20* System Cordless Power Tools | CRAFTSMAN

Explore the CRAFTSMAN® V20* System of cordless power tools and products. The V20* System has the battery power, range and reliability to get your projects done.

Find the complete Craftsman DYT 4000 parts manual for maintenance and repairs. Access essential

info to keep your lawn tractor running smoothly. Learn more!

[Back to Home](#)