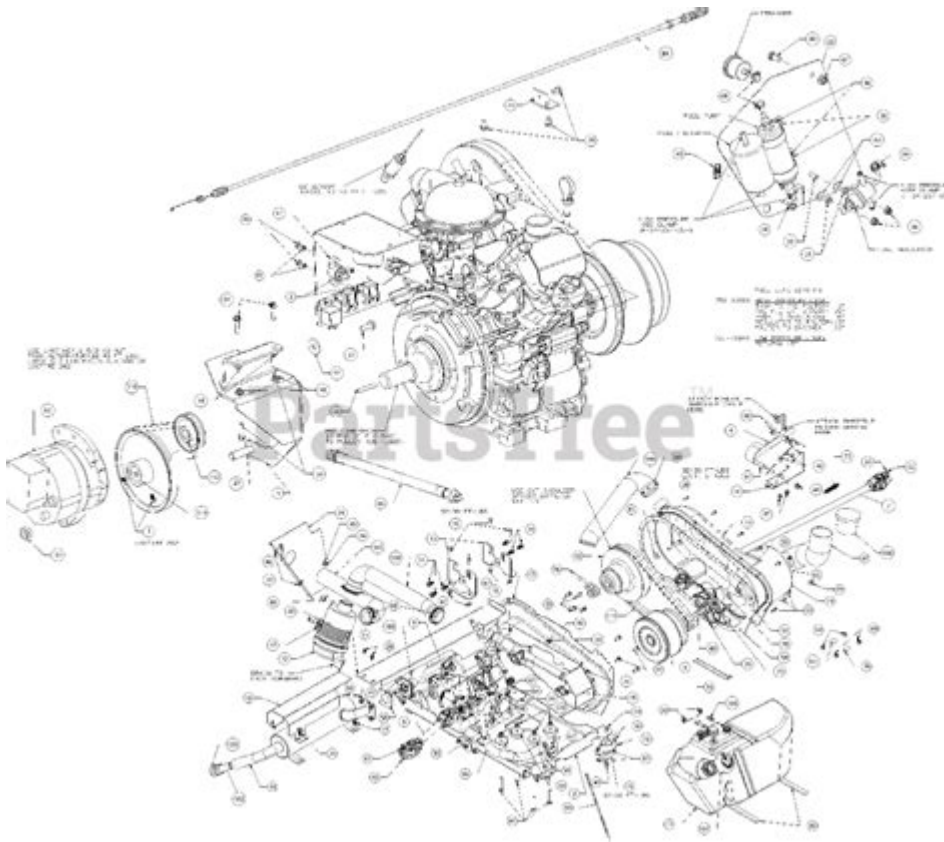


Cub Cadet Volunteer Parts Diagram



Cub Cadet volunteer parts diagram is an essential resource for anyone who owns or maintains a Cub Cadet volunteer lawn mower. Understanding the various components of your lawn mower can significantly enhance your ability to troubleshoot issues, perform maintenance, and ultimately extend the lifespan of your equipment. This article will provide a comprehensive overview of the Cub Cadet volunteer parts diagram, its importance, and how to interpret it effectively.

Understanding the Importance of a Parts Diagram

A parts diagram serves several critical functions for lawn mower owners. Here are some of the reasons why having access to a Cub Cadet volunteer parts diagram is essential:

- **Visual Reference:** It provides a clear visual representation of all components, helping you understand how they fit together.
- **Maintenance and Repairs:** Knowing the specific parts allows for easier identification of worn or broken components that need replacement.
- **Ordering Parts:** A diagram can help you accurately identify and order the

correct parts for repairs or upgrades.

- **Enhancing Knowledge:** It can increase your mechanical knowledge, making you more confident in performing maintenance tasks.

Components of the Cub Cadet Volunteer Parts Diagram

The Cub Cadet volunteer parts diagram typically consists of various sections, each representing different parts of the lawn mower. Here's a breakdown of some of the main components you might find:

1. Engine Assembly

The engine is the heart of the lawn mower. This section usually includes:

- **Crankshaft**
- **Piston**
- **Fuel Tank**
- **Carburetor**
- **Air Filter**

2. Cutting Deck

The cutting deck is crucial for the mower's performance. Key components include:

- **Blades**
- **Deck Shell**
- **Spindles**
- **Deck Lift Assembly**

3. Transmission

The transmission controls the movement of the mower. Important parts consist of:

- **Drive Belt**
- **Transmission Case**
- **Gear Shift Lever**

4. Chassis and Frame

The chassis supports all components of the mower. Key elements include:

- **Frame**
- **Wheels**
- **Axles**

5. Electrical Components

These components are essential for the functionality of the mower. They include:

- **Battery**
- **Ignition Switch**
- **Wiring Harness**

How to Use the Cub Cadet Volunteer Parts

Diagram

Using the parts diagram effectively can streamline your maintenance and repair processes. Follow these steps to maximize its utility:

1. **Familiarize Yourself:** Take some time to study the diagram. Understand the layout and how parts are labeled.
2. **Identify Issues:** When you encounter a problem, locate the relevant section of the diagram to identify the affected parts.
3. **Order Parts:** Once you've identified the necessary components, use the part numbers (if available) to order replacements from a trusted vendor.
4. **Perform Maintenance:** Use the diagram as a reference when performing routine maintenance tasks, ensuring all components are in good working order.

Where to Find a Cub Cadet Volunteer Parts Diagram

Finding a reliable parts diagram is crucial for effective maintenance and repair. Here are some sources to consider:

1. Official Cub Cadet Website

The official Cub Cadet website often has downloadable parts diagrams for various models. Look for the section dedicated to parts and accessories.

2. User Manuals

If you still have the original user manual for your mower, it usually contains a parts diagram specific to your model.

3. Online Retailers

Many online retailers that specialize in lawn care equipment and parts offer diagrams on their websites. Websites like eBay and Amazon may also have listings for parts with diagrams.

4. Lawn Care Forums

Community-driven forums often have members who share diagrams or can direct you to where you might find one.

Common Issues and Troubleshooting Tips

Understanding the parts diagram can help you troubleshoot common issues. Here are some frequent problems along with solutions based on component identification:

1. Engine Won't Start

Check the following components:

- **Battery:** Ensure it is charged and connected properly.
- **Fuel:** Confirm there is fuel in the tank and that the fuel lines are not clogged.
- **Ignition Switch:** Make sure it is functioning correctly.

2. Uneven Cutting

If your mower is cutting unevenly, inspect:

- **Blades:** Ensure they are sharp and properly aligned.
- **Deck Height:** Check if the cutting deck is set at the appropriate height.
- **Wheels:** Make sure all wheels are functioning correctly and at equal heights.

3. Transmission Issues

If the mower is not moving as expected, consider:

- **Drive Belt:** Inspect for wear and ensure it is properly tensioned.
- **Gear Shift Lever:** Make sure it is engaging properly.

Conclusion

In summary, the **Cub Cadet volunteer parts diagram** is an invaluable tool for anyone looking to maintain or repair their lawn mower. By understanding the various components and how to use the diagram effectively, you can enhance your mower's performance and longevity. Whether you are troubleshooting a problem or performing routine maintenance, having access to a reliable parts diagram will make the process much smoother. Make sure to utilize the various resources available to find the appropriate diagrams, and keep your lawn mower in top shape for years to come.

Frequently Asked Questions

What is a Cub Cadet Volunteer parts diagram?

A Cub Cadet Volunteer parts diagram is a visual representation that illustrates the various components and parts of the Cub Cadet Volunteer lawn mower, helping users identify and locate specific parts for maintenance or repair.

Where can I find a Cub Cadet Volunteer parts diagram?

You can find a Cub Cadet Volunteer parts diagram on the official Cub Cadet website, in the owner's manual, or on various online platforms that specialize in repair parts and diagrams.

Why is a parts diagram important for Cub Cadet Volunteer maintenance?

A parts diagram is important because it helps users understand the assembly of the mower, facilitates accurate ordering of replacement parts, and assists in troubleshooting issues effectively.

How do I read a Cub Cadet Volunteer parts diagram?

To read a Cub Cadet Volunteer parts diagram, identify the numbered parts listed in the diagram and match them with the corresponding part names and numbers in the parts list, ensuring you understand the layout and connections.

Can I order parts directly from the Cub Cadet Volunteer parts diagram?

Yes, after identifying the needed parts from the parts diagram, you can order them directly through the Cub Cadet website or authorized dealers by using the part numbers provided in the diagram.

Is there a difference between a parts diagram and a service manual?

Yes, a parts diagram focuses on the visual representation of parts and their arrangement, while a service manual provides detailed instructions on repair, maintenance procedures, and troubleshooting techniques.

Are Cub Cadet Volunteer parts diagrams the same for all models?

No, Cub Cadet Volunteer parts diagrams vary by model and year, so it is essential to use the specific diagram that corresponds to your mower's model for accurate part identification.

What should I do if I can't find a parts diagram for my Cub Cadet Volunteer?

If you can't find a parts diagram, you can contact Cub Cadet customer service or visit a local dealer for assistance, or check online forums and communities where other users may share diagrams.

Can I use a Cub Cadet Volunteer parts diagram for troubleshooting?

Yes, a parts diagram can aid in troubleshooting by helping you identify components that may be faulty or require inspection, allowing you to focus on specific areas of the mower.

Do I need special tools to work on parts indicated in the Cub Cadet Volunteer parts diagram?

Yes, depending on the part being replaced or repaired, you may require specific tools such as wrenches, screwdrivers, or specialized equipment to properly service the Cub Cadet Volunteer mower.

Find other PDF article:

<https://soc.up.edu.ph/11-plot/files?trackid=XjH56-6275&title=capitulo-5a-realidades-2-answer-key.pdf>

Cub Cadet Volunteer Parts Diagram

cub -

Jul 13, 2024 · cubCUB1. CUB ...

PSB CUB FAB SB OB ...
PSB CUB FAB SB OB PSB CUB FAB SB OB ...

HONDA Super Cub C125 - Mobile01
HONDA Super Cub C125 2019 11 Super Cub C125 1958 ...

NZQR ?
NZQR ?N (RZQZ* ...

HONDA X Hello Kitty SUPER CUB 110 - Mo...
Mar 11, 2025 · 202450HELLO KITTY, HONDA 50 ...

cub -
Jul 13, 2024 · cubCUB1. CUB ...

PSB CUB FAB SB OB
PSB CUB FAB SB OB PSB CUB FAB SB OB 7

HONDA Super Cub C125 - Mobile01
HONDA Super Cub C125 2019 11 Super Cub C125 1958
Super Cub C100 ...

NZQR ?
NZQR ?N (RZQZ*N* ...

HONDA X Hello Kitty SUPER CUB 110 - Mo...
Mar 11, 2025 · 202450HELLO KITTY, HONDA 50
HELLO KITTY SUPER CUB 110 ; ...

Explore our comprehensive Cub Cadet volunteer parts diagram to find the right components for your mower. Learn more about maintenance and repairs today!

[Back to Home](#)