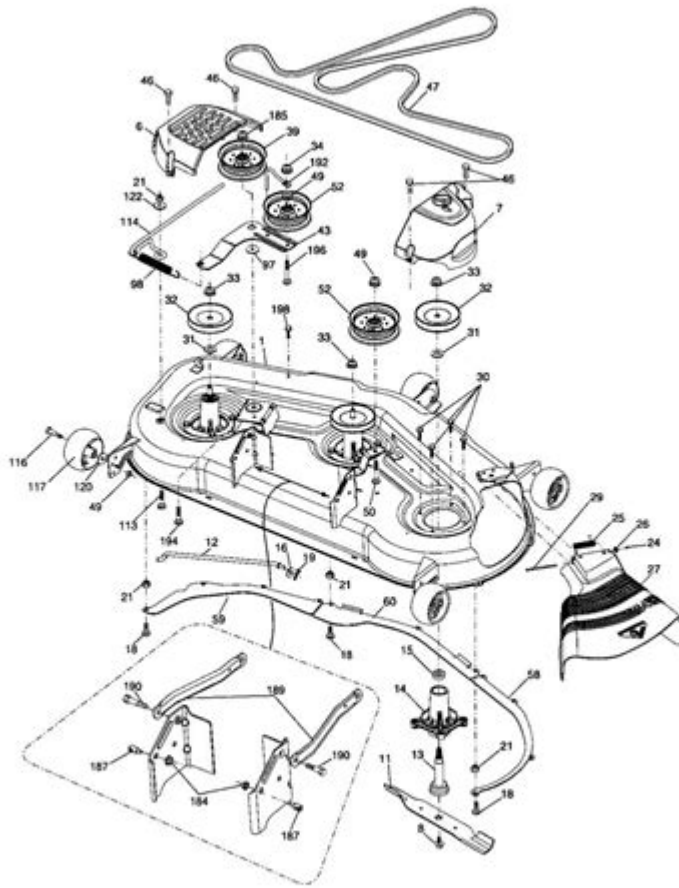


Craftsman Ys 4500 Parts Diagram



Craftsman YS 4500 Parts Diagram

The Craftsman YS 4500 is a popular riding lawn mower known for its durability and efficiency. When maintaining or repairing this machine, having an accurate parts diagram is essential for identifying components and understanding how they fit together. This article will provide an in-depth look at the Craftsman YS 4500 parts diagram, covering its various sections, common issues, and how to source replacement parts.

Understanding the Parts Diagram

The parts diagram for the Craftsman YS 4500 is a visual representation of the mower's components and their relationships to one another. It provides an essential resource for both DIY enthusiasts and professional technicians. The diagram is typically broken down into several sections, each representing different assemblies within the mower.

Major Components in the Parts Diagram

1. Engine Assembly

- This section includes the engine block, cylinder head, carburetor, and fuel lines. It is vital for powering the mower.

2. Transmission Assembly

- This part of the diagram illustrates the transmission system, including gears, belts, and the drive pulley. It is responsible for propelling the mower forward and backward.

3. Cutting Deck Assembly

- The cutting deck assembly features the blades, deck housing, and spindle assemblies. This section is crucial for the mower's cutting performance.

4. Steering and Control Assembly

- This includes the steering wheel, control levers, and cables. It governs how the mower is maneuvered.

5. Electrical System

- This section shows the wiring harness, ignition switch, battery, and starter motor. It is essential for the operation of the mower's electrical features.

6. Chassis and Frame

- The chassis supports all other components and provides structural integrity. This part of the diagram highlights the frame, wheels, and axle assemblies.

Common Issues and Repairs

Understanding the common issues that arise with the Craftsman YS 4500 can help you utilize the parts diagram effectively. Here are some frequent problems and their solutions.

1. Engine Not Starting

- Possible Causes:

- Dead battery
- Faulty ignition switch
- Clogged fuel filter
- Bad spark plug

- Solutions:

- Check the battery's charge and connections.
- Test the ignition switch for continuity.
- Replace the fuel filter if clogged.
- Inspect and replace the spark plug if worn out.

2. Uneven Cutting

- Possible Causes:

- Dull mower blades
- Uneven tire pressure
- Incorrect deck height adjustment

- Solutions:

- Sharpen or replace the blades.
- Ensure all tires are inflated to the recommended pressure.
- Adjust the cutting deck to the desired height.

3. Transmission Issues

- Possible Causes:

- Worn drive belt
- Low transmission fluid
- Damaged gears

- Solutions:

- Inspect and replace the drive belt if frayed.
- Check the transmission fluid level and top off if necessary.
- Examine gears and replace them if damaged.

Sourcing Replacement Parts

Finding the right replacement parts for your Craftsman YS 4500 is crucial for maintaining its performance. Here are some tips on where to look:

1. Authorized Dealers

- Visit local authorized Craftsman dealers or their websites. They often have a selection of genuine parts available for the YS 4500.

2. Online Retailers

- Websites such as Amazon, eBay, and specialized lawn equipment retailers offer a wide variety of replacement parts.
- Ensure that the parts are compatible with your specific mower model.

3. Local Repair Shops

- Many small engine repair shops carry commonly needed parts for lawn mowers. They can also help with installation if necessary.

Using the Parts Diagram Effectively

Once you have access to the Craftsman YS 4500 parts diagram, make the most out of it by following these steps:

1. Familiarize Yourself with the Components

Take time to study the diagram carefully. Recognizing each part's location and function will make repairs and maintenance much easier.

2. Label Parts When Disassembling

If you're disassembling any components for repair or replacement, label each part as you go along. This will save time during reassembly.

3. Follow Manufacturer Recommendations

Always refer to the owner's manual for specific maintenance schedules and part recommendations. This ensures optimal performance and longevity of your mower.

Conclusion

The Craftsman YS 4500 parts diagram is an invaluable tool for anyone looking to maintain or repair this reliable mower. By understanding the various sections of the diagram and common issues that may arise, you can effectively troubleshoot problems and ensure your mower operates efficiently. Remember to source your replacement parts carefully and follow best practices when performing repairs. With the right knowledge and resources, your Craftsman YS 4500 will continue to serve you well for years to come.

Frequently Asked Questions

What is the best way to find a Craftsman YS 4500 parts diagram?

The best way to find a Craftsman YS 4500 parts diagram is to visit the official Craftsman website or authorized dealer sites. You can also check online repair forums and parts retailers that offer diagrams.

Where can I purchase replacement parts for my Craftsman YS 4500?

Replacement parts for the Craftsman YS 4500 can be purchased from the Craftsman website, local hardware stores, or online retailers such as Amazon and eBay.

How can I identify the specific parts I need from the diagram?

You can identify specific parts by referring to the part numbers listed in the diagram and matching them with the parts available for purchase.

Are there any online resources for troubleshooting the Craftsman YS

4500 using the parts diagram?

Yes, many online resources including YouTube tutorials, repair forums, and blogs provide troubleshooting guides that utilize the parts diagram.

What should I do if my Craftsman YS 4500 parts diagram is unclear?

If the parts diagram is unclear, consider reaching out to customer service for assistance or looking for a higher resolution version of the diagram online.

Is there a PDF version of the Craftsman YS 4500 parts diagram available?

Yes, many sites offer downloadable PDF versions of the Craftsman YS 4500 parts diagram for easier access and printing.

Can I use parts from other models on my Craftsman YS 4500?

It is generally not recommended to use parts from other models unless specified in the parts diagram, as compatibility can vary.

How often should I consult the parts diagram for maintenance?

It is advisable to consult the parts diagram during major maintenance tasks, repairs, or when replacing worn parts to ensure proper assembly.

What common issues can I resolve by referring to the Craftsman YS 4500 parts diagram?

Common issues such as engine problems, blade replacement, and electrical issues can often be resolved by referencing the parts diagram.

Are there any videos that explain the Craftsman YS 4500 parts diagram?

Yes, many users create tutorial videos on platforms like YouTube that explain the Craftsman YS 4500 parts diagram and how to navigate it.

Find other PDF article:

<https://soc.up.edu.ph/16-news/files?dataid=aH114-9326&title=damian-lillard-injury-history.pdf>

Craftsman Ys 4500 Parts Diagram

Official website for CRAFTSMAN®. Explore power tools, outdoor equipment, hand tools, storage products and more.

Find A Retailer | CRAFTSMAN

Find a CRAFTSMAN® authorized provider near you and discover who sells CRAFTSMAN® tools online or in a retail store near you.

Shop Parts | CRAFTSMAN

Sometimes products wear down and need repair or maintenance. Fortunately, you have several options to fix your products with Craftsman Parts & Service.

Power Tools and Accessories | CRAFTSMAN

Browse high-performance power tools and accessories, including drivers, impacts, saws and more. Get the best quality for the job from Craftsman.

V20* 5.0AH Lithium Ion Battery | CRAFTSMAN

This V20* 5.0Ah Lithium Ion Battery is compatible with the CRAFTSMAN® V20* cordless power tool and outdoor tool lineup. The professional grade high performance cells provide improved ...

Home & Outdoor - Garden Tools, Mowers & More | CRAFTSMAN

When it comes to shaping up your yard, look no further than CRAFTSMAN® to find the right equipment for you. Browse cordless and gas tools at CRAFTSMAN®. Take on large lawns and ...

Shop All Mowers | CRAFTSMAN

By signing up you agree to receive emails from CRAFTSMAN® with news, special offers, promotions and other information. You can unsubscribe at any time. See our Privacy Policy or Contact Us by ...

Customer Support | CRAFTSMAN

Find out more information about CRAFTSMAN® tools, warranty, parts, service, and more with our customer support resources.

42 in. Gas Zero-Turn Riding Mower (Z3200) | CRAFTSMAN

Transform your yard and mow up to 3 times faster than a walk behind*. The high-performance 42 in. Gas Zero-Turn Riding Mower (Z3200) features a powerful 547cc single-cylinder engine ...

V20* System Cordless Power Tools | CRAFTSMAN

Explore the CRAFTSMAN® V20* System of cordless power tools and products. The V20* System has the battery power, range and reliability to get your projects done.

Home | CRAFTSMAN®

Official website for CRAFTSMAN®. Explore power tools, outdoor equipment, hand tools, storage products and more.

Find A Retailer | CRAFTSMAN

Find a CRAFTSMAN® authorized provider near you and discover who sells CRAFTSMAN® tools online or in a retail store near you.

Shop Parts | CRAFTSMAN

Sometimes products wear down and need repair or maintenance. Fortunately, you have several options to fix your products with Craftsman Parts & Service.

Power Tools and Accessories | CRAFTSMAN

Browse high-performance power tools and accessories, including drivers, impacts, saws and more. Get the best quality for the job from Craftsman.

V20* 5.0AH Lithium Ion Battery | CRAFTSMAN

This V20* 5.0Ah Lithium Ion Battery is compatible with the CRAFTSMAN® V20* cordless power tool and outdoor tool lineup. The professional grade high performance cells provide improved ...

Home & Outdoor - Garden Tools, Mowers & More | CRAFTSMAN

When it comes to shaping up your yard, look no further than CRAFTSMAN® to find the right equipment for you. Browse cordless and gas tools at CRAFTSMAN®. Take on large lawns ...

Shop All Mowers | CRAFTSMAN

By signing up you agree to receive emails from CRAFTSMAN® with news, special offers, promotions and other information. You can unsubscribe at any time. See our Privacy Policy or ...

Customer Support | CRAFTSMAN

Find out more information about CRAFTSMAN® tools, warranty, parts, service, and more with our customer support resources.

42 in. Gas Zero-Turn Riding Mower (Z3200) | CRAFTSMAN

Transform your yard and mow up to 3 times faster than a walk behind*. The high-performance 42 in. Gas Zero-Turn Riding Mower (Z3200) features a powerful 547cc single-cylinder engine ...

V20* System Cordless Power Tools | CRAFTSMAN

Explore the CRAFTSMAN® V20* System of cordless power tools and products. The V20* System has the battery power, range and reliability to get your projects done.

Explore our detailed Craftsman YS 4500 parts diagram to easily identify and order the parts you need. Learn more to keep your lawn mower running smoothly!

[Back to Home](#)