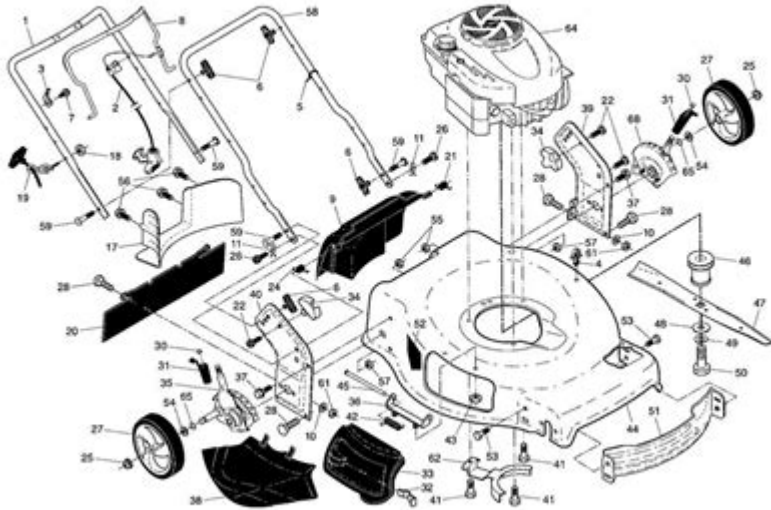


Craftsman M230 Parts Diagram



2/09

Craftsman M230 parts diagram is an essential tool for any owner of this lawn mower. Understanding the various components of your Craftsman M230 will help you with maintenance, repairs, and upgrades. This article serves as a comprehensive guide to the parts diagram, breaking down each component, its function, and how to maintain your mower for optimal performance.

Overview of the Craftsman M230

The Craftsman M230 is a self-propelled lawn mower designed for efficiency and ease of use. Equipped with a powerful engine and a range of features, the M230 is ideal for small to medium-sized lawns. Here are some key features of the M230:

- Engine Type: Gas-powered engine
- Cutting Width: 21 inches
- Drive System: Rear-wheel drive
- Cutting Height Adjustment: 6 positions
- Mulching Capability: Yes
- Weight: Approximately 75 lbs

Understanding the parts of your mower is crucial for maintenance and repairs, and the parts diagram acts as a roadmap for identifying these components.

Importance of the Parts Diagram

A Craftsman M230 parts diagram provides a visual representation of the mower's components, making it easier to identify each part and understand its function. Here are some reasons why a parts diagram is valuable:

1. **Simplifies Repairs:** Knowing the location and function of each part can significantly simplify the repair process.
2. **Facilitates Maintenance:** Regular maintenance is vital for any lawn mower, and a parts diagram can guide you in performing necessary checks and replacements.
3. **Enhances Upgrades:** If you're considering upgrading certain components, the diagram will help you understand compatibility.

Key Components of the Craftsman M230

The Craftsman M230 is composed of several key components, each serving a specific purpose. Here's a breakdown of these parts as shown in the Craftsman M230 parts diagram.

1. Engine Assembly

The engine assembly is the powerhouse of the mower. It converts fuel into mechanical energy that drives the mower.

- Engine Type: 140 cc gas engine
- Air Filter: Keeps debris out of the engine
- Spark Plug: Ignites the fuel-air mixture
- Fuel Tank: Stores gasoline for engine operation

2. Cutting Deck

The cutting deck is where the grass is cut. It's essential for maintaining a clean and even lawn.

- Blade: The main cutting component, typically 21 inches in diameter
- Deck Housing: Protects the blade and houses the cutting mechanism
- Height Adjustment Lever: Allows you to change the cutting height easily

3. Drive System

The drive system ensures that the mower moves forward and can be controlled effectively.

- Transmission: Transfers power from the engine to the wheels
- Drive Wheels: Rear wheels that provide traction
- Self-Propelled Mechanism: Engages when the handle is pushed forward

4. Handle Assembly

The handle assembly provides control and maneuverability for the mower.

- Upper Handle: The part you hold onto
- Lower Handle: Connects to the mower's body and provides stability
- Throttle Control: Adjusts the engine speed

5. Grass Catcher

The grass catcher collects cut grass for easy disposal.

- Bag: A cloth or plastic bag that collects grass clippings
- Frame: Supports the bag and attaches to the mower

6. Safety Features

Safety is paramount when operating any lawn equipment. The M230 includes several features designed to protect the user.

- Safety Key: Prevents accidental start-up
- Operator Presence Control: Stops the engine when the handle is released
- Blade Brake: Immediately stops the blade when needed

Maintenance Tips for Each Component

Maintaining each component of your Craftsman M230 is crucial for its longevity and performance. Here are some tips for keeping your mower in top shape.

Engine Assembly Maintenance

- Check Oil Levels: Regularly inspect and change the engine oil.
- Clean the Air Filter: A clean air filter ensures optimal engine performance.
- Replace Spark Plug: Change the spark plug annually for reliable starting.

Cutting Deck Maintenance

- Sharpen the Blade: A sharp blade cuts grass more effectively. Sharpen as needed, typically once per season.
- Clean the Deck: After each use, remove grass clippings and debris from the underside of the deck.
- Inspect for Damage: Check for dents or rust and repair as necessary.

Drive System Maintenance

- Check Drive Belt: Inspect the drive belt for wear and replace it if frayed.
- Lubricate Wheels: Regularly grease the wheel bearings to ensure smooth operation.
- Adjust Wheel Height: Check and adjust the wheel height for optimal traction.

Handle Assembly Maintenance

- Tighten Bolts: Ensure that all screws and bolts are tight to prevent wobbling.
- Check for Cracks: Inspect the handle for any signs of wear or damage.

Grass Catcher Maintenance

- Empty Regularly: Don't let the bag get too full, as this can affect performance.
- Clean the Bag: Wash the grass catcher to prevent odors and mildew.
- Inspect for Tears: Check for any holes and repair or replace the bag as necessary.

Safety Features Maintenance

- Test Safety Features: Regularly ensure that safety features are functioning correctly.
- Replace the Safety Key: If the key is lost or damaged, replace it immediately.

Conclusion

Understanding the Craftsman M230 parts diagram is essential for any owner looking to maintain or repair their mower. By familiarizing yourself with the various components and regularly performing maintenance, you can extend the life of your mower and enhance its performance. Whether you're dealing with the engine assembly or the cutting deck, knowledge of the parts will empower you to take better care of your equipment. Regular maintenance not only ensures that your mower operates efficiently but also enhances your lawn care experience, allowing you to achieve the perfect cut every time.

Frequently Asked Questions

What is the purpose of the Craftsman M230 parts diagram?

The Craftsman M230 parts diagram provides a visual representation of the mower's components, helping users identify parts for maintenance, repairs, and replacements.

Where can I find the Craftsman M230 parts diagram?

You can find the Craftsman M230 parts diagram on the official Craftsman website, in user manuals, or on various lawn care forums and parts retailers.

How can I use the parts diagram to troubleshoot my Craftsman M230?

You can use the parts diagram to locate specific components that may be malfunctioning or damaged, allowing you to diagnose issues and find the correct replacement parts.

What should I do if a part is missing from my Craftsman M230 after consulting the diagram?

If a part is missing, refer to the parts diagram to identify the specific part number and then order it through authorized dealers or online retailers.

Are there any online tools that allow me to view the Craftsman M230 parts diagram interactively?

Yes, some websites offer interactive parts diagrams where you can click on components to view part numbers and descriptions for the Craftsman M230.

Can I print the Craftsman M230 parts diagram for reference?

Yes, you can print the Craftsman M230 parts diagram from your browser or save it as a PDF for easier reference during repairs and maintenance.

What common parts are included in the Craftsman M230 parts diagram?

Common parts in the Craftsman M230 parts diagram include the engine, blades, wheels, belts, and various housing components.

Is the parts diagram the same for all Craftsman M230 models?

No, the parts diagram may vary slightly between different models of the Craftsman M230, so it's important to ensure you have the correct diagram for your specific model.

Find other PDF article:

<https://soc.up.edu.ph/36-tag/pdf?dataid=les84-5900&title=la-casa-de-aramberri-historia.pdf>

Craftsman M230 Parts Diagram

[Home](#) | [CRAFTSMAN®](#)

Official website for CRAFTSMAN®. Explore power tools, outdoor equipment, hand tools, storage products and more.

Find A Retailer | CRAFTSMAN

Find a CRAFTSMAN® authorized provider near you and discover who sells CRAFTSMAN® tools online or in a retail store near you.

Shop Parts | CRAFTSMAN

Sometimes products wear down and need repair or maintenance. Fortunately, you have several options to fix your products with Craftsman Parts & Service.

Power Tools and Accessories | CRAFTSMAN

Browse high-performance power tools and accessories, including drivers, impacts, saws and more. Get the best quality for the job from Craftsman.

V20* 5.0AH Lithium Ion Battery | CRAFTSMAN

This V20* 5.0Ah Lithium Ion Battery is compatible with the CRAFTSMAN® V20* cordless power tool and outdoor tool lineup. The professional grade high performance cells provide improved ...

Home & Outdoor - Garden Tools, Mowers & More | CRAFTSMAN

When it comes to shaping up your yard, look no further than CRAFTSMAN® to find the right equipment for you. Browse cordless and gas tools at CRAFTSMAN®. Take on large lawns ...

[Shop All Mowers](#) | [CRAFTSMAN](#)

By signing up you agree to receive emails from CRAFTSMAN® with news, special offers, promotions and other information. You can unsubscribe at any time. See our Privacy Policy or ...

Customer Support | CRAFTSMAN

Find out more information about CRAFTSMAN® tools, warranty, parts, service, and more with our customer support resources.

42 in. Gas Zero-Turn Riding Mower (Z3200) | CRAFTSMAN

Transform your yard and mow up to 3 times faster than a walk behind*. The high-performance 42 in. Gas Zero-Turn Riding Mower (Z3200) features a powerful 547cc single-cylinder engine ...

V20* System Cordless Power Tools | CRAFTSMAN

Explore the CRAFTSMAN® V20* System of cordless power tools and products. The V20* System has the battery power, range and reliability to get your projects done.

[Home](#) | [CRAFTSMAN®](#)

Official website for CRAFTSMAN®. Explore power tools, outdoor equipment, hand tools, storage

products and more.

Find A Retailer | CRAFTSMAN

Find a CRAFTSMAN® authorized provider near you and discover who sells CRAFTSMAN® tools online or in a retail store near you.

Shop Parts | CRAFTSMAN

Sometimes products wear down and need repair or maintenance. Fortunately, you have several options to fix your products with Craftsman Parts & Service.

Power Tools and Accessories | CRAFTSMAN

Browse high-performance power tools and accessories, including drivers, impacts, saws and more. Get the best quality for the job from Craftsman.

V20* 5.0AH Lithium Ion Battery | CRAFTSMAN

This V20* 5.0Ah Lithium Ion Battery is compatible with the CRAFTSMAN® V20* cordless power tool and outdoor tool lineup. The professional grade high performance cells provide improved ...

Home & Outdoor - Garden Tools, Mowers & More | CRAFTSMAN

When it comes to shaping up your yard, look no further than CRAFTSMAN® to find the right equipment for you. Browse cordless and gas tools at CRAFTSMAN®. Take on large lawns ...

Shop All Mowers | CRAFTSMAN

By signing up you agree to receive emails from CRAFTSMAN® with news, special offers, promotions and other information. You can unsubscribe at any time. See our Privacy Policy or ...

Customer Support | CRAFTSMAN

Find out more information about CRAFTSMAN® tools, warranty, parts, service, and more with our customer support resources.

42 in. Gas Zero-Turn Riding Mower (Z3200) | CRAFTSMAN

Transform your yard and mow up to 3 times faster than a walk behind*. The high-performance 42 in. Gas Zero-Turn Riding Mower (Z3200) features a powerful 547cc single-cylinder engine ...

V20* System Cordless Power Tools | CRAFTSMAN

Explore the CRAFTSMAN® V20* System of cordless power tools and products. The V20* System has the battery power, range and reliability to get your projects done.

Explore our comprehensive Craftsman M230 parts diagram to identify and order the right components for your machine. Learn more to keep your equipment running smoothly!

[Back to Home](#)