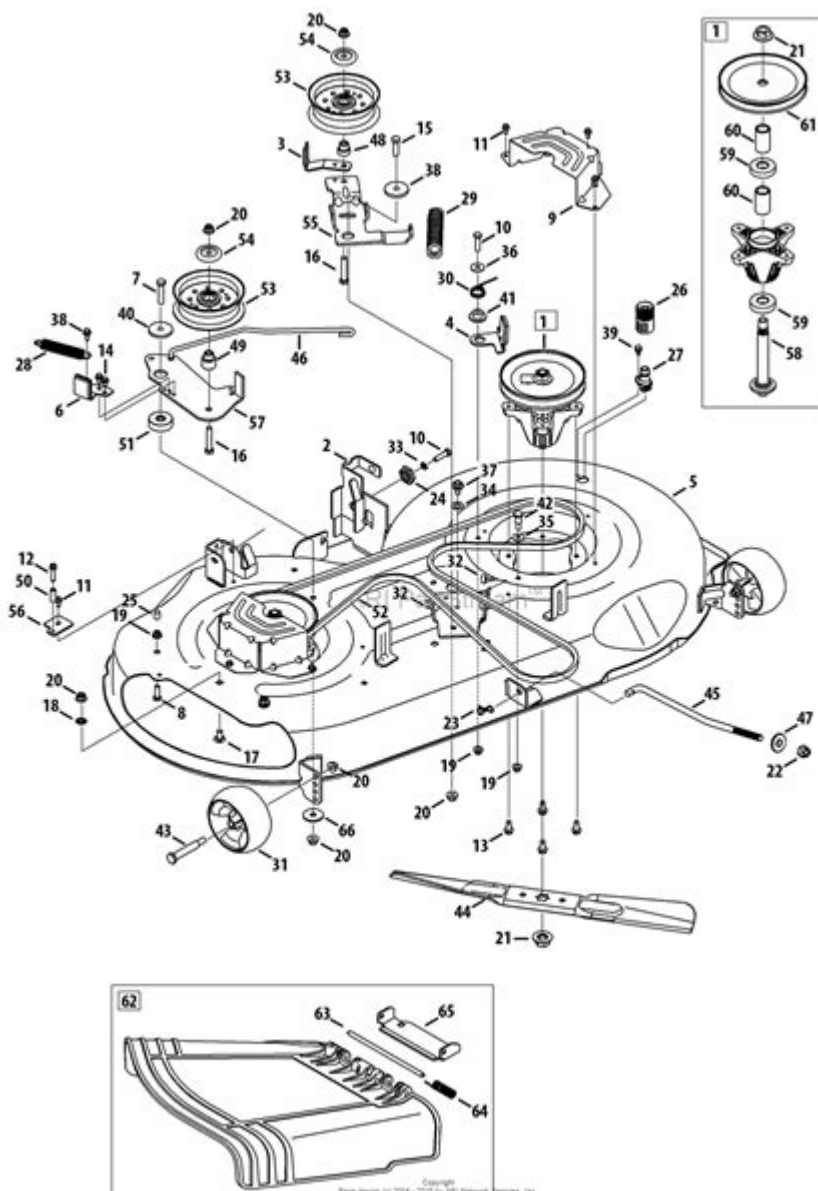


Craftsman 42 Mower Deck Parts Diagram



Craftsman 42 Mower Deck Parts Diagram

When it comes to maintaining your lawn mower, understanding its components is crucial. The Craftsman 42 mower deck is one of the most popular models, known for its efficiency and durability. This article will explore the various parts of the Craftsman 42 mower deck, providing a detailed diagram and descriptions of each component. Whether you're looking to replace a worn-out part or simply want to familiarize yourself with your equipment, this guide serves as an invaluable resource.

Understanding the Mower Deck

The mower deck is a critical component of any lawn mower, as it houses the blades and facilitates cutting the grass. The Craftsman 42 mower deck is designed to provide a clean and even cut,

making it an essential tool for maintaining a well-kept lawn. This deck includes several parts, each playing a specific role in the mower's performance.

Key Functions of the Mower Deck

1. Housing for Blades: The mower deck contains the blades that do the actual cutting of the grass.
2. Grass Discharge: The design of the deck allows for efficient grass discharge, either to the side or into a bag.
3. Support Structure: It provides structural integrity and support for the mower's components, including the engine and transmission.

Parts of the Craftsman 42 Mower Deck

Understanding the parts of the Craftsman 42 mower deck is crucial for both maintenance and repair. Below is a detailed breakdown of the components, along with a diagram for visual reference.

Diagram Overview

![Craftsman 42 Mower Deck Parts Diagram](insert-image-url-here)

(Note: Replace the placeholder with the actual image URL of the parts diagram.)

Detailed Parts List

Below are some of the primary components you will find in the Craftsman 42 mower deck:

1. Mower Deck Shell: The outer structure that houses the entire mower deck.
2. Spindle Assembly: Holds the blades and allows them to rotate.
3. Blades: The sharp metal parts that cut the grass.
4. Blade Drive Belt: Connects the engine to the spindle assembly, allowing for blade rotation.
5. Deck Wheels: Provide stability and help adjust the cutting height.
6. Mulch Plug: A component that enables mulching by preventing grass from discharging out of the mower deck.
7. Belt Cover: Protects the blade drive belt from debris and damage.
8. Deck Lift Lever: Used to adjust the height of the mower deck for different cutting lengths.
9. Front and Rear Skirt: Helps guide grass into the discharge chute and protects the deck.
10. Discharge Chute: Directs the cut grass away from the mower.
11. Anti-Scalp Rollers: Prevents the mower deck from scalping the lawn in uneven terrain.

Maintenance Tips for Mower Deck Parts

To ensure the longevity and efficient performance of your Craftsman 42 mower deck, regular maintenance is essential. Here are some tips to help you maintain the various parts:

Routine Inspections

- Check Blades: Inspect the blades regularly for signs of wear or damage. Sharpen or replace them as necessary.
- Inspect Belts: Look for fraying or cracks in the blade drive belt and replace it if necessary.
- Clean the Deck: After each use, clean underneath the mower deck to prevent grass buildup, which can lead to rust and corrosion.

Seasonal Maintenance

1. End of Season: Clean the entire mower deck thoroughly, and consider applying a rust inhibitor.
2. Mid-Season: Check the height adjustment for the deck wheels and ensure they are functioning properly.

Common Problems and Solutions

Being aware of potential issues can help you troubleshoot problems effectively. Below are some common issues associated with the Craftsman 42 mower deck and suggested solutions.

Uneven Cutting

- Cause: Worn-out blades or improper deck height.
- Solution: Sharpen the blades and adjust the deck height.

Grass Buildup Under the Deck

- Cause: Lack of cleaning and maintenance.
- Solution: Regularly clean the deck after each mow to prevent buildup.

Vibration During Operation

- Cause: Loose or damaged blades.
- Solution: Tighten or replace the blades as needed.

Where to Find Replacement Parts

When it comes time to replace parts, knowing where to find them is essential. Here are some reliable sources for purchasing Craftsman 42 mower deck parts:

1. Official Craftsman Website: The first place to check for genuine parts.
2. Local Hardware Stores: Many local stores carry mower parts, including those for Craftsman models.
3. Online Retailers: Websites like Amazon, eBay, and specialized mower parts retailers often have extensive inventories.
4. Authorized Service Centers: These centers can provide original parts and professional installation services.

Conclusion

The Craftsman 42 mower deck is an integral part of your lawn care routine. Understanding the parts, their functions, and how to maintain them can save you time and money in the long run. Regular inspections and prompt repairs will ensure that your mower operates at peak performance, keeping your lawn looking its best. Whether you're a seasoned professional or a new homeowner, this comprehensive guide will help you get the most out of your Craftsman 42 mower deck. By being proactive and informed, you can enjoy a beautiful lawn season after season.

Frequently Asked Questions

What is a Craftsman 42 mower deck parts diagram used for?

The Craftsman 42 mower deck parts diagram is used to identify and understand the various components and parts of the mower deck, facilitating repairs and maintenance.

Where can I find a reliable Craftsman 42 mower deck parts diagram?

You can find a reliable Craftsman 42 mower deck parts diagram on the official Craftsman website, in the owner's manual, or through online retailers that sell Craftsman parts.

How do I interpret the parts diagram for my Craftsman 42 mower deck?

To interpret the parts diagram, match the part numbers and names listed on the diagram with the corresponding components on your mower deck to identify what you need for repairs or replacements.

Are there common issues that the Craftsman 42 mower deck parts diagram can help troubleshoot?

Yes, the parts diagram can help troubleshoot common issues like uneven cutting, deck vibrations, or noise by allowing you to check for worn or damaged components.

Can I use the Craftsman 42 mower deck parts diagram to order replacement parts?

Absolutely! You can use the parts diagram to identify the exact parts you need and then order them from authorized dealers or online parts suppliers.

Is the Craftsman 42 mower deck parts diagram applicable to all Craftsman mowers?

No, the Craftsman 42 mower deck parts diagram is specific to the 42-inch deck models. Always verify that you have the correct diagram for your mower model.

Find other PDF article:

<https://soc.up.edu.ph/08-print/files?ID=Mls96-4494&title=barrett-o-neill-elementary-differential-geometry-solutions.pdf>

Craftsman 42 Mower Deck Parts Diagram

[Home | CRAFTSMAN®](#)

Official website for CRAFTSMAN®. Explore power tools, outdoor equipment, hand tools, storage products and more.

[Find A Retailer | CRAFTSMAN](#)

Find a CRAFTSMAN® authorized provider near you and discover who sells CRAFTSMAN® tools online or in a retail store near you.

[Shop Parts | CRAFTSMAN](#)

Sometimes products wear down and need repair or maintenance. Fortunately, you have several options to fix your products with Craftsman Parts & Service.

Power Tools and Accessories | CRAFTSMAN

Browse high-performance power tools and accessories, including drivers, impacts, saws and more. Get the best quality for the job from Craftsman.

V20* 5.0AH Lithium Ion Battery | CRAFTSMAN

This V20* 5.0Ah Lithium Ion Battery is compatible with the CRAFTSMAN® V20* cordless power tool and outdoor tool lineup. The professional grade high performance cells provide improved ...

Home & Outdoor - Garden Tools, Mowers & More | CRAFTSMAN

When it comes to shaping up your yard, look no further than CRAFTSMAN® to find the right equipment for you. Browse cordless and gas tools at CRAFTSMAN®. Take on large lawns and ...

[Shop All Mowers | CRAFTSMAN](#)

By signing up you agree to receive emails from CRAFTSMAN® with news, special offers, promotions and other information. You can unsubscribe at any time. See our Privacy Policy or ...

Customer Support | CRAFTSMAN

Find out more information about CRAFTSMAN® tools, warranty, parts, service, and more with our customer support resources.

[42 in. Gas Zero-Turn Riding Mower \(Z3200\) | CRAFTSMAN](#)

Transform your yard and mow up to 3 times faster than a walk behind*. The high-performance 42 in. Gas Zero-Turn Riding Mower (Z3200) features a powerful 547cc single-cylinder engine ...

[V20* System Cordless Power Tools | CRAFTSMAN](#)

Explore the CRAFTSMAN® V20* System of cordless power tools and products. The V20* System has the battery power, range and reliability to get your projects done.

[Home | CRAFTSMAN®](#)

Official website for CRAFTSMAN®. Explore power tools, outdoor equipment, hand tools, storage products and more.

[Find A Retailer | CRAFTSMAN](#)

Find a CRAFTSMAN® authorized provider near you and discover who sells CRAFTSMAN® tools online or in a retail store near you.

[Shop Parts | CRAFTSMAN](#)

Sometimes products wear down and need repair or maintenance. Fortunately, you have several options to fix your products with Craftsman Parts & Service.

[Power Tools and Accessories | CRAFTSMAN](#)

Browse high-performance power tools and accessories, including drivers, impacts, saws and more. Get the best quality for the job from Craftsman.

V20* 5.0AH Lithium Ion Battery | CRAFTSMAN

This V20* 5.0Ah Lithium Ion Battery is compatible with the CRAFTSMAN® V20* cordless power tool and outdoor tool lineup. The professional grade high performance cells provide improved ...

[Home & Outdoor - Garden Tools, Mowers & More | CRAFTSMAN](#)

When it comes to shaping up your yard, look no further than CRAFTSMAN® to find the right equipment for you. Browse cordless and gas tools at CRAFTSMAN®. Take on large lawns ...

Shop All Mowers | CRAFTSMAN

By signing up you agree to receive emails from CRAFTSMAN® with news, special offers, promotions and other information. You can unsubscribe at any time. See our Privacy Policy or ...

[Customer Support | CRAFTSMAN](#)

Find out more information about CRAFTSMAN® tools, warranty, parts, service, and more with our customer support resources.

42 in. Gas Zero-Turn Riding Mower (Z3200) | CRAFTSMAN

Transform your yard and mow up to 3 times faster than a walk behind*. The high-performance 42 in. Gas Zero-Turn Riding Mower (Z3200) features a powerful 547cc single-cylinder engine ...

V20 System Cordless Power Tools | CRAFTSMAN*

Explore the CRAFTSMAN® V20* System of cordless power tools and products. The V20* System has the battery power, range and reliability to get your projects done.

Explore our detailed Craftsman 42 mower deck parts diagram to identify and locate essential components. Learn more to keep your mower running smoothly!

[Back to Home](#)