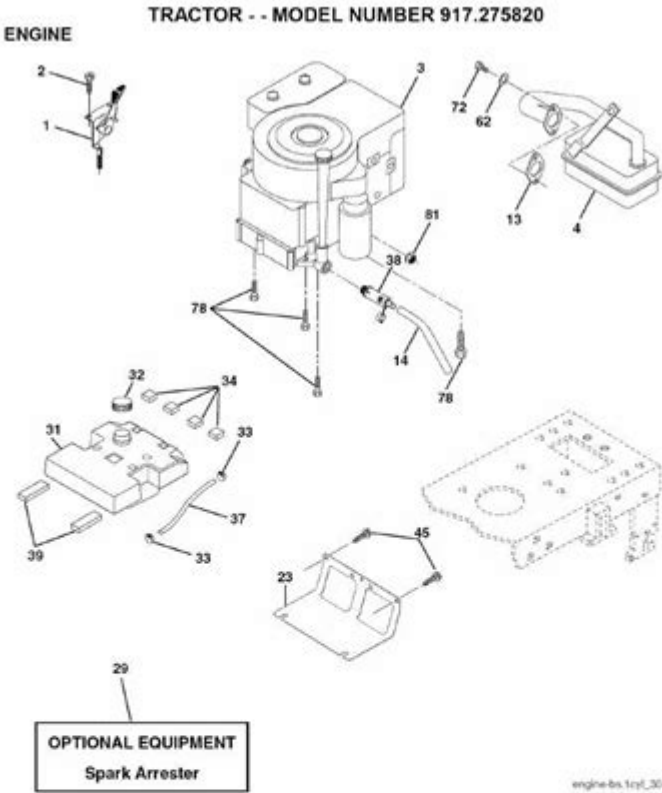


# Craftsman Dlt 3000 Parts Manual



KEY PART NO.	DESCRIPTION	KEY PART NO.	DESCRIPTION
1 170545	Control Throttle/Choke	38 181654	Plug, Drain Oil Easy
2 17720408	Screw Hex Thd Cut 1/4-20 x 5/8	39 109227X	Pad Idler 1.75 x .75 x .06
3 -----	Engine (See Breakdown) Briggs Model No. 31P777-0296-E1	44 17670412	Screw Hex Hex Thdrl 1/4-20 x 3/4
4 137352	Muffler Exhaust	45 17000612	Screw Hex Wsh Thdrl 3/8-16 x 3/4
13 165291	Gasket Muffler	46 19091416	Washer 9/32 x 7/8 x 16 Ga.
14 148456	Tube, Drain Oil Easy	62 10010500	Washer Split
23 169837	Shield Browning/Debris Guard	72 71070512	Screw Hex Head Cap 5/16-18 x 3/4
29 137180	Arrester Spark	78 17060620	Screw 3/8-16 x 1-1/4
31 157103	Tank Fuel	81 73510400	Nut, Keps 1/4-20 Starter Nut
32 161696	Cap Fuel		
33 123487X	Clamp Hose Bk		
34 105082X	Pad Spacer		
37 137040	Line Fuel		

NOTE: All component dimensions given in U.S. inches 1 inch = 25.4 mm

CRAFTSMAN DLT 3000 PARTS MANUAL IS AN ESSENTIAL RESOURCE FOR ANYONE WHO OWNS OR WORKS ON THE CRAFTSMAN DLT 3000 LAWN TRACTOR. THIS MANUAL PROVIDES DETAILED INFORMATION ABOUT THE VARIOUS COMPONENTS OF THE TRACTOR, INCLUDING PARTS IDENTIFICATION, ASSEMBLY INSTRUCTIONS, MAINTENANCE TIPS, AND TROUBLESHOOTING GUIDELINES. WHETHER YOU'RE A SEASONED MECHANIC OR A NOVICE DIY ENTHUSIAST, HAVING ACCESS TO THE CORRECT PARTS MANUAL CAN SIGNIFICANTLY ENHANCE YOUR ABILITY TO MAINTAIN AND REPAIR YOUR EQUIPMENT EFFECTIVELY.

## OVERVIEW OF THE CRAFTSMAN DLT 3000

THE CRAFTSMAN DLT 3000 IS A ROBUST LAWN TRACTOR DESIGNED FOR OPTIMAL PERFORMANCE IN RESIDENTIAL LAWN CARE. IT FEATURES A POWERFUL ENGINE, A RELIABLE TRANSMISSION, AND A USER-FRIENDLY DESIGN, MAKING IT A POPULAR CHOICE AMONG HOMEOWNERS. HOWEVER, LIKE ANY MACHINE, IT MAY REQUIRE REPAIRS AND MAINTENANCE OVER TIME. UNDERSTANDING THE PARTS OF YOUR CRAFTSMAN DLT 3000 IS CRUCIAL FOR ENSURING ITS LONGEVITY AND EFFICIENCY.

# IMPORTANCE OF THE PARTS MANUAL

THE CRAFTSMAN DLT 3000 PARTS MANUAL SERVES SEVERAL VITAL FUNCTIONS:

## 1. PARTS IDENTIFICATION

THE MANUAL PROVIDES A COMPREHENSIVE LIST OF PARTS, INCLUDING:

- ENGINE COMPONENTS
- TRANSMISSION PARTS
- CHASSIS AND FRAME
- ELECTRICAL SYSTEM
- CUTTING DECK

KNOWING THE CORRECT NAMES AND NUMBERS FOR EACH PART IS ESSENTIAL WHEN ORDERING REPLACEMENTS OR PERFORMING REPAIRS.

## 2. ASSEMBLY INSTRUCTIONS

AFTER DISASSEMBLING YOUR TRACTOR FOR MAINTENANCE OR REPAIR, THE PARTS MANUAL IS INDISPENSABLE FOR REASSEMBLY. IT INCLUDES STEP-BY-STEP INSTRUCTIONS THAT HELP ENSURE EVERYTHING IS PUT BACK TOGETHER CORRECTLY.

## 3. MAINTENANCE GUIDELINES

REGULAR MAINTENANCE IS KEY TO PROLONGING THE LIFE OF YOUR CRAFTSMAN DLT 3000. THE PARTS MANUAL OUTLINES:

- RECOMMENDED MAINTENANCE SCHEDULES
- LUBRICATION POINTS
- FILTER REPLACEMENTS
- INSPECTION PROCEDURES

THIS INFORMATION IS CRUCIAL FOR KEEPING YOUR LAWN TRACTOR FUNCTIONING OPTIMALLY.

## 4. TROUBLESHOOTING ASSISTANCE

IF YOUR CRAFTSMAN DLT 3000 EXPERIENCES ISSUES, THE PARTS MANUAL CAN HELP DIAGNOSE COMMON PROBLEMS. IT PROVIDES INSIGHTS INTO:

- ENGINE PERFORMANCE ISSUES

- TRANSMISSION TROUBLES
- ELECTRICAL FAILURES
- CUTTING DECK MALFUNCTIONS

IDENTIFYING THE PROBLEM EARLY CAN SAVE TIME AND MONEY ON REPAIRS.

## HOW TO OBTAIN THE CRAFTSMAN DLT 3000 PARTS MANUAL

THERE ARE SEVERAL WAYS TO OBTAIN A PARTS MANUAL FOR YOUR CRAFTSMAN DLT 3000:

### 1. ONLINE RESOURCES

MANY WEBSITES OFFER DOWNLOADABLE PDFs OF PARTS MANUALS. SOME RELIABLE SOURCES INCLUDE:

- THE OFFICIAL CRAFTSMAN WEBSITE
- ONLINE RETAILERS SPECIALIZING IN LAWN EQUIPMENT
- THIRD-PARTY MANUAL REPOSITORIES

SEARCH FOR "CRAFTSMAN DLT 3000 PARTS MANUAL PDF" TO FIND ACCESSIBLE OPTIONS.

### 2. LOCAL DEALERSHIPS

VISITING A LOCAL CRAFTSMAN DEALERSHIP CAN ALSO BE A GOOD WAY TO OBTAIN A PARTS MANUAL. DEALERSHIPS OFTEN HAVE PRINTED MANUALS AVAILABLE FOR PURCHASE OR MAY PROVIDE YOU WITH A COPY UPON REQUEST.

### 3. COMMUNITY FORUMS

MANY ONLINE FORUMS AND COMMUNITIES DEDICATED TO LAWN CARE AND OUTDOOR EQUIPMENT MAY HAVE SHARED RESOURCES. JOINING THESE PLATFORMS CAN PROVIDE YOU WITH INSIGHTS AND RECOMMENDATIONS ON WHERE TO FIND MANUALS.

## UNDERSTANDING KEY COMPONENTS OF THE CRAFTSMAN DLT 3000

TO MAKE THE MOST OF YOUR CRAFTSMAN DLT 3000 PARTS MANUAL, IT'S IMPORTANT TO UNDERSTAND THE KEY COMPONENTS OF THE TRACTOR. HERE'S A BREAKDOWN OF THE MAJOR PARTS AND THEIR FUNCTIONS:

### 1. ENGINE

THE ENGINE IS THE HEART OF YOUR LAWN TRACTOR. THE CRAFTSMAN DLT 3000 TYPICALLY FEATURES A RELIABLE ENGINE WITH A SPECIFIED HORSEPOWER RATING. KEY COMPONENTS TO NOTE INCLUDE:

- AIR FILTER
- FUEL FILTER
- OIL FILTER
- SPARK PLUG

REGULAR MAINTENANCE OF THESE COMPONENTS IS ESSENTIAL FOR OPTIMAL ENGINE PERFORMANCE.

## 2. TRANSMISSION

THE TRANSMISSION CONTROLS THE SPEED AND POWER DELIVERED TO THE WHEELS. THE DLT 3000 OFTEN HAS A HYDROSTATIC TRANSMISSION, WHICH OFFERS SMOOTH OPERATION. IMPORTANT PARTS INCLUDE:

- PULLEYS
- BELT
- DRIVE SHAFT

CHECK THE MANUAL FOR BELT REPLACEMENT INTERVALS AND TROUBLESHOOTING TIPS.

## 3. CUTTING DECK

THE CUTTING DECK IS RESPONSIBLE FOR MOWING YOUR LAWN. IT INCLUDES:

- BLADES
- DECK HOUSING
- SPINDLE ASSEMBLY

THE MANUAL PROVIDES INFORMATION ON BLADE SHARPENING AND REPLACEMENT PROCEDURES.

## 4. ELECTRICAL SYSTEM

THE ELECTRICAL SYSTEM POWERS THE LIGHTS, STARTER, AND OTHER COMPONENTS. KEY PARTS INCLUDE:

- BATTERY
- WIRING HARNESS
- IGNITION SWITCH

UNDERSTANDING THE ELECTRICAL LAYOUT CAN HELP IN TROUBLESHOOTING STARTING ISSUES.

# CONCLUSION

IN SUMMARY, THE **CRAFTSMAN DLT 3000 PARTS MANUAL** IS AN INVALUABLE RESOURCE FOR ANYONE LOOKING TO MAINTAIN, REPAIR, OR ENHANCE THEIR LAWN TRACTOR. WITH ITS DETAILED PARTS IDENTIFICATION, ASSEMBLY INSTRUCTIONS, MAINTENANCE GUIDELINES, AND TROUBLESHOOTING ASSISTANCE, THE MANUAL EMPOWERS USERS TO TAKE CONTROL OF THEIR TRACTOR'S UPKEEP. WHETHER ACCESSED ONLINE, THROUGH A DEALERSHIP, OR VIA COMMUNITY FORUMS, HAVING THIS MANUAL AT YOUR DISPOSAL WILL ENSURE YOUR CRAFTSMAN DLT 3000 REMAINS A RELIABLE TOOL FOR YOUR LAWN CARE NEEDS FOR YEARS TO COME.

## FREQUENTLY ASKED QUESTIONS

### WHAT IS THE CRAFTSMAN DLT 3000?

THE CRAFTSMAN DLT 3000 IS A LAWN TRACTOR KNOWN FOR ITS DURABILITY AND EFFICIENT PERFORMANCE IN YARD MAINTENANCE.

### WHERE CAN I FIND THE PARTS MANUAL FOR THE CRAFTSMAN DLT 3000?

THE PARTS MANUAL FOR THE CRAFTSMAN DLT 3000 CAN TYPICALLY BE FOUND ON THE OFFICIAL CRAFTSMAN WEBSITE, THROUGH AUTHORIZED DEALERS, OR IN DOWNLOADABLE PDF FORMAT ON VARIOUS ONLINE FORUMS.

### WHAT TYPES OF PARTS ARE INCLUDED IN THE CRAFTSMAN DLT 3000 PARTS MANUAL?

THE PARTS MANUAL INCLUDES INFORMATION ON ENGINE COMPONENTS, ELECTRICAL SYSTEMS, CUTTING DECKS, BELTS, AND OTHER ESSENTIAL PARTS FOR MAINTENANCE AND REPAIRS.

### HOW CAN I IDENTIFY THE CORRECT PART NUMBERS FROM THE CRAFTSMAN DLT 3000 PARTS MANUAL?

YOU CAN IDENTIFY PART NUMBERS BY LOCATING THE SPECIFIC SECTION RELATED TO THE COMPONENT YOU NEED, AS THE MANUAL ORGANIZES PARTS BY CATEGORY AND INCLUDES DIAGRAMS FOR CLARITY.

### IS THERE A DIGITAL VERSION OF THE CRAFTSMAN DLT 3000 PARTS MANUAL AVAILABLE?

YES, A DIGITAL VERSION OF THE CRAFTSMAN DLT 3000 PARTS MANUAL IS OFTEN AVAILABLE FOR DOWNLOAD ON THE CRAFTSMAN WEBSITE OR THROUGH VARIOUS ONLINE REPAIR RESOURCE SITES.

### CAN I USE THE CRAFTSMAN DLT 3000 PARTS MANUAL FOR TROUBLESHOOTING?

YES, THE PARTS MANUAL CAN BE USEFUL FOR TROUBLESHOOTING AS IT PROVIDES DIAGRAMS AND DESCRIPTIONS OF COMPONENTS, HELPING YOU IDENTIFY ISSUES AND THEIR SOLUTIONS.

### ARE REPLACEMENT PARTS FOR THE CRAFTSMAN DLT 3000 READILY AVAILABLE?

YES, REPLACEMENT PARTS FOR THE CRAFTSMAN DLT 3000 ARE GENERALLY AVAILABLE THROUGH THE CRAFTSMAN WEBSITE, AUTHORIZED DEALERS, AND ONLINE RETAILERS.

### WHAT SHOULD I DO IF I CAN'T FIND A SPECIFIC PART IN THE CRAFTSMAN DLT 3000 PARTS MANUAL?

IF YOU CAN'T FIND A SPECIFIC PART IN THE MANUAL, CONSIDER CONTACTING CRAFTSMAN CUSTOMER SERVICE OR VISITING A

LOCAL DEALER FOR ASSISTANCE.

## HOW OFTEN SHOULD I REFER TO THE CRAFTSMAN DLT 3000 PARTS MANUAL FOR MAINTENANCE?

IT'S ADVISABLE TO REFER TO THE CRAFTSMAN DLT 3000 PARTS MANUAL REGULARLY, ESPECIALLY BEFORE PERFORMING MAINTENANCE TASKS OR REPAIRS, TO ENSURE PROPER PROCEDURES AND PART IDENTIFICATION.

Find other PDF article:

<https://soc.up.edu.ph/10-plan/pdf?docid=oaQ52-0809&title=boston-brain-science-video.pdf>

## Craftsman Dlt 3000 Parts Manual

*Home | CRAFTSMAN®*

Official website for CRAFTSMAN®. Explore power tools, outdoor equipment, hand tools, storage products and more.

*Find A Retailer | CRAFTSMAN*

Find a CRAFTSMAN® authorized provider near you and discover who sells CRAFTSMAN® tools online or in a retail store near you.

Shop Parts | CRAFTSMAN

Sometimes products wear down and need repair or maintenance. Fortunately, you have several options to fix your products with Craftsman Parts & Service.

### **Power Tools and Accessories | CRAFTSMAN**

Browse high-performance power tools and accessories, including drivers, impacts, saws and more. Get the best quality for the job ...

*V20\* 5.0AH Lithium Ion Battery | CRAFTSMAN*

This V20\* 5.0Ah Lithium Ion Battery is compatible with the CRAFTSMAN® V20\* cordless power tool and outdoor tool lineup. The professional grade high performance ...

*Home | CRAFTSMAN®*

Official website for CRAFTSMAN®. Explore power tools, outdoor equipment, hand tools, storage products and more.

Find A Retailer | CRAFTSMAN

Find a CRAFTSMAN® authorized provider near you and discover who sells CRAFTSMAN® tools online or in a retail store near you.

### **Shop Parts | CRAFTSMAN**

Sometimes products wear down and need repair or maintenance. Fortunately, you have several options to fix your products with Craftsman Parts & Service.

*Power Tools and Accessories | CRAFTSMAN*

Browse high-performance power tools and accessories, including drivers, impacts, saws and more. Get the best quality for the job from Craftsman.

#### V20\* 5.0AH Lithium Ion Battery | CRAFTSMAN

This V20\* 5.0Ah Lithium Ion Battery is compatible with the CRAFTSMAN® V20\* cordless power tool and outdoor tool lineup. The professional grade high performance cells provide improved power and a longer cycle life.

#### **Home & Outdoor - Garden Tools, Mowers & More | CRAFTSMAN**

When it comes to shaping up your yard, look no further than CRAFTSMAN® to find the right equipment for you. Browse cordless and gas tools at CRAFTSMAN®. Take on large lawns and rough terrain with CRAFTSMAN® riding lawn mowers designed to ...

#### *Shop All Mowers | CRAFTSMAN*

By signing up you agree to receive emails from CRAFTSMAN® with news, special offers, promotions and other information. You can unsubscribe at any time. See our Privacy Policy or ...

#### Customer Support | CRAFTSMAN

Find out more information about CRAFTSMAN® tools, warranty, parts, service, and more with our customer support resources.

#### 42 in. Gas Zero-Turn Riding Mower (Z3200) | CRAFTSMAN

Transform your yard and mow up to 3 times faster than a walk behind\*. The high-performance 42 in. Gas Zero-Turn Riding Mower (Z3200) features a powerful 547cc single-cylinder engine designed for consistent mowing performance in thick, wet, heavy grass. Ideal for yards up to 2 acres, the 42 in. steel deck, robust steel frame, and dual hydrostatic transmissions offer ...

#### **V20\* System Cordless Power Tools | CRAFTSMAN**

Explore the CRAFTSMAN® V20\* System of cordless power tools and products. The V20\* System has the battery power, range and reliability to get your projects done.

Find the complete Craftsman DLT 3000 parts manual for easy repairs and maintenance. Ensure your mower runs smoothly. Learn more for expert tips and guidance!

[Back to Home](#)