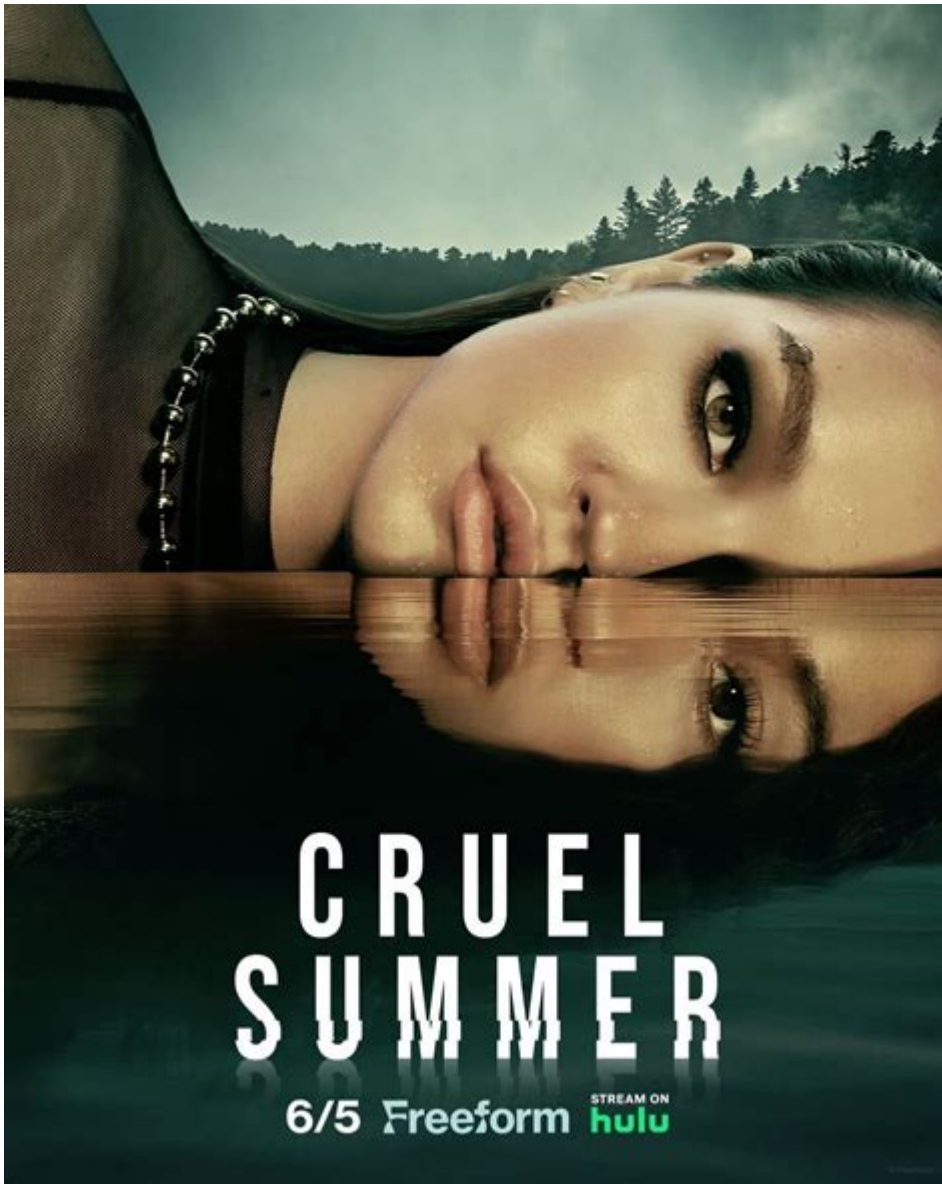


Cruel Summer Season 2 Parents Guide



Cruel Summer Season 2 Parents Guide is an essential resource for parents who want to navigate the complex themes and content of this popular series. As the show delves deeper into the lives of its teenage characters, it raises important questions about relationships, mental health, and personal growth. This article will provide an in-depth look at what parents should know before allowing their teens to watch the second season of "Cruel Summer," including content warnings, themes, and discussion points.

Overview of Cruel Summer Season 2

"Cruel Summer" is a psychological thriller and mystery series that first premiered in 2021. The show quickly gained a dedicated fanbase due to its engaging storytelling, complex characters, and the exploration of dark themes. Season 2 continues to follow the lives of its main characters in the backdrop of a summer that changes everything.

The narrative structure typically jumps between different timelines, allowing viewers to piece together the puzzle of the characters' lives. This season introduces new characters and expands on existing storylines, making it crucial for parents to understand the content before their children watch it.

Content Warnings

When considering whether "Cruel Summer Season 2" is appropriate for younger viewers, parents should be aware of various content warnings that pertain to the series:

- **Language:** The show contains strong language, which may not be suitable for younger audiences.
- **Violence:** There are instances of physical conflict and threats, which could be distressing.
- **Substance Use:** Characters may be depicted using alcohol or drugs, raising issues of peer pressure and addiction.
- **Mental Health Issues:** The show explores themes of trauma, anxiety, and depression, which may resonate with teens but can also be triggering.
- **Relationships:** The series delves into complex relationship dynamics, including manipulative and toxic behaviors.

Themes Explored in Season 2

Understanding the themes presented in "Cruel Summer Season 2" can help parents facilitate meaningful conversations with their teens. The following are some of the prominent themes in this season:

1. Identity and Self-Discovery

As the characters navigate their tumultuous teenage years, they confront questions about who they are and what they want to become. This theme is especially relatable for adolescents who are also figuring out their identities.

2. Friendship and Betrayal

Friendships are tested throughout the season, leading to feelings of betrayal and loyalty. These dynamics can provide an opportunity for parents to discuss the importance of healthy friendships and how to navigate conflicts.

3. Mental Health

With the show tackling mental health issues such as anxiety and depression, parents can utilize this as a springboard for conversations about emotional well-being. It's important to emphasize that seeking help is a sign of strength.

4. The Impact of Secrets

Secrets play a significant role in the storyline, affecting relationships and personal growth. Discussing the consequences of keeping secrets can help teens understand the value of honesty and communication.

Character Development

Each character in "Cruel Summer" is multi-dimensional, and their development throughout the season reflects their struggles and triumphs. Here are a few key characters to watch:

- **Kate:** The protagonist whose journey through trauma and recovery will resonate with many viewers.
- **Jeanette:** Her character faces moral dilemmas that provoke discussions about right and wrong.
- **New Characters:** Season 2 introduces new characters who bring fresh dynamics to the existing relationships, allowing for a broader exploration of themes.

How to Discuss the Show with Your Teen

Having open conversations about the themes and content of "Cruel Summer Season 2" can enhance your teen's viewing experience. Here are some strategies:

1. **Set Boundaries:** Discuss what parts of the show you feel comfortable with and establish what is off-limits.
2. **Ask Questions:** Encourage your teen to share their thoughts on the characters' decisions and the consequences of their actions.
3. **Relate to Real Life:** Connect the themes of the show to real-life situations, helping your teen to apply what they learn from the series.
4. **Encourage Reflection:** After watching an episode, ask your teen how they felt about the

characters' choices and what they would do differently.

Conclusion

In summary, the **Cruel Summer Season 2 Parents Guide** is a vital tool for parents to assess the appropriateness of the show for their teens. By understanding the content, themes, and character dynamics, parents can facilitate discussions with their children that foster critical thinking and self-reflection. While "Cruel Summer" can provide entertainment, it also serves as a mirror to important life lessons that can resonate with young viewers. As always, maintaining an open line of communication with your teen about the media they consume is crucial for their emotional development and understanding of complex topics.

Frequently Asked Questions

What age group is 'Cruel Summer Season 2' appropriate for?

The show is generally recommended for viewers aged 14 and older due to its mature themes and content.

Are there any parental advisories for 'Cruel Summer Season 2'?

Yes, the series includes advisories for strong language, sexual content, and intense scenes that may not be suitable for younger viewers.

What themes are explored in 'Cruel Summer Season 2'?

The season explores themes of trauma, friendship, betrayal, and the complexities of teenage life.

Is there any violence in 'Cruel Summer Season 2'?

Yes, there are some scenes of violence that may be distressing to certain viewers, so parental discretion is advised.

How does 'Cruel Summer Season 2' compare to Season 1 in terms of content?

Season 2 delves deeper into darker themes and character development, with increased intensity in plotlines compared to Season 1.

Can parents watch 'Cruel Summer Season 2' with their teens?

While parents can watch together, they should be prepared for discussions about the mature content and themes presented in the show.

Are there any positive messages in 'Cruel Summer Season 2'?

Yes, the show addresses the importance of communication, consent, and the impact of trauma, which can lead to meaningful discussions.

What should parents look out for in 'Cruel Summer Season 2'?

Parents should be aware of scenes involving drug use, sexual relationships, and emotional distress among characters.

Is 'Cruel Summer Season 2' suitable for family viewing?

It is not typically suitable for family viewing due to its mature themes and content, making it best for older teens and adults.

Where can I find a detailed parents guide for 'Cruel Summer Season 2'?

Detailed parents guides can often be found on websites like Common Sense Media or IMDb, which provide insights into content warnings.

Find other PDF article:

<https://soc.up.edu.ph/54-tone/Book?docid=PBD13-7965&title=solar-load-calculation-worksheet.pdf>

Cruel Summer Season 2 Parents Guide

Taylor Swift Cruel Summer -

Taylor Swift Cruel Summer cruel summer mv ...

cruel, more cruel, most cruel ? | WordReference Forums

May 20, 2011 · I'm afraid I don't agree with Sharifa345 as, if you look the word 'cruel' up in the dictionary you won't find either 'more cruel' or 'most cruel'. this is in fact a common mistake. it's ...

do not be cruel with / to + object | WordReference Forums

Jun 14, 2007 · I agree with geostan, you would usually say "cruel to" rather than "cruel with". For example: "Don't be so cruel to the cat!" "He made nasty comments and was very cruel to her." I ...

crueller / more cruel - WordReference Forums

Dec 27, 2008 · Hola a todos, tengo una duda que no consigo aclarar, es sobre la forma comparativa de "cruel". Hasta ahora creía que era "crueller" pero he visto utilizar en varios ...

Brutal vs. cruel - WordReference Forums

Jul 2, 2018 · The competition is very "brutal" or "cruel". Only one tenth of candidates can enter this company through written and oral tests. Are they both correct? If so, which is better in this ...

Cruel/crueller/the cruellest? - WordReference Forums

Feb 3, 2010 · Hola a todos, tengo ciertas dudas acerca de la forma comparativa y superlativa del adjetivo "cruel", ya que en algunos sitios aparece "crueller, the...

2019 Cruel summer B?

Jul 11, 2023 · 2019 Cruel summer B? Mv,

How could anyone have been so cruel? | WordReference Forums

Jul 5, 2021 · In speech, you use how could in questions to emphasize that you feel strongly about something bad that has happened. (Could definition and meaning | Collins English Dictionary ...

harsh and cruel -

299 ...

Lover Cruel Summer ...

Lover Cruel Summer ...

Taylor Swift Cruel Summer -

Taylor Swift Cruel Summer ... 240

cruel, more cruel, most cruel ? | WordReference Forums

May 20, 2011 · I'm afraid I don't agree with Sharifa345 as, if you look the word 'cruel' up in the dictionary you won't find either 'more cruel' or 'most cruel'. this is in fact a common mistake. it's cruel, crueler, cruellest

do not be cruel with / to + object | WordReference Forums

Jun 14, 2007 · I agree with geostan, you would usually say "cruel to" rather than "cruel with". For example: "Don't be so cruel to the cat!" "He made nasty comments and was very cruel to her." I think that both "cruel to" and "cruel with" would be understood, but "cruel with" might sound a little strange in some circumstances.

crueller / more cruel - WordReference Forums

Dec 27, 2008 · Hola a todos, tengo una duda que no consigo aclarar, es sobre la forma comparativa de "cruel". Hasta ahora creía que era "crueller" pero he visto utilizar en varios sitios la forma compuesta "more cruel". ¿Son las dos formas correctas? Gracias por adelantado, y ...

Brutal vs. cruel - WordReference Forums

Jul 2, 2018 · The competition is very "brutal" or "cruel". Only one tenth of candidates can enter this company through written and oral tests. Are they both correct? If so, which is better in this situation? Thank you.

Cruel/crueller/the cruellest? - WordReference Forums

Feb 3, 2010 · Hola a todos, tengo ciertas dudas acerca de la forma comparativa y superlativa del adjetivo "cruel", ya que en algunos sitios aparece "crueller, the...

2019 Cruel summer B?

Jul 11, 2023 · 2019 Cruel summer B? Mv,

[Back to Home](#)