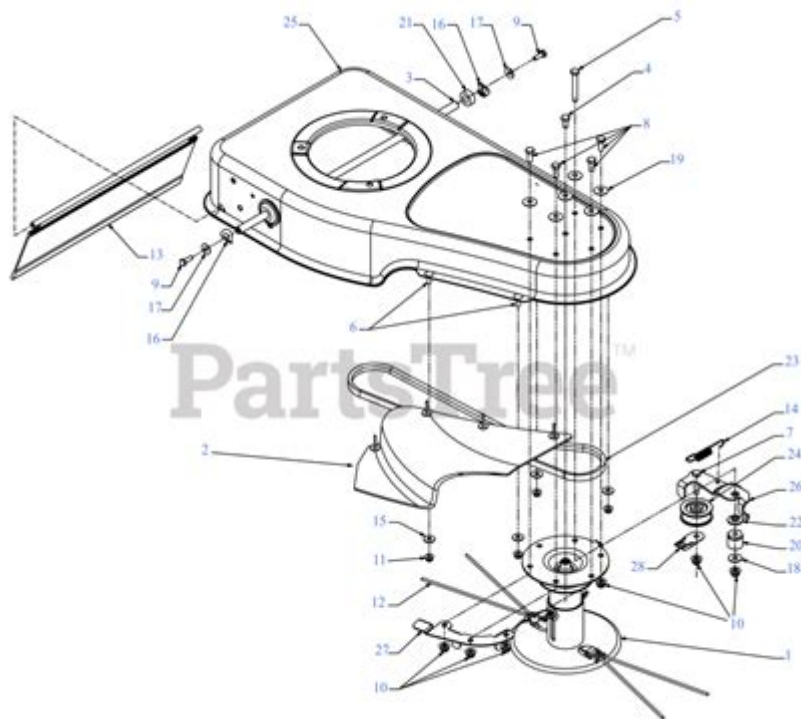


# Craftsman Walk Behind Trimmer Parts Diagram



Craftsman walk behind trimmer parts diagram is an essential resource for anyone looking to understand, maintain, or repair their trimmer. This handy tool is designed for both residential and commercial landscaping, providing an efficient way to keep your lawn and garden tidy. Knowing the various components of a walk-behind trimmer can assist users in troubleshooting issues, ordering replacement parts, and performing regular maintenance. In this article, we will explore the different parts of a Craftsman walk behind trimmer, their functions, and how to interpret the parts diagram to ensure your trimmer operates efficiently.

## Understanding the Craftsman Walk Behind Trimmer

Before diving into the specific parts, it's crucial to grasp what a walk-behind trimmer is and how it functions. A walk-behind trimmer is a machine that allows users to trim grass and weeds from a standing position, typically utilizing a rotating cutting head. These trimmers are powered by either gas or electric engines and are equipped with various safety features.

# Key Features of Craftsman Walk Behind Trimmers

- Cutting Width: The cutting width generally varies between models and affects how much area can be trimmed in one pass.
- Engine Type: Craftsman offers both gas-powered and electric options, catering to different user preferences.
- Height Adjustment: Many models allow users to adjust the height of the trimmer head for different cutting needs.
- Weight and Maneuverability: The weight of the trimmer affects ease of use. Lighter models may be easier to maneuver but might compromise on cutting power.

## Parts of the Craftsman Walk Behind Trimmer

A typical Craftsman walk-behind trimmer consists of numerous parts, each playing a vital role in its operation. Below is a breakdown of the key components.

### 1. Engine Components

- Engine: The heart of the trimmer, responsible for powering the cutting mechanism.
- Air Filter: Filters out dirt and debris before it enters the engine, essential for maintaining performance.
- Spark Plug: Ignites the fuel-air mixture, crucial for starting the engine.

### 2. Cutting Mechanism

- Cutting Head: The part of the trimmer that houses the cutting line or blade.
- Cutting Line: Nylon line that spins to cut grass and weeds. It can be replaced as it wears down.
- Blade: Some models may come with a metal blade instead of line for tougher vegetation.

### 3. Drive System

- Drive Shaft: Connects the engine to the cutting head, transferring power.
- Gearbox: Reduces the engine speed to an appropriate level for the cutting head.
- Clutch: Engages the cutting head with the engine, allowing it to start and stop smoothly.

## 4. Chassis and Frame

- Frame: The structural body of the trimmer, providing stability and support.
- Wheels: Allow for easy maneuverability; some models may have adjustable wheel heights.
- Handlebars: Provide control for the user; many are adjustable for comfort.

## 5. Safety Features

- Safety Switch: Prevents accidental starting of the engine.
- Guard: Shields the user from flying debris during operation.
- Kill Switch: Shuts off the engine in case of an emergency.

## 6. Fuel and Electrical System

- Fuel Tank: Holds gasoline for gas-powered models.
- Fuel Lines: Transport fuel from the tank to the engine.
- Battery (for electric models): Powers the motor and other functions.

## Interpreting the Parts Diagram

Understanding the Craftsman walk behind trimmer parts diagram can simplify maintenance and repairs. Here's how to interpret it effectively:

### 1. Familiarize Yourself with the Diagram

- Locate the Legend: Most diagrams have a legend or key that identifies each part with a corresponding number.
- Identify Major Sections: Look for sections that categorize parts by function (e.g., engine, cutting mechanism).

### 2. Cross-Reference with the User Manual

- Refer to the User Manual: The manual often includes the parts diagram and additional details about each component.

- Identify Replacement Parts: When looking for a specific part, the diagram will help you find the right one quickly.

### **3. Note the Assembly Order**

- Understand Assembly: The diagram may also provide insight into how parts fit together, which is useful during reassembly after repairs.
- Use Numbers for Reference: When ordering parts, reference the numbers in the diagram to ensure you're getting the correct components.

## **Regular Maintenance Tips**

Maintaining your Craftsman walk-behind trimmer is crucial for its longevity and performance. Here are some practical maintenance tips:

### **1. Clean the Air Filter**

- Frequency: Clean or replace the air filter every 25 hours of operation.
- Method: Remove the filter, tap it to remove dirt, or wash it if it's a washable type.

### **2. Check the Cutting Line/Blade**

- Inspection: Regularly inspect the cutting line or blade for wear.
- Replacement: Replace the line when it becomes too short or frayed. For blades, sharpen or replace as needed.

### **3. Change the Oil**

- Frequency: Change the engine oil regularly, usually every 50 hours of use.
- Procedure: Drain old oil, replace with new oil, and check the oil level with the dipstick.

## 4. Inspect the Spark Plug

- Check Condition: Inspect the spark plug regularly for carbon buildup.
- Replacement: Replace it if it's damaged or has excessive wear.

## 5. Store Properly

- Winter Storage: If storing for winter, drain fuel and run the engine until it stops to prevent gumming in the carburetor.
- Cover: Use a cover to protect the trimmer from dust and weather elements.

## Conclusion

The Craftsman walk behind trimmer parts diagram is a valuable tool for both novice and experienced users. Understanding the parts and their functions enables you to maintain your trimmer effectively, ensuring it runs smoothly for years to come. Regular maintenance, combined with knowledge of the parts and their assembly, will help you keep your lawn looking pristine. Whether you are troubleshooting, repairing, or simply performing routine checks, a thorough understanding of your trimmer's components will prove beneficial in achieving optimal performance. With this information at hand, you are well-equipped to tackle any maintenance or repair tasks associated with your Craftsman walk behind trimmer.

## Frequently Asked Questions

### **What is a craftsman walk behind trimmer parts diagram used for?**

A craftsman walk behind trimmer parts diagram is used to identify and locate the various components of the trimmer for maintenance and repair.

### **Where can I find a parts diagram for my Craftsman walk behind trimmer?**

You can find a parts diagram for your Craftsman walk behind trimmer on the official Craftsman website, in the user manual, or through online retailers that sell replacement parts.

### **How do I read a Craftsman walk behind trimmer parts diagram?**

To read a Craftsman walk behind trimmer parts diagram, look for labeled sections that correspond to

different components, ensuring to match the part numbers with the parts you need.

## **What are common parts included in a Craftsman walk behind trimmer parts diagram?**

Common parts include the engine, cutting head, trimmer line, wheels, handles, and various fasteners.

## **Can I use a parts diagram for troubleshooting my Craftsman walk behind trimmer?**

Yes, a parts diagram can help you troubleshoot issues by allowing you to identify which parts may be malfunctioning or need replacement.

## **Are there any online resources for downloading Craftsman walk behind trimmer parts diagrams?**

Yes, many online resources like the Craftsman website, repair forums, and parts suppliers offer downloadable parts diagrams.

## **What should I do if my Craftsman walk behind trimmer part is not listed in the diagram?**

If a part is not listed in the diagram, it may be a newer model or an aftermarket part; check with customer service or a parts distributor for assistance.

## **How often should I refer to the parts diagram for maintenance on my Craftsman trimmer?**

It's a good practice to refer to the parts diagram during routine maintenance checks or when you notice a performance issue to ensure all parts are functioning properly.

Find other PDF article:

<https://soc.up.edu.ph/07-post/pdf?trackid=Ewn18-7139&title=apple-crumble-recipe-james-martin.pdf>

## **[Craftsman Walk Behind Trimmer Parts Diagram](#)**

*Home* | CRAFTSMAN®

Official website for CRAFTSMAN®. Explore power tools, outdoor equipment, hand tools, storage products and more.

### [Find A Retailer | CRAFTSMAN](#)

Find a CRAFTSMAN® authorized provider near you and discover who sells CRAFTSMAN® tools online or in a retail store near you.

### [Shop Parts | CRAFTSMAN](#)

Sometimes products wear down and need repair or maintenance. Fortunately, you have several options to fix your products with Craftsman Parts & Service.

### **Power Tools and Accessories | CRAFTSMAN**

Browse high-performance power tools and accessories, including drivers, impacts, saws and more. Get the best quality for the job from Craftsman.

### [V20\\* 5.0AH Lithium Ion Battery | CRAFTSMAN](#)

This V20\* 5.0Ah Lithium Ion Battery is compatible with the CRAFTSMAN® V20\* cordless power tool and outdoor tool lineup. The professional grade high performance cells provide improved ...

### **Home & Outdoor - Garden Tools, Mowers & More | CRAFTSMAN**

When it comes to shaping up your yard, look no further than CRAFTSMAN® to find the right equipment for you. Browse cordless and gas tools at CRAFTSMAN®. Take on large lawns ...

### **Shop All Mowers | CRAFTSMAN**

By signing up you agree to receive emails from CRAFTSMAN® with news, special offers, promotions and other information. You can unsubscribe at any time. See our Privacy Policy or ...

### *Customer Support | CRAFTSMAN*

Find out more information about CRAFTSMAN® tools, warranty, parts, service, and more with our customer support resources.

### **42 in. Gas Zero-Turn Riding Mower (Z3200) | CRAFTSMAN**

Transform your yard and mow up to 3 times faster than a walk behind\*. The high-performance 42 in. Gas Zero-Turn Riding Mower (Z3200) features a powerful 547cc single-cylinder engine ...

### **V20\* System Cordless Power Tools | CRAFTSMAN**

Explore the CRAFTSMAN® V20\* System of cordless power tools and products. The V20\* System has the battery power, range and reliability to get your projects done.

### [Home | CRAFTSMAN®](#)

Official website for CRAFTSMAN®. Explore power tools, outdoor equipment, hand tools, storage products and more.

### [Find A Retailer | CRAFTSMAN](#)

Find a CRAFTSMAN® authorized provider near you and discover who sells CRAFTSMAN® tools online or in a retail store near you.

### *Shop Parts | CRAFTSMAN*

Sometimes products wear down and need repair or maintenance. Fortunately, you have several options to fix your products with Craftsman Parts & Service.

### [Power Tools and Accessories | CRAFTSMAN](#)

Browse high-performance power tools and accessories, including drivers, impacts, saws and more. Get the best quality for the job from Craftsman.

### V20\* 5.0AH Lithium Ion Battery | CRAFTSMAN

This V20\* 5.0Ah Lithium Ion Battery is compatible with the CRAFTSMAN® V20\* cordless power tool and outdoor tool lineup. The professional grade high performance cells provide improved ...

### Home & Outdoor - Garden Tools, Mowers & More | CRAFTSMAN

When it comes to shaping up your yard, look no further than CRAFTSMAN® to find the right equipment for you. Browse cordless and gas tools at CRAFTSMAN®. Take on large lawns ...

### **Shop All Mowers | CRAFTSMAN**

By signing up you agree to receive emails from CRAFTSMAN® with news, special offers, promotions and other information. You can unsubscribe at any time. See our Privacy Policy or ...

### Customer Support | CRAFTSMAN

Find out more information about CRAFTSMAN® tools, warranty, parts, service, and more with our customer support resources.

### 42 in. Gas Zero-Turn Riding Mower (Z3200) | CRAFTSMAN

Transform your yard and mow up to 3 times faster than a walk behind\*. The high-performance 42 in. Gas Zero-Turn Riding Mower (Z3200) features a powerful 547cc single-cylinder engine ...

### V20\* System Cordless Power Tools | CRAFTSMAN

Explore the CRAFTSMAN® V20\* System of cordless power tools and products. The V20\* System has the battery power, range and reliability to get your projects done.

Explore our detailed Craftsman walk behind trimmer parts diagram to help you identify components and make repairs. Learn more to keep your trimmer in top shape!

[Back to Home](#)