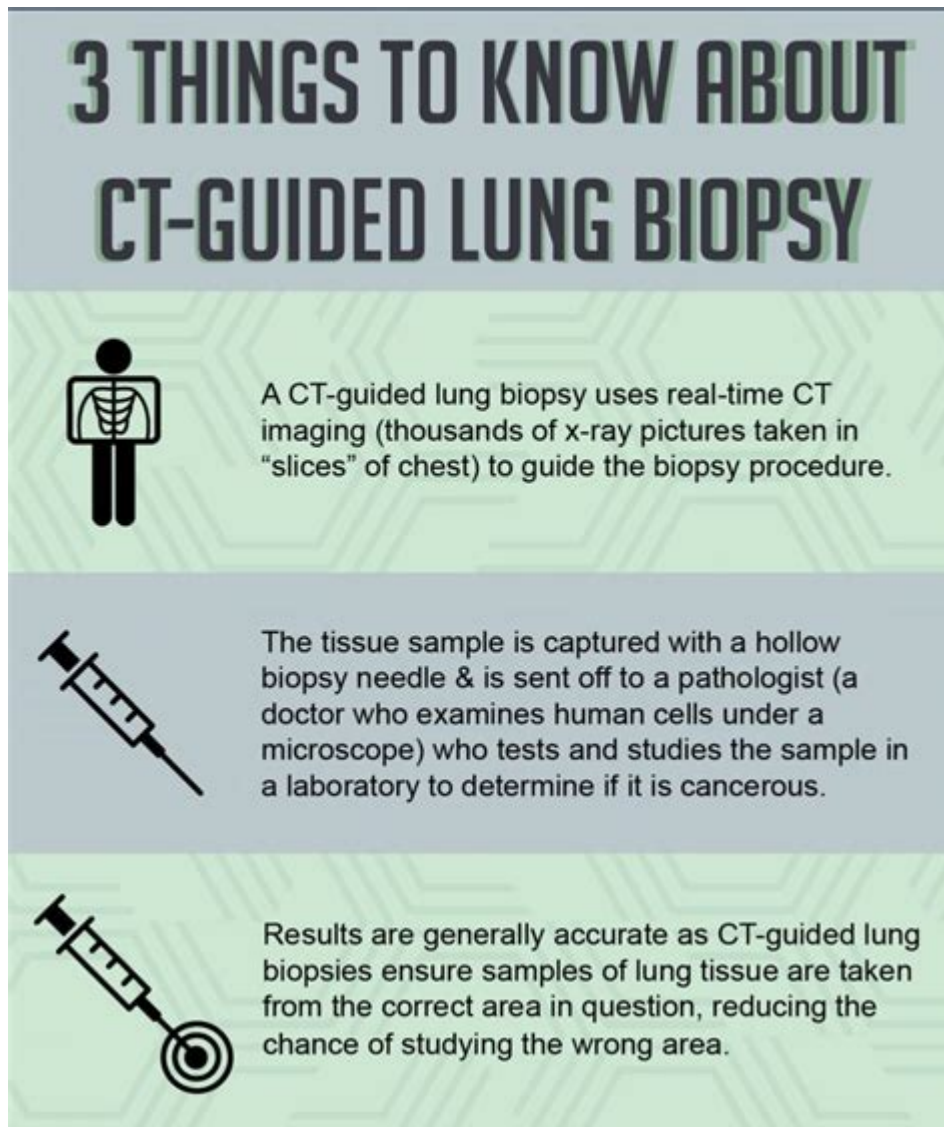


# Ct Guided Lung Biopsy Cpt Code 2023



**CT guided lung biopsy CPT code 2023** is an essential aspect of modern medical billing and coding, especially for healthcare professionals involved in pulmonary diagnostics. As the demand for precise diagnostic procedures increases, understanding the correct coding for CT-guided lung biopsies becomes paramount. This article will delve into the specifics of the CPT code for CT-guided lung biopsies, its importance, and its implications for medical billing practices in 2023.

## Understanding CT Guided Lung Biopsy

A CT guided lung biopsy is a minimally invasive procedure that allows healthcare providers to obtain tissue samples from the lungs for diagnostic purposes. This procedure is particularly useful for identifying lung cancer, infections, and other pulmonary conditions.

# How CT Guided Lung Biopsy Works

During a CT guided lung biopsy, imaging technology is utilized to accurately locate the area of interest within the lungs. The process typically involves several key steps:

1. **Patient Preparation:** The patient is positioned correctly, and a CT scan is performed to pinpoint the exact location of the mass or lesion.
2. **Local Anesthesia:** A local anesthetic is administered to minimize discomfort during the biopsy.
3. **Needle Insertion:** A thin needle is carefully guided into the lung tissue based on the CT images.
4. **Tissue Sample Collection:** Once the needle is in place, tissue samples are collected for laboratory analysis.
5. **Post-Procedure Care:** After the biopsy, patients are monitored for any complications.

## CPT Codes for CT Guided Lung Biopsy in 2023

CPT (Current Procedural Terminology) codes are crucial for billing and insurance purposes. They provide a standardized way to describe medical, surgical, and diagnostic services.

### Primary CPT Code for CT Guided Lung Biopsy

As of 2023, the primary CPT code used for CT guided lung biopsy procedures is 32553. This code specifically describes a percutaneous needle biopsy of the lung, including the imaging guidance necessary for the procedure.

### Additional Codes and Modifiers

In certain situations, additional codes or modifiers may need to be used in conjunction with the primary CPT code. This can include:

- 76942: This code is used when ultrasound guidance is employed during the biopsy.
- 76000: This code is applicable for fluoroscopic guidance if required.
- Modifier 26: This modifier indicates that the professional component of the service was provided separately.

# Importance of Accurate Coding

Correct coding is vital for several reasons, including:

- **Reimbursement:** Accurate coding ensures that healthcare providers are reimbursed correctly for the services rendered.
- **Compliance:** Adhering to coding guidelines helps prevent audits and potential penalties from insurance providers.
- **Data Tracking:** Proper coding allows for better tracking of healthcare trends and outcomes.

## Challenges in Coding for CT Guided Lung Biopsy

Despite its importance, coding for CT guided lung biopsies can present several challenges. These include:

### Complexity of Procedures

The technical nature of CT guided lung biopsies means that coders must have a comprehensive understanding of both the procedure and the relevant codes. Misunderstandings can lead to errors in coding, which can affect reimbursement and compliance.

### Variation in Practices

Different medical facilities may have variations in their procedures, leading to discrepancies in how biopsies are coded. It is crucial for coders to stay updated on facility-specific practices and ensure that coding accurately reflects the services provided.

## Best Practices for Coding CT Guided Lung Biopsy

To ensure accuracy in coding CT guided lung biopsies, healthcare providers and coders should consider the following best practices:

- **Stay Updated:** Regularly review updates from the American Medical Association (AMA) regarding CPT codes and guidelines.
- **Thorough Documentation:** Ensure that all aspects of the procedure are documented,

including imaging guidance and any additional services rendered.

- **Training and Education:** Invest in ongoing education for coding staff to enhance their understanding of procedural coding.
- **Utilize Coding Software:** Consider using specialized coding software that can assist in ensuring the correct codes are applied.

## Conclusion

In conclusion, understanding the CT guided lung biopsy CPT code 2023 is essential for healthcare providers and coders alike. Accurate coding not only facilitates proper reimbursement but also enhances compliance and data tracking within the healthcare system. By staying informed about coding practices, maintaining thorough documentation, and investing in ongoing education, healthcare professionals can improve the efficiency and accuracy of their coding practices. As the landscape of medical coding continues to evolve, staying abreast of changes will ensure that providers can navigate the complexities of billing for CT guided lung biopsies effectively.

## Frequently Asked Questions

### What is the CPT code for a CT-guided lung biopsy in 2023?

The CPT code for a CT-guided lung biopsy in 2023 is 32405.

### Are there any specific guidelines for coding a CT-guided lung biopsy?

Yes, it is important to follow the guidelines provided by the American Medical Association (AMA) and ensure the procedure is documented accurately to support the CPT code used.

### What types of lung biopsies can be performed using CT guidance?

CT guidance can be used for various types of lung biopsies, including fine needle aspiration (FNA) and core needle biopsies, to obtain tissue samples from lung lesions.

### Can the CPT code for a CT-guided lung biopsy be modified?

Yes, the CPT code may be modified with additional codes if other procedures, such as imaging or additional biopsies, are performed during the same session.

### What documentation is needed for billing a CT-guided lung

## biopsy?

Documentation should include the indications for the biopsy, the technique used, findings, and any complications that occurred during the procedure to support the billing process.

## Is prior authorization required for a CT-guided lung biopsy?

Prior authorization requirements vary by insurance provider; it's essential to check with the patient's insurance company to determine if it is necessary.

## What are common indications for performing a CT-guided lung biopsy?

Common indications include the evaluation of suspicious lung nodules or masses, diagnosis of lung cancer, and assessment of infections or other lung diseases.

Find other PDF article:

<https://soc.up.edu.ph/57-chart/files?ID=cMe31-3215&title=tc-helicon-play-acoustic-manual.pdf>

## Ct Guided Lung Biopsy Cpt Code 2023

MRCT \_

Dec 11, 2024 · CT "CT 400X200" 400 200 ...

CT -

CT computed tomography CT X CT ...

ct ...

2 ct ...

CT -

Oct 20, 2020 · CT CT 0.75mm ...

CT CE WE WC CC

Sep 22, 2023 · CT CE WE WC: CC

CT MRI

Jan 30, 2025 · CT MRI \*\*

**g[ct]lb[oz]gn[ozt]dwt**\_\_\_\_\_  
g[ct]lb[oz]gn[ozt]dwt g[gram] ct [carat] [karat] lb [pound]  
[oz] [ounce] ...

**CT CE WE WC CC**\_\_\_\_\_  
Aug 12, 2024 · 1. “CT” 2. “CE” 3.  
“WE” ...

**CT CE WE CC**\_\_\_\_\_  
Sep 15, 2024 · CT CE WE CC CT ...

**CT CT** -   
Nov 15, 2022 · CT 6 CT CT

**MR CT**\_\_\_\_\_  
Dec 11, 2024 · CT "CT 400X200" 400  
200

**CT** -   
CT computed tomography CT X CT

**ct** ...  
[ct] 2024-08-25 19:19

**CT** -   
Oct 20, 2020 · CT CT 0.75mm CT

**CT CE WE WC CC**  
Sep 22, 2023 · CT CE WE WC: CC

**CT MRI** ...  
Jan 30, 2025 · CT MRI \*\* “”

**g[ct]lb[oz]gn[ozt]dwt**\_\_\_\_\_  
g[ct]lb[oz]gn[ozt]dwt g[gram] ct [carat] [karat] lb [pound]  
[oz] [ounce] gn[grain] [ozt]ounce (s)troy [dwt] [discrete wavelet  
transform] ...

**CT CE WE WC CC**\_\_\_\_\_  
Aug 12, 2024 · 1. “CT” 2. “CE” 3.  
“WE” 4. “WC” 5. “CC” ...

**CT CE WE CC**\_\_\_\_\_  
Sep 15, 2024 · CT CE WE CC CT ...

□□□□CT□□□□CT□□□□ - □□

Nov 15, 2022 · CTCT6CTCTCTCTCT

Discover the latest CT guided lung biopsy CPT code for 2023. Stay informed on coding changes and best practices. Learn more to optimize your billing process!

[Back to Home](#)