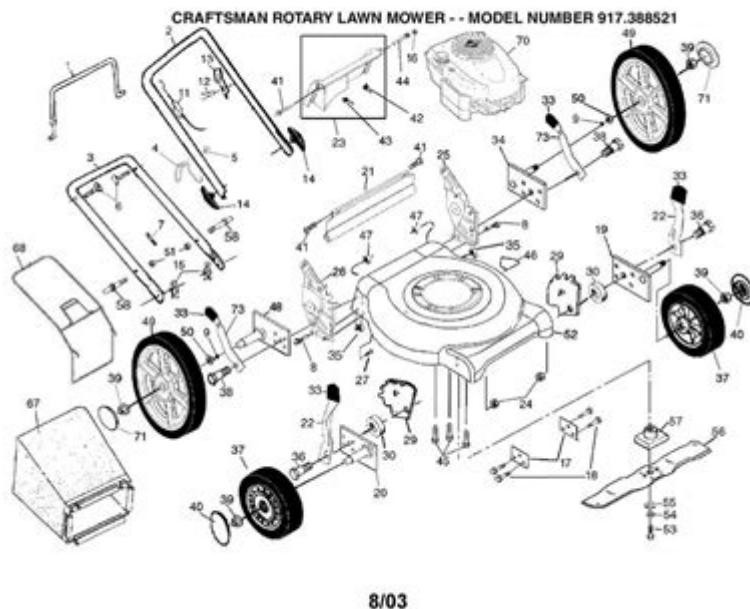


# Craftsman Push Lawn Mower Model 917 Parts Diagram



**Craftsman push lawn mower model 917 parts diagram** is an essential resource for anyone who owns this popular model. Understanding the parts diagram can simplify maintenance, repairs, and troubleshooting. Craftsman, a trusted name in outdoor power equipment, has designed the model 917 for durability and efficiency. In this article, we will explore the key components of the Craftsman push lawn mower model 917, the importance of the parts diagram, and how to effectively use it for maintenance and repair.

## Overview of Craftsman Push Lawn Mower Model 917

Craftsman push lawn mowers, particularly model 917, are renowned for their reliability and ease of use. These mowers are designed for homeowners looking for a straightforward solution to lawn care. With various features, including adjustable cutting heights and powerful engines, the 917 model caters to a wide range of mowing needs.

## Key Features of Model 917

- **Engine Performance:** The Craftsman 917 is equipped with a robust engine that delivers sufficient power for efficient mowing.
- **Cutting Width:** Typically, this model features a cutting width ranging from 21 to 22 inches, allowing for quicker mowing of medium to large lawns.
- **Adjustable Cutting Heights:** Users can adjust the cutting height to suit their preferences and grass

types.

- **Durable Construction:** Made with high-quality materials, this mower is built to withstand regular use.
- **Easy Maneuverability:** The design of the mower allows for easy navigation around obstacles in the yard.

## The Importance of the Parts Diagram

A parts diagram is a visual representation of the different components of a lawn mower. For model 917, this diagram is crucial for several reasons:

1. **Identification:** It helps users identify all parts of the mower, including those that may need replacement or repair.
2. **Maintenance:** Understanding the components can guide owners in performing regular maintenance tasks, such as oil changes, filter replacements, and blade sharpening.
3. **Troubleshooting:** If a problem arises, the parts diagram can assist in diagnosing the issue by pinpointing the affected area.
4. **Ordering Parts:** When a part needs to be replaced, the diagram allows users to accurately order the correct component.
5. **Assembly and Disassembly:** The diagram serves as a reference for assembling and disassembling the mower for repairs or storage.

## Components of the Craftsman Model 917 Parts Diagram

The parts diagram for the Craftsman push lawn mower model 917 includes various components. Here are some of the main parts you will find:

### 1. Engine Assembly

The engine assembly is the heart of the mower. It includes:

- **Engine Block:** Houses the internal components of the engine.
- **Air Filter:** Keeps debris out of the engine for optimal performance.
- **Spark Plug:** Ignites the fuel-air mixture for engine operation.

### 2. Cutting Deck

The cutting deck is responsible for housing the mower blades and cutting grass. Key elements include:

- **Mower Blades:** Sharp, rotating blades that cut grass.
- **Deck Housing:** Protects the blades and provides structural integrity.

- Height Adjustment Lever: Allows users to set the desired cutting height.

### **3. Wheels and Axles**

The wheels and axles enable movement and maneuverability:

- Front and Rear Wheels: Support the mower and facilitate movement.
- Axles: Connect the wheels to the mower and allow for rotation.

### **4. Handle Assembly**

The handle assembly provides control and steering:

- Handlebars: Allow users to push and steer the mower.
- Throttle Control: Regulates engine speed during operation.

### **5. Fuel System**

The fuel system supplies the engine with the necessary power:

- Fuel Tank: Holds the gasoline needed for operation.
- Fuel Lines: Transport fuel from the tank to the engine.

### **6. Safety Features**

Safety features are crucial for safe operation:

- Safety Switch: Prevents the mower from starting without proper handling.
- Blade Brake: Stops the blades quickly when the mower is disengaged.

## **How to Use the Parts Diagram for Maintenance**

Utilizing the parts diagram for maintenance can greatly enhance the longevity and performance of your Craftsman push lawn mower model 917. Here are some tips on how to effectively use the diagram:

### **1. Regular Inspections**

Conduct routine inspections of your mower using the parts diagram as a guide. Look for any visible

wear or damage, especially in critical areas like the engine and cutting deck.

## 2. Maintenance Tasks

Follow these steps to perform basic maintenance:

- Check the Oil: Refer to the engine assembly section in the diagram to locate the oil fill and dipstick. Change the oil if it appears dark or dirty.
- Replace the Air Filter: Identify the air filter in the diagram and check for dirt and debris. Replace it if necessary to ensure proper airflow to the engine.
- Sharpen or Replace Blades: Use the cutting deck section to locate the blades. Regularly sharpening or replacing them will improve cutting efficiency.

## 3. Troubleshooting Common Issues

If your mower is not operating correctly, consult the diagram to identify potential problem areas:

- Engine Won't Start: Check the spark plug and fuel lines to ensure they are functioning properly.
- Uneven Cutting: Inspect the cutting deck and blades for damage or debris buildup.
- Excessive Vibration: Look for loose components or unbalanced blades in the parts diagram.

## 4. Ordering Replacement Parts

When you identify a part that needs replacement, use the parts diagram to find the correct part number. You can order parts through the Craftsman website or authorized dealers.

## Conclusion

Understanding the **Craftsman push lawn mower model 917 parts diagram** is fundamental for any owner looking to maintain and repair their mower effectively. By familiarizing yourself with the components and utilizing the diagram for routine inspections and troubleshooting, you can ensure that your lawn mower remains in top condition for many seasons to come. Regular maintenance not only prolongs the life of your mower but also enhances its performance, making lawn care a more enjoyable task. Whether you are conducting simple repairs or ordering replacement parts, the parts diagram serves as an invaluable tool in your lawn care arsenal.

## Frequently Asked Questions

**Where can I find the parts diagram for Craftsman push lawn**

## **mower model 917?**

You can find the parts diagram for Craftsman push lawn mower model 917 on the official Sears Parts Direct website or by searching for it on the manufacturer's website.

## **What are the common parts needed for Craftsman push lawn mower model 917?**

Common parts needed include the blade, air filter, spark plug, fuel filter, and wheels.

## **How do I identify the correct replacement parts for my Craftsman push lawn mower model 917?**

You can identify the correct replacement parts by checking the model number on your mower and referring to the parts diagram or owner's manual that corresponds to that model.

## **Is there a downloadable version of the parts diagram for Craftsman push lawn mower model 917?**

Yes, many websites, including Sears Parts Direct, offer downloadable PDF versions of the parts diagram for Craftsman push lawn mower model 917.

## **What should I do if I can't find the parts diagram for my Craftsman push lawn mower model 917?**

If you can't find the parts diagram, consider contacting Craftsman customer support or visiting a local repair shop for assistance.

## **Are there any online forums where I can discuss Craftsman push lawn mower model 917 parts?**

Yes, online forums like Reddit and lawn care enthusiast websites often have discussions about Craftsman lawn mower parts, including model 917.

## **Can I order parts directly from the parts diagram for Craftsman push lawn mower model 917?**

Yes, most parts diagrams include part numbers that you can use to order parts directly from retailers or the manufacturer's website.

## **What tools do I need for replacing parts on my Craftsman push lawn mower model 917?**

Common tools needed include a socket set, screwdrivers, pliers, and possibly a torque wrench for certain components.

## **How often should I replace the parts on my Craftsman push**

## **lawn mower model 917?**

It is recommended to check and potentially replace parts such as the air filter and spark plug annually, while blades should be sharpened or replaced as needed based on usage.

## **Where can I find customer reviews for Craftsman push lawn mower model 917 parts?**

Customer reviews for Craftsman push lawn mower model 917 parts can be found on retail websites like Amazon, Home Depot, and various lawn care forums.

Find other PDF article:

<https://soc.up.edu.ph/12-quote/files?ID=BcE66-0143&title=change-language-on-oral-b-io-6.pdf>

## **Craftsman Push Lawn Mower Model 917 Parts Diagram**

*Home | CRAFTSMAN®*

Official website for CRAFTSMAN®. Explore power tools, outdoor equipment, hand tools, storage products and more.

### **Find A Retailer | CRAFTSMAN**

Find a CRAFTSMAN® authorized provider near you and discover who sells CRAFTSMAN® tools online or in a retail store near you.

### **Shop Parts | CRAFTSMAN**

Sometimes products wear down and need repair or maintenance. Fortunately, you have several options to fix your products with Craftsman Parts & Service.

### **Power Tools and Accessories | CRAFTSMAN**

Browse high-performance power tools and accessories, including drivers, impacts, saws and more. Get the best quality for the job from Craftsman.

### **V20\* 5.0AH Lithium Ion Battery | CRAFTSMAN**

This V20\* 5.0Ah Lithium Ion Battery is compatible with the CRAFTSMAN® V20\* cordless power tool and outdoor tool lineup. The professional grade high performance cells provide improved ...

### **Home & Outdoor - Garden Tools, Mowers & More | CRAFTSMAN**

When it comes to shaping up your yard, look no further than CRAFTSMAN® to find the right equipment for you. Browse cordless and gas tools at CRAFTSMAN®. Take on large lawns ...

### ***Shop All Mowers | CRAFTSMAN***

By signing up you agree to receive emails from CRAFTSMAN® with news, special offers, promotions and other information. You can unsubscribe at any time. See our Privacy Policy or ...

### **Customer Support | CRAFTSMAN**

Find out more information about CRAFTSMAN® tools, warranty, parts, service, and more with our customer support resources.

### **42 in. Gas Zero-Turn Riding Mower (Z3200) | CRAFTSMAN**

Transform your yard and mow up to 3 times faster than a walk behind\*. The high-performance 42 in. Gas Zero-Turn Riding Mower (Z3200) features a powerful 547cc single-cylinder engine ...

### V20\* System Cordless Power Tools | CRAFTSMAN

Explore the CRAFTSMAN® V20\* System of cordless power tools and products. The V20\* System has the battery power, range and reliability to get your projects done.

### *Home | CRAFTSMAN®*

Official website for CRAFTSMAN®. Explore power tools, outdoor equipment, hand tools, storage products and more.

### *Find A Retailer | CRAFTSMAN*

Find a CRAFTSMAN® authorized provider near you and discover who sells CRAFTSMAN® tools online or in a retail store near you.

### *Shop Parts | CRAFTSMAN*

Sometimes products wear down and need repair or maintenance. Fortunately, you have several options to fix your products with Craftsman Parts & Service.

### **Power Tools and Accessories | CRAFTSMAN**

Browse high-performance power tools and accessories, including drivers, impacts, saws and more. Get the best quality for the job from Craftsman.

### *V20\* 5.0AH Lithium Ion Battery | CRAFTSMAN*

This V20\* 5.0Ah Lithium Ion Battery is compatible with the CRAFTSMAN® V20\* cordless power tool and outdoor tool lineup. The professional grade high performance cells provide improved ...

### *Home & Outdoor - Garden Tools, Mowers & More | CRAFTSMAN*

When it comes to shaping up your yard, look no further than CRAFTSMAN® to find the right equipment for you. Browse cordless and gas tools at CRAFTSMAN®. Take on large lawns ...

### **Shop All Mowers | CRAFTSMAN**

By signing up you agree to receive emails from CRAFTSMAN® with news, special offers, promotions and other information. You can unsubscribe at any time. See our Privacy Policy or ...

### *Customer Support | CRAFTSMAN*

Find out more information about CRAFTSMAN® tools, warranty, parts, service, and more with our customer support resources.

### *42 in. Gas Zero-Turn Riding Mower (Z3200) | CRAFTSMAN*

Transform your yard and mow up to 3 times faster than a walk behind\*. The high-performance 42 in. Gas Zero-Turn Riding Mower (Z3200) features a powerful 547cc single-cylinder engine ...

### *V20\* System Cordless Power Tools | CRAFTSMAN*

Explore the CRAFTSMAN® V20\* System of cordless power tools and products. The V20\* System has the battery power, range and reliability to get your projects done.

Explore the Craftsman push lawn mower model 917 parts diagram to easily identify and order the right components. Learn more to keep your mower running smoothly!

[Back to Home](#)