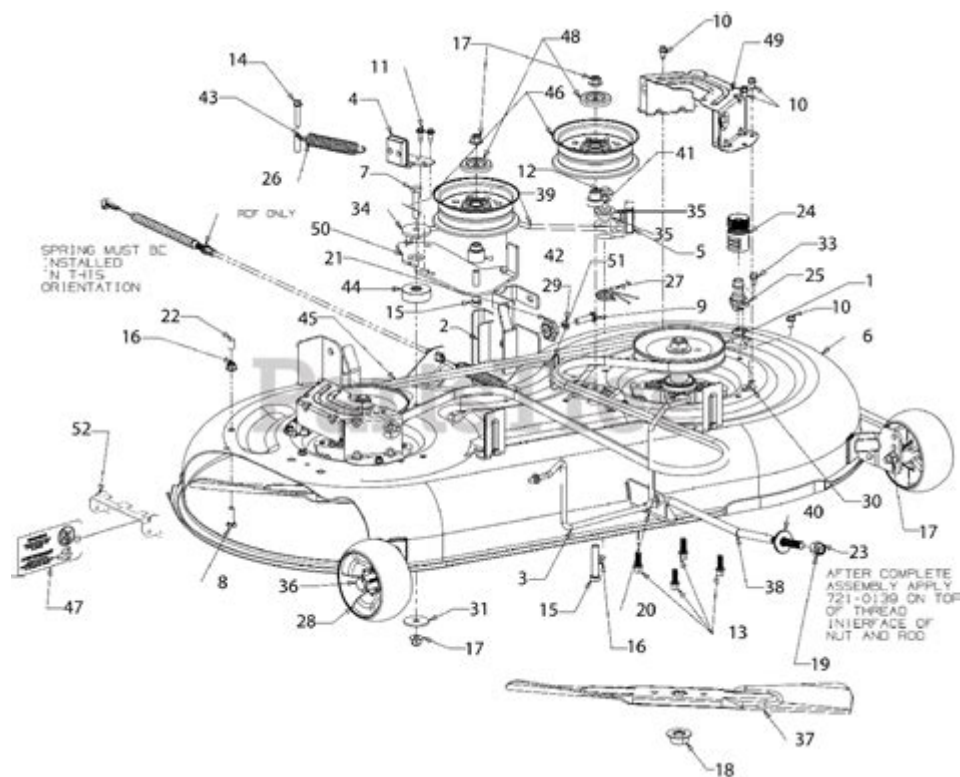


Craftsman Lawn Mower Parts Model 917 Manual



Craftsman lawn mower parts model 917 manual is an essential resource for anyone looking to maintain or repair their Craftsman lawn mower. Craftsman, a brand synonymous with durability and reliability, has produced a wide range of lawn mowers, and the model 917 series is particularly popular among homeowners. This article delves into the specifics of the Craftsman lawn mower parts model 917 manual, offering insights into its contents, the importance of each section, and how it can aid in the maintenance and repair of your mower.

Understanding the Craftsman Lawn Mower Parts Model 917 Manual

The Craftsman lawn mower parts model 917 manual serves as a comprehensive guide that outlines the specifications, parts, and maintenance procedures for the model 917 series. This manual is crucial for both seasoned mechanics and DIY enthusiasts, as it provides detailed information that can help in troubleshooting problems and ensuring optimal performance of the mower.

Key Components of the Manual

The manual is typically structured to include several key components:

- **Parts Lists:** Detailed illustrations and lists of parts specific to the model 917 mower, including part numbers and descriptions.
- **Assembly Instructions:** Step-by-step guidance on how to assemble or disassemble various parts of the mower.
- **Troubleshooting Guide:** A section dedicated to common issues, symptoms, and recommended solutions to help users diagnose problems quickly.
- **Maintenance Guidelines:** Recommendations for regular maintenance tasks, including oil changes, blade sharpening, and cleaning.
- **Safety Information:** Important safety precautions to follow while operating and servicing the mower.

The Importance of Each Section

Understanding the importance of each section in the Craftsman lawn mower parts model 917 manual can help you utilize it more effectively.

Parts Lists

The parts list is invaluable as it provides a detailed breakdown of every component in the mower. This section includes:

- Diagrams: Visual representations of the mower, allowing users to identify parts easily.
- Part Numbers: Each part is assigned a unique number, which is essential when ordering replacements.
- Descriptions: Brief descriptions of each part, helping users understand its function.

Assembly Instructions

The assembly instructions are crucial for those who may need to replace parts or reassemble their mower

after repairs. This section typically includes:

- **Step-by-Step Procedures:** Clear instructions to guide users through the assembly process without confusion.
- **Tools Required:** A list of tools needed for specific repairs or replacements, ensuring users are well-prepared.

Troubleshooting Guide

The troubleshooting guide is one of the most beneficial parts of the manual. It helps users identify and fix common problems they may encounter, such as:

- **Engine Won't Start:** Possible causes include fuel issues, spark plug problems, or battery failures.
- **Uneven Cutting:** Typically related to dull blades or improper cutting height settings.
- **Excessive Vibration:** Often a sign of loose or damaged parts.

By providing straightforward solutions, this section empowers users to address issues promptly, potentially saving time and repair costs.

Maintenance Guidelines

Regular maintenance is key to extending the life of a lawn mower. The maintenance guidelines section offers:

- **Routine Tasks:** Recommendations for tasks like oil changes, filter replacements, and blade sharpening.
- **Schedule:** Suggested timelines for when to perform these tasks, helping users stay organized and proactive.

By following these guidelines, users can ensure their mowers remain in peak condition, enhancing performance and efficiency.

Safety Information

Safety should always be a priority when operating and maintaining lawn mowers. The safety information section emphasizes:

- **Proper Use:** Guidelines on how to operate the mower safely to prevent accidents.
- **Protective Gear:** Recommendations for wearing appropriate clothing and gear, like gloves and safety

goggles.

- Emergency Procedures: Steps to take in case of an emergency, such as a fire or injury.

Where to Find the Craftsman Lawn Mower Parts Model 917 Manual

Finding the Craftsman lawn mower parts model 917 manual is easier than ever. Here are some sources:

- **Craftsman Official Website:** The official Craftsman website often provides downloadable manuals for various models.
- **Online Retailers:** Websites like Amazon and eBay may offer printed versions of the manual.
- **Local Hardware Stores:** Many local hardware or lawn equipment stores may have copies of the manual or can order one for you.
- **Forums and Community Groups:** Online forums and community groups dedicated to lawn care may also share digital copies or advice on where to find them.

Conclusion

The Craftsman lawn mower parts model 917 manual is a vital tool for any owner of this mower model. By understanding its structure and the importance of each section, users can effectively maintain their equipment, troubleshoot common problems, and ensure that their lawn mower operates efficiently for years to come. Whether you are a seasoned DIYer or a first-time mower owner, having access to this manual can significantly enhance your mowing experience.

Frequently Asked Questions

Where can I find the manual for Craftsman lawn mower model 917?

You can find the manual for Craftsman lawn mower model 917 on the official Craftsman website or by searching for it in online forums dedicated to lawn mower maintenance.

What are the common parts that may need replacement for Craftsman lawn mower model 917?

Common parts that may need replacement include the air filter, spark plug, blades, belts, and battery, depending on the mower's usage and age.

How do I identify the specific parts needed for my Craftsman lawn mower model 917?

You can identify specific parts by checking the model number on the mower and referencing the parts diagram in the manual or on the Craftsman parts website.

Is it possible to download a PDF version of the Craftsman lawn mower model 917 manual?

Yes, many users can download a PDF version of the manual from the Craftsman website or other online resources that archive user manuals.

What should I do if I can't find the parts for my Craftsman lawn mower model 917?

If you can't find the parts, consider contacting customer service at Craftsman, checking local hardware stores, or looking for compatible aftermarket parts.

Are there any online communities where I can discuss issues related to Craftsman lawn mower model 917?

Yes, there are several online forums and social media groups where lawn mower enthusiasts discuss issues, repairs, and parts related to Craftsman lawn mowers.

How often should I replace the spark plug in my Craftsman lawn mower model 917?

It is recommended to replace the spark plug every 100 hours of use or at least once a season to ensure optimal performance.

What type of oil should I use for my Craftsman lawn mower model 917?

You should use SAE 30 oil for warmer temperatures or 5W-30 oil for cooler temperatures, as indicated in the owner's manual.

Can I perform maintenance on my Craftsman lawn mower model 917 without the manual?

While it's possible to perform basic maintenance without the manual, having it is highly recommended to ensure you're following the correct procedures and guidelines.

Find other PDF article:

<https://soc.up.edu.ph/47-print/Book?dataid=IcM00-4264&title=political-frame-bolman-and-deal.pdf>

[Craftsman Lawn Mower Parts Model 917 Manual](#)

Home | CRAFTSMAN®

Official website for CRAFTSMAN®. Explore power tools, outdoor equipment, hand tools, storage products and more.

Find A Retailer | CRAFTSMAN

Find a CRAFTSMAN® authorized provider near you and discover who sells CRAFTSMAN® tools online or in a retail store near you.

Shop Parts | CRAFTSMAN

Sometimes products wear down and need repair or maintenance. Fortunately, you have several options to fix your products with Craftsman Parts & Service.

Power Tools and Accessories | CRAFTSMAN

Browse high-performance power tools and accessories, including drivers, impacts, saws and more. Get the best quality for the job from Craftsman.

V20* 5.0AH Lithium Ion Battery | CRAFTSMAN

This V20* 5.0Ah Lithium Ion Battery is compatible with the CRAFTSMAN® V20* cordless power tool and outdoor tool lineup. The professional grade high performance cells provide improved ...

Home & Outdoor - Garden Tools, Mowers & More | CRAFTSMAN

When it comes to shaping up your yard, look no further than CRAFTSMAN® to find the right equipment for you. Browse cordless and gas tools at CRAFTSMAN®. Take on large lawns ...

Shop All Mowers | CRAFTSMAN

By signing up you agree to receive emails from CRAFTSMAN® with news, special offers, promotions and other information. You can unsubscribe at any time. See our Privacy Policy or ...

Customer Support | CRAFTSMAN

Find out more information about CRAFTSMAN® tools, warranty, parts, service, and more with our customer support resources.

42 in. Gas Zero-Turn Riding Mower (Z3200) | CRAFTSMAN

Transform your yard and mow up to 3 times faster than a walk behind*. The high-performance 42 in. Gas Zero-Turn Riding Mower (Z3200) features a powerful 547cc single-cylinder engine ...

V20* System Cordless Power Tools | CRAFTSMAN

Explore the CRAFTSMAN® V20* System of cordless power tools and products. The V20* System has the battery power, range and reliability to get your projects done.

[Home | CRAFTSMAN®](#)

Official website for CRAFTSMAN®. Explore power tools, outdoor equipment, hand tools, storage products and more.

[Find A Retailer | CRAFTSMAN](#)

Find a CRAFTSMAN® authorized provider near you and discover who sells CRAFTSMAN® tools online or in a retail store near you.

Shop Parts | CRAFTSMAN

Sometimes products wear down and need repair or maintenance. Fortunately, you have several options to fix your products with Craftsman Parts & Service.

[Power Tools and Accessories | CRAFTSMAN](#)

Browse high-performance power tools and accessories, including drivers, impacts, saws and more. Get the best quality for the job from Craftsman.

V20* 5.0AH Lithium Ion Battery | CRAFTSMAN

This V20* 5.0Ah Lithium Ion Battery is compatible with the CRAFTSMAN® V20* cordless power tool and outdoor tool lineup. The professional grade high performance cells provide improved ...

[Home & Outdoor - Garden Tools, Mowers & More | CRAFTSMAN](#)

When it comes to shaping up your yard, look no further than CRAFTSMAN® to find the right equipment for you. Browse cordless and gas tools at CRAFTSMAN®. Take on large lawns and ...

[Shop All Mowers | CRAFTSMAN](#)

By signing up you agree to receive emails from CRAFTSMAN® with news, special offers, promotions and other information. You can unsubscribe at any time. See our Privacy Policy or ...

Customer Support | CRAFTSMAN

Find out more information about CRAFTSMAN® tools, warranty, parts, service, and more with our customer support resources.

[42 in. Gas Zero-Turn Riding Mower \(Z3200\) | CRAFTSMAN](#)

Transform your yard and mow up to 3 times faster than a walk behind*. The high-performance 42 in. Gas Zero-Turn Riding Mower (Z3200) features a powerful 547cc single-cylinder engine ...

[V20* System Cordless Power Tools | CRAFTSMAN](#)

Explore the CRAFTSMAN® V20* System of cordless power tools and products. The V20* System has the battery power, range and reliability to get your projects done.

Unlock the secrets to maintaining your Craftsman lawn mower with our comprehensive guide on Craftsman lawn mower parts model 917 manual. Learn more today!

[Back to Home](#)