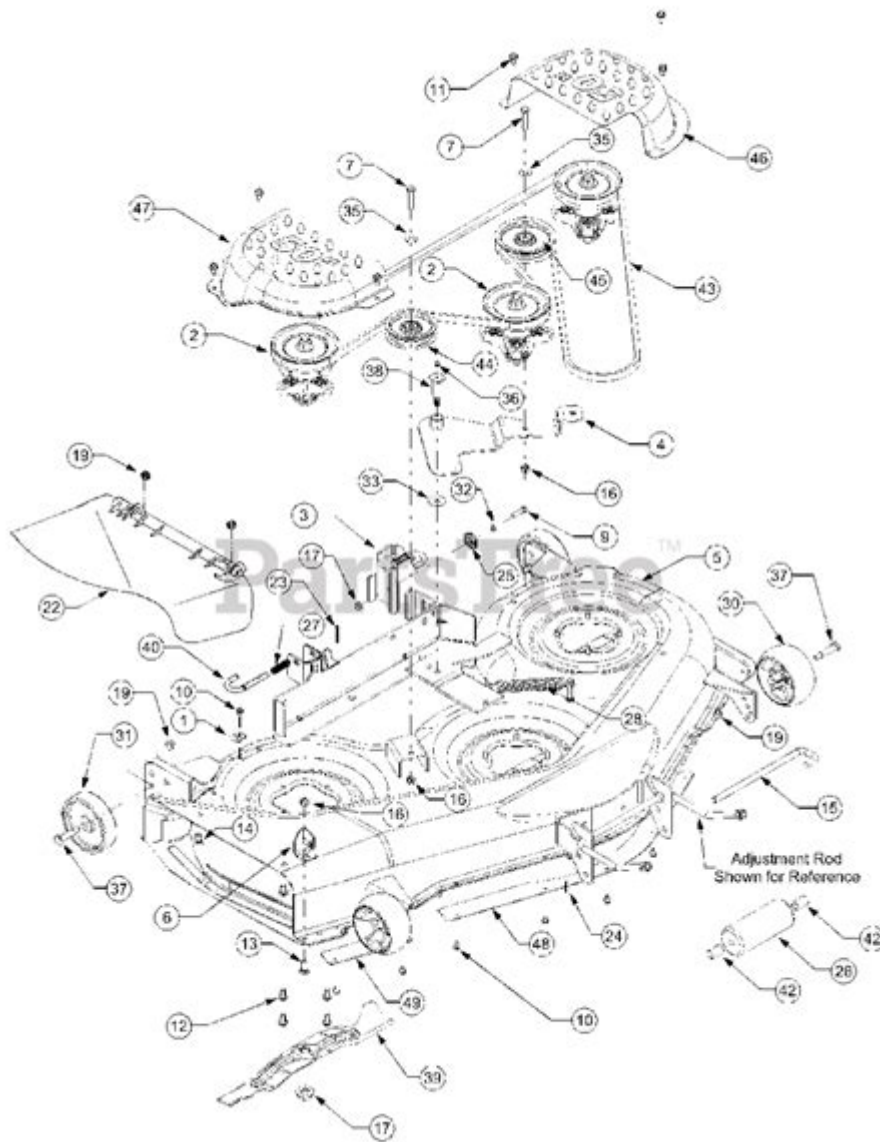


Cub Cadet 50 Inch Mower Deck Parts Diagram



Cub Cadet 50 inch mower deck parts diagram is an essential resource for anyone who owns or maintains a Cub Cadet lawn mower equipped with a 50-inch cutting deck. Understanding the parts of your mower deck is crucial for proper maintenance, repairs, and ensuring that your mower functions efficiently. In this article, we'll delve into the components of the Cub Cadet 50-inch mower deck, explore how to read the parts diagram, and provide tips for maintenance and repair.

Understanding the Cub Cadet 50 Inch Mower Deck

The mower deck is the primary component responsible for cutting grass. With a 50-inch width, this mower deck is designed for residential and commercial use, providing a balance of maneuverability and cutting efficiency. Knowing the parts of your mower deck can help you troubleshoot issues, perform regular maintenance, and replace worn components.

Components of the Cub Cadet 50 Inch Mower Deck

When examining the **Cub Cadet 50 inch mower deck parts diagram**, you will notice several key components. Each part plays a significant role in the mower's performance and longevity. Here's a breakdown of the main components:

1. Blades

The blades are the cutting edges of the mower deck. A Cub Cadet 50-inch mower typically has three blades arranged in a way that provides even cutting.

2. Spindles

Spindles hold the blades and allow them to rotate. They are essential for blade movement and require regular maintenance to prevent wear and tear.

3. Deck Shell

The deck shell is the outer casing that houses the blades and spindles. It protects the internal components and contributes to the aerodynamics of the mower.

4. Belt and Pulleys

The belt drives the blades, and the pulleys help guide the belt. Over time, belts can wear out, requiring inspection and possible replacement.

5. Anti-Scalp Wheels

These wheels prevent the deck from scalping the lawn, allowing for smoother cuts over uneven terrain.

6. Deck Hangers and Supports

These components support the mower deck and help maintain the correct cutting height. They are critical for the stability of the deck during operation.

7. Washers and Bolts

Various washers and bolts are used to secure the different components together. Proper fastening is essential for safe operation.

Reading the Parts Diagram

The **Cub Cadet 50 inch mower deck parts diagram** can initially seem overwhelming, but it is designed to help you identify each part. Here's how to effectively read the diagram:

- **Labels:** Each part is usually labeled with a number or letter. These correspond to a parts list, helping you identify specific components.
- **Connections:** The diagram often shows how parts connect to each other. Understanding these connections will help you during disassembly and reassembly.
- **Orientation:** The diagram often indicates the orientation of parts, ensuring that you install them correctly.

Maintenance Tips for the Cub Cadet 50 Inch Mower Deck

Proper maintenance of your mower deck is crucial for ensuring its longevity and performance. Here are some essential maintenance tips:

1. Regular Cleaning

Cleaning the mower deck after each use prevents grass buildup, which can lead to rust and damage. Use a scraper or a pressure washer to keep the deck clean.

2. Inspect the Blades

Regularly check the blades for dullness or damage. Sharpen or replace them as needed to maintain an even cut.

3. Check the Belts

Inspect the drive belts for wear, fraying, or cracking. Replace them if you notice any damage to prevent further issues.

4. Lubricate Moving Parts

Lubricate spindles and other moving parts to ensure smooth operation. Use a high-quality lubricant designed for lawn mower components.

5. Adjust the Cutting Height

Make sure the cutting height is adjusted according to your lawn's needs. This can prevent scalping and ensure a healthy lawn.

Common Issues and Solutions

Even with regular maintenance, issues can arise with your Cub Cadet 50-inch mower deck. Here are some common problems and their solutions:

1. Uneven Cutting

If your mower is leaving uneven patches, check the following:

- **Blades:** Ensure they are sharp and installed correctly.
- **Deck Level:** Adjust the height of the mower deck to ensure it's level.

2. Belt Slipping

If the belt is slipping, inspect for wear and ensure it is properly tensioned. Replace if necessary.

3. Noisy Operation

A noisy mower can indicate worn bearings or loose parts. Inspect the spindles and other components for wear.

4. Grass Buildup

If grass is accumulating under the deck, it may be a sign that the deck needs cleaning or that the anti-scalp wheels are not functioning correctly.

Where to Find Replacement Parts

Finding the right replacement parts for your Cub Cadet 50-inch mower deck is crucial for maintaining its performance. Here are some options:

- **Authorized Dealers:** Check with local Cub Cadet dealers for genuine parts.
- **Online Retailers:** Websites like Amazon, eBay, and specialized lawn care sites often have a wide range of parts.
- **Local Repair Shops:** Many repair shops carry common parts for lawn mowers, making them a good resource.

Conclusion

Understanding the **Cub Cadet 50 inch mower deck parts diagram** and components is vital for any mower owner. By familiarizing yourself with the parts, you can perform better maintenance, troubleshoot issues, and ensure your mower operates efficiently. Regular upkeep not only extends the life of your mower but also helps you achieve a beautifully manicured lawn. Whether you're a seasoned mower user or a beginner, having this knowledge will enhance your mowing experience.

Frequently Asked Questions

What are the key components shown in the Cub Cadet 50 inch mower deck parts diagram?

The key components typically include the deck shell, blades, spindle assemblies, belt, pulleys, and the anti-scalp wheels, among other parts.

Where can I find a detailed parts diagram for the Cub Cadet 50 inch mower deck?

A detailed parts diagram can usually be found in the owner's manual, on the official Cub Cadet website, or through authorized retailers that provide parts catalogs.

How do I interpret the part numbers from the Cub

Cadet 50 inch mower deck parts diagram?

Part numbers in the diagram are usually listed next to each component. You can use these numbers to order replacements through dealers or online parts suppliers.

What maintenance tasks can be performed using the parts diagram of the Cub Cadet 50 inch mower deck?

Maintenance tasks include blade replacement, belt adjustments, cleaning the deck, and inspecting spindle assemblies, all of which can be guided by the parts diagram.

Is it necessary to refer to the parts diagram when repairing a Cub Cadet 50 inch mower deck?

Yes, referring to the parts diagram is essential for identifying parts, understanding assembly, and ensuring correct installation during repairs.

Find other PDF article:
<https://soc.up.edu.ph/64-frame/Book?trackid=KUu46-7564&title=unit-periodic-trends-history-and-the-basics.pdf>

Cub Cadet 50 Inch Mower Deck Parts Diagram

cub -
Jul 13, 2024 · cub CUB 1. CUB ...

PSB CUB FAB SB OB ...
PSB CUB FAB SB OB PSB CUB FAB SB OB 7

HONDA Super Cub C125 ...
HONDA Super Cub C125 2019 11 Super Cub C125 1958
Super Cub C100 ...

NZQR ?
NZQR N (R Z Q Z* N* ...

HONDA X Hello Kitty SUPER CUB 110
Mar 11, 2025 · 2024 50 HELLO KITTY, HONDA 50
HELLO KITTY SUPER CUB 110 ; ...

cu a b = cua ^ cub ...

Mar 21, 2013 · 3 1 2 a 1 cua a

wland -

Sep 6, 2024 · wland Wland 1. **

cub -

cub CUB CENTER UTILITY BUILDING

OEM FOB SKD CKD

OEM FOB SKD CKD 1 OEM

cub (cub) _

Apr 20, 2024 · cub cub B B CuB U B A (CuB AU (CuB), A B ...

cub -

Jul 13, 2024 · cub CUB 1. CUB

PSB CUB FAB SB OB

PSB CUB FAB SB OB PSB CUB FAB SB OB

HONDA Super Cub C125 - Mobile01

HONDA Super Cub C125 2019 11 Super Cub C125 1958 ...

N Z Q R ? _

N Z Q R ? N (R Z Q Z* ...

HONDA X Hello Kitty SUPER CUB 110 - Mo...

Mar 11, 2025 · 2024 50 HELLO KITTY, HONDA 50 ...

Explore our comprehensive Cub Cadet 50 inch mower deck parts diagram. Find detailed information and essential parts to keep your mower running smoothly. Learn more!

[Back to Home](#)