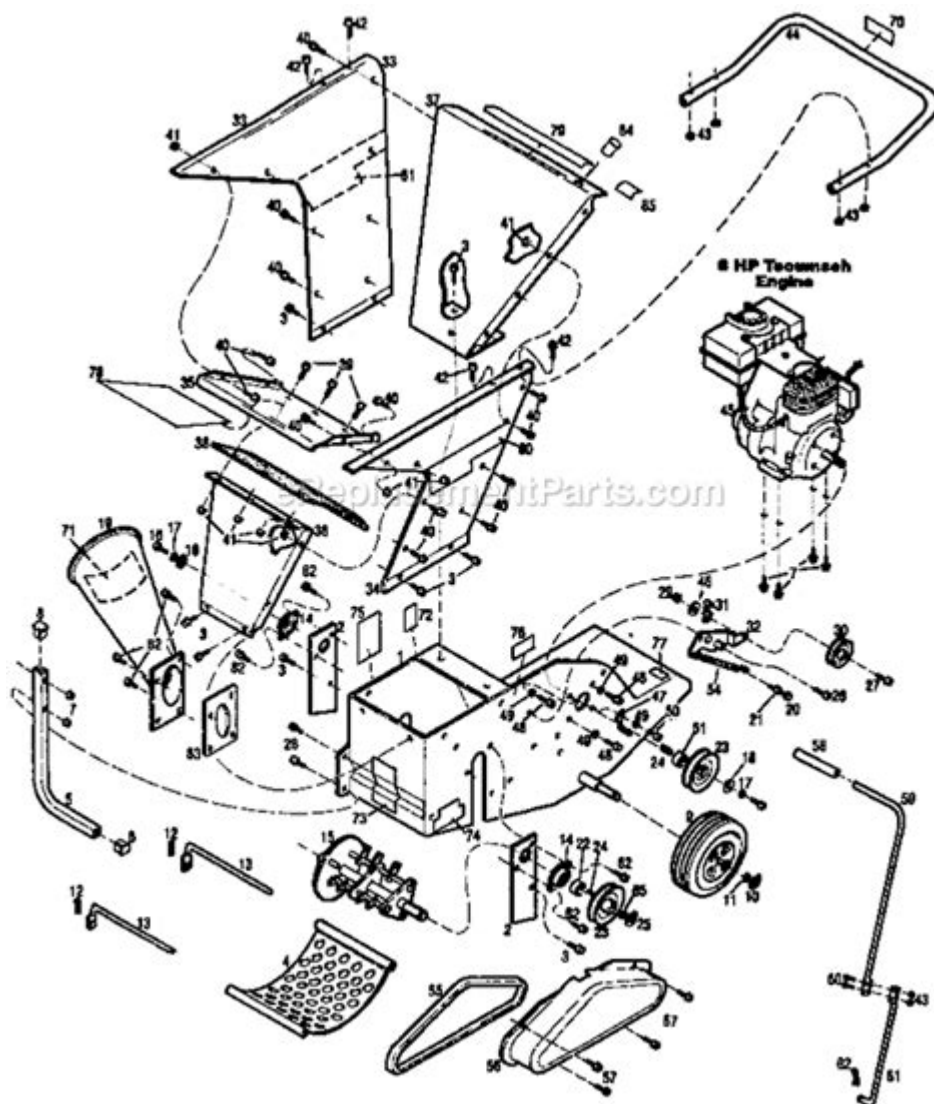


# Craftsman Eager 1 Manual



**CRAFTSMAN EAGER 1 MANUAL** IS AN ESSENTIAL GUIDE FOR OWNERS OF THE CRAFTSMAN EAGER 1 LAWN MOWER. THIS MANUAL NOT ONLY PROVIDES DETAILED INSTRUCTIONS ON HOW TO OPERATE THE MOWER BUT ALSO COVERS MAINTENANCE TIPS, TROUBLESHOOTING ADVICE, AND SAFETY PRECAUTIONS. IN THIS ARTICLE, WE WILL DELVE INTO THE KEY FEATURES OF THE CRAFTSMAN EAGER 1, THE IMPORTANCE OF THE MANUAL, AND HOW TO EFFECTIVELY USE AND MAINTAIN YOUR MOWER FOR OPTIMAL PERFORMANCE.

## OVERVIEW OF THE CRAFTSMAN EAGER 1

THE CRAFTSMAN EAGER 1 IS A RELIABLE AND USER-FRIENDLY LAWN MOWER DESIGNED FOR HOMEOWNERS WHO WANT TO KEEP THEIR LAWNS LOOKING PRISTINE. KNOWN FOR ITS DURABILITY AND EFFICIENCY, THIS MOWER IS SUITABLE FOR VARIOUS LAWN SIZES AND TYPES.

## KEY FEATURES

- **POWERFUL ENGINE:** THE CRAFTSMAN EAGER 1 IS EQUIPPED WITH A ROBUST ENGINE THAT PROVIDES AMPLE POWER FOR

CUTTING THROUGH TOUGH GRASS AND WEEDS.

- **ADJUSTABLE CUTTING HEIGHT:** USERS CAN EASILY ADJUST THE CUTTING HEIGHT TO SUIT THEIR LAWN'S NEEDS, ALLOWING FOR CUSTOMIZED MOWING OPTIONS.
- **LIGHTWEIGHT DESIGN:** ITS LIGHTWEIGHT CONSTRUCTION MAKES IT EASY TO MANEUVER, EVEN IN TIGHT SPACES.
- **ERGONOMIC HANDLE:** THE MOWER FEATURES AN ERGONOMIC HANDLE THAT REDUCES STRAIN DURING OPERATION AND PROVIDES BETTER CONTROL.
- **EASY START MECHANISM:** DESIGNED FOR SIMPLICITY, THE EAGER 1 TYPICALLY FEATURES AN EASY-START MECHANISM THAT ENSURES QUICK AND HASSLE-FREE STARTING.

## IMPORTANCE OF THE CRAFTSMAN EAGER 1 MANUAL

THE CRAFTSMAN EAGER 1 MANUAL IS AN INVALUABLE RESOURCE FOR BOTH NEW AND EXPERIENCED USERS. IT SERVES SEVERAL IMPORTANT PURPOSES:

### 1. OPERATION INSTRUCTIONS

THE MANUAL CONTAINS STEP-BY-STEP INSTRUCTIONS ON HOW TO OPERATE THE MOWER EFFECTIVELY. THIS INCLUDES DETAILS ON STARTING THE MOWER, ADJUSTING THE CUTTING HEIGHT, AND PROPER MOWING TECHNIQUES.

### 2. MAINTENANCE GUIDELINES

REGULAR MAINTENANCE IS CRITICAL FOR THE LONGEVITY OF YOUR MOWER. THE MANUAL PROVIDES COMPREHENSIVE MAINTENANCE SCHEDULES, INCLUDING:

- **OIL CHANGE RECOMMENDATIONS:** FREQUENCY AND TYPE OF OIL TO USE.
- **BLADE SHARPENING:** INSTRUCTIONS ON HOW AND WHEN TO SHARPEN THE MOWER BLADES.
- **AIR FILTER CLEANING:** GUIDELINES ON MAINTAINING THE AIR FILTER FOR OPTIMUM PERFORMANCE.

### 3. TROUBLESHOOTING TIPS

IF YOU ENCOUNTER ISSUES WHILE USING THE MOWER, THE MANUAL OFFERS TROUBLESHOOTING TIPS TO HELP IDENTIFY AND RESOLVE COMMON PROBLEMS. THIS INCLUDES:

- **STARTING ISSUES:** WHAT TO CHECK IF THE MOWER FAILS TO START.
- **UNEVEN CUTTING:** DIAGNOSING AND FIXING PROBLEMS RELATED TO UNEVEN GRASS CUTTING.
- **NOISE AND VIBRATION:** ADDRESSING EXCESSIVE NOISE OR VIBRATIONS DURING OPERATION.

### 4. SAFETY PRECAUTIONS

SAFETY IS PARAMOUNT WHEN OPERATING ANY MACHINERY. THE MANUAL OUTLINES IMPORTANT SAFETY PRECAUTIONS TO FOLLOW, SUCH AS:

- **WEARING APPROPRIATE CLOTHING AND FOOTWEAR.**
- **UNDERSTANDING THE MOWER'S CONTROLS.**
- **KEEPING CHILDREN AND PETS AWAY FROM THE MOWING AREA.**

# How to Use the Craftsman Eager 1 Lawn Mower

Using the Craftsman Eager 1 lawn mower is straightforward, but following the instructions in the manual will ensure a smooth mowing experience. Here's a simple guide to get you started:

## Step-by-Step Guide

1. **Prepare the Mower:** Check the oil level, fuel level, and ensure the blades are sharp.
2. **Adjust Cutting Height:** Set the mower to your desired cutting height based on the type of grass in your lawn.
3. **Start the Mower:** Follow the starting instructions in the manual. Typically, this involves engaging the throttle and pulling the starter cord.
4. **Mow in Rows:** Begin mowing along one edge of your lawn, moving in straight lines. Overlap each pass slightly for even coverage.
5. **Finish and Clean:** Once done, turn off the mower, clean the cutting deck, and store it in a dry place.

## Maintenance Tips for Optimal Performance

Regular maintenance helps ensure that your Craftsman Eager 1 runs smoothly and has a long lifespan. Here are some essential maintenance tips:

### 1. Regular Oil Changes

Changing the oil every 25 hours of use, or at least once a season, is recommended to keep the engine running efficiently. Always check the manual for the type of oil recommended.

### 2. Blade Maintenance

Sharpen the mower blades at least once a season or more often if you mow frequently. Dull blades can tear the grass rather than cut it, leading to an unhealthy lawn.

### 3. Clean the Air Filter

A clean air filter ensures optimal airflow to the engine. Inspect and clean the air filter regularly, replacing it as necessary according to the manual guidelines.

### 4. Inspect Spark Plug

Check the spark plug for wear and replace it if necessary. A faulty spark plug can lead to starting issues or

POOR ENGINE PERFORMANCE.

## 5. STORE PROPERLY

WHEN THE MOWING SEASON IS OVER, STORE THE MOWER IN A CLEAN, DRY LOCATION. CONSIDER DRAINING THE FUEL OR USING A FUEL STABILIZER TO PREVENT FUEL-RELATED PROBLEMS IN THE SPRING.

## CONCLUSION

THE **CRAFTSMAN EAGER 1 MANUAL** IS A CRITICAL COMPONENT FOR ANYONE LOOKING TO MAXIMIZE THEIR LAWN MOWING EXPERIENCE. FROM UNDERSTANDING THE MOWER'S FEATURES AND OPERATION TO PERFORMING ESSENTIAL MAINTENANCE TASKS, THE MANUAL PROVIDES ALL THE INFORMATION YOU NEED. BY FOLLOWING THE GUIDELINES AND TIPS OUTLINED IN THIS ARTICLE, YOU CAN ENSURE THAT YOUR CRAFTSMAN EAGER 1 REMAINS IN TOP CONDITION, MAKING LAWN CARE A BREEZE FOR YEARS TO COME. WHETHER YOU'RE A SEASONED MOWER OR A NOVICE, HAVING THE MANUAL ON HAND WILL HELP YOU MAKE THE MOST OF YOUR CRAFTSMAN EAGER 1 LAWN MOWER.

## FREQUENTLY ASKED QUESTIONS

### WHAT IS THE CRAFTSMAN EAGER 1 MANUAL PRIMARILY USED FOR?

THE CRAFTSMAN EAGER 1 MANUAL PROVIDES INSTRUCTIONS AND GUIDELINES FOR OPERATING AND MAINTAINING THE CRAFTSMAN EAGER 1 LAWN MOWER, INCLUDING SAFETY TIPS, ASSEMBLY INSTRUCTIONS, AND TROUBLESHOOTING PROCEDURES.

### WHERE CAN I FIND THE CRAFTSMAN EAGER 1 MANUAL?

THE CRAFTSMAN EAGER 1 MANUAL CAN TYPICALLY BE FOUND ON THE OFFICIAL CRAFTSMAN WEBSITE UNDER THE SUPPORT OR PRODUCT MANUALS SECTION, OR IT MAY BE AVAILABLE FOR DOWNLOAD IN PDF FORMAT.

### WHAT ARE SOME COMMON TROUBLESHOOTING TIPS INCLUDED IN THE CRAFTSMAN EAGER 1 MANUAL?

COMMON TROUBLESHOOTING TIPS IN THE CRAFTSMAN EAGER 1 MANUAL INCLUDE CHECKING THE FUEL LEVEL, ENSURING THE SPARK PLUG IS CLEAN, INSPECTING THE AIR FILTER, AND VERIFYING THAT THE MOWER BLADES ARE SHARP AND PROPERLY INSTALLED.

### DOES THE CRAFTSMAN EAGER 1 MANUAL INCLUDE MAINTENANCE SCHEDULES?

YES, THE CRAFTSMAN EAGER 1 MANUAL TYPICALLY INCLUDES MAINTENANCE SCHEDULES, OUTLINING RECOMMENDED INTERVALS FOR OIL CHANGES, AIR FILTER REPLACEMENTS, AND BLADE SHARPENING TO ENSURE OPTIMAL PERFORMANCE.

### ARE THERE SAFETY PRECAUTIONS MENTIONED IN THE CRAFTSMAN EAGER 1 MANUAL?

YES, THE CRAFTSMAN EAGER 1 MANUAL EMPHASIZES SEVERAL SAFETY PRECAUTIONS, SUCH AS WEARING APPROPRIATE CLOTHING, AVOIDING OPERATION IN WET CONDITIONS, AND KEEPING BYSTANDERS AWAY WHILE MOWING.

### CAN I GET A PHYSICAL COPY OF THE CRAFTSMAN EAGER 1 MANUAL?

YES, YOU CAN REQUEST A PHYSICAL COPY OF THE CRAFTSMAN EAGER 1 MANUAL BY CONTACTING CRAFTSMAN CUSTOMER SERVICE OR VISITING AN AUTHORIZED DEALER, THOUGH DIGITAL VERSIONS ARE MORE COMMONLY AVAILABLE.

Find other PDF article:

<https://soc.up.edu.ph/26-share/pdf?docid=xow67-8964&title=hackear-facebook-funciona-gratis-sin-encuestas-enero-2018.pdf>

## **Craftsman Eager 1 Manual**

### **Home | CRAFTSMAN®**

Official website for CRAFTSMAN®. Explore power tools, outdoor equipment, hand tools, storage products and more.

### **Find A Retailer | CRAFTSMAN**

Find a CRAFTSMAN® authorized provider near you and discover who sells CRAFTSMAN® tools online or in a retail store near you.

### **Shop Parts | CRAFTSMAN**

Sometimes products wear down and need repair or maintenance. Fortunately, you have several options to fix your products with Craftsman Parts & Service.

### **Power Tools and Accessories | CRAFTSMAN**

Browse high-performance power tools and accessories, including drivers, impacts, saws and more. Get the best quality for the job from Craftsman.

### **V20\* 5.0AH Lithium Ion Battery | CRAFTSMAN**

This V20\* 5.0Ah Lithium Ion Battery is compatible with the CRAFTSMAN® V20\* cordless power tool and outdoor tool lineup. The professional grade high performance cells provide improved power and a longer cycle life.

### **Home & Outdoor - Garden Tools, Mowers & More | CRAFTSMAN**

When it comes to shaping up your yard, look no further than CRAFTSMAN® to find the right equipment for you. Browse cordless and gas tools at CRAFTSMAN®. Take on large lawns and rough terrain with CRAFTSMAN® riding lawn mowers designed to ...

### **Shop All Mowers | CRAFTSMAN**

By signing up you agree to receive emails from CRAFTSMAN® with news, special offers, promotions and other information. You can unsubscribe at any time. See our Privacy Policy or ...

### **Customer Support | CRAFTSMAN**

Find out more information about CRAFTSMAN® tools, warranty, parts, service, and more with our customer support resources.

### **42 in. Gas Zero-Turn Riding Mower (Z3200) | CRAFTSMAN**

Transform your yard and mow up to 3 times faster than a walk behind\*. The high-performance 42 in. Gas Zero-Turn Riding Mower (Z3200) features a powerful 547cc single-cylinder engine designed for consistent mowing performance in thick, wet, heavy grass. Ideal for yards up to 2 acres, the 42 in. steel deck, robust steel frame, and dual hydrostatic transmissions offer ...

### ***V20\* System Cordless Power Tools | CRAFTSMAN***

Explore the CRAFTSMAN® V20\* System of cordless power tools and products. The V20\* System has the battery power, range and reliability to get your projects done.

### **Home | CRAFTSMAN®**

Official website for CRAFTSMAN®. Explore power tools, outdoor equipment, hand tools, storage products and more.

### **Find A Retailer | CRAFTSMAN**

Find a CRAFTSMAN® authorized provider near you and discover who sells CRAFTSMAN® tools online or in a retail store near you.

### **Shop Parts | CRAFTSMAN**

Sometimes products wear down and need repair or maintenance. Fortunately, you have several options to fix your products with ...

### Power Tools and Accessories | CRAFTSMAN

Browse high-performance power tools and accessories, including drivers, impacts, saws and more. Get the best quality for the job ...

### V20\* 5.0AH Lithium Ion Battery | CRAFTSMAN

This V20\* 5.0Ah Lithium Ion Battery is compatible with the CRAFTSMAN® V20\* cordless power tool and outdoor tool lineup. ...

Unlock the full potential of your Craftsman Eager 1 manual! Discover tips

[Back to Home](#)