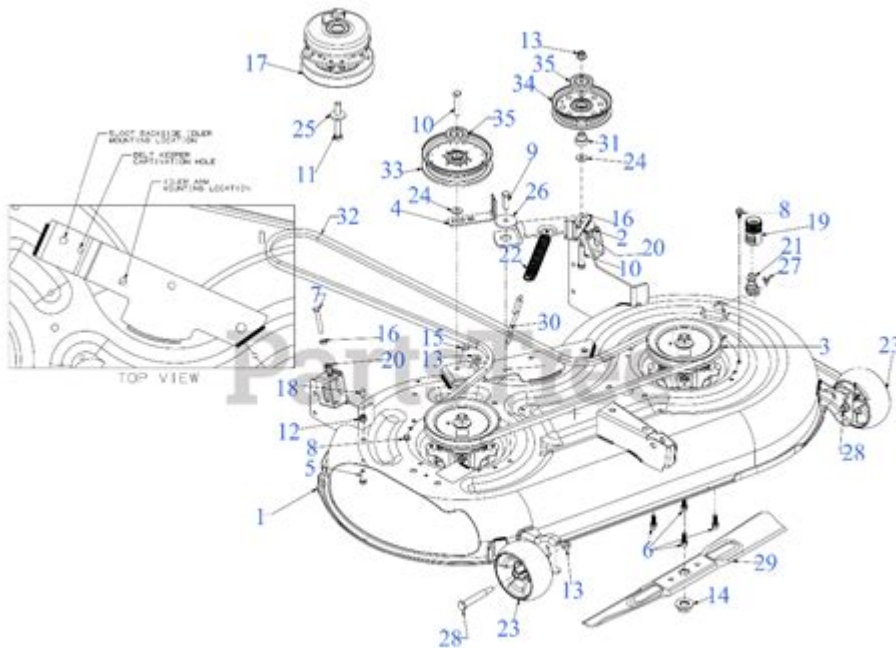


# Cub Cadet Zt1 54 Drive Belt Diagram



**Cub Cadet ZT1 54 Drive Belt Diagram** is an essential part of maintaining your lawn mower in optimal working condition. Understanding how the drive belt system operates and how to replace or adjust the drive belt can significantly enhance the performance and longevity of your Cub Cadet ZT1 54 mower. This article will provide a comprehensive overview of the drive belt diagram, its components, and step-by-step instructions on how to perform maintenance or replacement.

## Understanding the Drive Belt System

The drive belt in your Cub Cadet ZT1 54 mower plays a crucial role in transferring power from the engine to the wheels, allowing for smooth operation and maneuverability. A well-functioning drive belt ensures that your mower operates efficiently, while a worn or damaged belt can lead to performance issues.

## Components of the Drive Belt System

The drive belt system consists of several key components:

1. **Drive Belt:** The main component that transmits power.
2. **Pulleys:** These guide the belt and allow it to change direction.
3. **Idler Pulley:** This maintains tension on the drive belt.
4. **Engine Pulley:** Connected to the engine, it drives the belt.
5. **Transmission Pulley:** Transfers the power from the drive belt to the wheels.

Understanding these components is vital for diagnosing problems and performing maintenance effectively.

## Importance of the Drive Belt Diagram

The Cub Cadet ZT1 54 drive belt diagram serves as a visual guide for understanding how the belt interacts with the various components. This diagram is critical for:

- Installation: Ensuring the belt is routed correctly.
- Replacement: Knowing the correct path for a new belt.
- Maintenance: Identifying wear patterns and potential adjustments needed.

## Where to Find the Drive Belt Diagram

The drive belt diagram can usually be found in the following places:

- User Manual: The most reliable source for your specific model.
- Online Resources: Manufacturer websites often provide diagrams for various models.
- Repair Shops: Local repair shops may have access to service manuals.

## Steps to Replace the Drive Belt on Cub Cadet ZT1 54

Replacing the drive belt may seem daunting, but with the right tools and guidance, it can be done effectively. Here's a step-by-step guide to help you through the process:

### Tools and Materials Needed

Before starting, gather the following tools and materials:

- New drive belt
- Socket set
- Wrench set
- Screwdriver
- Safety gloves
- Safety glasses
- Owner's manual for reference

### Step-by-Step Replacement Process

1. Safety First: Disconnect the spark plug to prevent accidental starting.
2. Lift the Mower: Use a jack or mower lift to elevate the rear of the mower for better access.
3. Remove the Cutting Deck: Depending on your model, you may need to remove

the cutting deck to access the drive belt.

- Locate the pins or bolts securing the deck.
  - Carefully detach and set the deck aside.
4. Locate the Drive Belt: Refer to the drive belt diagram to identify the routing and position of the belt.
  5. Loosen the Idler Pulley: Use a wrench to loosen the idler pulley, which will relieve tension on the old belt.
  6. Remove the Old Belt: Carefully slide the old belt off the pulleys.
  7. Install the New Belt: Following the drive belt diagram, route the new belt around the pulleys.
    - Ensure it is aligned properly in the grooves.
  8. Tighten the Idler Pulley: Once the new belt is in place, tighten the idler pulley to maintain proper tension.
  9. Reattach the Cutting Deck: If you removed the cutting deck, reattach it securely.
  10. Reconnect the Spark Plug: Ensure the spark plug is connected before starting the mower.

## **Common Issues with the Drive Belt**

Even with regular maintenance, issues may arise with your Cub Cadet ZT1 54 drive belt. Being aware of these common problems can help you take preventative measures.

## **Signs of a Worn Drive Belt**

Look out for these telltale signs that your drive belt may need replacing:

- Slipping: If the mower struggles to move or the engine revs higher without corresponding speed, the belt may be slipping.
- Cracks or Fraying: Inspect the belt visually; any visible damage is a sign that it needs to be replaced.
- Strange Noises: Squealing or grinding noises while operating can indicate belt issues.
- Burning Smell: A burning odor could suggest that the belt is overheating due to excessive friction.

## **Maintenance Tips for Your Drive Belt**

To prolong the life of your drive belt, consider the following maintenance tips:

- Regular Inspections: Check the belt and pulleys for signs of wear and tear during routine maintenance.
- Clean the Pulley System: Debris can get caught in the pulleys, causing premature wear on the belt.
- Adjust Tension: Ensure the belt is always under the correct tension for optimal performance.
- Follow Manufacturer Guidelines: Always refer to your owner's manual for specific maintenance intervals and procedures.

## **Conclusion**

The Cub Cadet ZT1 54 drive belt diagram is an invaluable tool for any owner looking to maintain or repair their mower. By understanding the drive belt system, recognizing the signs of wear, and following a straightforward replacement process, you can ensure your mower runs smoothly for years to come. Regular maintenance and timely replacements not only enhance performance but also save you time and money in the long run.

## **Frequently Asked Questions**

### **What is the purpose of the drive belt in a Cub Cadet ZT1 54?**

The drive belt transmits power from the engine to the wheels, enabling the mower to move and operate effectively.

### **Where can I find the drive belt diagram for the Cub Cadet ZT1 54?**

The drive belt diagram can typically be found in the owner's manual or on the Cub Cadet official website under the support or resources section.

### **How do I replace the drive belt on a Cub Cadet ZT1 54?**

To replace the drive belt, you need to lift the mower deck, remove the old belt, and follow the drive belt diagram to properly install the new belt.

### **What tools are needed to change the drive belt on a Cub Cadet ZT1 54?**

You will need basic hand tools such as a socket wrench set, pliers, and possibly a screwdriver to access the belt area.

### **How often should the drive belt be inspected on a Cub Cadet ZT1 54?**

It's recommended to inspect the drive belt at least once a season or after every 25 hours of use for signs of wear and tear.

### **What are signs that the drive belt on my Cub Cadet ZT1 54 needs replacing?**

Signs include fraying, cracks, slipping, or if the mower is not moving as it should despite the engine running.

### **Can I use a generic belt for my Cub Cadet ZT1 54 instead of the OEM belt?**

While you can use a generic belt, it's recommended to use the OEM belt for optimal performance and to ensure proper fit as per the drive belt diagram.

# Is it difficult to follow the drive belt diagram for installation?

The drive belt diagram is designed to be straightforward; however, it's important to carefully follow each step for proper installation.

## What should I do if I lose the drive belt diagram for my Cub Cadet ZT1 54?

If you lose the diagram, you can access it online through the Cub Cadet website or contact customer support for assistance.

Find other PDF article:  
<https://soc.up.edu.ph/11-plot/files?docid=ian53-8455&title=calculus-with-analytical-geometry.pdf>

## Cub Cadet Zt1 54 Drive Belt Diagram

**cub** -   
Jul 13, 2024 · cubCUB1. CUB  
 ...

PSB CUB FAB SB OB ...  
PSB CUB FAB SB OB PSB CUB FAB SB OB  
 7

HONDA Super Cub C125  
HONDA Super Cub C125 2019 11 Super Cub C125 1958  
 Super Cub C100 ...

NZR ?  
NZR ?N (RZQZ\*N\*)  
 ...

HONDA X Hello Kitty SUPER CUB 110  
Mar 11, 2025 · 202450HELLO KITTY, HONDA 50  
HELLO KITTY SUPER CUB 110 ;

cuab=cua^cub ...  
Mar 21, 2013 · 312a1cuaa  
 ...

**wland** -   
Sep 6, 2024 · wlandWland1. \*\*

**cub** -   
cubCUBCENTER UTILITY BUILDING



Discover the Cub Cadet ZT1 54 drive belt diagram to simplify your maintenance tasks. Get clear insights and tips for optimal performance. Learn more now!

[Back to Home](#)