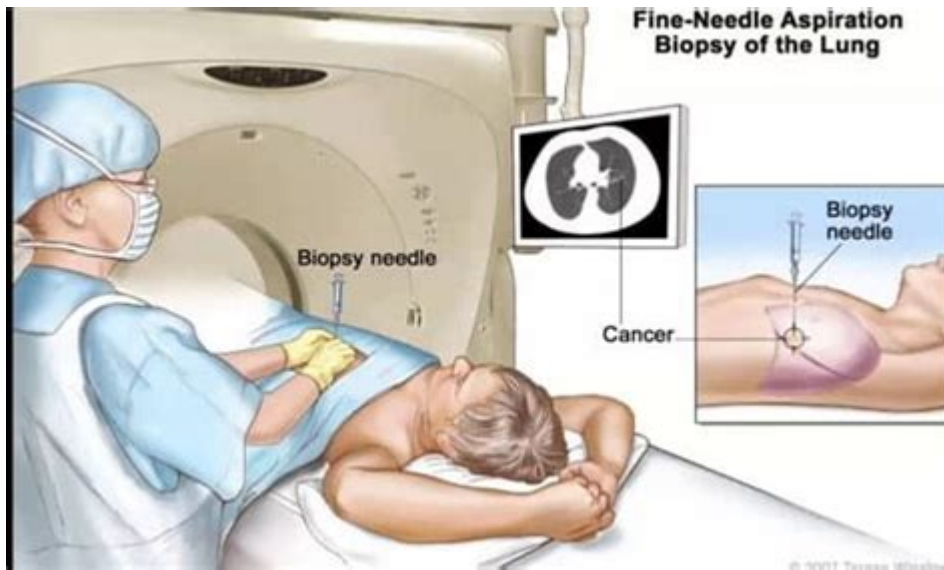


# Cpt Code Ct Guided Biopsy



CPT code CT guided biopsy refers to a specific coding used in the healthcare industry to identify a procedure whereby a biopsy is performed under the guidance of computed tomography (CT) imaging. This innovative technique allows healthcare professionals to accurately target suspicious lesions, masses, or areas within the body for diagnostic purposes. As medical technology continues to evolve, understanding the implications of these codes, the procedure itself, and its applications becomes increasingly vital for both practitioners and patients alike.

## Understanding CT Guided Biopsy

A CT guided biopsy is a minimally invasive procedure that utilizes CT imaging to assist in the collection of tissue samples from various organs and tissues within the body. This technique is particularly advantageous for diagnosing conditions such as cancer, infections, and inflammatory diseases.

## What is a CT Guided Biopsy?

CT guided biopsy involves the following steps:

1. Preparation: The patient is positioned on the CT scanner table, and the area where the biopsy will occur is identified and marked.
2. Imaging: A CT scan is performed to visualize the target area, providing a clear roadmap for the biopsy needle.
3. Anesthesia: Local anesthesia is administered to minimize discomfort during the procedure.
4. Needle Insertion: Using real-time CT imaging, the physician inserts a needle through the skin and into the targeted area to collect tissue samples.
5. Sample Collection: Several samples may be obtained to ensure an accurate diagnosis.
6. Post-Procedure Care: After the biopsy, the site is monitored for any complications, and the patient

is given aftercare instructions.

## **Importance of CT Guided Biopsy**

CT guided biopsies play a crucial role in modern medicine due to their precision and efficacy. Key benefits include:

- Minimally Invasive: Unlike traditional surgical biopsies, CT guided biopsies require only a small incision, leading to less pain and a quicker recovery time.
- Enhanced Accuracy: The use of CT imaging ensures that the biopsy needle is accurately placed, increasing the likelihood of obtaining a representative tissue sample.
- Rapid Diagnosis: The speed of the procedure allows for quicker diagnosis and the initiation of treatment if necessary.
- Broad Applicability: CT guided biopsies can be performed on various organs, including the lungs, liver, kidneys, and lymph nodes.

## **CPT Coding for CT Guided Biopsy**

CPT codes are standardized codes used by healthcare providers to document medical procedures and services. Understanding the specific CPT code for CT guided biopsies is essential for accurate billing and insurance reimbursement.

### **Specific CPT Codes**

The following are the relevant CPT codes for CT guided biopsies:

- 77012: This code is used for CT guidance for needle placement.
- 11100: This code is employed for a biopsy of a skin lesion.
- 11101: This code is used for each additional biopsy of a skin lesion.
- 32405: This code is for a biopsy of the lung or pleura.
- 49000: This code is for a biopsy of the abdominal cavity.

It is crucial to use the correct CPT code as it directly affects reimbursement rates and insurance claims.

## **Documentation Requirements**

Proper documentation is essential when billing for a CT guided biopsy. Healthcare providers should ensure that they include the following in their documentation:

1. Patient Information: Name, age, medical history, and reason for the biopsy.
2. Procedure Details: A detailed account of the procedure, including the technique used, the physician's assessment, and any imaging performed.

3. Findings: Any notable findings during the procedure, including the location and appearance of the lesion.
4. Pathology Reports: If available, include the pathology reports from the tissue samples collected.
5. Follow-Up Care: Instructions given to the patient post-procedure.

## Risks and Complications

While CT guided biopsy is generally safe, it is essential to be aware of potential risks and complications that may arise from the procedure.

### Common Risks

1. Bleeding: Minor bleeding at the biopsy site is common; however, significant bleeding can occur in rare cases.
2. Infection: There is a slight risk of infection at the biopsy site.
3. Organ Injury: In some instances, surrounding organs or tissues may be inadvertently injured during the needle insertion.
4. Pneumothorax: When lung tissue is biopsied, there is a risk of pneumothorax, which is the collapse of the lung.

### Managing Risks

To minimize the risks associated with CT guided biopsies, healthcare providers can implement the following strategies:

- Pre-Procedure Assessment: A thorough assessment of the patient's medical history and current medications to identify any potential complications.
- Informed Consent: Ensuring that the patient understands the procedure, including risks and benefits, and obtaining informed consent.
- Careful Planning: Utilizing advanced imaging techniques to plan the biopsy approach meticulously.

## Post-Procedure Care

After a CT guided biopsy, proper post-procedure care is essential for optimal recovery and to monitor for any complications.

### Post-Procedure Instructions

1. Observation: Patients may be monitored for a short period after the procedure to check for any immediate complications.
2. Activity Restrictions: Patients are typically advised to avoid strenuous activities for a few days

following the biopsy.

3. Signs of Complications: Patients should be instructed to report any signs of complications, such as excessive bleeding, increased pain, or fever.

4. Follow-Up Appointments: Scheduling follow-up appointments to discuss pathology results and further management if necessary.

## **When to Seek Medical Attention**

Patients should be aware of specific symptoms that warrant immediate medical attention, including:

- Severe or worsening pain at the biopsy site
- Signs of infection such as redness, swelling, or discharge
- Difficulty breathing (in cases where lung biopsies were performed)
- Fever over 100.4°F (38°C)

## **Conclusion**

In summary, the CPT code CT guided biopsy is an essential aspect of modern diagnostic medicine, providing healthcare professionals with the tools necessary to obtain tissue samples accurately and efficiently. As technology continues to advance, the role of CT guided biopsies in diagnosing various medical conditions will only grow, making it imperative for both healthcare practitioners and patients to understand the intricacies of the procedure, the associated risks, and the importance of proper coding for reimbursement. Through diligent documentation and adherence to best practices, providers can ensure that patients receive the highest standard of care during and after this vital procedure.

## **Frequently Asked Questions**

### **What is a CPT code for a CT-guided biopsy?**

The CPT code for a CT-guided biopsy typically falls under the range 77012 for CT imaging guidance, with additional codes for the specific biopsy procedure.

### **Why is a CT-guided biopsy performed?**

A CT-guided biopsy is performed to obtain a tissue sample from a suspicious area, allowing for accurate diagnosis of conditions such as cancer or infections.

### **What are the risks associated with a CT-guided biopsy?**

Risks include bleeding, infection, damage to surrounding tissues, and allergic reactions to contrast material used during the procedure.

## How is a CT-guided biopsy conducted?

The procedure involves using CT imaging to accurately locate the target tissue, followed by the insertion of a needle to collect a biopsy sample.

## What preparation is needed before a CT-guided biopsy?

Patients may need to avoid certain medications, fast for a specified period, and discuss any allergies or medical conditions with their healthcare provider.

## How long does it take to get results from a CT-guided biopsy?

Results from a CT-guided biopsy can typically take several days to a week, depending on the laboratory processing time.

## Is sedation required for a CT-guided biopsy?

Sedation is not always required; however, mild sedation may be offered to help the patient remain comfortable and relaxed during the procedure.

## What should patients expect during recovery from a CT-guided biopsy?

Patients may experience mild discomfort or bruising at the biopsy site and are usually advised to rest for a short period; they will receive specific aftercare instructions from their physician.

Find other PDF article:

<https://soc.up.edu.ph/03-page/Book?docid=HEt92-1223&title=a-prayer-by-max-ehrmann.pdf>

## Cpt Code Ct Guided Biopsy

*Estimate Shipping Cost - The UPS St...*

Please provide information about your shipment to estimate the shipping ...

### **Shipping Costs and Rates | UPS - India**

Use this page as a guide to find out what UPS shipping rates are available to ...

*Parcel Delivery Quote | UPS - India*

Get a parcel delivery quote with the UPS shipping calculator today. ...

### **Shipping Cost Calculator from Unit...**

Estimate rates to India with our international shipping cost calculator. Get ...

### **Comparing Shipping Rates to India: USP...**

Sep 27, 2024 · Compare international shipping rates for USPS, UPS, FedEx, ...

### *China Tour Questions and Answers, China Travel Q&A*

Having questions about tours to China? Ask your China travel questions and get answers from our experienced travelers. Also share your insights with others here.

Discover essential insights about CPT code CT guided biopsy. Learn more about its applications

[Back to Home](#)