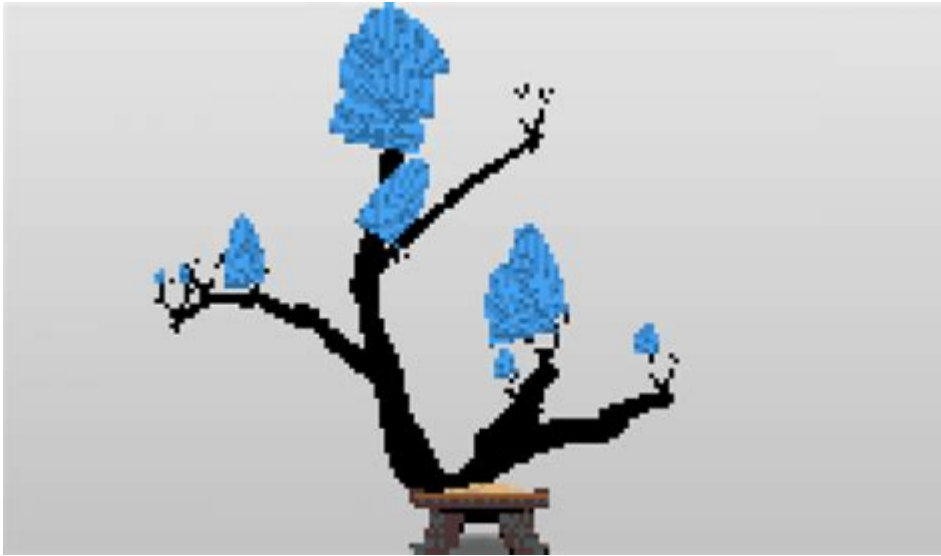


Cool Math Games Bonsai Builder



Cool Math Games Bonsai Builder is an engaging online game that combines creativity with mathematical concepts, allowing players to design and cultivate their own virtual bonsai trees. This unique game is a part of the broader Cool Math Games platform, which is known for offering a variety of educational yet entertaining games. In this article, we will explore the features, benefits, and strategies for playing Bonsai Builder, making it a go-to choice for both fun and learning.

What is Cool Math Games Bonsai Builder?

Bonsai Builder is an interactive game that encourages players to create their own bonsai trees by manipulating various elements such as shape, size, and color. It not only serves as a platform for artistic expression but also introduces players to basic mathematical principles related to geometry and spatial awareness.

The Concept Behind Bonsai Builder

In Bonsai Builder, players are tasked with growing a tree that reflects their personal style. The game incorporates several core concepts:

- **Geometry:** Understanding shapes and angles is crucial as players adjust the tree's branches and leaves.
- **Creativity:** Players can experiment with colors and designs, fostering creativity in a structured environment.
- **Problem-Solving:** As players create their bonsai, they face challenges that require critical thinking and planning.

Features of Cool Math Games Bonsai Builder

Bonsai Builder is packed with features that enhance the gaming experience. Here are some of the standout elements:

- **User-Friendly Interface:** The game is designed with an intuitive interface that makes it easy for players of all ages to navigate.
- **Customizable Trees:** Players can choose various styles, colors, and sizes for their bonsai trees, allowing for endless customization.
- **Educational Elements:** The game subtly incorporates math concepts, making it a beneficial tool for learning while playing.
- **Progress Tracking:** Players can save their creations, track their progress, and revisit their previous designs.
- **Inspiration Gallery:** Bonsai Builder includes a gallery of designs that can inspire players or provide ideas for their creations.

Benefits of Playing Cool Math Games Bonsai Builder

Engaging with Bonsai Builder offers numerous advantages, both educational and recreational. Here are a few notable benefits:

1. Enhances Spatial Awareness

Playing Bonsai Builder helps improve spatial awareness as players manipulate different parts of the tree. Understanding how changes in angles and shapes affect the overall look of the bonsai can translate into better skills in geometry.

2. Fosters Creativity

The game allows players to express their artistic side, encouraging creativity. The freedom to design unique bonsai trees promotes imaginative thinking and innovation.

3. Develops Problem-Solving Skills

As players encounter challenges in the game, they must think critically to resolve them. This process enhances their problem-solving skills, which are valuable in academic and real-life situations.

4. Provides a Relaxing Experience

Bonsai Builder can be a calming experience, allowing players to unwind while focusing on creating something beautiful. The soothing nature of the game can serve as a stress reliever.

Strategies for Success in Cool Math Games Bonsai Builder

To make the most of your experience in Bonsai Builder, consider these strategies:

1. Experiment with Designs

Don't be afraid to try out different styles and combinations. Experimentation can lead to discovering unique designs that you might not have considered initially.

2. Pay Attention to Proportions

Understanding the proportions of different parts of the tree can significantly impact its overall appearance. Ensure that the branches and leaves are balanced to create a harmonious look.

3. Use the Inspiration Gallery

Take advantage of the inspiration gallery to gather ideas for your designs. It can spark creativity and help you see what's possible within the game.

4. Take Breaks

If you find yourself getting frustrated or stuck, take a break. Stepping away

can provide a fresh perspective when you return to the game.

Conclusion

Cool Math Games Bonsai Builder is not just a game; it's an educational tool that combines math and creativity in a fun way. With its user-friendly interface, customizable options, and engaging gameplay, it appeals to a wide range of players. Whether you're looking to enhance your spatial awareness, foster creativity, or simply find a relaxing activity, Bonsai Builder has something to offer.

By utilizing the strategies outlined above and embracing the opportunity to experiment with designs, players can maximize their enjoyment and learning from this unique game. So, dive in and start creating your virtual bonsai masterpiece today!

Frequently Asked Questions

What is Cool Math Games Bonsai Builder?

Cool Math Games Bonsai Builder is an online game where players can create and customize their own bonsai trees, using various tools and options to design unique and aesthetically pleasing plants.

Is Bonsai Builder suitable for all ages?

Yes, Bonsai Builder is designed to be family-friendly and can be enjoyed by players of all ages, making it a great way to explore creativity in a relaxing environment.

What kind of gameplay mechanics does Bonsai Builder offer?

The game offers simple point-and-click mechanics, allowing players to select different tree types, shapes, and decorations, fostering an engaging and user-friendly experience.

Can players save their creations in Bonsai Builder?

Currently, Bonsai Builder does not have a save feature, but players can take screenshots of their designs to share with others.

Are there any in-game challenges in Bonsai Builder?

Bonsai Builder focuses on freeform creativity rather than challenges; however, players can set personal goals, such as creating a specific type of tree or using particular decorations.

What are the benefits of playing Bonsai Builder?

Playing Bonsai Builder can enhance creativity, reduce stress, and provide a sense of accomplishment through the art of tree design.

Is Bonsai Builder free to play?

Yes, Bonsai Builder is free to play on the Cool Math Games website, with no downloads or subscriptions required.

Can Bonsai Builder be played on mobile devices?

Yes, Bonsai Builder is accessible on mobile devices through web browsers, making it easy to play on the go.

Are there similar games to Bonsai Builder on Cool Math Games?

Yes, Cool Math Games offers several other creative and simulation games, such as 'Garden Decoration' and 'Flower Garden,' which also focus on design and customization.

Find other PDF article:

<https://soc.up.edu.ph/44-slide/Book?trackid=Xmf57-6333&title=occupational-therapy-assessments-for-adults.pdf>

Cool Math Games Bonsai Builder

COOL -

COOL COOL COOL

...

COOLENGLISH: □□□□

[illegible]

coolenglish -

2025 07 08 (Tue) 14:32

[illegible]

Oct 3, 2024 · 1. /gamemode survival 2. /gamemode creative ...

Cool! □□□□□□ - □□□□

Jan 25, 2011 · cool [ku:l] [kul] cool 1 adj. 2 vt. & vi. 3 n. ...

1.8.8 -
1.8.81.1406096486
2. ...

Discover the fun of Cool Math Games Bonsai Builder! Create and nurture your own bonsai tree in this engaging online game. Learn more and start building today!

[Back to Home](#)