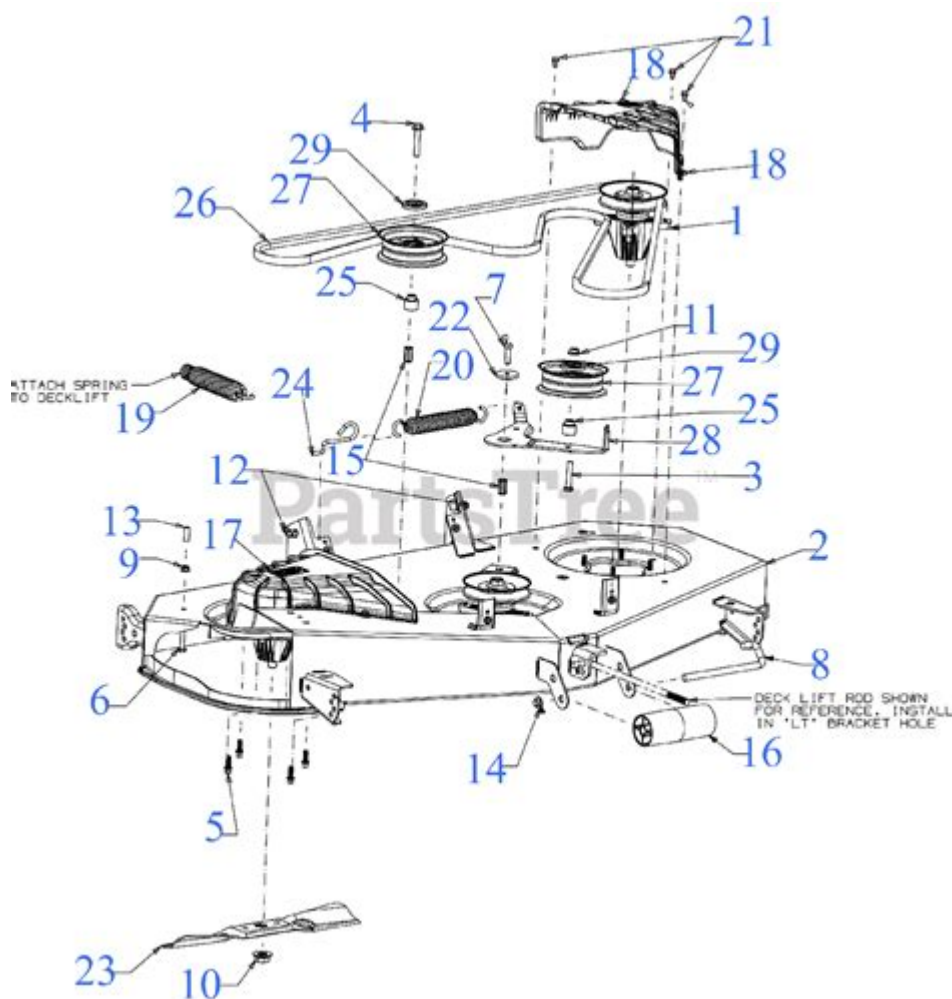


Cub Cadet Xt1 Lt50 Deck Belt Diagram



Cub Cadet XT1 LT50 Deck Belt Diagram

The Cub Cadet XT1 LT50 is a popular lawn tractor designed for homeowners who need a reliable and efficient way to maintain their lawns. One of the essential components of this machine is its deck belt, which plays a crucial role in transferring power from the engine to the mower blades. Understanding the deck belt diagram is vital for anyone looking to maintain or replace the belt on their XT1 LT50. This article will provide an in-depth look at the deck belt, its diagram, and tips for maintenance.

Understanding the Deck Belt

The deck belt is a key component of the Cub Cadet XT1 LT50's mowing system. It connects the engine's power to the mower blades, allowing them to rotate and cut grass effectively. Over time, the belt may wear out due to exposure to elements, friction, and general use. Recognizing the signs of a worn belt is important for maintaining optimal performance.

Signs of a Worn Deck Belt

There are several indicators that your deck belt may need maintenance or replacement:

1. **Slipping:** If the belt slips off the pulleys frequently, it may be worn out or improperly installed.
2. **Visible Damage:** Cracks, frays, or breaks in the belt are clear signs that it needs replacement.
3. **Noise:** A noisy operation, including squeaking or grinding sounds, often indicates a problem with the belt or pulleys.
4. **Inconsistent Cutting:** If the mower blades do not spin evenly or at all, it may be time to check the belt.

Deck Belt Diagram Overview

The deck belt diagram for the Cub Cadet XT1 LT50 illustrates how the belt should be routed around the pulleys and components. Understanding this diagram is crucial for anyone performing maintenance or making repairs.

Components Involved in the Deck Belt System

To comprehend the deck belt diagram fully, one must be familiar with the various components involved:

- **Engine Pulley:** The belt connects to the engine pulley, which provides the power needed to turn the mower blades.
- **Deck Pulleys:** These pulleys guide the belt around the deck.
- **Idler Pulley:** This component maintains tension in the belt to ensure it stays securely in place during operation.
- **Mower Blades:** The belt directly drives these blades, allowing for effective grass cutting.

Reading the Deck Belt Diagram

The deck belt diagram is typically found in the operator's manual or on a label located on the mower itself. It provides a visual representation of how the belt should be routed. Here's a simplified step-by-step guide to reading the diagram:

1. **Locate the Starting Point:** Identify where the belt begins, usually at the engine pulley.
2. **Follow the Routing:** Trace the path of the belt as shown in the diagram, noting how it wraps around each pulley.
3. **Check Tension Points:** Look for any idler pulleys that maintain belt tension and ensure the routing is correct for optimal performance.
4. **Verify Connections:** Make sure each connection highlighted in the diagram is accurate and secure.

Replacing the Deck Belt

If you've determined that your deck belt needs replacement, follow these steps for a safe and effective process.

Tools and Materials Needed

Before starting, gather the following tools and materials:

- New deck belt (specific to the Cub Cadet XT1 LT50)
- Socket set or wrenches
- Screwdrivers
- Safety gloves
- User manual for reference

Step-by-Step Replacement Process

1. **Safety First:** Ensure the mower is turned off, and disconnect the battery for safety.
2. **Remove the Deck:** Depending on the model, you may need to detach the mower deck from the chassis. Follow the instructions in the manual for your specific model.
3. **Remove the Old Belt:** Locate the tensioning mechanism and release the tension on the belt. Carefully remove the old belt from the pulleys.
4. **Install the New Belt:** Refer to the deck belt diagram and route the new belt around the pulleys as indicated. Ensure it sits properly in the grooves.
5. **Reattach the Deck:** Once the belt is in place, reattach the mower deck to the chassis, ensuring all connections are secure.
6. **Reconnect the Battery:** Once everything is reassembled, reconnect the battery.
7. **Test the Mower:** Start the mower and engage the blades to ensure everything is functioning correctly.

Maintenance Tips for the Deck Belt

Proper maintenance of the deck belt can prolong its life and ensure efficient operation. Here are some tips:

- **Regular Inspections:** Frequently check the belt for signs of wear or damage.
- **Keep the Deck Clean:** Grass and debris can accumulate around the deck and pulleys, which can affect the belt's performance. Clean the deck regularly.
- **Adjust Tension as Needed:** If the belt appears loose, adjust the tension to ensure proper operation.
- **Store Properly:** When not in use, store the mower in a dry location to prevent deterioration of the belt.

Conclusion

Understanding the **Cub Cadet XT1 LT50 deck belt diagram** and how to maintain and replace the deck belt is essential for any lawn care enthusiast. Regular maintenance can prevent costly repairs and ensure that your mower operates efficiently. By following the guidelines outlined in this article, you can effectively manage your lawn tractor's performance and keep your yard looking its best. Remember, if you ever feel unsure about the process, consulting a professional or referring to the user manual can provide additional guidance.

Frequently Asked Questions

What is the purpose of the deck belt on a Cub Cadet XT1 LT50?

The deck belt on a Cub Cadet XT1 LT50 is responsible for transferring power from the engine to the mower deck, allowing the blades to rotate and cut grass.

Where can I find the deck belt diagram for my Cub Cadet XT1 LT50?

The deck belt diagram for the Cub Cadet XT1 LT50 can typically be found in the owner's manual, on the Cub Cadet website, or on the underside of the mower deck.

How do I replace the deck belt on a Cub Cadet XT1 LT50?

To replace the deck belt on a Cub Cadet XT1 LT50, you should first remove the mower deck, then detach the old belt from the pulleys, and finally install the new belt according to the diagram.

What are the signs that my Cub Cadet XT1 LT50 deck belt needs replacement?

Signs that the deck belt may need replacement include cracks, fraying, excessive wear, or if the blades are not engaging properly.

Can I use a generic deck belt for my Cub Cadet XT1 LT50?

While it is possible to use a generic deck belt, it is recommended to use an OEM (original equipment manufacturer) belt for the best fit and performance.

How often should I check the deck belt on my Cub Cadet XT1 LT50?

It is advisable to check the deck belt at the beginning of each mowing season and regularly during use for any signs of wear or damage.

What tools do I need to adjust or replace the deck belt on a Cub Cadet XT1 LT50?

To adjust or replace the deck belt, you typically need basic tools such as a socket set, wrenches, and possibly a screwdriver, depending on your mower's configuration.

Is there a video tutorial available for replacing the deck belt on a Cub Cadet XT1 LT50?

Yes, many video tutorials are available on platforms like YouTube that provide step-by-step guidance on replacing the deck belt for the Cub Cadet XT1 LT50.

Find other PDF article:

<https://soc.up.edu.ph/68-fact/pdf?dataid=IqT30-8716&title=yoga-teacher-training-syllabus.pdf>

Cub Cadet Xt1 Lt50 Deck Belt Diagram

cub -

Jul 13, 2024 · cub CUB 1. CUB ...

PSB CUB FAB SB OB ...

PSB CUB FAB SB OB PSB CUB FAB SB OB 7

HONDA Super Cub C125

HONDA Super Cub C125 2019 11 Super Cub C125 1958 Super Cub C100 ...

NZQR ?_

NZQR ?N (RZQZ*N*) ...

HONDA X Hello Kitty SUPER CUB 110

Mar 11, 2025 · 202450HELLO KITTY, HONDA 50 HELLO KITTY SUPER CUB 110 ; ...

cuab=cuaacub ...

Mar 21, 2013 · 312a1cuaa ...

wland -

Sep 6, 2024 · wlandWland1. ** ...

cub -

cuB CUB CENTER UTILITY BUILDING
 ...

OEM FOB SKD CKD
 OEM FOB SKD CKD 1 OEM
 ...

cub (cub)
 Apr 20, 2024 · cub cub B B CuB U B A (CuB
 AU (CuB),

cub -
 Jul 13, 2024 · cub CUB 1. CUB
 ...

PSB CUB FAB SB OB
 PSB CUB FAB SB OB PSB CUB FAB SB OB
 7

HONDA Super Cub C125
 HONDA Super Cub C125 2019 11 Super Cub C125 1958
 Super Cub C100

N Z Q R ?
 N Z Q R ? N (R Z Q Z* N*
 ...

HONDA X Hello Kitty SUPER CUB 110
 Mar 11, 2025 · 2024 50 HELLO KITTY, HONDA 50
 HELLO KITTY SUPER CUB 110 ;

cu a ∪ b = cua ∩ cub
 Mar 21, 2013 · 3 1 2 a 1 cua a
 ...

wland -
 Sep 6, 2024 · wland Wland 1. **
 ...

cub -
 cub CUB CENTER UTILITY BUILDING
 ...

OEM FOB SKD CKD
 OEM FOB SKD CKD 1 OEM
 ...

cub (cub)
 Apr 20, 2024 · cub cub B B CuB U B A (CuB
 AU (CuB),

Discover the Cub Cadet XT1 LT50 deck belt diagram for easy maintenance and repair. Learn how to troubleshoot and replace your belt effectively.

[Back to Home](#)