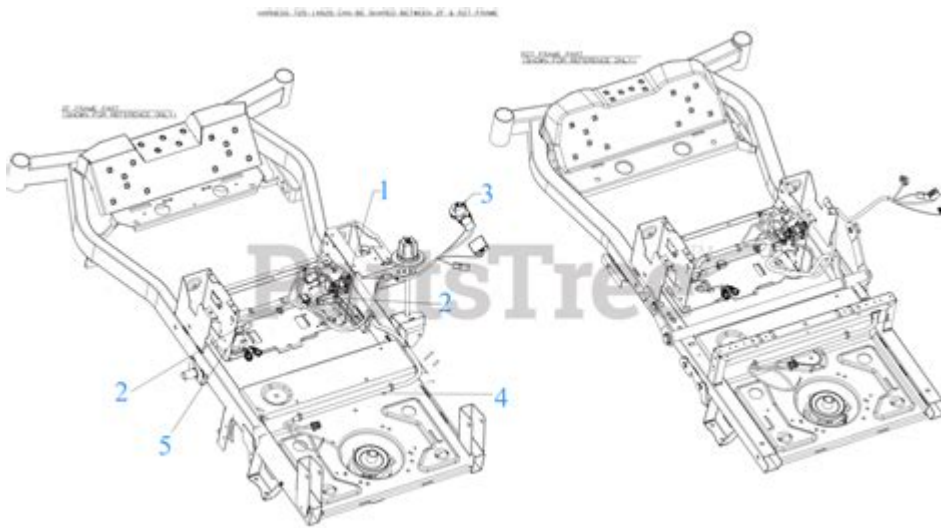


Craftsman Z5800 Drive Belt Diagram



Craftsman Z5800 drive belt diagram is an essential component for understanding the mechanics behind the operation of this popular riding lawn mower. The drive belt plays a critical role in transferring power from the engine to the mower's wheels, allowing for effective movement across various terrains. In this article, we will delve into the specifics of the Craftsman Z5800 drive belt diagram, its importance, maintenance tips, and other related information that will help you keep your mower in optimal working condition.

Understanding the Craftsman Z5800 Mower

The Craftsman Z5800 is a zero-turn riding mower designed for residential use. It is equipped with advanced features that allow for efficient lawn care, including:

- **Powerful Engine:** Typically powered by a reliable engine that provides ample horsepower for mowing large areas.
- **Zero-Turn Capability:** This feature allows for increased maneuverability, making it easier to navigate around obstacles in your yard.
- **Sturdy Construction:** Built to withstand regular use, the Z5800 is designed with durability in mind.

Importance of the Drive Belt

The drive belt is a vital component of the Craftsman Z5800 mower. Here's why:

1. **Power Transmission:** The drive belt transmits power from the engine to the transmission and subsequently to the wheels. This allows the mower to move forward and backward.
2. **Mowing Functionality:** In addition to propulsion, the drive belt is also responsible for powering the mower blades, facilitating effective cutting of grass.
3. **Efficiency:** A well-functioning drive belt ensures that the mower operates

smoothly, reducing wear and tear on other components.

Components of the Drive Belt System

To better understand the Craftsman Z5800 drive belt diagram, it is essential to identify the various components involved in the drive belt system:

- Drive Belt: The primary component that connects the engine to the transmission.
- Pulleys: These guide the drive belt and help in changing the direction of power transmission.
- Idler Pulley: Maintains tension on the drive belt to prevent slipping.
- Transmission: Receives power from the engine via the drive belt and transfers it to the wheels.
- Blades: In some cases, the drive belt also powers the mower blades.

Craftsman Z5800 Drive Belt Diagram Overview

The Craftsman Z5800 drive belt diagram illustrates how these components interconnect. Here's what you might typically find in the diagram:

1. Belt Routing: The diagram shows the correct path for the drive belt, indicating how it wraps around pulleys and idlers.
2. Tension Points: It highlights where the idler pulley is located and how tension is applied to the belt.
3. Connection Points: The diagram marks connection points to the engine and transmission, ensuring that users can easily identify where the belt should attach.

How to Replace the Drive Belt

Replacing the drive belt on your Craftsman Z5800 is a task that can be done with some basic tools and mechanical knowledge. Here is a step-by-step guide on how to proceed:

Tools Needed

- Socket set
- Wrench set
- Screwdriver
- New drive belt
- Safety gloves and goggles

Step-by-Step Instructions

1. Preparation:
 - Ensure the mower is on a flat surface and the engine is turned off.
 - Disconnect the spark plug to prevent accidental starting.

2. Remove the Old Belt:

- Access the drive belt by removing the mower deck. This may involve unscrewing bolts or using quick-release pins.
- Locate the drive belt and observe how it is routed. Refer to the Craftsman Z5800 drive belt diagram for guidance.
- Carefully detach the belt from the pulleys and idler.

3. Install the New Belt:

- Take the new drive belt and route it according to the diagram. Make sure it fits snugly around the pulleys.
- Reattach the idler pulley to maintain tension on the new belt.

4. Reassemble the Mower:

- Reattach the mower deck, ensuring all fasteners are secured.
- Reconnect the spark plug.

5. Testing:

- Start the engine and run the mower at low speed to ensure the new drive belt is functioning correctly. Listen for any unusual noises that could indicate misalignment.

Maintenance Tips for the Drive Belt

To prolong the life of your Craftsman Z5800 drive belt and ensure optimal performance, consider the following maintenance tips:

- **Regular Inspections:** Periodically check the condition of the drive belt for signs of wear, cracks, or fraying. Early detection can prevent further issues.
- **Cleanliness:** Keep the area around the drive belt free from debris and grass clippings, which can cause premature wear.
- **Proper Tension:** Ensure that the drive belt has the correct amount of tension. A belt that is too loose may slip, while one that is too tight can wear out quickly.
- **Seasonal Maintenance:** At the start of each mowing season, inspect the drive belt along with other critical components of the mower.
- **Follow Manufacturer Guidelines:** Always refer to the owner's manual for specific maintenance recommendations and intervals.

Common Issues and Troubleshooting

Despite proper maintenance, drive belts can encounter issues. Here are some common problems and their solutions:

1. Slipping Belt:

- **Cause:** A worn belt or improper tension.
- **Solution:** Inspect the belt for wear and adjust the tension or replace the belt if necessary.

2. Belt Fraying or Cracking:

- **Cause:** Age, excessive heat, or debris accumulation.
- **Solution:** Replace the belt immediately to prevent further damage to the mower.

3. Unusual Noises:

- Cause: Misalignment of the belt or damaged pulleys.
- Solution: Stop the mower and inspect the alignment, adjusting as needed.

4. Loss of Power:

- Cause: A broken or severely worn belt.
- Solution: Replace the drive belt to restore functionality.

Conclusion

The Craftsman Z5800 drive belt diagram is an invaluable resource for understanding the drive belt system of your mower. By familiarizing yourself with the components, learning how to replace the belt, and adhering to maintenance tips, you can ensure your Craftsman Z5800 operates efficiently and effectively. Regular inspections and prompt attention to any issues will keep your mower in peak condition, allowing you to maintain your lawn with ease.

Frequently Asked Questions

What is the purpose of the drive belt in the Craftsman Z5800?

The drive belt in the Craftsman Z5800 is responsible for transferring power from the engine to the mower's wheels, allowing for movement and operation.

Where can I find the drive belt diagram for the Craftsman Z5800?

The drive belt diagram for the Craftsman Z5800 can typically be found in the owner's manual or on the manufacturer's website. Additionally, many online forums and repair websites provide diagrams.

How do I replace the drive belt on a Craftsman Z5800?

To replace the drive belt on a Craftsman Z5800, first disconnect the battery, remove the old belt following the diagram, and then install the new belt in the same configuration.

What tools do I need to replace the drive belt on a Craftsman Z5800?

You will typically need basic hand tools like wrenches, a socket set, and possibly a screwdriver to remove panels and access the drive belt.

How often should I check the drive belt on my Craftsman Z5800?

It's recommended to check the drive belt on your Craftsman Z5800 at least once a season or after every 50 hours of operation for wear and tear.

What are the signs that the drive belt on my Craftsman Z5800 needs replacing?

Signs that the drive belt needs replacing include slippage, fraying, cracks, or if the mower fails to move properly despite the engine running.

Can I use a generic drive belt for my Craftsman Z5800?

While it's possible to use a generic drive belt, it's recommended to use OEM parts for the Craftsman Z5800 to ensure proper fit and function.

Is there a video tutorial available for replacing the drive belt on a Craftsman Z5800?

Yes, there are numerous video tutorials available on platforms like YouTube that guide you through the process of replacing the drive belt on a Craftsman Z5800.

Find other PDF article:

<https://soc.up.edu.ph/58-view/files?dataid=swl96-4634&title=the-art-of-classroom-inquiry.pdf>

[Craftsman Z5800 Drive Belt Diagram](#)

[Home](#) | [CRAFTSMAN®](#)

Official website for CRAFTSMAN®. Explore power tools, outdoor equipment, hand tools, storage products and more.

Find A Retailer | CRAFTSMAN

Find a CRAFTSMAN® authorized provider near you and discover who sells CRAFTSMAN® tools online or in a retail store near you.

Shop Parts | CRAFTSMAN

Sometimes products wear down and need repair or maintenance. Fortunately, you have several options to fix your products with Craftsman Parts & Service.

Power Tools and Accessories | [CRAFTSMAN](#)

Browse high-performance power tools and accessories, including drivers, impacts, saws and more. Get the best quality for the job from Craftsman.

V20* 5.0AH Lithium Ion Battery | CRAFTSMAN

This V20* 5.0Ah Lithium Ion Battery is compatible with the CRAFTSMAN® V20* cordless power tool and outdoor tool lineup. The professional grade high performance cells provide improved ...

Home & Outdoor - Garden Tools, Mowers & More | CRAFTSMAN

When it comes to shaping up your yard, look no further than CRAFTSMAN® to find the right equipment for you. Browse cordless and gas tools at CRAFTSMAN®. Take on large lawns ...

Shop All Mowers | CRAFTSMAN

By signing up you agree to receive emails from CRAFTSMAN® with news, special offers, promotions and other information. You can unsubscribe at any time. See our Privacy Policy or ...

Customer Support | CRAFTSMAN

Find out more information about CRAFTSMAN® tools, warranty, parts, service, and more with our customer support resources.

42 in. Gas Zero-Turn Riding Mower (Z3200) | CRAFTSMAN

Transform your yard and mow up to 3 times faster than a walk behind*. The high-performance 42 in. Gas Zero-Turn Riding Mower (Z3200) features a powerful 547cc single-cylinder engine ...

V20* System Cordless Power Tools | CRAFTSMAN

Explore the CRAFTSMAN® V20* System of cordless power tools and products. The V20* System has the battery power, range and reliability to get your projects done.

Home | CRAFTSMAN®

Official website for CRAFTSMAN®. Explore power tools, outdoor equipment, hand tools, storage products and more.

Find A Retailer | CRAFTSMAN

Find a CRAFTSMAN® authorized provider near you and discover who sells CRAFTSMAN® tools online or in a retail store near you.

Shop Parts | CRAFTSMAN

Sometimes products wear down and need repair or maintenance. Fortunately, you have several options to fix your products with Craftsman Parts & Service.

Power Tools and Accessories | CRAFTSMAN

Browse high-performance power tools and accessories, including drivers, impacts, saws and more. Get the best quality for the job from Craftsman.

V20* 5.0AH Lithium Ion Battery | CRAFTSMAN

This V20* 5.0Ah Lithium Ion Battery is compatible with the CRAFTSMAN® V20* cordless power tool and outdoor tool lineup. The professional grade high performance cells provide improved ...

Home & Outdoor - Garden Tools, Mowers & More | CRAFTSMAN

When it comes to shaping up your yard, look no further than CRAFTSMAN® to find the right equipment for you. Browse cordless and gas tools at CRAFTSMAN®. Take on large lawns and ...

Shop All Mowers | CRAFTSMAN

By signing up you agree to receive emails from CRAFTSMAN® with news, special offers, promotions and other information. You can unsubscribe at any time. See our Privacy Policy or ...

Customer Support | CRAFTSMAN

Find out more information about CRAFTSMAN® tools, warranty, parts, service, and more with our customer support resources.

42 in. Gas Zero-Turn Riding Mower (Z3200) | CRAFTSMAN

Transform your yard and mow up to 3 times faster than a walk behind*. The high-performance 42 in. Gas Zero-Turn Riding Mower (Z3200) features a powerful 547cc single-cylinder engine ...

V20* System Cordless Power Tools | CRAFTSMAN

Explore the CRAFTSMAN® V20* System of cordless power tools and products. The V20* System has the battery power, range and reliability to get your projects done.

"Explore the Craftsman Z5800 drive belt diagram in detail. Get clear insights and step-by-step guidance for maintenance. Learn more to keep your mower running smoothly!"

[Back to Home](#)