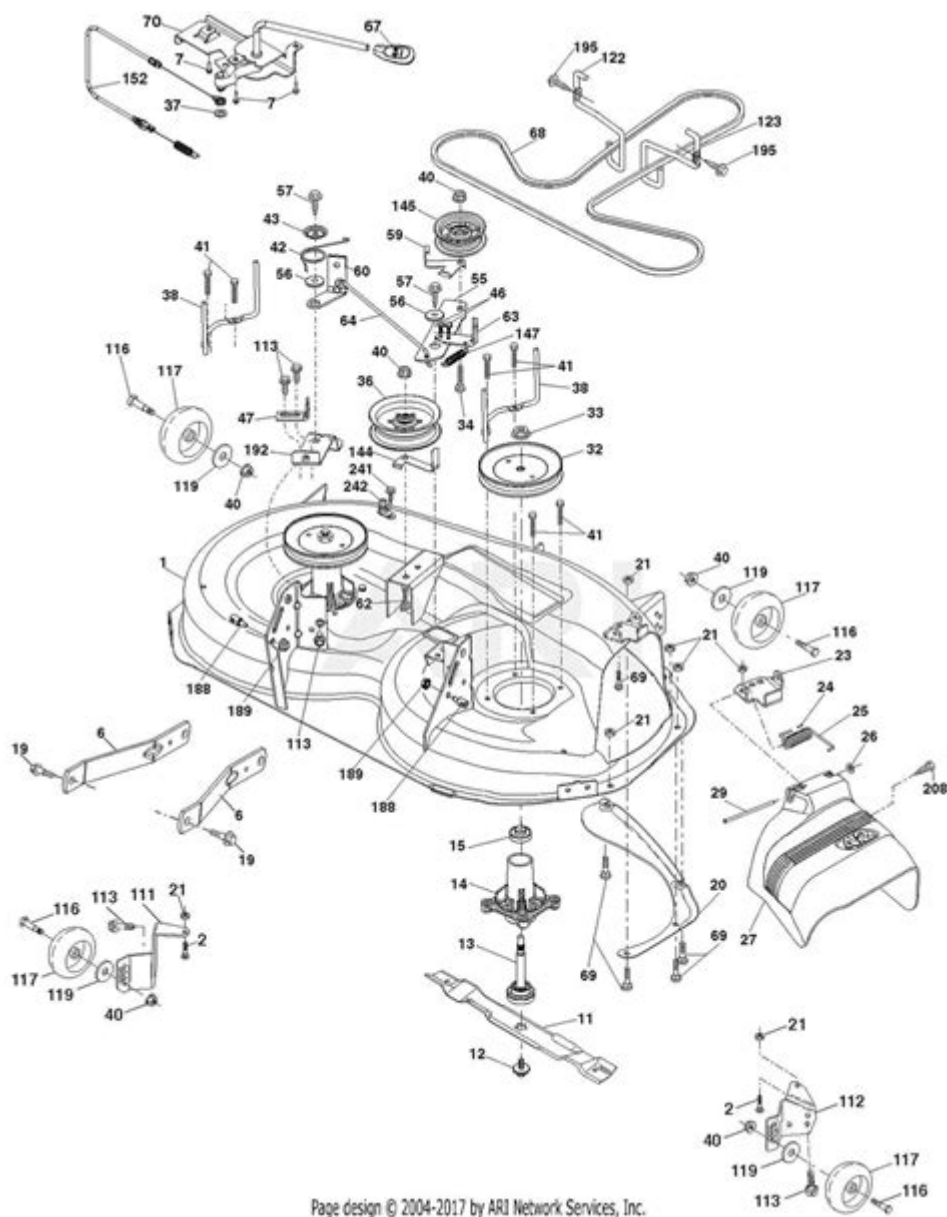


Craftsman Dlt 3000 Mower Deck Parts Diagram



Craftsman DLT 3000 Mower Deck Parts Diagram

When it comes to maintaining your Craftsman DLT 3000 lawn mower, understanding the mower deck parts diagram is crucial. This diagram serves as a visual guide to the various components of the mower deck, making it easier for both novice and experienced users to identify and replace parts as needed. In this comprehensive article, we will delve into the specifics of the Craftsman DLT 3000 mower deck, its parts, and how to maintain and troubleshoot these components.

Overview of the Craftsman DLT 3000

The Craftsman DLT 3000 is a robust lawn mower designed for durability and efficiency. With a powerful engine and a wide cutting deck, it is well-suited for residential and commercial use. The mower deck is a critical element of this machine, as it houses the blades and provides the cutting mechanism essential for lawn maintenance.

Understanding the Mower Deck

The mower deck is the lower portion of the lawn mower, and it plays a vital role in the overall functionality of the machine. Below are the primary functions of the mower deck:

- Cutting Grass: The most obvious function, the mower deck houses the blades that cut the grass to the desired height.
- Housing Components: It contains various components such as the pulleys, belts, and spindles that facilitate the movement of the blades.
- Protection: The deck protects the inner workings of the mower from debris and damage during operation.

Key Components of the Mower Deck

Understanding the various parts of the mower deck is essential for maintenance and repairs. Below is a breakdown of the key components involved:

1. Mower Blades

The mower blades are the primary cutting tools of the DLT 3000. They are typically made of high-strength steel and are designed to withstand heavy use. Regular sharpening and replacement are necessary to ensure efficient cutting.

2. Spindles

Spindles are the rotating shafts that hold the mower blades. Each spindle is attached to the deck and is powered by a belt. If a spindle becomes damaged or worn out, it can lead to uneven cutting.

3. Belts

Belts transfer power from the engine to the blades. The DLT 3000 typically has multiple belts, including:

- Deck Drive Belt: Connects the engine to the mower deck.
- Blade Drive Belt: Connects the spindles to the mower blades.

Over time, belts can wear out or become loose, requiring replacement for optimal performance.

4. Pulleys

Pulleys are used to guide and support the belts. Each spindle has a corresponding pulley, and proper alignment is crucial for efficient operation. If a pulley becomes misaligned, it can cause belt wear and affect cutting performance.

5. Deck Lift Mechanism

The deck lift mechanism allows the operator to adjust the height of the mower deck. This is essential for achieving the desired cut height and ensuring an even lawn.

6. Anti-Scalping Wheels

Anti-scalping wheels are designed to prevent the mower deck from digging into the ground when navigating uneven terrain. They help maintain an even cut and protect the blades from damage.

Mower Deck Parts Diagram

A parts diagram is an invaluable tool for understanding the layout and interconnectivity of the mower deck components. While we cannot provide a visual diagram here, we can describe its typical layout:

- Top Section: This usually displays the mower deck lift mechanism and adjustment points.
- Middle Section: Contains the spindles, belts, and pulleys. It often illustrates how the belts are routed and connected to the engine.
- Bottom Section: Includes the mower blades and anti-scalping wheels, often showing their positioning relative to the deck.

For a visual representation, consult the owner's manual or a parts supplier's website, where diagrams are often provided.

Maintenance Tips for the Mower Deck

Regular maintenance is essential for prolonging the life of your Craftsman DLT 3000 mower deck. Here are some maintenance tips:

1. Regular Inspection

- Check for any loose or damaged parts, including belts and spindles.

- Inspect the blades for dullness or damage. Sharpen or replace as necessary.

2. Cleaning the Deck

- After each use, remove grass clippings and debris from the deck to prevent corrosion and clumping.
- Use a garden hose or a scraper to clean the underside of the deck.

3. Lubrication

- Lubricate moving parts, including spindles and pulleys, according to the manufacturer's recommendations.
- Use a high-quality grease to ensure smooth operation.

4. Seasonal Maintenance

- Before the mowing season, check all belts for wear and replace them if needed.
- At the end of the season, perform a thorough cleaning and inspection to prepare for storage.

Troubleshooting Common Issues

Even the best-maintained mower decks can experience issues. Here are some common problems and their solutions:

1. Uneven Cutting

- Possible Causes: Dull blades, uneven tire pressure, or misaligned spindles.
- Solutions: Sharpen or replace blades, check tire pressure, and adjust spindle alignment.

2. Excessive Vibration

- Possible Causes: Worn or damaged blades, loose components, or unbalanced spindles.
- Solutions: Inspect and replace damaged blades, tighten loose parts, and ensure spindles are balanced.

3. Belt Slipping or Breaking

- Possible Causes: Worn belts, misaligned pulleys, or excessive tension.
- Solutions: Inspect belts for wear, adjust pulley alignment, and replace belts as necessary.

Where to Find Replacement Parts

Finding replacement parts for the Craftsman DLT 3000 mower deck is relatively easy. Here are some recommended sources:

- Local Hardware Stores: Many carry common mower parts.
- Online Retailers: Websites like Amazon, eBay, and specialized lawn care retailers usually have a wide selection of parts.
- Official Craftsman Dealers: For OEM parts, visiting an authorized Craftsman dealer can ensure you get the right components.

Conclusion

Understanding the Craftsman DLT 3000 mower deck parts diagram is essential for effective maintenance and troubleshooting. By familiarizing yourself with the key components and following a regular maintenance routine, you can ensure optimal performance and longevity of your mower. Whether you're looking to replace parts or simply want to understand how your mower works, the information provided here will serve as a valuable resource. With proper care, your Craftsman DLT 3000 will continue to provide reliable service for years to come.

Frequently Asked Questions

What is a Craftsman DLT 3000 mower deck parts diagram?

The Craftsman DLT 3000 mower deck parts diagram is a visual representation that shows the different components of the mower deck, including belts, blades, and housing, helping users identify parts for maintenance or replacement.

Where can I find the Craftsman DLT 3000 mower deck parts diagram?

You can find the Craftsman DLT 3000 mower deck parts diagram in the owner's manual, on the official Craftsman website, or through online retailers that sell mower parts.

Why is it important to have a parts diagram for the Craftsman DLT 3000 mower?

Having a parts diagram is important for understanding the layout of components, making repairs easier, ensuring proper assembly, and identifying the correct parts needed for maintenance or replacement.

What common parts are included in the Craftsman DLT 3000 mower deck parts diagram?

Common parts include the mower blades, belt, spindle assembly, deck lift mechanism, and various bolts and fasteners.

How do I read the Craftsman DLT 3000 mower deck parts diagram?

To read the parts diagram, locate the labeled parts, cross-reference them with the parts list, and use it to identify the specific components you need for repairs or replacements.

Can I order replacement parts for the Craftsman DLT 3000 directly from the parts diagram?

While you cannot order parts directly from the diagram, it helps you identify the correct part numbers, which you can then use to order from authorized dealers or online retailers.

Are there any online forums or communities for discussing Craftsman DLT 3000 mower deck issues?

Yes, there are several online forums and communities, such as Reddit or specialized lawn care forums, where users discuss issues related to the Craftsman DLT 3000 mower, including parts diagrams and troubleshooting.

Find other PDF article:

<https://soc.up.edu.ph/24-mark/pdf?docid=YII94-7941&title=generative-ai-for-data-analysis.pdf>

Craftsman Dlt 3000 Mower Deck Parts Diagram

Home | CRAFTSMAN®

Official website for CRAFTSMAN®. Explore power tools, outdoor equipment, hand tools, storage products and more.

Find A Retailer | CRAFTSMAN

Find a CRAFTSMAN® authorized provider near you and discover who sells CRAFTSMAN® tools online or in a retail store near you.

Shop Parts | CRAFTSMAN

Sometimes products wear down and need repair or maintenance. Fortunately, you have several options to fix your products with Craftsman Parts & Service.

Power Tools and Accessories | CRAFTSMAN

Browse high-performance power tools and accessories, including drivers, impacts, saws and more. Get the best quality for the job from Craftsman.

V20* 5.0AH Lithium Ion Battery | CRAFTSMAN

This V20* 5.0Ah Lithium Ion Battery is compatible with the CRAFTSMAN® V20* cordless power tool and outdoor tool lineup. The professional grade high performance cells provide improved ...

Home & Outdoor - Garden Tools, Mowers & More | CRAFTSMAN

When it comes to shaping up your yard, look no further than CRAFTSMAN® to find the right equipment for you. Browse cordless and gas tools at CRAFTSMAN®. Take on large lawns ...

[Shop All Mowers | CRAFTSMAN](#)

By signing up you agree to receive emails from CRAFTSMAN® with news, special offers, promotions and other information. You can unsubscribe at any time. See our Privacy Policy or ...

Customer Support | CRAFTSMAN

Find out more information about CRAFTSMAN® tools, warranty, parts, service, and more with our customer support resources.

42 in. Gas Zero-Turn Riding Mower (Z3200) | CRAFTSMAN

Transform your yard and mow up to 3 times faster than a walk behind*. The high-performance 42 in. Gas Zero-Turn Riding Mower (Z3200) features a powerful 547cc single-cylinder engine ...

[V20* System Cordless Power Tools | CRAFTSMAN](#)

Explore the CRAFTSMAN® V20* System of cordless power tools and products. The V20* System has the battery power, range and reliability to get your projects done.

[Home | CRAFTSMAN®](#)

Official website for CRAFTSMAN®. Explore power tools, outdoor equipment, hand tools, storage products and more.

[Find A Retailer | CRAFTSMAN](#)

Find a CRAFTSMAN® authorized provider near you and discover who sells CRAFTSMAN® tools online or in a retail ...

Shop Parts | CRAFTSMAN

Sometimes products wear down and need repair or maintenance. Fortunately, you have several options to fix your products with ...

[Power Tools and Accessories | CRAFTSMAN](#)

Browse high-performance power tools and accessories, including drivers, impacts, saws and more. Get the best quality for the job ...

[V20* 5.0AH Lithium Ion Battery | CRAFTSMAN](#)

This V20* 5.0Ah Lithium Ion Battery is compatible with the CRAFTSMAN® V20* cordless power tool and outdoor tool ...

Explore our detailed Craftsman DLT 3000 mower deck parts diagram. Find essential parts

[Back to Home](#)