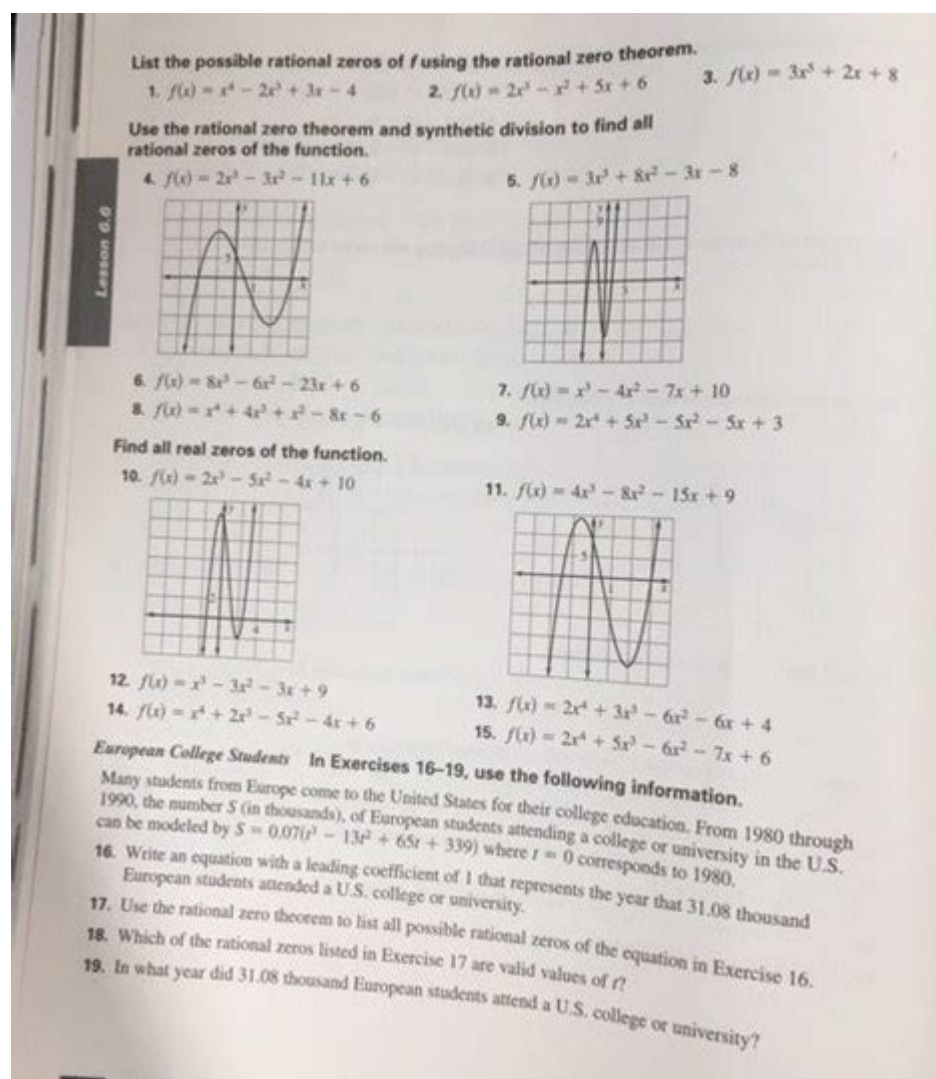


Cpm Algebra Teacher Manual Answers



cpm algebra teacher manual answers are essential resources for educators navigating the complexities of teaching algebra through the College Preparatory Mathematics (CPM) curriculum. The CPM curriculum is designed to foster deep understanding and engagement in mathematics, yet it can be challenging for teachers to provide the necessary support without comprehensive answers to the manual. This article will explore the importance of these answers, how they can be utilized effectively, and best practices for integrating them into your teaching strategies.

Understanding CPM Algebra

The College Preparatory Mathematics program is a unique educational framework that emphasizes collaborative learning and problem-solving. Unlike traditional math programs, CPM encourages students to explore concepts through discovery and group work.

The Structure of CPM Algebra

CPM Algebra courses are structured to build upon previous knowledge progressively. Each unit focuses on different mathematical concepts, often integrating various topics to enhance understanding. Key components include:

- **Conceptual Understanding:** Students are encouraged to grasp the 'why' behind mathematical processes.
- **Problem Solving:** The curriculum emphasizes solving real-world problems, which helps students apply their knowledge.
- **Collaboration:** Students work in groups to discuss strategies and solutions, fostering communication skills.
- **Variety of Resources:** CPM provides various materials, including textbooks, online tools, and teacher manuals.

The Role of Teacher Manuals in CPM

Teacher manuals are critical resources that guide educators through the CPM curriculum. They contain lesson plans, instructional strategies, and assessments. However, one of the most valuable aspects of these manuals is the answer key that provides solutions to problems presented in the student materials.

Benefits of Teacher Manual Answers

The answers provided in CPM algebra teacher manuals serve several essential functions:

1. **Guidance for Instruction:** They offer teachers a reference point to ensure they are teaching concepts correctly.
2. **Time-Saving Resource:** Teachers can quickly find solutions rather than solving each problem independently, allowing for increased focus on lesson delivery.
3. **Support for Differentiation:** Understanding the answers enables teachers to tailor their instruction to

meet diverse student needs.

4. **Assessment Preparation:** The manual answers help teachers create assessments that align with the curriculum and ensure students are ready for evaluations.

How to Use CPM Algebra Teacher Manual Answers Effectively

Using the teacher manual answers effectively requires a strategic approach. Here are some best practices:

1. Familiarize Yourself with the Curriculum

Before diving into the teacher manual answers, it is essential to understand the curriculum structure and objectives. Familiarizing yourself with the CPM philosophy will enable you to use the answers in a way that aligns with the overall learning goals.

2. Integrate Answers into Lesson Planning

When planning lessons, refer to the answers to identify key concepts that may need further emphasis. You can create lesson objectives based on the challenges students may face with specific problems.

3. Encourage Student Collaboration

Use the manual answers to facilitate collaborative learning. After students attempt problems, you can reveal the answers and encourage discussion about different approaches to reach the same solution. This not only reinforces learning but also boosts confidence.

4. Assess Understanding

Utilize the answers to develop formative assessments. For example, after a unit, create a quiz that includes similar problems to those in the manual, allowing you to gauge understanding and identify areas that may need review.

5. Provide Feedback

When reviewing student work, the teacher manual answers can guide your feedback. By comparing students' methods and solutions to the manual answers, you can offer more targeted and constructive feedback.

Challenges in Using CPM Algebra Teacher Manual Answers

Despite their many benefits, there can be challenges in using teacher manual answers effectively.

1. Over-Reliance on Answers

One significant risk is that educators may become overly reliant on the answers, which can limit their ability to develop their problem-solving skills. It is crucial to balance using the answers with personal understanding and creative problem-solving.

2. Misinterpretation of Solutions

Sometimes, the answers may not fully explain the 'why' behind a solution. Teachers must ensure they understand the rationale behind each answer to effectively communicate it to their students.

3. Keeping Students Engaged

In a collaborative environment, it can be tempting to give students the answers too quickly. Instead, encourage them to think critically and work through problems before revealing the solutions.

Conclusion

CPM algebra teacher manual answers are invaluable tools for educators aiming to deliver an effective and engaging algebra curriculum. By understanding their role, leveraging them in lesson planning, and encouraging student collaboration, teachers can enhance their instructional effectiveness. However, it is essential to navigate potential challenges by promoting critical thinking and maintaining a balance between guidance and independent problem-solving. Ultimately, when used thoughtfully, teacher manual answers can significantly improve both teaching practices and student learning outcomes in algebra.

Frequently Asked Questions

What is the CPM Algebra Teacher Manual and its purpose?

The CPM Algebra Teacher Manual is a resource designed for educators using the College Preparatory Mathematics curriculum. It provides detailed answers to problems, teaching strategies, and instructional support to help teachers effectively guide students through algebra concepts.

How can teachers access the CPM Algebra Teacher Manual answers?

Teachers can access the CPM Algebra Teacher Manual answers through the CPM Educational Program website, where they can find downloadable resources or through their school district if they have a subscription.

Are the answers in the CPM Algebra Teacher Manual comprehensive?

Yes, the answers in the CPM Algebra Teacher Manual are comprehensive, including detailed solutions and explanations for each problem to aid in understanding the concepts.

Is the CPM Algebra Teacher Manual useful for self-study?

While the CPM Algebra Teacher Manual is primarily designed for teachers, students may find it useful for self-study if they have access to it, as it provides in-depth solutions and instructional insights.

What grade levels does the CPM Algebra Teacher Manual cover?

The CPM Algebra Teacher Manual typically covers middle school and high school algebra courses, aligning with the curriculum for grades 7-12.

Can parents find help using the CPM Algebra Teacher Manual?

Yes, parents can use the CPM Algebra Teacher Manual to help their children with homework by understanding the solutions and teaching methods presented in the manual.

How often is the CPM Algebra Teacher Manual updated?

The CPM Algebra Teacher Manual is updated periodically to reflect changes in educational standards and to improve the curriculum based on teacher feedback.

What topics are included in the CPM Algebra Teacher Manual?

The CPM Algebra Teacher Manual includes topics such as linear equations, functions, polynomials, factoring, quadratic equations, and statistics.

Are there online resources associated with the CPM Algebra Teacher **Manual**?

Yes, there are online resources such as videos, interactive lessons, and additional practice problems that complement the CPM Algebra Teacher Manual.

How can new teachers benefit from the CPM Algebra Teacher Manual?

New teachers can benefit from the CPM Algebra Teacher Manual by using it as a guide for lesson planning, understanding the curriculum, and finding effective teaching strategies to engage students.

Find other PDF article:

<https://soc.up.edu.ph/01-text/pdf?docid=KM98-7351&title=1000-common-english-questions-and-answers.pdf>

Cpm Algebra Teacher Manual Answers

□□□□□□ **CPC** **CPM** **CPD** **CPT** **CPA** **CPS** □□ ...

CPM[] CPM[] CTR[]
[] ...

CPC, CPM, CTR -

CPM CTR CPC 2%

□□□□ *CPI*□*CPA*□*CPM*□*CPC* □□□□□□□□□□□□ ...

CPM 1000

CPM, CPC, CPA, CTR? -

CPM CPC CPA CTR 1 CPM Cost Per Mille CPM ...

CPC *CPM* *PPC* - *PPC*

Nov 2, 2024 · CPC CPM PPC PPC CPM CPA ...

"cpm" _____ - _____

Oct 23, 2024 · "cpm" "cpm" "cpm" cpm Cost Per Mille ...

cpm ? **cpm** ? **1 cpm** ? ...

Aug 9, 2024 · CPM Cost Per Mille 1000 1000 ...

cpm[] - []

Unlock the secrets to mastering CPM Algebra with our comprehensive teacher manual answers. Enhance your teaching skills today! Learn more for essential insights.

[Back to Home](#)