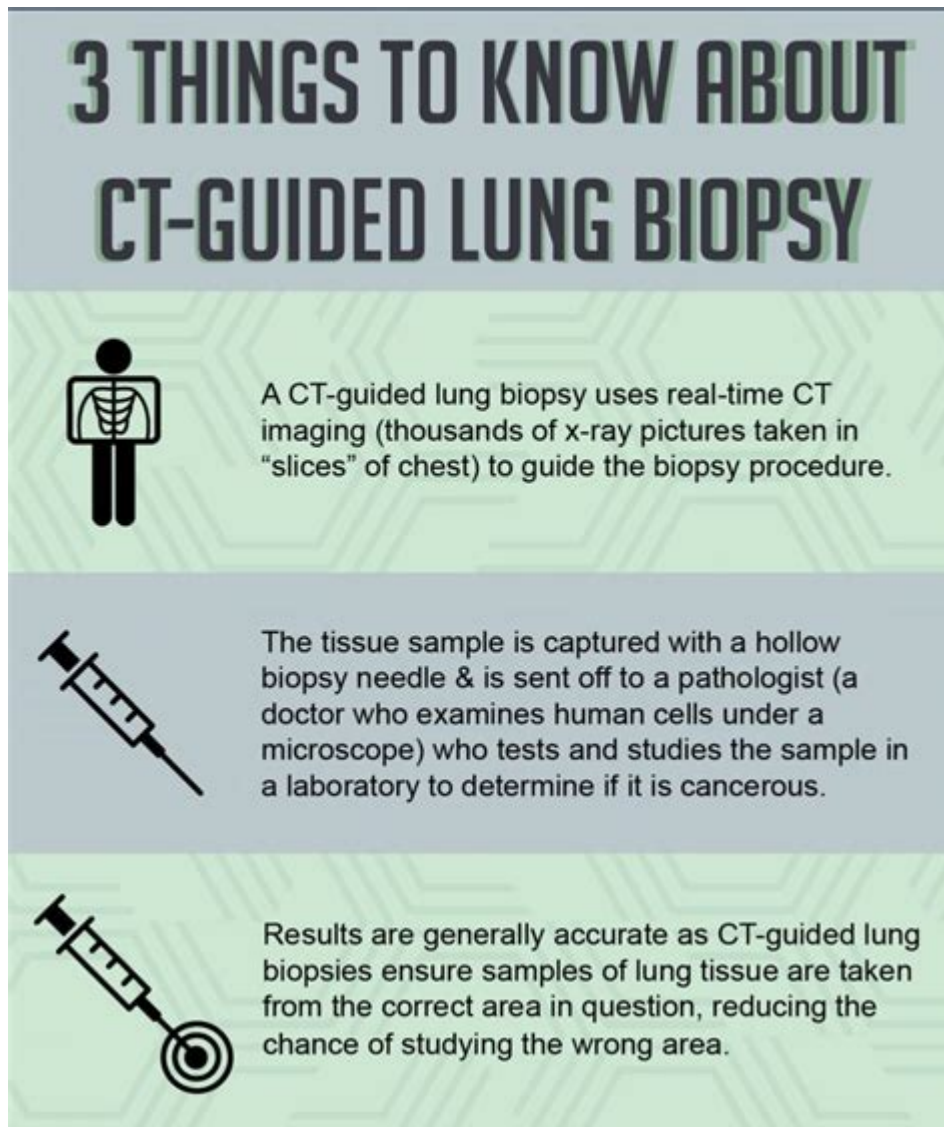


Ct Guided Biopsy Cpt Code



CT guided biopsy CPT code is a crucial aspect of diagnostic imaging and interventional procedures. It allows healthcare professionals to obtain tissue samples from a specific area of concern within the body, enhancing the accuracy of diagnoses related to various medical conditions, such as cancers and infections. The use of computed tomography (CT) for guidance ensures that biopsies are performed with precision, significantly improving patient outcomes. This article delves into the intricacies of CT guided biopsies, the relevant CPT codes, indications, procedures, and considerations involved.

Understanding CT Guided Biopsy

CT guided biopsy is a minimally invasive procedure that utilizes CT imaging technology to accurately locate and sample abnormal tissues. This technique is particularly valuable when lesions are located deep within the body, where traditional biopsy methods may be difficult or risky.

What is a CT Guided Biopsy?

A CT guided biopsy involves the following steps:

1. Preparation: The patient may need to change into a hospital gown and may be instructed to avoid certain medications before the procedure.
2. Imaging: A CT scan is performed to identify the location of the abnormal tissue.
3. Anesthesia: Local anesthesia is administered to minimize discomfort during the procedure.
4. Needle Insertion: A thin needle is carefully inserted through the skin and guided to the target area using real-time imaging.
5. Sample Collection: Tissue samples are collected for pathological examination.
6. Post-Procedure Care: The patient is monitored for any immediate complications before discharge.

Indications for a CT Guided Biopsy

CT guided biopsies are indicated for a variety of conditions, including:

- Tumors: To determine the nature (benign or malignant) of a mass.
- Infections: To identify pathogens in cases of abscesses or other infectious processes.
- Inflammatory Conditions: To assess conditions such as sarcoidosis or autoimmune diseases.
- Lymphadenopathy: To evaluate swollen lymph nodes for malignancy or infection.

CPT Codes for CT Guided Biopsy

The Current Procedural Terminology (CPT) codes for CT guided biopsies are essential for billing and insurance purposes. They classify the procedures based on various factors, including the site of the biopsy and the complexity of the intervention.

Common CPT Codes for CT Guided Biopsy

Here are some of the most frequently used CPT codes associated with CT guided biopsies:

- 77012: This code refers to the guidance for needle placement in the soft tissue or the spine using fluoroscopic imaging. While it's not exclusively for CT guided procedures, it is relevant for imaging guidance.
- 49180: This code is used for the percutaneous needle biopsy of an abdominal organ or mass.
- 32505: This code is for a needle biopsy of the lung, specifically for the collection of tissue samples from lung lesions.
- 10005: This code applies to fine needle aspiration (FNA) biopsies when performed with imaging guidance.

CPT codes may vary based on the specific characteristics of the biopsy, so it is essential for healthcare providers to select the appropriate code that accurately reflects the procedure performed.

Modifiers and Additional Codes

In some cases, additional modifiers or codes may be necessary to provide further detail regarding the procedure. Common modifiers include:

- -26: Professional component
- -TC: Technical component
- -59: Distinct procedural service

These modifiers help ensure that billing is accurate and reflects the services provided.

Preparing for a CT Guided Biopsy

Proper preparation is critical for a successful CT guided biopsy. Both the healthcare team and the patient must be aligned regarding the procedure.

Pre-Procedure Steps for Patients

Patients should follow these guidelines prior to their biopsy:

1. Consultation: Discuss the procedure with the physician, including risks and benefits.
2. Medical History Review: Provide a complete medical history, including allergies and current medications.
3. Fasting: Follow any dietary restrictions, particularly if sedation is planned.
4. Transportation: Arrange for someone to drive home after the procedure, as sedation may be used.

Healthcare Team Preparations

Healthcare providers should ensure the following:

- Equipment Readiness: Ensure all necessary equipment, including CT imaging machines and biopsy tools, are in working order.
- Sterility: Prepare a sterile field to minimize infection risk.
- Staff Training: Confirm that all staff involved are trained in CT guided procedures and emergency protocols.

Post-Procedure Care and Considerations

After the CT guided biopsy, patients require proper monitoring and care to minimize complications.

Immediate Post-Procedure Care

Patients will typically be monitored for:

- Vital Signs: Regular checks of heart rate, blood pressure, and oxygen levels.
- Site Inspection: Checking the biopsy site for signs of bleeding or infection.
- Pain Management: Providing medications as necessary to manage discomfort.

Long-Term Considerations

Following the biopsy, patients should be aware of:

- Follow-Up Appointments: Scheduling follow-ups for results and further management if required.
- Symptoms to Monitor: Awareness of any unusual symptoms, such as increased pain, fever, or drainage from the biopsy site, which should prompt immediate medical attention.

Risks and Complications of CT Guided Biopsy

While CT guided biopsies are generally safe, potential risks and complications include:

- Bleeding: Minor bleeding is common, but significant hemorrhage can occur in rare cases.
- Infection: Any invasive procedure carries a risk of infection at the biopsy site.
- Organ Injury: There is a slight risk of damaging surrounding organs or tissues during needle insertion.

Mitigating Risks

To reduce the likelihood of complications, healthcare providers should:

- Conduct thorough imaging and planning before the procedure.
- Use ultrasound or fluoroscopic guidance as necessary.
- Ensure proper sterile techniques throughout the biopsy.

Conclusion

The CT guided biopsy CPT code is a vital tool in modern medicine, facilitating accurate diagnosis and management of various medical conditions. Understanding the procedure, its indications, and the associated coding is crucial for healthcare professionals involved in patient care and billing. As technology advances, the efficacy and safety of CT guided biopsies will continue to improve, ultimately benefiting patient outcomes and enhancing the quality of care. With proper preparation, execution, and follow-up, CT guided biopsies can provide essential insights into a patient's health, paving the way for effective treatment plans.

Frequently Asked Questions

What is the CPT code for a CT guided biopsy?

The CPT code for a CT guided biopsy typically falls under the range of 77012 for imaging guidance and the specific code for the biopsy procedure itself, which can vary based on the site and technique used.

How do I determine the correct CPT code for a CT guided biopsy?

To determine the correct CPT code for a CT guided biopsy, refer to the specific anatomical site, the type of biopsy (e.g., fine needle aspiration, core needle biopsy), and any imaging guidance used. Consulting the latest CPT codebook or coding guidelines is recommended.

What are the common anatomical sites for CT guided biopsies and their corresponding CPT codes?

Common anatomical sites for CT guided biopsies include the lung (e.g., CPT 32405), liver (e.g., CPT 47000), and kidney (e.g., CPT 50200). Each site has specific codes, so it's important to verify them based on the procedure performed.

Are there additional modifiers that need to be applied to the CPT code for a CT guided biopsy?

Yes, additional modifiers may be necessary when billing for a CT guided biopsy, such as modifier 26 for professional components or modifier 59 to indicate distinct procedural services, depending on the circumstances.

What documentation is required to support the CPT code for a CT guided biopsy?

Documentation required includes the physician's order, patient consent, imaging reports, procedure notes detailing the technique used, and any relevant clinical findings that justify the biopsy.

How often are CPT codes for CT guided biopsy updated?

CPT codes for CT guided biopsies are typically updated annually, with revisions made by the American Medical Association. It is important to stay current with the annual updates to ensure accurate coding.

What is the difference between a CT guided biopsy and other types of biopsies?

The main difference is that a CT guided biopsy uses computed tomography imaging to precisely locate the biopsy site, whereas other types may use ultrasound or be performed through open surgical methods without imaging guidance.

<https://soc.up.edu.ph/33-gist/pdf?docid=Oth52-9777&title=interview-questions-for-project-managers.pdf>

MRCT

CT -

 ct ...

CT

CT CE WE WC CC

CTMRI

gctlbzognoztdwt

CT *CE* *WE* *WC* *CC* □ □ □ □ □ □ □ □ □ □

CT CE WE CC

□□□□ CT □□□□ CT □□□□ - □□

[illegible]

MRCT

Dec 11, 2024 · CT"CT 400X200"400

200 ...

CT -
CT computed tomography CT X CT X CT ...

ct ...
2 2 ct ...

CT -
Oct 20, 2020 · CT CT CT CT 0.75mm ...

CT CE WE WC CC
Sep 22, 2023 · CT CE WE WC: CC ...

CT **MRI** ...
Jan 30, 2025 · CT MRI ** “ ” ...

gctlbognoztdwt_
gctlbognoztdwt ggram ct carat karat lb pound oz ounce ...

CT CE WE WC CC_
Aug 12, 2024 · 1. “CT” 2. “CE” 3. “WE” ...

CT CE WE CC_
Sep 15, 2024 · CT CE WE CC CT ...

CT **CT** -
Nov 15, 2022 · CT 6 CT CT CT

Discover the essential CT guided biopsy CPT code and its applications in medical billing. Learn more about accurate coding practices for optimal reimbursement.

[Back to Home](#)