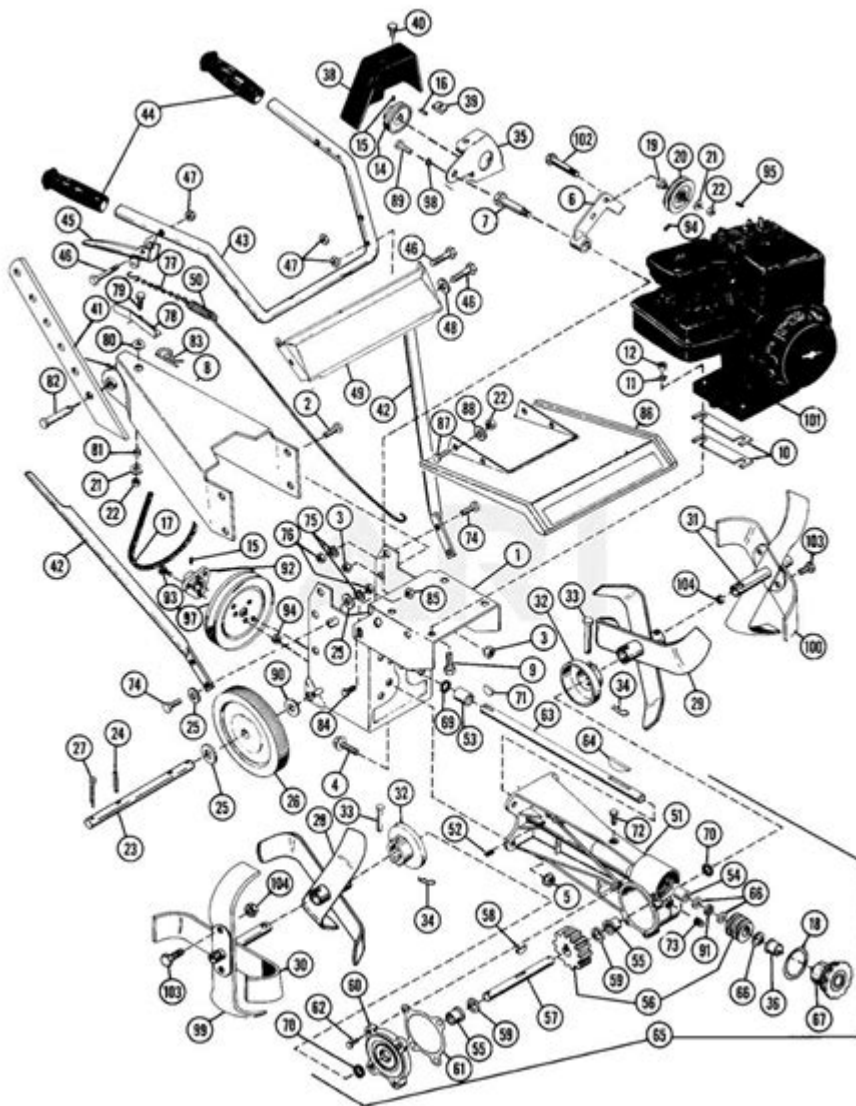


# County Line Tiller Manual



Page design © 2004-2017 by ARI Network Services, Inc.

**County line tiller manual** is an essential resource for anyone looking to utilize this piece of equipment effectively and safely. A tiller is a powerful tool used for breaking up soil, preparing garden beds, and mixing in amendments like compost or fertilizers. The County Line Tiller is known for its durability and efficiency, making it a popular choice among gardeners and landscapers. This article will provide an in-depth look at the County Line Tiller, including its features, operation, maintenance, and troubleshooting tips.

## Understanding the County Line Tiller

The County Line Tiller is designed to make soil preparation easier and more efficient. It comes in various sizes and configurations, suitable for different tractors and gardening needs. Here are some of the key features:

# Features of the County Line Tiller

- Durable Construction: Made from high-quality materials to withstand heavy use.
- Adjustable Tilling Depth: Allows users to set the depth for optimal soil preparation.
- Heavy-Duty Tines: Equipped with robust tines that can break up hard soil and mix in organic material.
- Ease of Attachment: Designed to be easily attached to most tractors, enhancing its usability.
- Wide Tilling Width: Available in various widths to cover more ground in a single pass.

# Operating the County Line Tiller

To make the most out of your County Line Tiller, it's crucial to understand how to operate it safely and efficiently. Here are some steps to follow:

## Preparation Before Use

1. Read the Manual: Always refer to the County Line Tiller manual for specific instructions related to your model.
2. Inspect the Equipment: Check for any signs of wear or damage before use.
3. Check Compatibility: Ensure that your tractor is compatible with the tiller in terms of horsepower and attachment points.
4. Clear the Area: Remove any debris, large rocks, or other obstacles from the area you plan to till.

## Steps for Operating the Tiller

1. Attach the Tiller: Securely attach the tiller to the tractor according to the manual's instructions.
2. Set the Tilling Depth: Adjust the tiller to your desired depth. Typically, a depth of 4 to 6 inches is sufficient for most gardening tasks.
3. Start the Tractor: Begin by starting the tractor and engaging the PTO (Power Take-Off) to drive the tiller.
4. Begin Tilling: Slowly walk the tractor forward, allowing the tiller to penetrate the soil. Maintain a consistent speed for even tilling.
5. Make Overlapping Passes: If necessary, overlap each pass slightly to ensure thorough coverage of the area.

# Maintenance of the County Line Tiller

Regular maintenance is crucial for keeping your County Line Tiller in optimal working condition. Following a maintenance schedule can extend the life of your equipment and

enhance its performance.

## **Routine Maintenance Tasks**

- **Clean After Use:** Remove soil and debris from the tiller after every use to prevent corrosion and rust.
- **Check Tines:** Inspect the tines for wear and replace them if they are damaged or excessively worn.
- **Grease Moving Parts:** Lubricate all moving parts according to the manual's recommendations to ensure smooth operation.
- **Inspect Belts and Chains:** Check for signs of wear on belts and chains. Replace them if necessary.
- **Check Oil Levels:** Regularly inspect and change the oil in the gear case as recommended in the manual.

## **Seasonal Maintenance Tips**

- **End-of-Season Care:** Before storing for the season, clean the tiller thoroughly and lubricate all parts.
- **Winter Storage:** Store the tiller in a dry, sheltered location to protect it from the elements.
- **Spring Check-Up:** Before the first use of the season, perform a thorough inspection and maintenance check.

## **Troubleshooting Common Issues**

Even with proper maintenance, you may encounter issues while operating your County Line Tiller. Here are some common problems and their solutions:

### **Common Problems and Solutions**

- **Tiller Won't Start:**
  - **Check Power Source:** Ensure that the tractor is properly started and the PTO is engaged.
  - **Inspect Connections:** Look for any loose or damaged connections.
- **Uneven Tilling:**
  - **Adjust Depth Settings:** Ensure the tilling depth is set correctly.
  - **Check Tine Condition:** Worn or damaged tines can lead to uneven tilling.
- **Tiller Stalls:**
  - **Inspect for Debris:** Clear any debris that may be wrapped around the tines or other moving parts.
  - **Check Engine Power:** Make sure the tractor is providing adequate power to the tiller.

- Excessive Vibration:
- Balance the Tiller: Ensure it is properly attached and balanced when in operation.
- Check for Loose Parts: Tighten any loose bolts or connectors.

## Conclusion

The **County Line Tiller manual** is a valuable tool that provides essential information for users to operate, maintain, and troubleshoot their tillers effectively. By understanding the features, following the operating procedures, performing regular maintenance, and being aware of common issues, you can ensure that your tiller remains in excellent working condition for years to come. Whether you are preparing a garden bed or working on a larger landscaping project, the County Line Tiller can make your tasks more manageable and efficient. Always remember to prioritize safety by wearing appropriate gear and following the guidelines provided in the manual. Happy tilling!

## Frequently Asked Questions

### What is a County Line tiller used for?

A County Line tiller is primarily used for breaking up soil, mixing in compost or fertilizer, and preparing garden beds for planting.

### How do I properly maintain my County Line tiller?

Regular maintenance includes checking and changing the oil, cleaning the air filter, inspecting the tines for wear, and ensuring all bolts and connections are tight.

### Where can I find the manual for my County Line tiller?

The manual for your County Line tiller can usually be found on the manufacturer's website, or you can contact your local dealer for a physical copy.

### What safety precautions should I take when using a County Line tiller?

Always wear safety goggles, gloves, and sturdy footwear. Ensure that the area is clear of rocks and debris before tilling, and never operate the tiller near children or pets.

### Can I use a County Line tiller for rocky soil?

While a County Line tiller can handle some rocky soil, it's advisable to remove larger rocks and debris beforehand to prevent damage to the tiller.

### What type of fuel does a County Line tiller require?

Most County Line tillers run on regular gasoline, but it's essential to check your specific model's manual for the correct fuel type and any necessary fuel-to-oil ratios.

# How deep can a County Line tiller till the soil?

The tilling depth of a County Line tiller typically ranges from 6 to 10 inches, depending on the model and the settings used.

Find other PDF article:  
<https://soc.up.edu.ph/21-brief/files?dataid=TVu83-9375&title=example-of-a-short-story-analysis.pdf>

## County Line Tiller Manual

county city -   
Richardson, Texas, US county City   
3 ...

18354171084 1   
 ...

city,county town,state   
Feb 25, 2010 · city downtown   
country town ...

CPU2025 CPU   
Jun 5, 2025 · 24 CPU46 AMD   
 ...

? -   
18 354171084   
 ...

word -   
word 01   
 ...

**County and region: Learn the difference between these synonyms ...**  
County and region are both words used to describe a geographic area, but they have different meanings and connotations. A county is a specific administrative division of a state or country, ...

2320312   
 ...

-   
DUNS DUNS DUNS Data Universal Numbering System   
9 ...

county,city -

county,city - " " county,city ...

county,city -

county,city - Richardson, Texas, US county,city ...

county,city -

county,city - 18 3 54 17 108 4 1 ...

city,county,town,state -

Feb 25, 2010 · city,county,town,state - downtown country,town ...

CPU 2025 CPU

Jun 5, 2025 · CPU 2 4 CPU 4 6 AMD ...

county,city -

county,city - 18 3 54 17 108 4 ...

word -

word 01 ...

County and region: Learn the difference between these synonyms ...

County and region are both words used to describe a geographic area, but they have different meanings and connotations. A county is a specific administrative division of a state or country, ...

county,city -

county,city - 23 20 3 12 ...

county,city -

county,city - DUNS Data Universal Numbering System 9 ...

county,city -

county,city - " " ...

Get the most out of your equipment with the County Line tiller manual. Find detailed instructions and tips to enhance your tilling experience. Learn more!

[Back to Home](#)