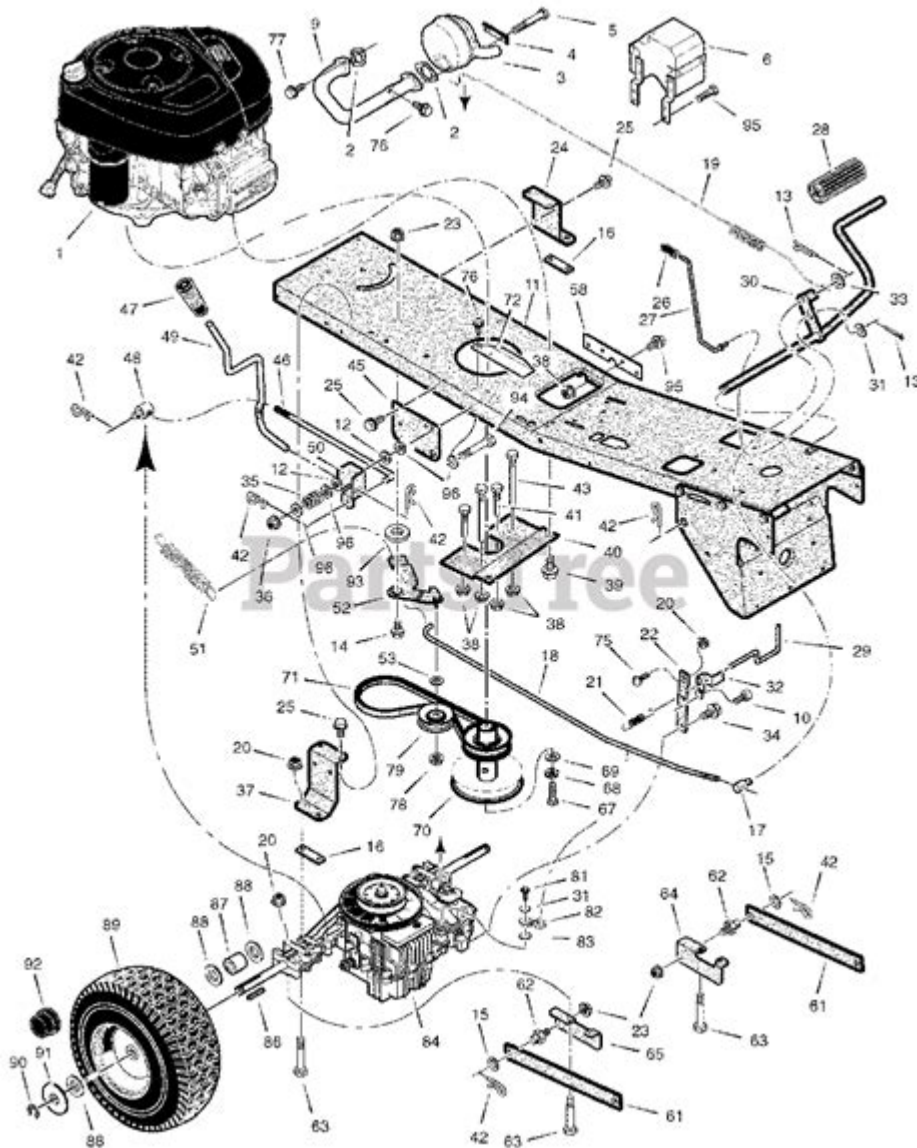


Craftsman Dls 3500 Parts Manual



Craftsman DLS 3500 parts manual is an essential resource for anyone who owns or operates this reliable lawn tractor. Understanding the parts of your DLS 3500 can help ensure that you maintain it properly, troubleshoot issues effectively, and ultimately extend its lifespan. In this article, we will explore the components of the Craftsman DLS 3500, the significance of having a parts manual, and tips for maintaining your lawn tractor.

Overview of the Craftsman DLS 3500

The Craftsman DLS 3500 is a versatile lawn tractor designed for homeowners who want a reliable machine for mowing their lawns. With its powerful engine, robust construction, and user-friendly features, the DLS 3500 has become a popular choice among gardening enthusiasts. However, like any piece of

machinery, it requires regular maintenance and occasional repairs.

Key Features of the Craftsman DLS 3500

1. **Powerful Engine:** The DLS 3500 is equipped with a robust engine that provides ample power for mowing, towing, and other yard tasks.
2. **Comfortable Seating:** The tractor features an ergonomic seat designed for comfort during longer mowing sessions.
3. **Versatile Attachments:** This model supports various attachments, including baggers, snow blades, and carts, making it adaptable for different seasonal needs.
4. **Easy Maneuverability:** With its responsive steering and compact design, navigating tight spaces is a breeze.

The Importance of the Craftsman DLS 3500 Parts Manual

Having access to a comprehensive parts manual for your Craftsman DLS 3500 is invaluable for several reasons:

1. Accurate Identification of Parts

The parts manual provides detailed diagrams and descriptions of each component. This allows you to accurately identify the parts that require maintenance or replacement.

2. Troubleshooting Common Issues

The manual often includes common troubleshooting tips, helping you diagnose issues without the need for professional assistance. This can save you both time and money.

3. Maintenance Schedules

Regular maintenance is critical for the longevity of your lawn tractor. The parts manual typically outlines recommended maintenance schedules for various components, ensuring you keep your machine in optimal condition.

4. Ordering Replacement Parts

When you need to order replacement parts, having the parts manual at hand makes the process much easier. You can refer to the part numbers and descriptions to ensure you get the right components.

Key Components of the Craftsman DLS 3500

Understanding the key components of the Craftsman DLS 3500 can help you better utilize the parts manual. Here are some of the essential parts:

1. Engine

The engine is the heart of the DLS 3500, providing the necessary power for all its functions. Regular checks on oil levels, filters, and spark plugs are essential for optimal performance.

2. Transmission

The transmission system controls the speed and power transfer from the engine to the wheels. It's important to ensure the transmission fluid is at proper levels and to replace any worn belts.

3. Cutting Deck

The cutting deck is responsible for the lawn mowing task. Ensure that the blades are sharp, and check for any debris buildup that can hinder performance.

4. Tires

Proper tire maintenance is crucial for traction and maneuverability. Regularly check tire pressure and tread wear to ensure safe and effective operation.

5. Battery

The battery powers the electrical components of the tractor. Regularly inspect the battery for corrosion and ensure it holds a charge.

Common Repairs and Replacements

Even with regular maintenance, certain parts may need to be repaired or replaced over time. Here are some common repairs associated with the Craftsman DLS 3500:

- **Blade Replacement:** Over time, the cutting blades can become dull or damaged, necessitating replacement.
- **Belt Replacement:** The drive and mower belts can wear out, requiring timely replacement to avoid malfunction.
- **Battery Replacement:** If the battery is not holding a charge, it may need replacement, especially after a few years of use.
- **Filter Changes:** Air and oil filters should be changed regularly to maintain engine efficiency.

Tips for Maintaining Your Craftsman DLS 3500

To keep your Craftsman DLS 3500 running smoothly, consider the following maintenance tips:

1. Regular Cleaning

After each use, clean the cutting deck and the surrounding areas to prevent grass buildup. This helps prevent rust and ensures optimal cutting performance.

2. Check Fluid Levels

Regularly check and refill oil, transmission fluid, and coolant levels. This is crucial for the engine and transmission's health.

3. Inspect Belts and Hoses

Periodically inspect belts and hoses for signs of wear and tear. Replace any components that appear frayed or damaged.

4. Store Properly

During the off-season, store your DLS 3500 in a dry, covered area. Consider using a cover to protect it from dust and debris.

5. Follow the Manual

Always refer to the Craftsman DLS 3500 parts manual for specific maintenance schedules and procedures. Following the manufacturer's guidelines will ensure your machine operates efficiently.

Where to Find the Craftsman DLS 3500 Parts Manual

If you do not have a copy of the Craftsman DLS 3500 parts manual, there are several ways to obtain one:

- **Official Craftsman Website:** Visit the Craftsman website, where you can often find digital copies of manuals.
- **Local Dealers:** Contact local Craftsman dealers or service centers for a printed version.
- **Online Forums:** Many gardening and DIY forums have sections dedicated to manuals and parts for various models.

Conclusion

In conclusion, the **Craftsman DLS 3500 parts manual** is an essential tool for any owner of this lawn tractor. Understanding its components, following maintenance tips, and knowing where to find the manual can significantly enhance your experience and prolong the life of your machine. Whether you're troubleshooting a problem or simply performing routine upkeep, having this resource at your fingertips will make all the difference in maintaining a healthy and efficient lawn tractor.

Frequently Asked Questions

What is the purpose of the Craftsman DLS 3500 parts manual?

The Craftsman DLS 3500 parts manual provides detailed information on the parts and components of the DLS 3500 model, including diagrams, part numbers, and assembly instructions to assist in repairs and maintenance.

Where can I find the Craftsman DLS 3500 parts manual online?

The Craftsman DLS 3500 parts manual can often be found on the official Craftsman website, or on websites like ManualsLib and eBay where users sell or share PDF versions of manuals.

Are replacement parts for the Craftsman DLS 3500 readily available?

Yes, replacement parts for the Craftsman DLS 3500 are generally available through authorized Craftsman dealers, online retailers, and platforms like Amazon and eBay.

How can I identify the specific parts I need from the Craftsman DLS 3500 parts manual?

To identify specific parts, refer to the exploded diagrams in the manual which label each part with corresponding numbers. Use these numbers to find the parts you need either online or at a local dealer.

Is there a digital version of the Craftsman DLS 3500 parts manual?

Yes, many users have scanned and uploaded digital versions of the Craftsman DLS 3500 parts manual, which can be accessed for free or purchased online.

What should I do if I can't find the part I need in the Craftsman DLS 3500 parts manual?

If you can't find the part in the manual, consider contacting Craftsman customer service or visiting a local repair shop for assistance. They may help you identify the part and suggest alternatives.

Find other PDF article:

<https://soc.up.edu.ph/37-lead/files?ID=auE02-3636&title=letter-a-preschool-worksheet.pdf>

Craftsman Dls 3500 Parts Manual

Home | CRAFTSMAN®

Official website for CRAFTSMAN®. Explore power tools, outdoor equipment, hand tools, storage products and more.

Find A Retailer | CRAFTSMAN

Find a CRAFTSMAN® authorized provider near you and discover who sells CRAFTSMAN® tools online or in a retail store near you.

Shop Parts | CRAFTSMAN

Sometimes products wear down and need repair or maintenance. Fortunately, you have several options to fix your products with Craftsman Parts & Service.

Power Tools and Accessories | CRAFTSMAN

Browse high-performance power tools and accessories, including drivers, impacts, saws and more. Get the best quality for the job from Craftsman.

V20* 5.0AH Lithium Ion Battery | CRAFTSMAN

This V20* 5.0Ah Lithium Ion Battery is compatible with the CRAFTSMAN® V20* cordless power tool and outdoor tool lineup. The professional grade high performance cells provide improved power and a longer cycle life.

Home & Outdoor - Garden Tools, Mowers & More | CRAFTSMAN

When it comes to shaping up your yard, look no further than CRAFTSMAN® to find the right equipment for you. Browse cordless and gas tools at CRAFTSMAN®. Take on large lawns and rough terrain with CRAFTSMAN® riding lawn mowers designed to ...

Shop All Mowers | CRAFTSMAN

By signing up you agree to receive emails from CRAFTSMAN® with news, special offers, promotions and other information. You can unsubscribe at any time. See our Privacy Policy or ...

Customer Support | CRAFTSMAN

Find out more information about CRAFTSMAN® tools, warranty, parts, service, and more with our customer support resources.

42 in. Gas Zero-Turn Riding Mower (Z3200) | CRAFTSMAN

Transform your yard and mow up to 3 times faster than a walk behind*. The high-performance 42 in. Gas Zero-Turn Riding Mower (Z3200) features a powerful 547cc single-cylinder engine designed for consistent mowing performance in thick, wet, heavy grass. Ideal for yards up to 2 acres, the 42 in. steel deck, robust steel frame, and dual hydrostatic transmissions offer ...

V20* System Cordless Power Tools | CRAFTSMAN

Explore the CRAFTSMAN® V20* System of cordless power tools and products. The V20* System has the battery power, range and reliability to get your projects done.

Home | CRAFTSMAN®

Official website for CRAFTSMAN®. Explore power tools, outdoor equipment, hand tools, storage products and more.

Find A Retailer | CRAFTSMAN

Find a CRAFTSMAN® authorized provider near you and discover who sells CRAFTSMAN® tools online or in a retail store near you.

Shop Parts | CRAFTSMAN

Sometimes products wear down and need repair or maintenance. Fortunately, you have several options to fix your products with Craftsman Parts & Service.

Power Tools and Accessories | CRAFTSMAN

Browse high-performance power tools and accessories, including drivers, impacts, saws and more. Get the best quality for the job from Craftsman.

V20 5.0AH Lithium Ion Battery | CRAFTSMAN*

This V20* 5.0Ah Lithium Ion Battery is compatible with the CRAFTSMAN® V20* cordless power tool and outdoor tool lineup. The professional grade high performance cells provide improved ...

Home & Outdoor - Garden Tools, Mowers & More | CRAFTSMAN

When it comes to shaping up your yard, look no further than CRAFTSMAN® to find the right equipment for you. Browse cordless and gas tools at CRAFTSMAN®. Take on large lawns ...

Shop All Mowers | CRAFTSMAN

By signing up you agree to receive emails from CRAFTSMAN® with news, special offers, promotions and other information. You can unsubscribe at any time. See our Privacy Policy or ...

Customer Support | CRAFTSMAN

Find out more information about CRAFTSMAN® tools, warranty, parts, service, and more with our customer support resources.

42 in. Gas Zero-Turn Riding Mower (Z3200) | CRAFTSMAN

Transform your yard and mow up to 3 times faster than a walk behind*. The high-performance 42 in. Gas Zero-Turn Riding Mower (Z3200) features a powerful 547cc single-cylinder engine ...

V20* System Cordless Power Tools | CRAFTSMAN

Explore the CRAFTSMAN® V20* System of cordless power tools and products. The V20* System has the battery power, range and reliability to get your projects done.

Find the complete Craftsman DLS 3500 parts manual for easy repairs and maintenance. Access detailed diagrams and parts lists. Learn more to keep your tools running smoothly!

[Back to Home](#)