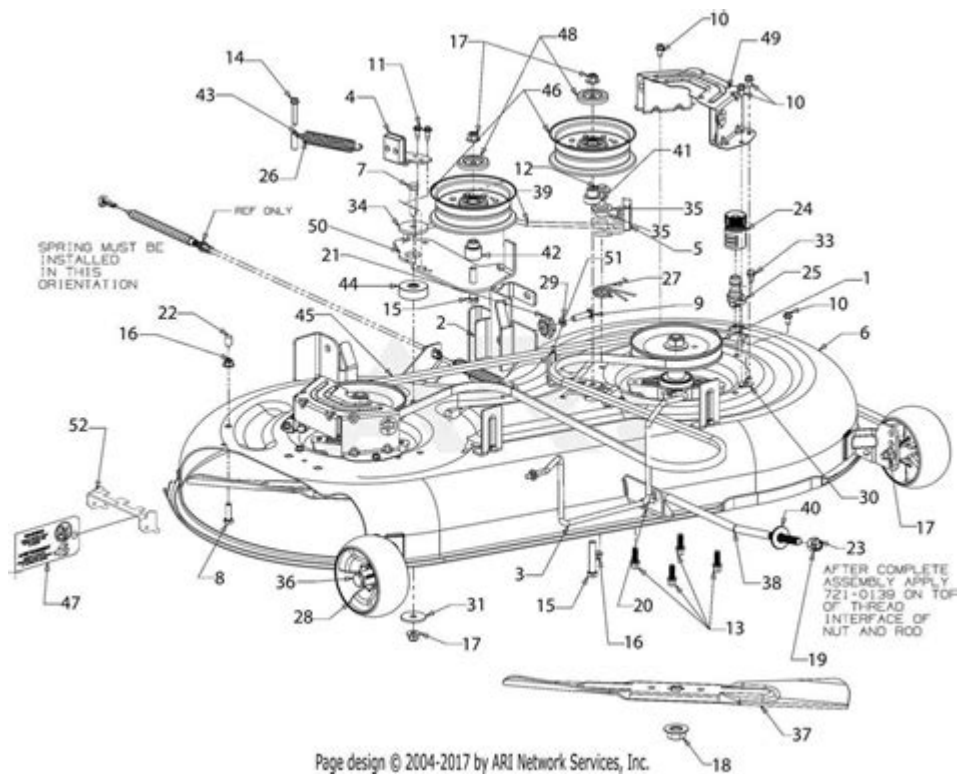


Craftsman T3000 Parts Diagram



Craftsman T3000 parts diagram is an essential tool for anyone looking to maintain, repair, or modify their Craftsman T3000 lawn tractor. Understanding the parts diagram can greatly enhance your ability to identify specific components, troubleshoot issues, and even perform upgrades. This article will delve into the various parts of the Craftsman T3000, explain their functions, and provide insights into how to use the parts diagram effectively. By the end of this article, you will have a comprehensive understanding of the T3000's anatomy and how to navigate its parts diagram.

Overview of the Craftsman T3000

The Craftsman T3000 is a robust and reliable lawn tractor designed for homeowners who require a durable and efficient machine for maintaining their lawns. With features that include a powerful engine, a comfortable seat, and easy maneuverability, it has become a popular choice among gardening enthusiasts. However, like any machinery, it requires regular maintenance and occasional repairs. Familiarity with the parts diagram can make these tasks significantly easier.

Key Features of the Craftsman T3000

- **Engine:** The T3000 typically comes equipped with a powerful engine that provides ample torque for tackling tough terrains.
- **Transmission:** It features a smooth automatic transmission, which allows for effortless

operation.

- Cutting Deck: The cutting deck is adjustable, allowing users to select their desired grass height.
- Comfort: With an ergonomic seat and easy-to-reach controls, the T3000 prioritizes user comfort during operation.
- Storage: Many models include storage compartments for tools and personal items.

Understanding the Parts Diagram

A parts diagram visually represents the various components of the Craftsman T3000. It can be a complex illustration, but understanding its layout is crucial for effective maintenance and repairs. The parts diagram is typically segmented into sections that correspond to different parts of the tractor.

Reading the Parts Diagram

1. Identify Sections: The diagram will be divided into sections such as the engine, transmission, cutting deck, and chassis.
2. Component Labels: Each part will be labeled with a unique number that corresponds to a parts list.
3. Exploded View: The exploded view allows you to see how parts fit together, which is invaluable when disassembling or reassembling components.
4. Parts List: This section typically provides a description, part number, and sometimes the price of each component.

Common Components and Their Functions

Here are some of the key components you will find in the Craftsman T3000 parts diagram:

- Engine:
 - Provides power to the tractor.
 - Includes parts like the carburetor, ignition coil, and air filter.
- Transmission:
 - Transmits power from the engine to the wheels.
 - Key parts include the drive belt, pulley, and gearbox.
- Cutting Deck:
 - Houses the blades that cut the grass.
 - Components include the deck shell, blades, and spindle assembly.
- Chassis:
 - The frame that supports the tractor.
 - Includes wheels, tires, and support brackets.

- Steering Mechanism:
 - Allows for maneuverability.
 - Comprised of parts like the steering wheel, column, and tie rods.
- Electrical System:
 - Powers lights and the ignition system.
 - Key components include the battery, wiring harness, and fuse.

Maintenance and Repair Using the Parts Diagram

Using the parts diagram effectively can streamline the maintenance and repair process for your Craftsman T3000. Here are some steps to follow:

Step-by-Step Maintenance Guide

1. Consult the Parts Diagram:
 - Before starting any maintenance task, refer to the parts diagram to identify the components involved.
2. Gather Necessary Tools:
 - Ensure you have the right tools for the job, such as wrenches, screwdrivers, and pliers.
3. Disassemble Components:
 - Carefully remove any parts that need to be serviced. Refer to the exploded view in the diagram for guidance.
4. Inspect Parts:
 - Check for wear and tear. Look for cracks, rust, or any signs of damage that may require replacement.
5. Replace Components:
 - If any parts are damaged, use the parts list to order the correct replacements.
6. Reassemble:
 - Follow the reverse order of disassembly, using the parts diagram as a guide to ensure everything is put back correctly.
7. Test the Tractor:
 - Once reassembled, start your tractor and test its functionalities to ensure everything is working correctly.

Common Repairs and Their Diagrams

Here are a few common repairs you might encounter and how the parts diagram can help:

- Replacing the Blades:
 - Refer to the cutting deck section of the diagram to see how to remove and replace the blades safely.
- Fixing the Transmission:
 - If you experience transmission issues, consult the transmission section to identify the drive belt and pulley for potential replacement.
- Engine Troubles:
 - For engine-related problems, use the engine section of the diagram to locate the carburetor and ignition coil.

Where to Find the Parts Diagram

Finding a reliable parts diagram for your Craftsman T3000 can be done through various sources:

- Manufacturer's Website:
 - The Craftsman website often provides downloadable parts diagrams and manuals for their products.
- Online Retailers:
 - Many online retailers that sell replacement parts also offer parts diagrams for reference.
- Local Dealers:
 - Visiting a local authorized Craftsman dealer can provide access to physical copies of parts diagrams and expert advice.
- User Manuals:
 - If you have the user manual for your T3000, it may include a parts diagram or information on where to find one.

Conclusion

In conclusion, understanding the Craftsman T3000 parts diagram is vital for anyone looking to maintain or repair their lawn tractor. By familiarizing yourself with the various components and their functions, you can effectively diagnose issues and perform necessary repairs. Proper maintenance not only prolongs the life of your tractor but also ensures optimal performance. Whether you're replacing blades, fixing the transmission, or conducting routine checks, a well-interpreted parts diagram serves as an invaluable resource. With the right knowledge and tools, you can keep your Craftsman T3000 running smoothly for many seasons to come.

Frequently Asked Questions

What is the Craftsman T3000?

The Craftsman T3000 is a type of riding lawn mower designed for residential use, featuring a powerful engine and various cutting deck sizes.

Where can I find the parts diagram for the Craftsman T3000?

The parts diagram for the Craftsman T3000 can be found on the official Craftsman website or through authorized dealers and repair manuals.

Why is a parts diagram important for the Craftsman T3000?

A parts diagram is essential for identifying specific components, understanding assembly, and facilitating repairs or replacements.

How do I read the parts diagram for the Craftsman T3000?

To read the parts diagram, locate the section for the specific component you need, and match the part numbers with the corresponding parts list.

What common parts are included in the Craftsman T3000 parts diagram?

Common parts include the engine, cutting deck, wheels, belts, and electrical components.

Can I order parts directly from the Craftsman T3000 parts diagram?

Yes, most parts can be ordered directly from the Craftsman website or through authorized retailers based on the part numbers found in the diagram.

Is there a difference between the Craftsman T3000 and other models?

Yes, the Craftsman T3000 has distinct features and specifications that may differ from other models, such as engine power, cutting width, and design.

How often should I consult the parts diagram for maintenance?

It's advisable to consult the parts diagram during regular maintenance checks, repairs, or when replacing worn-out components.

What should I do if I can't find a specific part in the Craftsman T3000 parts diagram?

If a specific part is missing from the diagram, you can contact customer support or visit a parts dealer for assistance.

Are there online resources for troubleshooting Craftsman T3000 parts issues?

Yes, there are various online forums, videos, and repair websites that provide troubleshooting tips and guidance for Craftsman T3000 parts issues.

Find other PDF article:

<https://soc.up.edu.ph/46-rule/pdf?trackid=HID34-2306&title=pearson-chemistry-workbook-answers-chapter-6-p-57.pdf>

Craftsman T3000 Parts Diagram

Home | CRAFTSMAN®

Official website for CRAFTSMAN®. Explore power tools, outdoor equipment, hand tools, storage products and more.

Find A Retailer | CRAFTSMAN

Find a CRAFTSMAN® authorized provider near you and discover who sells CRAFTSMAN® tools online or in a retail store near you.

Shop Parts | CRAFTSMAN

Sometimes products wear down and need repair or maintenance. Fortunately, you have several options to fix your products with Craftsman Parts & Service.

Power Tools and Accessories | CRAFTSMAN

Browse high-performance power tools and accessories, including drivers, impacts, saws and more. Get the best quality for the job from Craftsman.

V20* 5.0AH Lithium Ion Battery | CRAFTSMAN

This V20* 5.0Ah Lithium Ion Battery is compatible with the CRAFTSMAN® V20* cordless power tool and outdoor tool lineup. The professional grade high performance cells provide improved ...

Home & Outdoor - Garden Tools, Mowers & More | CRAFTSMAN

When it comes to shaping up your yard, look no further than CRAFTSMAN® to find the right equipment for you. Browse cordless and gas tools at CRAFTSMAN®. Take on large lawns ...

Shop All Mowers | CRAFTSMAN

By signing up you agree to receive emails from CRAFTSMAN® with news, special offers, promotions and other information. You can unsubscribe at any time. See our Privacy Policy or ...

Customer Support | CRAFTSMAN

Find out more information about CRAFTSMAN® tools, warranty, parts, service, and more with our customer support resources.

42 in. Gas Zero-Turn Riding Mower (Z3200) | CRAFTSMAN

Transform your yard and mow up to 3 times faster than a walk behind*. The high-performance 42 in. Gas Zero-Turn Riding Mower (Z3200) features a powerful 547cc single-cylinder engine ...

V20* System Cordless Power Tools | CRAFTSMAN

Explore the CRAFTSMAN® V20* System of cordless power tools and products. The V20* System has the battery power, range and reliability to get your projects done.

Home | CRAFTSMAN®

Official website for CRAFTSMAN®. Explore power tools, outdoor equipment, hand tools, storage products and more.

Find A Retailer | CRAFTSMAN

Find a CRAFTSMAN® authorized provider near you and discover who sells CRAFTSMAN® tools online or in a retail store near you.

Shop Parts | CRAFTSMAN

Sometimes products wear down and need repair or maintenance. Fortunately, you have several options to fix your products with Craftsman Parts & Service.

Power Tools and Accessories | CRAFTSMAN

Browse high-performance power tools and accessories, including drivers, impacts, saws and more. Get the best quality for the job from Craftsman.

V20* 5.0AH Lithium Ion Battery | CRAFTSMAN

This V20* 5.0Ah Lithium Ion Battery is compatible with the CRAFTSMAN® V20* cordless power tool and outdoor tool lineup. The professional grade high performance cells provide improved ...

Home & Outdoor - Garden Tools, Mowers & More | CRAFTSMAN

When it comes to shaping up your yard, look no further than CRAFTSMAN® to find the right equipment for you. Browse cordless and gas tools at CRAFTSMAN®. Take on large lawns and ...

Shop All Mowers | CRAFTSMAN

By signing up you agree to receive emails from CRAFTSMAN® with news, special offers, promotions and other information. You can unsubscribe at any time. See our Privacy Policy or ...

Customer Support | CRAFTSMAN

Find out more information about CRAFTSMAN® tools, warranty, parts, service, and more with our customer support resources.

42 in. Gas Zero-Turn Riding Mower (Z3200) | CRAFTSMAN

Transform your yard and mow up to 3 times faster than a walk behind*. The high-performance 42 in. Gas Zero-Turn Riding Mower (Z3200) features a powerful 547cc single-cylinder engine ...

V20* System Cordless Power Tools | CRAFTSMAN

Explore the CRAFTSMAN® V20* System of cordless power tools and products. The V20* System has the battery power, range and reliability to get your projects done.

Explore our detailed Craftsman T3000 parts diagram to easily identify and source replacement parts. Learn more to keep your tools in top shape!

[Back to Home](#)