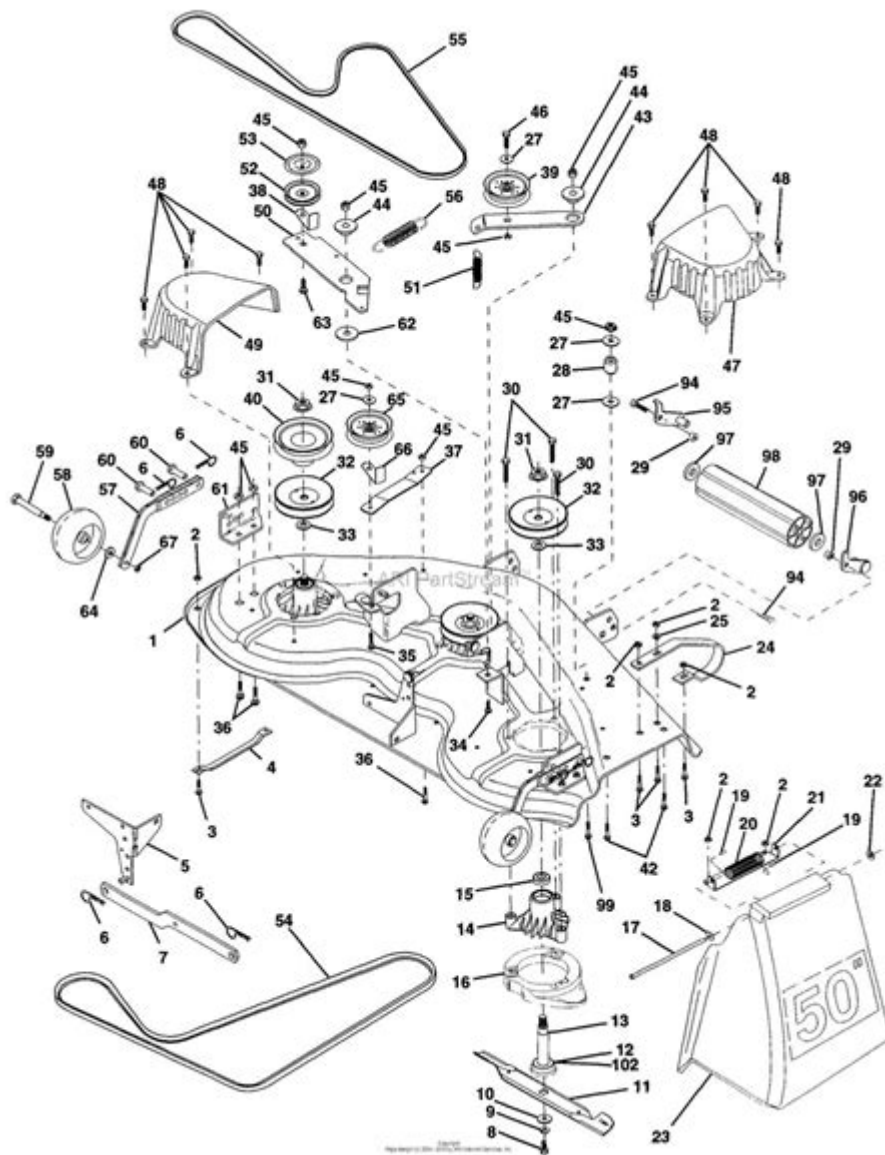


Craftsman Gt3000 48 Mower Deck Belt Diagram



Craftsman GT3000 48 Mower Deck Belt Diagram - Understanding the intricacies of your lawn mower's components is essential for maintaining its performance, longevity, and safety. The Craftsman GT3000 is a reliable riding mower that features a 48-inch mower deck, making it ideal for homeowners with medium to large lawns. One of the critical aspects of this machine is the mower deck belt, which drives the blades to cut grass effectively. In this article, we will explore the mower deck belt diagram for the Craftsman GT3000, its components, maintenance tips, and troubleshooting techniques to keep your mower running smoothly.

Understanding the Mower Deck Belt System

The mower deck belt is a crucial part of the GT3000's operation, responsible for transferring power

from the engine to the blades. Understanding its layout and function is essential for any maintenance tasks you may perform.

Components of the Mower Deck Belt System

The mower deck belt system consists of several key components:

1. **Mower Deck Belt:** This is the primary belt that powers the mower blades. It runs from the engine pulley to the spindle pulleys.
2. **Engine Pulley:** This is the part connected to the engine that drives the mower deck belt.
3. **Spindle Pulleys:** These are located on the mower deck and house the blade assemblies. The belt wraps around these pulleys to drive the blades.
4. **Idler Pulley:** This component helps maintain tension on the mower deck belt, ensuring it operates smoothly and efficiently.
5. **Tensioner:** Similar to the idler pulley, the tensioner helps keep the belt taut to prevent slipping and ensure proper blade operation.
6. **Blade Spindle Assemblies:** These house the blades and allow them to rotate freely.

How the Mower Deck Belt Works

The mower deck belt functions by transferring rotational energy from the engine to the blades through the following process:

- The engine's power is transmitted to the engine pulley.
- The engine pulley spins the mower deck belt.
- As the belt rotates, it moves around the spindle pulleys connected to the blade assemblies.
- The rotation of the spindle pulleys causes the blades to spin, effectively cutting the grass.

Understanding this operation is vital for diagnosing any issues related to the mower's cutting performance.

Mower Deck Belt Diagram for Craftsman GT3000

A diagram is essential for visualizing the layout of the mower deck belt system. While a written description is helpful, having a diagram can make belt routing and installation more manageable.

Diagram Overview:

- The mower deck belt typically follows a specific path around the engine pulley, idler pulley, and spindle pulleys.
- It wraps around the engine pulley first, moving towards the idler pulley, then continues to the spindle pulleys.

Important Note: Always refer to the specific manual for the Craftsman GT3000 for the most accurate diagram and routing instructions, as variations may exist based on the model year.

How to Read the Mower Deck Belt Diagram

1. Identify the Engine Pulley: This is usually located at the front of the mower, directly connected to the engine.
2. Locate the Idler Pulley: The idler pulley maintains tension on the belt and is typically positioned in a way that allows for easy adjustment.
3. Trace the Belt Route: Follow the path from the engine pulley to the idler and then to the spindle pulleys. Note how the belt wraps around each component.
4. Check for Additional Components: Some diagrams may include additional components, such as guides or guards that affect belt routing.

Installing the Mower Deck Belt

Replacing the mower deck belt on the Craftsman GT3000 can seem daunting, but with the right approach and tools, it can be done efficiently. Here's a step-by-step guide:

Tools Required

- Wrench set
- Socket set
- Screwdriver
- Replacement belt
- Gloves for protection

Steps to Replace the Mower Deck Belt

1. Safety Precautions:
 - Disconnect the spark plug to prevent accidental starts.
 - Wear gloves to protect your hands.
2. Remove the Mower Deck:
 - Use a wrench to detach the mower deck from the tractor. This usually involves removing the pins or bolts securing the deck.
 - Carefully slide the deck out from under the mower.
3. Remove the Old Belt:
 - Locate the routing of the old belt using the diagram for reference.
 - Remove any tensioner or idler pulleys if necessary to free up the belt.
 - Slide the old belt off the pulleys.
4. Install the New Belt:
 - Following the diagram, route the new belt around the engine pulley, idler pulley, and spindle pulleys.
 - Ensure the belt is properly seated in the grooves of the pulleys.

5. Reattach the Mower Deck:

- Carefully slide the mower deck back into place.
- Secure it using the pins or bolts that were removed.

6. Reconnect the Spark Plug:

- Once everything is reassembled, reconnect the spark plug.

7. Test the Mower:

- Start the mower and engage the blades to ensure everything is functioning correctly.

Maintenance Tips for the Mower Deck Belt

Maintaining the mower deck belt is crucial for ensuring optimal performance and longevity. Here are some tips:

- **Regular Inspection:** Frequently check the belt for signs of wear, such as fraying, cracking, or stretching.
- **Clean the Deck:** Keep the mower deck clean to prevent grass buildup, which can cause the belt to slip or wear prematurely.
- **Check Tension:** Ensure the belt tension is adequate. If it appears loose, adjust the idler pulley or tensioner.
- **Lubricate Moving Parts:** Regularly lubricate the idler and tensioner pulleys to minimize friction and wear.
- **Store Properly:** If storing the mower for an extended period, ensure the belt is not under tension, as this can cause it to stretch or warp.

Troubleshooting Common Issues

Even with proper maintenance, issues can arise. Here are some common problems and their solutions:

1. Belt Slipping:

- **Cause:** Worn or loose belt.
- **Solution:** Inspect the belt for wear and replace if necessary. Adjust the tension if it's loose.

2. Uneven Cutting:

- **Cause:** Misalignment of the mower deck.
- **Solution:** Adjust the height and alignment of the mower deck to ensure even cutting.

3. Belt Breakage:

- **Cause:** Over-worn belt or incorrect routing.
- **Solution:** Replace the belt and double-check the routing against the diagram.

4. No Power to Blades:

- **Cause:** Broken or disconnected belt.
- **Solution:** Inspect the belt for damage and ensure it is properly connected.

In conclusion, understanding the Craftsman GT3000 48 mower deck belt diagram is essential for maintaining your mower's performance. Regular inspections, timely replacements, and proper maintenance can extend the life of your mower and ensure a well-manicured lawn. By familiarizing yourself with the components, installation processes, and troubleshooting techniques, you can keep your Craftsman GT3000 in optimal condition for years to come.

Frequently Asked Questions

What is the correct part number for the mower deck belt for the Craftsman GT3000?

The correct part number for the mower deck belt for the Craftsman GT3000 is typically 144959. Always check your owner's manual for the exact part number.

How do I access the mower deck belt on a Craftsman GT3000?

To access the mower deck belt on a Craftsman GT3000, you need to raise the mower deck, remove the deck from the tractor, and then you can see the belt routing and pulleys.

Where can I find a diagram for the Craftsman GT3000 mower deck belt installation?

You can find the mower deck belt installation diagram for the Craftsman GT3000 in the owner's manual or on the Craftsman website. Many online forums and repair websites also provide diagrams.

What are common signs that the mower deck belt on a Craftsman GT3000 needs replacement?

Common signs that the mower deck belt needs replacement include excessive noise, fraying, cracking, or if the mower blades are not engaging properly.

Can I replace the mower deck belt on a Craftsman GT3000 myself?

Yes, you can replace the mower deck belt on a Craftsman GT3000 yourself. It requires basic tools and some mechanical knowledge. Follow the diagram for proper routing and tensioning.

Find other PDF article:

<https://soc.up.edu/ph/04-ink/Book?docid=AwM00-1795&title=airbnb-co-host-training.pdf>

[Craftsman Gt3000 48 Mower Deck Belt Diagram](#)

[Home | CRAFTSMAN®](#)

Official website for CRAFTSMAN®. Explore power tools, outdoor equipment, hand tools, storage products and more.

Find A Retailer | CRAFTSMAN

Find a CRAFTSMAN® authorized provider near you and discover who sells CRAFTSMAN® tools online or in a retail store near you.

Shop Parts | CRAFTSMAN

Sometimes products wear down and need repair or maintenance. Fortunately, you have several options to fix your products with Craftsman Parts & Service.

Power Tools and Accessories | CRAFTSMAN

Browse high-performance power tools and accessories, including drivers, impacts, saws and more. Get the best quality for the job from Craftsman.

V20 5.0AH Lithium Ion Battery | CRAFTSMAN*

This V20* 5.0Ah Lithium Ion Battery is compatible with the CRAFTSMAN® V20* cordless power tool and outdoor tool lineup. The professional grade high performance cells provide improved ...

Home & Outdoor - Garden Tools, Mowers & More | CRAFTSMAN

When it comes to shaping up your yard, look no further than CRAFTSMAN® to find the right equipment for you. Browse cordless and gas tools at CRAFTSMAN®. Take on large lawns ...

Shop All Mowers | CRAFTSMAN

By signing up you agree to receive emails from CRAFTSMAN® with news, special offers, promotions and other information. You can unsubscribe at any time. See our Privacy Policy or ...

Customer Support | CRAFTSMAN

Find out more information about CRAFTSMAN® tools, warranty, parts, service, and more with our customer support resources.

42 in. Gas Zero-Turn Riding Mower (Z3200) | CRAFTSMAN

Transform your yard and mow up to 3 times faster than a walk behind*. The high-performance 42 in. Gas Zero-Turn Riding Mower (Z3200) features a powerful 547cc single-cylinder engine ...

V20* System Cordless Power Tools | CRAFTSMAN

Explore the CRAFTSMAN® V20* System of cordless power tools and products. The V20* System has the battery power, range and reliability to get your projects done.

[Home | CRAFTSMAN®](#)

Official website for CRAFTSMAN®. Explore power tools, outdoor equipment, hand tools, storage products and more.

[Find A Retailer | CRAFTSMAN](#)

Find a CRAFTSMAN® authorized provider near you and discover who sells CRAFTSMAN® tools online or in a retail store near you.

[Shop Parts | CRAFTSMAN](#)

Sometimes products wear down and need repair or maintenance. Fortunately, you have several options to fix your products with Craftsman Parts & Service.

Power Tools and Accessories | CRAFTSMAN

Browse high-performance power tools and accessories, including drivers, impacts, saws and more. Get the best quality for the job from Craftsman.

V20 5.0AH Lithium Ion Battery | CRAFTSMAN*

This V20* 5.0Ah Lithium Ion Battery is compatible with the CRAFTSMAN® V20* cordless power tool and outdoor tool lineup. The professional grade high performance cells provide improved ...

Home & Outdoor - Garden Tools, Mowers & More | CRAFTSMAN

When it comes to shaping up your yard, look no further than CRAFTSMAN® to find the right equipment for you. Browse cordless and gas tools at CRAFTSMAN®. Take on large lawns ...

Shop All Mowers | CRAFTSMAN

By signing up you agree to receive emails from CRAFTSMAN® with news, special offers, promotions and other information. You can unsubscribe at any time. See our Privacy Policy or ...

Customer Support | CRAFTSMAN

Find out more information about CRAFTSMAN® tools, warranty, parts, service, and more with our customer support resources.

42 in. Gas Zero-Turn Riding Mower (Z3200) | CRAFTSMAN

Transform your yard and mow up to 3 times faster than a walk behind*. The high-performance 42 in. Gas Zero-Turn Riding Mower (Z3200) features a powerful 547cc single-cylinder engine ...

V20 System Cordless Power Tools | CRAFTSMAN*

Explore the CRAFTSMAN® V20* System of cordless power tools and products. The V20* System has the battery power, range and reliability to get your projects done.

Discover the Craftsman GT3000 48 mower deck belt diagram you need! Get clear instructions and tips for maintenance. Learn more to keep your mower running smoothly!

[Back to Home](#)