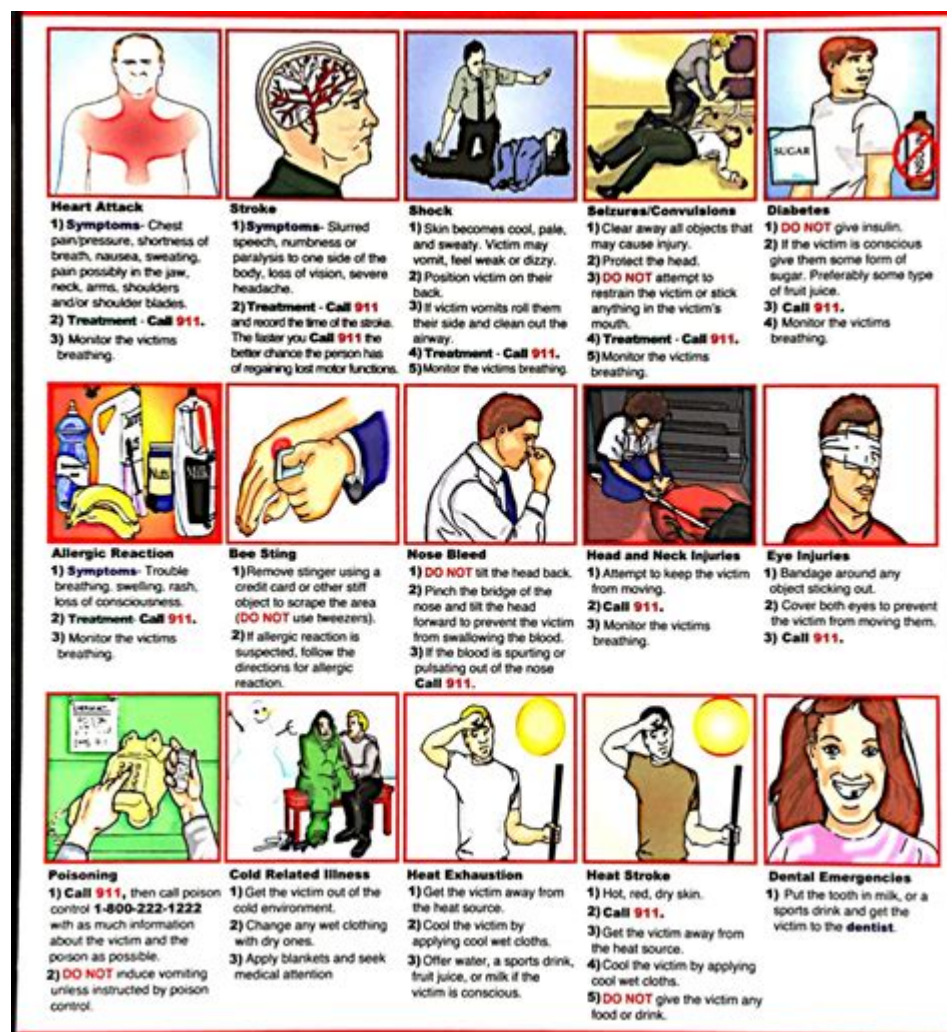


Cpr First Aid Study Guide 2013



CPR First Aid Study Guide 2013 is an essential resource for anyone looking to become proficient in life-saving techniques. Whether you're a healthcare professional, a teacher, or a concerned citizen, understanding CPR (Cardiopulmonary Resuscitation) and first aid is critical. This study guide not only provides valuable information about the procedures and techniques involved in CPR but also ensures that individuals are prepared to respond effectively in emergency situations. In this article, we will delve into the key components of the CPR First Aid Study Guide from 2013, covering the fundamentals of CPR, the importance of first aid, and guidelines for effective training.

Understanding CPR: The Basics

CPR is a life-saving technique used in emergencies when someone's heartbeat or breathing has stopped. The primary goal of CPR is to maintain blood flow to the brain and other vital organs until professional medical help arrives.

Key Components of CPR

The CPR process can be broken down into several critical steps:

1. Assess the Situation: Always ensure the scene is safe before approaching.
2. Check for Responsiveness: Tap the person and shout to see if they respond.
3. Call for Help: If there is no response, call 911 or ask someone else to do so.
4. Open the Airway: Tilt the head back slightly and lift the chin to open the airway.
5. Check for Breathing: Look, listen, and feel for normal breathing for no more than 10 seconds.
6. Begin Chest Compressions: If there is no breathing, begin CPR with chest compressions at a rate of 100 to 120 compressions per minute.
7. Rescue Breaths: After every 30 compressions, provide 2 rescue breaths if trained to do so.
8. Continue CPR: Keep performing CPR until emergency personnel arrive or the person shows signs of life.

Importance of First Aid

First aid is the immediate care given to a person who has been injured or is experiencing a medical emergency. Having first aid knowledge can significantly improve outcomes in emergency situations.

Why First Aid Training is Crucial

- Quick Response: Knowing how to respond quickly can save lives.
- Prevention of Further Injury: Proper first aid can prevent a victim's condition from worsening.
- Increased Confidence: Training provides individuals with the confidence to act effectively in emergencies.
- Community Safety: Trained individuals can help ensure the safety of their community.

Components of First Aid Training

First aid training covers a wide range of topics and skills. Here are some of the key areas included in first aid courses:

- Wound care and bandaging
- Burn treatment
- Managing fractures and sprains
- Recognizing and responding to medical emergencies (e.g., strokes, seizures)
- Using an automated external defibrillator (AED)

- Choking relief techniques for adults, children, and infants

Preparing for CPR and First Aid Certification

To effectively learn CPR and first aid, it's essential to prepare for certification courses. Here's how to get ready:

Steps to Prepare for Certification

1. Choose a Reputable Training Provider: Look for organizations such as the American Red Cross, American Heart Association, or other recognized institutions.
2. Review the Course Material: Familiarize yourself with the topics covered in the course.
3. Practice Hands-On Skills: Make sure to practice skills such as chest compressions and rescue breathing.
4. Participate in Group Training: Learning with others can enhance your skills and confidence.
5. Stay Updated: First aid and CPR guidelines can change; ensure you are learning the most current techniques.

Study Tips for the CPR First Aid Study Guide 2013

Studying for CPR and first aid courses requires focus and strategy. Here are some effective study tips:

Effective Study Techniques

- Create a Study Schedule: Allocate specific times for studying to keep yourself on track.
- Use Flashcards: Create flashcards for key terms and procedures to reinforce your memory.
- Practice Scenarios: Role-playing different emergency situations can help solidify your skills.
- Take Practice Tests: If available, take practice quizzes to assess your knowledge and areas needing improvement.
- Join a Study Group: Collaborating with peers can provide additional insights and motivation.

Common CPR and First Aid Myths

There are many misconceptions surrounding CPR and first aid. Here are some common myths:

- Myth: CPR is only for healthcare professionals.
Fact: Anyone can learn CPR and use it in emergencies.

- Myth: You should only perform CPR if you are trained.
Fact: If someone is in danger, doing something is better than doing nothing.
- Myth: You can harm someone by performing CPR.
Fact: The risks of not performing CPR far outweigh the potential for harm.

Conclusion

In summary, the **CPR First Aid Study Guide 2013** serves as a vital resource for anyone interested in learning how to save lives. Understanding the fundamentals of CPR and first aid, the importance of training, and the effective preparation strategies will equip you to act confidently in emergencies. By dispelling myths and reinforcing knowledge through practice and study, you can become a valuable asset to your community, ready to respond to emergencies with skill and assurance. Remember, being trained in CPR and first aid is not just a skill; it's a responsibility that can make a significant difference in critical situations.

Frequently Asked Questions

What are the key components of CPR according to the 2013 study guide?

The key components of CPR include checking for responsiveness, calling for emergency help, providing chest compressions, and delivering rescue breaths.

How has the CPR technique evolved in the 2013 study guide compared to earlier guidelines?

The 2013 study guide emphasizes high-quality chest compressions and recommends a compression-to-breath ratio of 30:2 for adults, which aligns with the newer focus on minimizing interruptions in compressions.

What is the recommended compression depth and rate for adult CPR in the 2013 guidelines?

The recommended compression depth is 2 to 2.4 inches (5 to 6 cm) and the rate should be 100 to 120 compressions per minute.

What should you do if you encounter a choking adult according to the 2013 study guide?

If an adult is choking and unable to breathe, perform abdominal thrusts (Heimlich maneuver) until the obstruction is cleared or the person loses consciousness.

What special considerations are mentioned in the 2013 study guide for performing CPR on children?

For children, use one hand for compressions if they are small, and the compression depth should be about 1.5 inches (4 cm). The compression-to-breath ratio remains 30:2.

What role does the use of an Automated External Defibrillator (AED) play in the 2013 CPR guidelines?

The use of an AED is encouraged as soon as it is available, as it can significantly increase the chances of survival by delivering an electric shock to restore a normal heart rhythm.

How often should first aid and CPR training be updated according to the 2013 study guide?

The 2013 study guide recommends that individuals should renew their CPR and first aid certification every two years to stay current with guidelines and techniques.

Find other PDF article:

<https://soc.up.edu.ph/61-page/Book?trackid=ldJ63-2725&title=the-red-and-the-black-by-stendhal.pdf>

Cpr First Aid Study Guide 2013

e-Channel Portal Login - CPKC r

Secure login portal for CPKC customers to access e-Channel services and applications.

Canadian Pacific - CPKC r

Canadian Pacific

Salvage and Procurement - View Tender - cpr.ca

Jul 18, 2025 · Notes: Information provided in this RFQ are for informational purposes only. Canadian Pacific Kansas City Railway makes no representations of condition. Bidders shall be ...

CP FastPass - CPKC r

Access CP FastPass for secure login to CP applications and services.

employees.cpr.ca

This portal provides employees with secure access to Canadian Pacific Kansas City resources and information.

Train Conductor Job Details | CPKC - careers.cpr.ca

Saratoga Springs Train Conductor - NY, 12866Join CPKC, North America's first transnational railroad connecting U.S. Canada and Mexico, where your career drives progress and safety is ...

Jobs at CPKC

Stay connected by joining our network! Enter your email and tell us a bit about yourself, and we'll keep you informed about upcoming events and opportunities that match your interests.

[Train Conductor Job Details | CPKC - careers.cpr.ca](#)

Minnedosa Train Conductor - MB, R0J 1E0Join CPKC, North America's first transnational railroad connecting U.S. Canada and Mexico, where your career drives progress and safety is ...

Chef de train Job Details | CPKC - careers.cpr.ca

Montreal Chef de train - QC, H4W 2J9CPKC engage présentement pour Octobre 2025. Les nouveaux employés ont droit à une prime d'embauche de 10,000\$. Le Canadien Pacifique ...

[Senior Internal Auditor Job Details | CPKC - careers.cpr.ca](#)

Calgary Senior Internal Auditor - AB, T2G 3J5Join CPKC, North America's first transnational railroad connecting U.S. Canada and Mexico, where your career drives progress and safety is ...

e-Channel Portal Login - CPKC r

Secure login portal for CPKC customers to access e-Channel services and applications.

[Canadian Pacific - CPKC r](#)

Canadian Pacific

[Salvage and Procurement - View Tender - cpr.ca](#)

Jul 18, 2025 · Notes: Information provided in this RFQ are for informational purposes only. Canadian Pacific Kansas City Railway makes no representations of condition. Bidders shall be ...

[CP FastPass - CPKC r](#)

Access CP FastPass for secure login to CP applications and services.

[employees.cpr.ca](#)

This portal provides employees with secure access to Canadian Pacific Kansas City resources and information.

Train Conductor Job Details | CPKC - careers.cpr.ca

Saratoga Springs Train Conductor - NY, 12866Join CPKC, North America's first transnational railroad connecting U.S. Canada and Mexico, where your career drives progress and safety is ...

Jobs at CPKC

Stay connected by joining our network! Enter your email and tell us a bit about yourself, and we'll keep you informed about upcoming events and opportunities that match your interests.

[Train Conductor Job Details | CPKC - careers.cpr.ca](#)

Minnedosa Train Conductor - MB, R0J 1E0Join CPKC, North America's first transnational railroad connecting U.S. Canada and Mexico, where your career drives progress and safety is ...

Chef de train Job Details | CPKC - careers.cpr.ca

Montreal Chef de train - QC, H4W 2J9CPKC engage présentement pour Octobre 2025. Les nouveaux employés ont droit à une prime d'embauche de 10,000\$. Le Canadien Pacifique ...

[Senior Internal Auditor Job Details | CPKC - careers.cpr.ca](#)

Calgary Senior Internal Auditor - AB, T2G 3J5Join CPKC, North America's first transnational railroad connecting U.S. Canada and Mexico, where your career drives progress and safety is ...

"Master essential lifesaving skills with our CPR First Aid Study Guide 2013. Dive into techniques

[Back to Home](#)