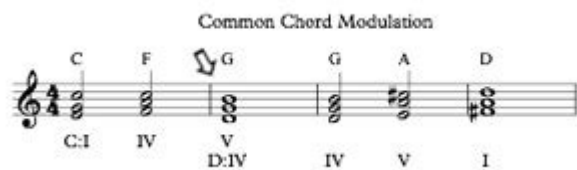


# Common Chord Modulation Examples



Common chord modulation examples are essential tools in the repertoire of any musician and composer. Modulation, the process of changing from one key to another, is a fundamental aspect of music that enhances emotional expression and structural variation. Understanding common chord modulation can significantly elevate a piece of music, allowing composers and performers to create a seamless transition between different tonal centers. This article will explore various techniques and examples of common chord modulation, examining how they are applied in different musical contexts.

## Understanding Modulation

Before delving into common chord modulation examples, it's crucial to understand what modulation entails. Modulation can be defined as the shift from one key to another. It serves various purposes, such as:

- Enhancing emotional impact: Different keys can evoke different feelings. Modulating can heighten tension or provide resolutions.
- Creating contrast: Changing keys offers a fresh perspective on musical material, keeping the listener engaged.
- Developing themes: Modulation can help in the development of musical themes, allowing them to evolve and change throughout a piece.

## Types of Modulation

There are several techniques for modulation, but common chord modulation is one of the most widely used. The most prevalent types of modulation include:

1. Common Chord Modulation: This technique uses chords that are common to both the original and the target key.
2. Direct Modulation: This abrupt change occurs without preparation, often catching listeners off guard.
3. Sequential Modulation: This technique involves repeating a musical idea in different keys.
4. Chromatic Modulation: This method utilizes chromatic movement to transition between keys.

Among these, common chord modulation is particularly effective due to its smooth and coherent nature.

## Common Chord Modulation Explained

Common chord modulation, also known as pivot chord modulation, involves finding a chord that functions in both the original key and the new key. This pivot chord serves as a bridge, facilitating a smooth transition. Here's how it works:

1. Identify the original key: Determine the key you are starting in.
2. Find the pivot chord: Look for a chord that exists in both the original key and the desired target key.
3. Transition to the new key: Use the pivot chord to modulate into the new key, often following it with chords that belong to the new key.

## Examples of Common Chord Modulation

To illustrate common chord modulation, we will explore several examples across different genres and styles.

### Example 1: Classical Music

In classical music, composers like Beethoven and Mozart frequently employed common chord modulation.

- Beethoven's "Moonlight Sonata":
- Original Key: C minor.
- Pivot Chord: E major (which acts as the dominant of A major).
- Transition: The piece modulates to A major, where the pivot chord (E major) serves as a dominant chord leading into the new key.

This modulation adds a layer of emotional depth and contrast, enhancing the overall expressiveness of the piece.

### Example 2: Popular Music

Common chord modulation is prevalent in contemporary music as well.

- "Shallow" by Lady Gaga and Bradley Cooper:
- Original Key: G major.
- Pivot Chord: B minor (the relative minor chord).
- Transition: The song shifts to D major, using the B minor chord as a pivot.

The modulation enhances the dramatic effect of the song, bringing an

emotional lift during the chorus.

### **Example 3: Jazz Standards**

Jazz music often incorporates common chord modulation to create intricate harmonic progressions.

- “Autumn Leaves”:
- Original Key: G major.
- Pivot Chord: A minor (the sixth chord of C major).
- Transition: The piece shifts to C major, using A minor as the pivot chord.

Jazz musicians often exploit these modulations to add harmonic richness and complexity to their performances.

## **Common Chord Modulation Techniques**

To effectively use common chord modulation, it’s helpful to understand the different techniques involved. Here are some strategies to consider:

1. Using Diatonic Chords: Identify chords that exist within the diatonic scale of both keys.
2. Utilizing Secondary Dominants: Introduce secondary dominants that lead to the pivot chord, enhancing the transition.
3. Employing Voice Leading: Smooth voice leading between chords can help facilitate a more seamless modulation.
4. Creating Melodic Connections: Use melodic lines that connect the original key to the new key, often employing common tones.

## **Practical Exercises**

To master common chord modulation, it’s beneficial to practice with a few exercises:

- Exercise 1: Choose a key and write a short chord progression. Identify a pivot chord and then modulate to a new key using that pivot.
- Exercise 2: Take a popular song and analyze its modulations. Identify the pivot chords and the keys involved.
- Exercise 3: Compose a short piece that incorporates common chord modulation, intentionally using pivot chords to transition between sections.

# Challenges of Common Chord Modulation

While common chord modulation is a powerful technique, it comes with its challenges. Some common pitfalls include:

- Overuse of the Same Modulation: Relying too heavily on common chord modulation can make a piece feel predictable.
- Inappropriate Pivot Chords: Choosing pivot chords that don't fit well can disrupt harmonic flow.
- Neglecting Melodic Aspect: Focusing solely on harmony can lead to a lack of melodic cohesion during transitions.

To avoid these pitfalls, musicians should strive for variety in their modulations and ensure that both harmony and melody are considered in their transitions.

## Conclusion

In conclusion, common chord modulation examples serve as a vital resource for musicians and composers looking to enhance their musical expressions. By understanding the mechanics behind common chord modulation and practicing various techniques, musicians can elevate their compositions and performances. Whether in classical, popular, or jazz contexts, the ability to modulate seamlessly between keys opens up a world of creative possibilities. As you explore the vast landscape of music, remember the power of modulation and how it can transform your musical journey.

## Frequently Asked Questions

### What is common chord modulation?

Common chord modulation is a technique where a piece of music shifts from one key to another by using a chord that is common to both keys.

### Can you give an example of common chord modulation in classical music?

A famous example is Beethoven's 'Moonlight Sonata', where he modulates from C minor to E major using the common chord of B major.

### How does common chord modulation differ from direct modulation?

Common chord modulation uses a shared chord to transition smoothly between keys, while direct modulation jumps abruptly to a new key without a shared

chord.

**What are some common chords used in modulation?**

Common chords often used in modulation include the dominant (V) chord, subdominant (IV) chord, or any chord that exists in both the original and target keys.

**Is common chord modulation used in contemporary music?**

Yes, common chord modulation is often found in contemporary genres, such as pop and jazz, where artists utilize shared chords for smooth transitions between sections.

**What is a practical way to identify common chord modulation in a song?**

Listen for a chord that appears in both keys during a key change; this chord typically serves as a pivot point for the modulation.

**Can common chord modulation create emotional impact in music?**

Absolutely! Modulating to a new key using common chords can enhance emotional depth and add contrast, making the music more engaging.

Find other PDF article:  
<https://soc.up.edu.ph/33-gist/pdf?trackid=gfG33-3233&title=intelligent-fanatics-project-how-great-leaders-build-sustainable-businesses.pdf>

**Common Chord Modulation Examples**

common 通用 一般 通常 普通 ...  
common 通用 一般 通常 普通 ... general 一般 普通 ...  
general 一般 普通 ...

通用 一般 普通 - 通用  
通用 一般 普通 http://www.kuaiyun.net.cn/common/login.zul “通用 一般 普通 ”82通用 一般 普通  
通用 一般 普通

通用12123通用 一般 普通 - 通用  
Aug 27, 2024 · 通用12123通用 一般 普通12123通用 一般 普通https://gab.122.gov.cn/m/login通用12123通用 一般 普通  
通用 一般 普通 ...

U盘安装Steam - 安装Steam - 安装Steam - 安装Steam - 安装Steam

5. 将u盘中的common文件夹复制到X:\SteamLibrary\steamapps\common\acf文件夹  
X:\SteamLibrary\steamapps\ 6. 安装 ...

BC和BCE - 历史 - 历史 - 历史 - 历史 - 历史

Jan 14, 2015 · 公元前（BC）和公元（CE）是用于表示时间的单位。BCE 是 “Common Era” 的缩写，CE 是 “Common Era” 的缩写。 ...

c:\common files - 系统 - 系统 - 系统 - 系统 - 系统

System Direct X Common Files 文件夹位于 C:\Common Files 文件夹下。该文件夹包含用于安装和运行某些应用程序所需的文件。 ...

C:\tencent - 系统 - 系统 - 系统 - 系统 - 系统

Apr 5, 2010 · C:\tencent 文件夹位于 C:\Program Files 文件夹下。该文件夹包含腾讯公司（Tencent）的某些应用程序，如 QQ。 ...

C:\\$windows.~BT - 系统 - 系统 - 系统 - 系统 - 系统

C:\\$windows.~BT 文件夹位于 C:\Windows 文件夹下。该文件夹包含 Windows 10 的某些系统文件。 ...

cad - 系统 - 系统 - 系统 - 系统 - 系统

该文件夹位于 C:\Program Files\Autodesk Shared\AcShellEx 文件夹下。该文件夹包含 AutoCAD 的某些系统文件。 ...

autodesk shared - 系统 - 系统 - 系统 - 系统 - 系统

autodesk shared 文件夹位于 C:\Program Files\Autodesk Shared 文件夹下。该文件夹包含 AutoCAD 的某些系统文件。 ...

common universal general usual - 系统 - 系统 - 系统 - 系统 - 系统

common universal general usual 文件夹位于 C:\Program Files 文件夹下。该文件夹包含某些通用文件的副本。 ...

kuaiyun - 系统 - 系统 - 系统 - 系统 - 系统

kuaiyun 文件夹位于 C:\Program Files 文件夹下。该文件夹包含某些通用文件的副本。 ...

12123 - 系统 - 系统 - 系统 - 系统 - 系统

Aug 27, 2024 · 12123 文件夹位于 C:\Program Files 文件夹下。该文件夹包含某些通用文件的副本。 ...

U盘安装Steam - 安装Steam - 安装Steam - 安装Steam - 安装Steam

5. 将u盘中的common文件夹复制到X:\SteamLibrary\steamapps\common\acf文件夹  
X:\SteamLibrary\steamapps\ 6. 安装 ...

BC和BCE - 历史 - 历史 - 历史 - 历史 - 历史

Jan 14, 2015 · 公元前（BC）和公元（CE）是用于表示时间的单位。BCE 是 “Common Era” 的缩写，CE 是 “Common Era” 的缩写。 ...

c:\common files - 系统 - 系统 - 系统 - 系统 - 系统

System Direct X Common Files 文件夹位于 C:\Common Files 文件夹下。该文件夹包含用于安装和运行某些应用程序所需的文件。 ...

C:\tencent\...\\_...

Apr 5, 2010 · C:\tencent\...Tencent\...QQ\...QQ\...  
D\... ..

C:\\$windows.~BT\...\_...

C:\\$windows.~BT\...windows10\...Windows 10... ..

**cad**\...\**cad**\... ..

...C:\Program Files\Common Files\Autodesk Shared\AcShellEx\AcLauncher.exe\...  
... CAD ...

*autodesk shared*\... - ...

autodesk shared\... Autodesk shared \...3D \...AutoCAD\... \...  
\AutoCAD\... ..

Explore common chord modulation examples that elevate your music composition. Discover how to seamlessly transition between keys and enhance your sound. Learn more!

[Back to Home](#)