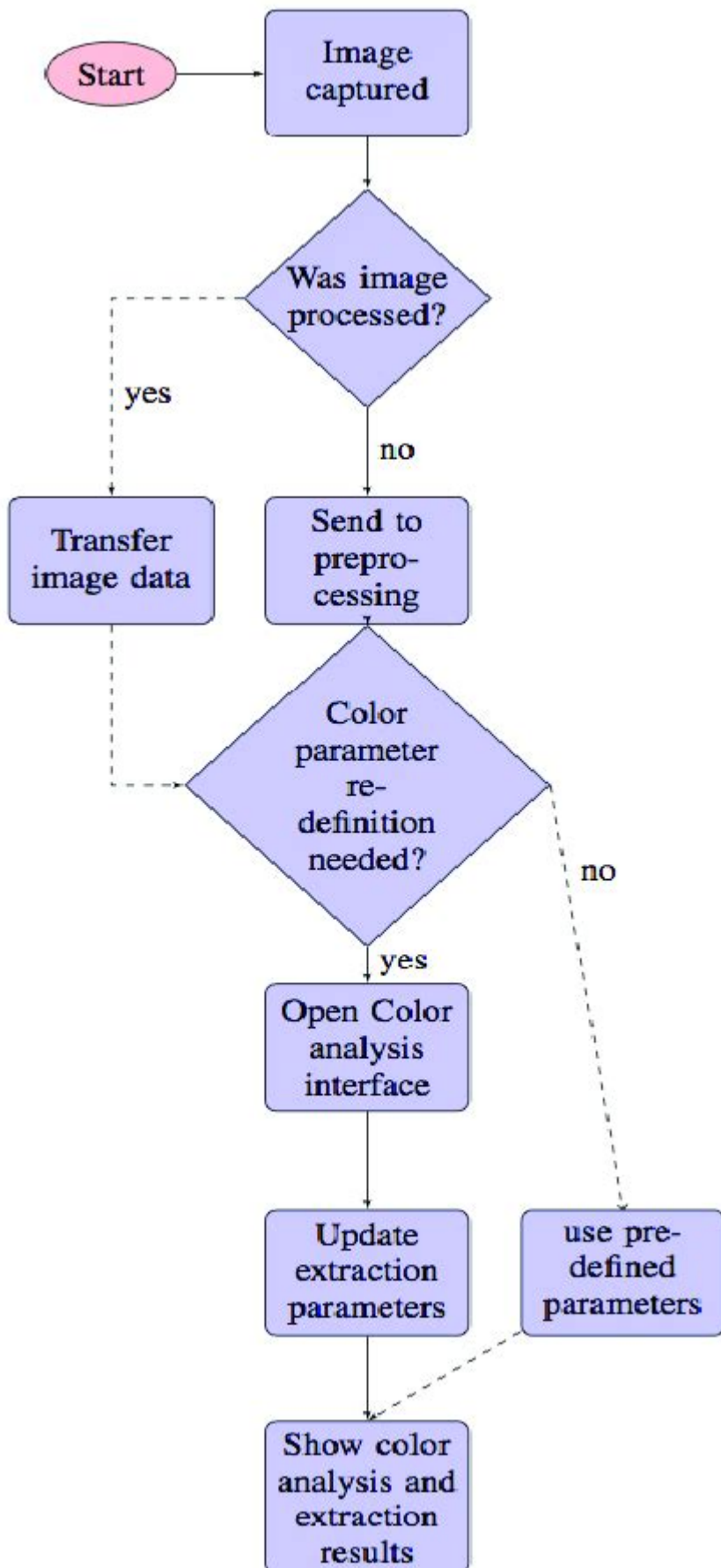


Color Analysis Flow Chart



Color analysis flow chart is a visual tool that guides individuals in determining which colors best complement their skin tone, eye color, and hair color. This process, often referred to as personal color analysis, is essential for anyone looking to enhance their wardrobe, makeup, and overall aesthetic. In this article, we will explore the concept of color analysis, the significance of the flow chart, the different systems used in color analysis, and how to effectively utilize a color analysis flow chart in your personal style journey.

Understanding Color Analysis

Color analysis is a method used to identify the colors that harmonize with an individual's natural features. The primary goal is to enhance one's appearance by selecting colors that make the skin look radiant, eyes sparkle, and hair shine. The process involves categorizing individuals into seasonal color palettes, each corresponding to a set of characteristics.

The Importance of Color Analysis

1. **Boosts Confidence:** Wearing colors that suit you can significantly enhance your self-esteem and confidence.
2. **Saves Time and Money:** Understanding your color palette helps streamline shopping decisions, leading to fewer impulse buys and wasted resources on clothing that doesn't suit you.
3. **Enhances Personal Style:** A well-defined color palette allows for the creation of a cohesive wardrobe that reflects your personality and tastes.
4. **Aids in Makeup Selection:** Knowing which colors work for you can simplify choosing makeup, from foundation to eyeshadow and lipstick.

Color Analysis Systems

There are several systems of color analysis, each with its own methodology. The most common systems include:

1. **Seasonal Color Analysis:** This system divides individuals into four seasons—Winter, Spring, Summer, and Autumn—based on their natural coloring. Each season has distinct color characteristics.
2. **12-Tone Color System:** An expansion of the seasonal system, this method adds more nuance by dividing each season into three sub-categories, resulting in a total of twelve different palettes.
3. **Color Theory:** Rooted in art and design, color theory involves understanding how colors interact with each other and how to mix colors effectively.

The Seasonal Color Analysis Explained

The Seasonal Color Analysis is one of the most widely used methods for color analysis. Below are the four main seasonal categories:

- Winter: Characterized by cool undertones, Winters often have dark hair and bright, striking eyes. Suitable colors include jewel tones like emerald and sapphire, as well as pure white and black.
- Spring: Springs typically have warm undertones with light hair and bright eyes. Their palette includes warm and clear colors like coral, peach, and light blue.
- Summer: Summers possess cool undertones, often with lighter hair and soft, muted eye colors. Their colors are soft and muted, such as pastels and soft neutrals.
- Autumn: Autumns usually have warm undertones with rich hair colors. Their palette consists of earthy tones, such as olive green, burnt orange, and deep browns.

Creating a Color Analysis Flow Chart

A color analysis flow chart visually maps out the process of determining an individual's color palette. Here's how to create one and what it typically includes:

Steps to Create a Color Analysis Flow Chart

1. Identify the Subject's Features: Start by assessing the individual's natural features, including skin tone, eye color, and hair color.
2. Determine Undertones: The next step is to identify whether the individual has warm, cool, or neutral undertones. This can be done through various methods, such as the vein test or the jewelry test.
3. Select Seasonal Category: Based on the undertones and features, categorize the individual into one of the four seasonal types.
4. Choose Color Palette: Each seasonal category has its own set of colors. Select colors that align with the identified season.
5. Visual Representation: Organize this information in a flow chart format, using arrows to guide the viewer through the steps.

Example Color Analysis Flow Chart

Below is a simplified version of what a color analysis flow chart might look like:

1. Start

- Assess Skin Tone
- Cool Undertone → Proceed to Step 2
- Warm Undertone → Proceed to Step 3

2. Cool Undertone

- Assess Hair Color
- Dark Hair → Winter
- Light Hair → Summer

3. Warm Undertone

- Assess Hair Color
- Dark Hair → Autumn
- Light Hair → Spring

4. Choose Color Palette

- Based on the seasonal category identified.

Utilizing the Color Analysis Flow Chart

Using a color analysis flow chart effectively can transform your approach to fashion and beauty. Here's how to make the most of it:

Step-by-Step Guide

1. Conduct a Personal Assessment: Use the flow chart to assess your features systematically. Take your time to understand the characteristics that define your coloring.
2. Experiment with Colors: Once you identify your seasonal palette, begin experimenting with different shades. Try incorporating these colors into your wardrobe and makeup routine.
3. Evaluate Your Choices: As you wear new colors, take note of how they make you feel. Pay attention to compliments and how your features appear in different lighting.
4. Revise as Needed: Your preferences may evolve over time. Don't hesitate to revisit the flow chart and reassess your color palette.

Common Mistakes to Avoid

- Ignoring Undertones: Always prioritize undertones over surface color when selecting your palette.
- Sticking Rigidly to One Season: While seasonal categories are helpful, personal preferences and unique combinations can lead to discovering new shades that suit you.
- Neglecting Fabric and Texture: The material of the clothing can also influence how colors appear.

Ensure the fabric complements your chosen colors.

Conclusion

A **color analysis flow chart** serves as an invaluable tool in navigating the often overwhelming world of colors in fashion and beauty. By understanding your unique features and how they interact with color, you can enhance your personal style, boost your confidence, and create a wardrobe that reflects your true self. Whether you are embarking on a style transformation or simply seeking to refine your aesthetic, a well-designed color analysis flow chart can be your guide to discovering the palette that makes you shine.

Frequently Asked Questions

What is a color analysis flow chart and its purpose?

A color analysis flow chart is a visual tool used to assess and categorize colors based on various characteristics such as hue, saturation, and brightness. Its purpose is to help individuals determine their best color choices for personal styling, branding, or design projects.

How do I create a color analysis flow chart?

To create a color analysis flow chart, start by defining the criteria for color evaluation (e.g., warm vs. cool tones). Then, organize the colors into categories based on these criteria, using decision points that guide the user through a series of questions leading to their ideal color palette.

What are the benefits of using a color analysis flow chart in fashion?

Using a color analysis flow chart in fashion helps individuals identify colors that complement their skin tone, hair color, and eye color, leading to more flattering clothing choices. It can also enhance personal confidence and streamline shopping decisions.

Can a color analysis flow chart be applied to graphic design?

Yes, a color analysis flow chart can be applied to graphic design by helping designers select color schemes that evoke specific emotions or convey a brand's identity. It aids in understanding color theory and the psychological effects of colors in design.

Are there specific tools or software for creating color analysis flow charts?

Yes, there are various tools and software available for creating color analysis flow charts, including graphic design software like Adobe Illustrator, online flowchart makers like Lucidchart, and specialized color palette generators that can visually represent color categories.

<https://soc.up.edu.ph/45-file/Book?docid=xKO66-8991&title=original-3d-crystal-puzzle-leopard-instructions.pdf>

[illegible]

May 25, 2023 · I was wondering if there is a full profile on LinkedIn that I can test my app on. By full I mean a profile which has all the fields and can be accessed publicly (using the LinkedIn ...

Jan 7, 2019 · As per LinkedIn doc If application has made a successful LinkedIn v1 API request from September 1, 2018 to December 17, 2018, It has immediate access to the v2 API but ...

FPGA 15-30K 20-40K 25k ...

Although I upvoted the chosen answer a couple of weeks back, in the meantime I struggled a lot more with this topic. It feels like having a special Python installation and using special modules ...

Dec 17, 2018 · LinkedIn has deprecated that old authentication, now you need to use the OpenID connect product, for that you need to use linkedin-openid in the route instead of linkedin:

```

Win10 Win11
...

```

Stack Overflow | The World's Largest Online Community for Developers

[illegible]

3. $\sum_{n=0}^{\infty} \frac{(-1)^n}{(n+1)!} = e^{-1}$

...

May 11, 2023 · So, there's quite some users that just don't have the mental capacity to understand

they can edit posts, and sometimes post reply after reply after reply to a single ...

Zooville.org News and Announcements | Zooville Forum

Feb 4, 2021 · Zooville.org News and Announcements Zooville Suggestions Threads 101 Messages
2.5K Hide/filter subs from new posts Jul 13, 2025 Sumpup

French | Zooville Forum

Jan 6, 2021 · Suddenly unable to log into your ZooVille account? This might be the reason why:
CLICK HERE!

Receiving Your First Knotting Experience - Zooville.org

Apr 28, 2023 · Hi everyone, Looking back at that first experience you had, with the build up you had, all the thoughts about actually doing it, and now it was going to happen, did your ...

mis experiencias parte 4 | Zooville Forum

Jan 29, 2025 · Aquí ire contando todas mis experiencias en el zoo, de cuando inicié hasta cuando termine, son historias reales y espero ir contando capitulo por capitulo mi avance en el zoo ya ...

New here!! | Zooville Forum

Aug 22, 2024 · Hi, 25F here and I'm new to the website! I've been a lurker for a bit, but I've finally decided to test the waters and post. :) I look forward to meeting some like-minded people!

Nouveau | Zooville Forum

Dec 30, 2024 · Bonjour à tous, nouveau ici j'ai 38 ans et amoureux des chiens ☺ Au plaisir de vous lire à bientôt

¿Que otros foros conocen de zoo en español? | Zooville Forum

Apr 26, 2023 · Como saben este foro es más que nada principalmente en inglés y quisiera saber si existen más espacios para hablar español ?

ZooVille Articles & Blog's Guidelines

Sep 27, 2019 · Articles and Blogs were an important part of Zooville. So we've set this space up for this unique area of the site. Here is the rules ARTICLES category A curated selection of ...

Polish | Page 2 | Zooville Forum

Nov 30, 2023 · Suddenly unable to log into your ZooVille account? This might be the reason why:
CLICK HERE!

Unlock the secrets of your ideal color palette with our detailed color analysis flow chart. Discover how to enhance your style today!

[Back to Home](#)