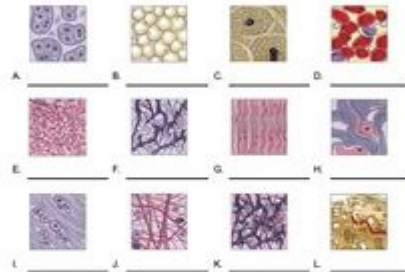


Connective Tissue Matrix Worksheet Answers

6. Match the connective tissue cell type with its description.

adipocytes / cyle	A. Cell found in many types of connective tissues.
osteoblasts / cyle	B. Cell found in bone.
chondroblasts / cyle	C. Cell found in fat.
fibroblasts / cyle	D. Cell found in cartilage.

7. Examine the diagrams of connective tissue below and label each with the correct name (you may use "CT" for connective tissue). Then, match each diagram letter with the correct description of it.



8. Loose network of fat-filled adipocytes; used for protection, storage, insulation.
9. Loose network of branching reticular fibers; used for structure in soft organs.
10. Loose network of collagen and elastic fibers; used for binding organs together.
11. Dense network of tight, parallel collagen fibers; used for strength and binding.
12. Dense network of clumped collagen fibers; used for support and movement.
13. Dense network of elastic fibers with many fibroblasts; used for stretchiness in organs.
14. Liquid connective tissue with cells and other elements in a fluid; used for transport.
15. Solid bone; contains osteocytes in lacunae; used for support and protection.
16. Web-like bone; made of interlocking trabeculae; used for support and protection.
17. Strongest cartilage; made of wavy collagen fibers; used for support and protection.
18. Weakest cartilage; made of chondrocytes in lacunae; used for support and flexibility.
19. Cartilage with collagen and many elastic fibers; used for support and elasticity.

Connective tissue matrix worksheet answers are essential for anyone studying anatomy, biology, or healthcare. Understanding the structure and function of connective tissues is fundamental to grasping how the body maintains its integrity and supports various physiological processes. This article will delve into the components of the connective tissue matrix, its functions, and how to effectively use worksheets to enhance learning and retention of this crucial subject.

What is Connective Tissue?

Connective tissue is one of the four primary types of tissues found in the body, alongside epithelial, muscle, and nervous tissues. It plays a vital role in providing support, binding other tissues together, and facilitating transportation of nutrients and waste products. The connective tissue matrix is a complex network of proteins and carbohydrates that provides strength and elasticity to tissues.

Components of Connective Tissue Matrix

The connective tissue matrix is composed of two main components: fibers and ground substance.

Each of these components has distinct characteristics and functions.

- **Fibers:** These are structural proteins that provide support and strength to the tissue. The major types of fibers include:
 - **Collagen fibers:** The most abundant type, providing tensile strength.
 - **Elastic fibers:** Allow for flexibility and stretch.
 - **Reticular fibers:** Form a supportive mesh in soft tissues.

- **Ground Substance:** This is the non-cellular material that fills the spaces between cells and fibers. It can be:
 - **Solid:** As in bone.
 - **Gel-like:** As in cartilage.
 - **Fluid:** As in blood plasma.

Functions of Connective Tissue Matrix

The connective tissue matrix serves several essential functions that contribute to the overall health and stability of the body:

1. **Support and Structure:** The matrix provides a framework that supports the shape and structure of organs and tissues.
2. **Transportation:** In the case of blood, the matrix facilitates the transport of nutrients, gases, and waste products.
3. **Storage:** Connective tissues store energy in the form of fat and minerals such as calcium.
4. **Protection:** Some connective tissues, like bone and cartilage, protect vital organs and provide cushioning.
5. **Healing:** The matrix plays a significant role in tissue repair and regeneration following injury.

Using Worksheets to Learn About the Connective Tissue Matrix

Worksheets are an effective educational tool for reinforcing concepts related to the connective tissue matrix. By using worksheets, learners can engage with the material actively, allowing for better retention and understanding. Here are some strategies for utilizing worksheets in your studies:

Types of Worksheets

There are various types of worksheets that can aid in learning about connective tissues:

1. **Labeling Diagrams:** These worksheets typically provide diagrams of connective tissues where students can label the different components, such as fibers and cells.

2. **Fill-in-the-Blank Activities:** These worksheets present sentences with missing words related to connective tissue, encouraging students to recall specific terminology.
3. **Matching Exercises:** In these worksheets, students can match terms with their definitions or functions, reinforcing their understanding of the material.
4. **Case Studies:** Worksheets that include case studies can help students apply their knowledge to real-world situations, enhancing critical thinking.

Tips for Completing Connective Tissue Matrix Worksheets

To maximize the benefits of using worksheets, consider the following tips:

- **Review Class Materials:** Before starting the worksheet, review your notes and textbook to ensure you understand the concepts.
- **Work in Groups:** Collaborating with classmates can provide new insights and enhance learning through discussion.
- **Ask Questions:** If you encounter challenging concepts, don't hesitate to ask your instructor or peers for clarification.
- **Use Visual Aids:** Diagrams, charts, and models can help visualize the structure of connective tissues and their matrix components.

Common Questions About Connective Tissue Matrix

Worksheets

As students engage with the topic, they often have common questions that can guide their learning process. Here are some frequently asked questions:

1. What are the main types of connective tissue?

Connective tissues are classified into several categories, including:

- Loose connective tissue
- Dense connective tissue
- Specialized connective tissues (e.g., cartilage, bone, adipose tissue, blood)

2. How does the connective tissue matrix differ in various types of connective tissue?

The composition of the connective tissue matrix varies depending on the type of tissue. For instance, cartilage has a gel-like matrix, while bone has a rigid, mineralized matrix.

3. Why is the connective tissue matrix important for healing?

The connective tissue matrix provides a scaffold for new cell growth and tissue repair, facilitating the healing process after injury.

Conclusion

In summary, understanding **connective tissue matrix worksheet answers** is crucial for students and professionals in fields related to health and biology. The matrix's structure, functions, and variations across different connective tissues provide insights into the body's functioning and healing processes. By utilizing worksheets effectively, learners can deepen their comprehension of this essential topic and apply their knowledge in practical contexts. Whether through labeling diagrams, filling in blanks, or engaging in case studies, worksheets serve as a valuable resource in mastering the complex world of

connective tissue.

Frequently Asked Questions

What is the connective tissue matrix?

The connective tissue matrix is the non-cellular component of connective tissue, consisting of fibers and ground substance that provides structural support and facilitates communication between cells.

What are the main components of the connective tissue matrix?

The main components include collagen fibers, elastic fibers, reticular fibers, and ground substance, which may contain proteoglycans, glycoproteins, and water.

How does the connective tissue matrix differ between types of connective tissue?

Different types of connective tissue have varying proportions of matrix components, such as loose connective tissue having a more gelatinous matrix, while dense connective tissue has a thicker collagen fiber matrix.

What role does the connective tissue matrix play in tissue repair?

The connective tissue matrix provides a scaffold for cell attachment and migration during tissue repair, and its components can influence the healing process by regulating inflammation and cell proliferation.

How can one study the connective tissue matrix effectively?

Effective study methods include using worksheets that focus on identifying matrix components, understanding their functions, and applying knowledge through diagrams and practical examples.

What are common challenges students face when learning about the connective tissue matrix?

Common challenges include memorizing the various components and their functions, understanding the diversity of connective tissues, and applying theoretical knowledge to practical scenarios.

Find other PDF article:

<https://soc.up.edu.ph/03-page/Book?trackid=SpB45-0039&title=a-reason-to-breathe-1-cp-smith.pdf>

Connective Tissue Matrix Worksheet Answers

Connective - Canadian Nonprofit

At Connective we work to help people overcome barriers and achieve their goals, because everyone deserves to feel safe and included in their chosen community – regardless of the ...

Balsam Place - Appaloosa HEARTH -Connective

Connective is a social services nonprofit with a long history of supporting people in BC. Our housing programs are person-centered, meaning we tailor our services to the people we serve.

About Us - Connective

At Connective, we believe that person-centred service and public accountability go hand in hand. Every dollar invested in our programs and services is carefully stewarded to help meet the ...

Non Profit Jobs - Careers with Connective

Start your career with Connective. We're hiring direct support, administrative, and management non profit jobs across BC and the Yukon.

927 Main Transitional Housing - Connective

Connective's transitional housing program at 927 Main St. provides safe and secure housing with supports to people experiencing homelessness

Housing - Connective

Residents may live in a Connective housing program, or a community setting. Supportive Housing also includes programs designed for those under the care of Community Living BC (CLBC), ...

Northern BC Therapeutic Community (NBCTC) - connective.ca

Once you have been referred, the next step is to complete this application package with the help of a community service professional. If you need help completing the application, please ...

Social Services - Connective

Service Categories Service Search Services Connective is partnering with VCH to operate a new community of care model designed to support the complex mental health and substance use ...

Community Living BC - Connective

Our Community Living services support adults under the care of Community Living BC (CLBC) to achieve greater independence

Our Work - Connective | Non Profit Organization

Connective's approach is person-centered, holistic, and strengths-based. Our non profit organization continues to evolve to reflect the needs of our communities.

Connective - Canadian Nonprofit

At Connective we work to help people overcome barriers and achieve their goals, because everyone deserves to feel safe and included in their chosen community - regardless of the ...

Balsam Place - Appaloosa HEARTH -Connective

Connective is a social services nonprofit with a long history of supporting people in BC. Our housing programs are person-centered, meaning we tailor our services to the people we serve.

About Us - Connective

At Connective, we believe that person-centred service and public accountability go hand in hand. Every dollar invested in our programs and services is carefully stewarded to help meet the ...

Non Profit Jobs - Careers with Connective

Start your career with Connective. We're hiring direct support, administrative, and management non profit jobs across BC and the Yukon.

927 Main Transitional Housing - Connective

Connective's transitional housing program at 927 Main St. provides safe and secure housing with supports to people experiencing homelessness

Housing - Connective

Residents may live in a Connective housing program, or a community setting. Supportive Housing also includes programs designed for those under the care of Community Living BC (CLBC), ...

Northern BC Therapeutic Community (NBCTC) - connective.ca

Once you have been referred, the next step is to complete this application package with the help of a community service professional. If you need help completing the application, please ...

Social Services - Connective

Service Categories Service Search Services Connective is partnering with VCH to operate a new community of care model designed to support the complex mental health and substance use ...

Community Living BC - Connective

Our Community Living services support adults under the care of Community Living BC (CLBC) to achieve greater independence

Our Work - Connective | Non Profit Organization

Connective's approach is person-centered, holistic, and strengths-based. Our non profit organization continues to evolve to reflect the needs of our communities.

Unlock the secrets of the connective tissue matrix with our comprehensive worksheet answers.

Enhance your understanding today! Learn more now.

[Back to Home](#)