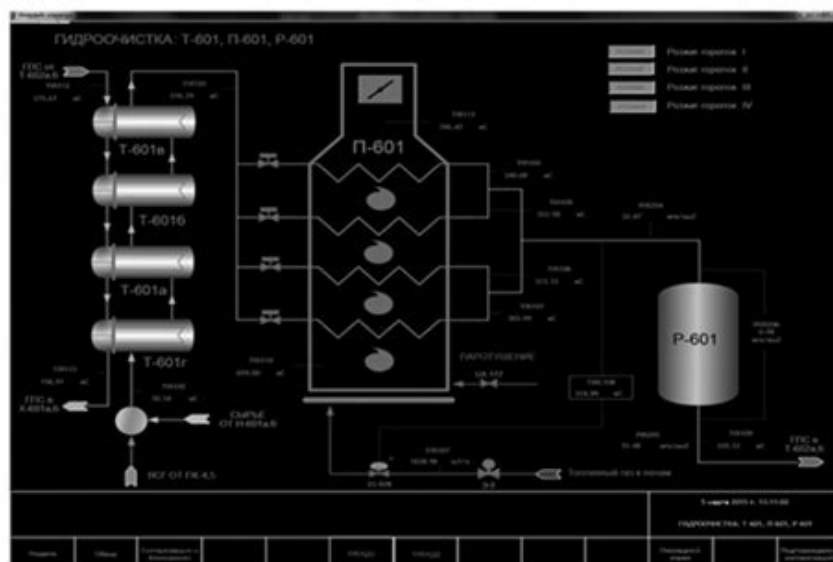
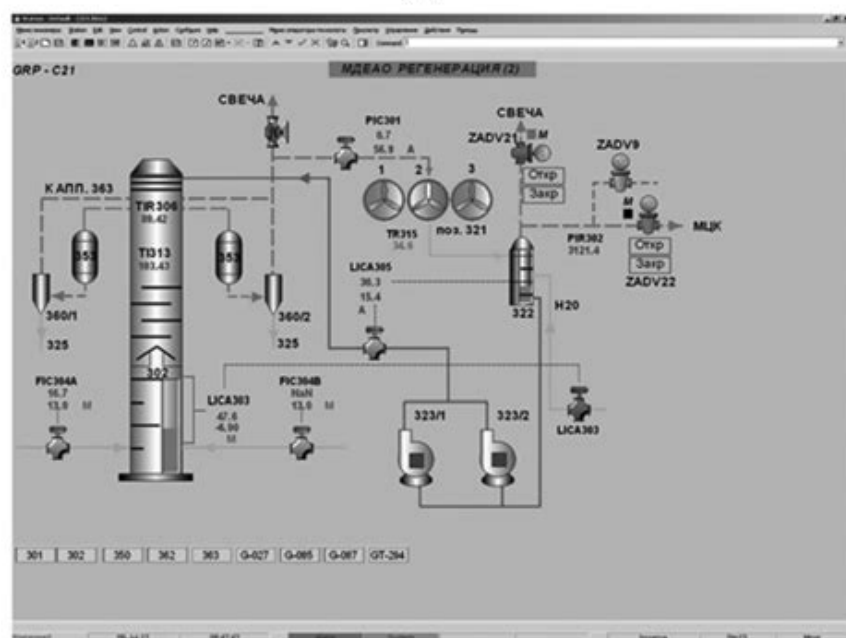


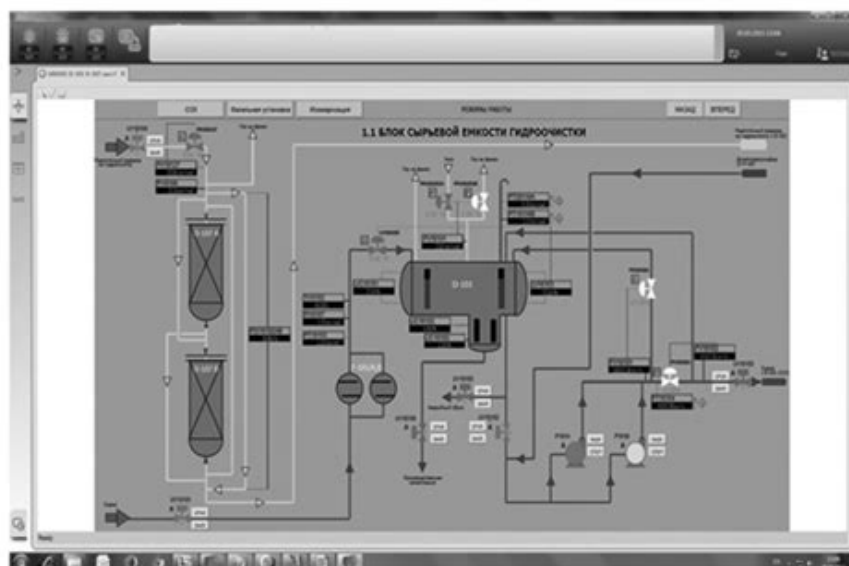
Console Operator Basic Requirements Assessment



(a)



(b)



(c)

Console operator basic requirements assessment is a critical process in various industries, particularly in fields like telecommunications, broadcasting, and information technology. Console operators are responsible for monitoring and managing various systems, ensuring smooth operations, and providing timely responses to issues as they arise. This article delves into the essential requirements for console operators, exploring the skills, knowledge, and qualifications necessary for success in this role.

Understanding the Role of a Console Operator

Console operators play a pivotal role in managing the flow of information and communication within their respective organizations. Their responsibilities often include:

- Monitoring systems and alerts for potential issues.
- Responding to inquiries and providing support to clients and staff.
- Managing the operation of hardware and software systems.
- Documenting incidents, resolutions, and operational procedures.
- Collaborating with other team members to ensure efficient workflows.

Given the critical nature of their work, the requirements for console operators must be assessed thoroughly to ensure that candidates possess the necessary skills and knowledge to perform effectively.

Key Competencies for Console Operators

To succeed as a console operator, individuals must develop a diverse set of competencies. The following categories outline the key competencies necessary for the role:

Technical Skills

1. **System Knowledge:** Console operators must be familiar with the specific systems and software used in their organization. This can include:

- Operating systems (e.g., Windows, Linux)
- Networking protocols
- Database management systems
- Monitoring tools and software

2. **Troubleshooting Skills:** The ability to diagnose and resolve issues quickly is vital. Console operators should be adept at:

- Identifying symptoms of problems
- Following procedures to troubleshoot common issues
- Escalating incidents to appropriate technical teams when necessary

3. **Data Management:** Operators often work with large sets of data and must:

- Understand data entry and retrieval processes
- Utilize data analysis tools to monitor trends

- Ensure data integrity and security protocols are followed

Communication Skills

Effective communication is essential for console operators, as they often serve as the first point of contact for issues:

- Verbal Communication: Operators should be able to convey information clearly and succinctly to clients and team members.
- Written Communication: Documentation skills are crucial for maintaining logs and reports. Operators should be proficient in writing incident reports and operational procedures.
- Interpersonal Skills: Building relationships with team members and clients can significantly impact operational efficiency and customer satisfaction.

Organizational Skills

Organizational skills are vital in managing multiple tasks effectively. Console operators should:

- Prioritize tasks based on urgency and importance.
- Maintain accurate records of incidents and resolutions.
- Implement time management techniques to ensure timely responses to issues.

Educational and Professional Requirements

While technical skills and competencies are critical, formal education and professional experience also play significant roles in the assessment of console operator qualifications.

Educational Background

1. High School Diploma or Equivalent: Most entry-level positions require at least a high school diploma. However, higher educational qualifications can enhance a candidate's prospects, such as:

- Associate's degree in Information Technology or a related field.
- Bachelor's degree in Computer Science, Information Systems, or a similar discipline.

2. Certification Programs: Various certifications can boost a candidate's qualifications, including:

- CompTIA A+ (for general IT skills)
- Cisco Certified Network Associate (CCNA)
- Microsoft Certified Solutions Expert (MCSE)

Professional Experience

- Entry-Level Experience: Many employers prefer candidates with some hands-on experience, which can be obtained through internships or part-time work in IT support or customer service roles.
- Advanced Roles: For more advanced positions, candidates may need several years of experience in specific areas, such as system administration, network management, or technical support.

Soft Skills Considerations

In addition to technical skills and formal qualifications, soft skills are vital for console operators. These skills help them navigate the often high-pressure environments in which they work.

Problem-Solving Skills

Console operators frequently face unexpected challenges. Strong problem-solving abilities enable them to think critically and devise effective solutions quickly. This includes:

- Assessing situations pragmatically.
- Evaluating potential solutions and outcomes.
- Implementing fixes while minimizing disruptions.

Stress Management

Working as a console operator can be stressful due to the fast-paced nature of the job. Effective stress management techniques can include:

- Practicing mindfulness or relaxation techniques.
- Staying organized to manage workloads effectively.
- Seeking support from colleagues when needed.

Adaptability

The ability to adapt to new technologies and processes is crucial. Console operators should:

- Stay updated on industry trends and advancements.
- Be open to learning new systems and software.
- Demonstrate flexibility in adjusting to changing work environments and demands.

Assessment Techniques for Console Operator Candidates

When evaluating candidates for console operator positions, organizations can utilize various assessment techniques to ensure they meet the required qualifications.

Interviews

Structured interviews can help assess candidates' technical knowledge and soft skills. Interviewers should focus on:

- Behavioral questions to gauge problem-solving abilities.
- Technical questions to evaluate system knowledge and troubleshooting skills.
- Situational questions to understand how candidates would handle specific scenarios.

Practical Assessments

Conducting practical assessments can provide insight into a candidate's hands-on abilities. This can include:

- Simulated troubleshooting scenarios.
- Tests on specific software or systems relevant to the job.
- Role-playing exercises to evaluate communication and interpersonal skills.

Reference Checks

Contacting previous employers or references can provide valuable information about a candidate's work ethic, reliability, and overall performance in similar roles.

Conclusion

In conclusion, the assessment of basic requirements for console operators is a multi-faceted process that encompasses technical skills, educational qualifications, soft skills, and practical experience. By understanding the key competencies necessary for success in this role and employing effective assessment techniques, organizations can identify candidates who are well-suited to meet the demands of console operation. As technology continues to evolve, so too will the requirements for console operators, necessitating ongoing training and development to maintain proficiency in an ever-changing landscape. Ultimately, investing in the right candidates for console operator roles is essential for ensuring the smooth operation of critical systems and delivering exceptional service to clients and stakeholders.

Frequently Asked Questions

What are the primary responsibilities of a console operator?

A console operator is responsible for monitoring and controlling systems from a central console, managing alarms, ensuring system stability, and coordinating responses to incidents.

What basic qualifications are typically required for a console operator position?

Typically, a high school diploma or equivalent is required, along with proficiency in computer systems, strong communication skills, and the ability to work under pressure.

What skills are essential for a successful console operator?

Essential skills include attention to detail, problem-solving abilities, multitasking, technical knowledge of the systems being monitored, and effective communication.

Is prior experience necessary to become a console operator?

While prior experience in a related field can be beneficial, many entry-level positions may not require it, as on-the-job training is often provided.

What kind of training do console operators typically receive?

Training usually includes system operation procedures, emergency response protocols, and software usage, often supplemented with simulations and shadowing experienced operators.

What are some common tools and technologies used by console operators?

Console operators commonly use monitoring software, communication tools, alarm management systems, and reporting tools to track system performance and incidents.

How important is teamwork for a console operator?

Teamwork is crucial, as console operators often need to collaborate with other operators, technical teams, and management to ensure efficient system operation and incident response.

What safety protocols should console operators be familiar with?

Console operators should be familiar with emergency procedures, incident reporting protocols, and safety regulations relevant to the systems they monitor to ensure a safe working environment.

Find other PDF article:

<https://soc.up.edu.ph/38-press/Book?docid=sfb53-3576&title=logitech-circle-view-doorbell-manual.pdf>

Console Operator Basic Requirements Assessment

Shelltty console -

Console CPU

-

/console cameraDistanceMaxZoomFactor 2.6 /run SetCVar ("cameraDistanceMaxZoomFactor", 2.6) ,lua, ,

chrome console -

chrome console 2021-08-03 8974 chrome console, dell7040 Windows10 chrome9.0

Rust Console Version S[X Unplayable - Microsoft Community

Jun 9, 2025 · I downloaded the new Rust version for newer consoles. Installed it now problem. Have the ultimate Edition purchased and installed. I click to load into it, and my Xbox redirected me to the game in the

Win10 Realtek -

Realtek win7 ... win10 ...

How did I get console banned - Microsoft Community

Feb 20, 2025 · I realize that you've encountered a problem with your console got banned and I understand how you feel. According to what you described, your console and account have been banned.

-

Oct 20, 2015 · F12

WOW -

/console floatingCombatTextCombatDamage 1 (,1,0)/console floatingCombatTextCombatHealing 1 (,1,0)

steam console -

Dec 22, 2017 · 6/6 steam console 1 STEAM
CONSOLE STEAMCONSOLE STEAM 2017-12-22

Xbox One light constantly flashing on console after turning off

Apr 8, 2014 · Anyone else having the issue where the Xbox One light is constantly flashing on the console after turning it off Mines been flashing for atleast 30 minutes and I'm not sure what it means

Shell tty console -

Console Console ...

-

/console cameraDistanceMaxZoomFactor 2.6 /run SetCVar ("cameraDistanceMaxZoomFactor", 2.6) , ...

chrome console -

chrome console 2021-08-03 8974 chrome console ,
dell7040 Windows10 ...

Rust Console Version S[X Unplayable - Microsoft Community

Jun 9, 2025 · I downloaded the new Rust version for newer consoles. Installed it now problem. Have the ultimate Edition purchased and installed. I click to load into it, and my Xbox ...

Win10 Realtek -

Realtek win7 ...

How did I get console banned - Microsoft Community

Feb 20, 2025 · I realize that you've encountered a problem with your console got banned and I understand how you feel. According to what you described, your console and account have ...

-

Oct 20, 2015 · F12

WOW -

:/console floatingCombatTextCombatDamage 1 (,1,0)/console ...

steam console -

Dec 22, 2017 · 6/6 steam console 1 STEAM
CONSOLE ...

Xbox One light constantly flashing on console after turning off

Apr 8, 2014 · Anyone else having the issue where the Xbox One light is constantly flashing on the console after turning it off Mines been flashing for atleast 30 minutes and I'm not sure what it ...

"Discover the essential console operator basic requirements assessment to ensure your readiness for the role. Learn more and enhance your skills today!"

[Back to Home](#)