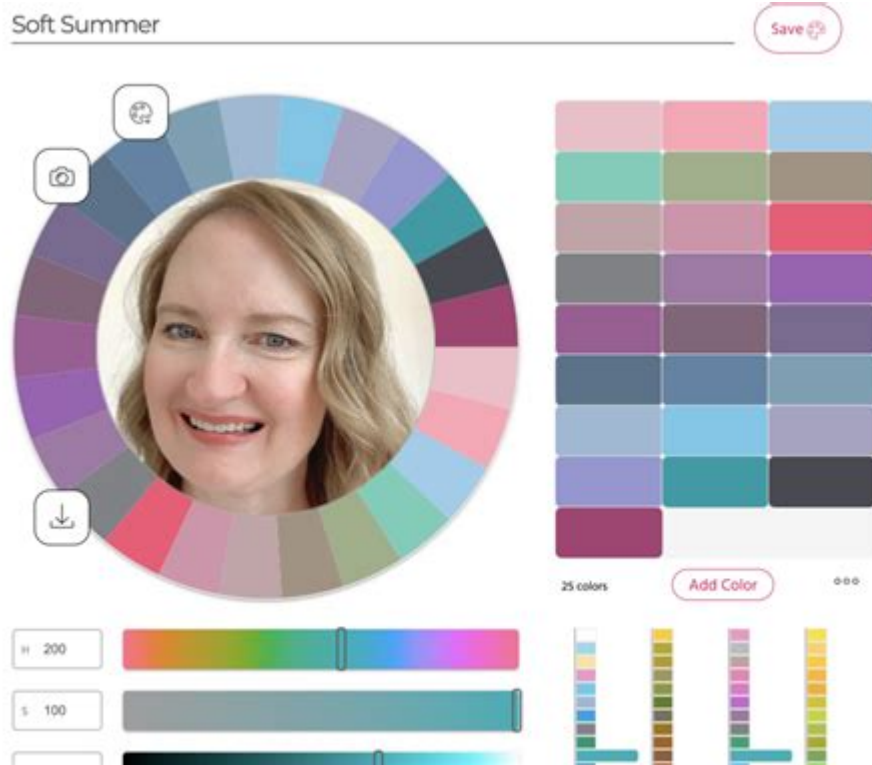


Color Me Color Analysis



COLOR ME COLOR ANALYSIS IS AN ESSENTIAL TOOL FOR ANYONE LOOKING TO ENHANCE THEIR PERSONAL STYLE THROUGH THE STRATEGIC USE OF COLOR. THIS METHOD INVOLVES DETERMINING AN INDIVIDUAL'S UNIQUE COLOR PALETTE BASED ON THEIR SKIN TONE, HAIR COLOR, AND EYE COLOR. BY UNDERSTANDING WHICH SHADES COMPLEMENT THEIR NATURAL FEATURES, INDIVIDUALS CAN MAKE INFORMED CHOICES ABOUT CLOTHING, MAKEUP, AND ACCESSORIES, LEADING TO A MORE HARMONIOUS AND CONFIDENT APPEARANCE. THIS ARTICLE WILL EXPLORE THE PRINCIPLES OF COLOR ANALYSIS, THE DIFFERENT SEASONAL PAlettes, AND HOW TO APPLY THIS KNOWLEDGE TO YOUR WARDROBE.

UNDERSTANDING COLOR THEORY

COLOR THEORY IS THE FOUNDATION OF COLOR ME COLOR ANALYSIS, PROVIDING INSIGHT INTO HOW COLORS INTERACT AND INFLUENCE PERCEPTIONS. HERE ARE SOME BASIC CONCEPTS:

1. THE COLOR WHEEL

THE COLOR WHEEL IS A VISUAL REPRESENTATION OF COLORS ARRANGED ACCORDING TO THEIR CHROMATIC RELATIONSHIP.

- PRIMARY COLORS: RED, BLUE, AND YELLOW—THESE COLORS CANNOT BE CREATED BY MIXING OTHER COLORS.
- SECONDARY COLORS: GREEN, ORANGE, AND PURPLE—THESE ARE MADE BY MIXING TWO PRIMARY COLORS.
- TERTIARY COLORS: THESE ARE THE RESULT OF MIXING A PRIMARY COLOR WITH A SECONDARY COLOR, RESULTING IN SHADES LIKE RED-ORANGE AND BLUE-GREEN.

UNDERSTANDING THE COLOR WHEEL HELPS IN IDENTIFYING COMPLEMENTARY COLORS (COLORS OPPOSITE EACH OTHER ON THE WHEEL) AND ANALOGOUS COLORS (COLORS NEXT TO EACH OTHER), WHICH CAN BE USED STRATEGICALLY IN WARDROBE CHOICES.

2. WARM VS. COOL TONES

ANOTHER FUNDAMENTAL ASPECT OF COLOR ANALYSIS IS DISTINGUISHING BETWEEN WARM AND COOL TONES.

- WARM TONES: COLORS THAT HAVE YELLOW, ORANGE, OR RED UNDERTONES, SUCH AS GOLDEN YELLOWS, WARM REDS, AND EARTHY BROWNS.
- COOL TONES: COLORS WITH BLUE, GREEN, OR PURPLE UNDERTONES, LIKE ICY BLUES, COOL GREENS, AND JEWEL TONES.

RECOGNIZING YOUR UNDERTONE IS CRUCIAL FOR SELECTING COLORS THAT ENHANCE YOUR NATURAL BEAUTY.

3. THE IMPORTANCE OF LIGHTING

THE WAY COLORS APPEAR CAN CHANGE DRAMATICALLY UNDER DIFFERENT LIGHTING CONDITIONS. NATURAL DAYLIGHT IS THE BEST LIGHT FOR ASSESSING COLOR, AS IT REVEALS TRUE UNDERTONES. ARTIFICIAL LIGHTING CAN ADD WARMTH OR COOLNESS, AFFECTING HOW COLORS ARE PERCEIVED.

THE FOUR SEASONAL PALETTES

COLOR ME COLOR ANALYSIS CATEGORIZES INDIVIDUALS INTO FOUR SEASONAL PALETTES: WINTER, SPRING, SUMMER, AND AUTUMN. EACH SEASON REPRESENTS A DISTINCT SET OF COLORS THAT HARMONIZE WITH CERTAIN SKIN TONES, HAIR COLORS, AND EYE COLORS.

1. WINTER PALETTE

THE WINTER PALETTE TYPICALLY SUITS INDIVIDUALS WITH COOL UNDERTONES.

- CHARACTERISTICS:
 - SKIN: FAIR TO DEEP WITH A COOL UNDERTONE.
 - HAIR: DARK BROWN, BLACK, OR COOL BLONDE.
 - EYES: BRIGHT, ICY COLORS LIKE BLUE, GRAY, OR COOL BROWN.
- COLORS:
 - JEWEL TONES: EMERALD GREEN, SAPPHIRE BLUE, AND RICH PURPLE.
 - HIGH-CONTRAST COMBINATIONS: BLACK AND WHITE, OR NAVY AND BRIGHT COLORS.

2. SPRING PALETTE

THE SPRING PALETTE IS IDEAL FOR THOSE WITH WARM UNDERTONES.

- CHARACTERISTICS:
 - SKIN: FAIR WITH GOLDEN OR PEACHY UNDERTONES.
 - HAIR: LIGHT BLONDE, AUBURN, OR WARM BROWN.
 - EYES: BRIGHT BLUE, GREEN, OR WARM HAZEL.
- COLORS:
 - LIGHT, WARM SHADES: CORAL, PEACH, AND WARM PASTELS.
 - BRIGHT AND CLEAR COLORS: SUNSHINE YELLOW AND TURQUOISE.

3. SUMMER PALETTE

THE SUMMER PALETTE IS FOR INDIVIDUALS WITH COOL UNDERTONES, BUT SOFTER AND MORE MUTED THAN WINTER.

- CHARACTERISTICS:
- SKIN: LIGHT TO MEDIUM WITH COOL UNDERTONES, OFTEN WITH PINK HUES.
- HAIR: ASHY BLONDE, LIGHT BROWN, OR SOFT BLACK.
- EYES: SOFT BLUE, GRAY, OR COOL GREEN.
- COLORS:
- SOFT AND MUTED SHADES: DUSTY PINK, LAVENDER, AND SOFT BLUES.
- COOL PASTELS: POWDER BLUE AND MINT GREEN.

4. AUTUMN PALETTE

THE AUTUMN PALETTE IS SUITED FOR INDIVIDUALS WITH WARM UNDERTONES, SIMILAR TO SPRING BUT DEEPER AND RICHER.

- CHARACTERISTICS:
- SKIN: WARM BEIGE, OLIVE, OR DEEP BRONZE.
- HAIR: RED, GOLDEN BLONDE, OR DEEP BROWN.
- EYES: WARM BROWN, GREEN, OR HAZEL.
- COLORS:
- EARTHY TONES: OLIVE GREEN, BURNT ORANGE, AND MUSTARD YELLOW.
- RICH, WARM SHADES: BRICK RED AND DEEP TEAL.

HOW TO DETERMINE YOUR SEASONAL PALETTE

IDENTIFYING YOUR SEASONAL PALETTE INVOLVES SEVERAL STEPS, WHICH CAN BE DONE AT HOME OR WITH THE HELP OF A PROFESSIONAL COLOR ANALYST.

1. ASSESS YOUR UNDERTONE

TO DETERMINE WHETHER YOU HAVE WARM OR COOL UNDERTONES, TRY THE FOLLOWING METHODS:

- VEIN TEST: LOOK AT THE VEINS ON YOUR WRIST. IF THEY APPEAR BLUE, YOU LIKELY HAVE COOL UNDERTONES; IF THEY LOOK GREEN, YOU HAVE WARM UNDERTONES.
- JEWELRY TEST: HOLD GOLD AND SILVER JEWELRY AGAINST YOUR SKIN. IF GOLD COMPLEMENTS YOUR SKIN BETTER, YOU'RE WARM-TONED; IF SILVER IS MORE FLATTERING, YOU'RE COOL-TONED.
- WHITE PAPER TEST: HOLD A PIECE OF WHITE PAPER NEXT TO YOUR FACE. IF YOUR SKIN LOOKS YELLOWISH AGAINST THE WHITE, YOU'RE WARM-TONED; IF IT LOOKS PINK OR ROSY, YOU'RE COOL-TONED.

2. EXPERIMENT WITH COLORS

ONCE YOU'VE ESTABLISHED YOUR UNDERTONE, GATHER CLOTHING ITEMS OR FABRIC SWATCHES IN VARIOUS COLORS FROM YOUR IDENTIFIED SEASONAL PALETTE. TRY THEM ON IN NATURAL LIGHT AND OBSERVE WHICH COLORS BRIGHTEN YOUR COMPLEXION AND WHICH ONES WASH YOU OUT.

3. SEEK PROFESSIONAL HELP

FOR A MORE PRECISE ANALYSIS, CONSIDER CONSULTING A PROFESSIONAL COLOR ANALYST. THEY CAN PROVIDE TAILORED ADVICE AND HELP YOU UNDERSTAND YOUR UNIQUE PALETTE MORE DEEPLY.

APPLYING COLOR ANALYSIS TO YOUR WARDROBE

ONCE YOU'VE IDENTIFIED YOUR SEASONAL PALETTE, IT'S TIME TO INCORPORATE THESE COLORS INTO YOUR WARDROBE.

1. BUILDING A CAPSULE WARDROBE

A CAPSULE WARDROBE IS A CURATED COLLECTION OF VERSATILE CLOTHING ITEMS THAT CAN BE MIXED AND MATCHED. HERE'S HOW TO CREATE ONE USING YOUR SEASONAL PALETTE:

- CHOOSE A BASE COLOR: SELECT A COLOR FROM YOUR SEASONAL PALETTE THAT WILL SERVE AS YOUR BASE, LIKE NAVY FOR WINTER OR OLIVE FOR AUTUMN.
- ADD ACCENT COLORS: INCORPORATE ACCENT COLORS THAT COMPLEMENT YOUR BASE COLOR, ALLOWING FOR VARIETY WHILE MAINTAINING HARMONY.
- INCORPORATE NEUTRALS: INCLUDE NEUTRAL SHADES THAT WORK WELL WITH YOUR PALETTE, SUCH AS WHITE, GRAY, OR BEIGE.

2. ACCESSORIZING WITH COLOR

ACCESSORIES ARE A GREAT WAY TO INTRODUCE COLOR WITHOUT OVERWHELMING YOUR OUTFIT. CONSIDER:

- SCARVES: A BRIGHTLY COLORED SCARF CAN LIVEN UP A NEUTRAL OUTFIT.
- JEWELRY: CHOOSE GEMSTONES OR METALS THAT ALIGN WITH YOUR SEASONAL PALETTE.
- HANDBAGS AND SHOES: OPT FOR BAGS AND SHOES THAT ADD A POP OF COLOR THAT SUITS YOUR PALETTE.

3. MAKEUP CHOICES

COLOR ANALYSIS CAN ALSO INFLUENCE YOUR MAKEUP SELECTION. HERE ARE SOME TIPS:

- FOUNDATION: CHOOSE SHADES THAT MATCH YOUR UNDERTONE.
- EYESHADOW: SELECT COLORS THAT ENHANCE YOUR EYE COLOR AND COMPLEMENT YOUR SKIN TONE.
- LIPSTICK: PICK LIP COLORS THAT HARMONIZE WITH YOUR OVERALL PALETTE, WHETHER THAT'S A BOLD RED FOR WINTER OR A SOFT PEACH FOR SPRING.

CONCLUSION

COLOR ME COLOR ANALYSIS IS A POWERFUL TOOL THAT CAN TRANSFORM HOW YOU PERCEIVE YOURSELF AND HOW OTHERS PERCEIVE YOU. BY UNDERSTANDING THE COLORS THAT ENHANCE YOUR NATURAL BEAUTY, YOU CAN MAKE INFORMED CHOICES THAT REFLECT YOUR PERSONALITY AND STYLE. WHETHER YOU DECIDE TO EMBRACE YOUR SEASONAL PALETTE IN YOUR CLOTHING, ACCESSORIES, OR MAKEUP, THIS KNOWLEDGE WILL EMPOWER YOU TO EXPRESS YOURSELF CONFIDENTLY AND AUTHENTICALLY. EMBRACE THE JOURNEY OF COLOR DISCOVERY AND ENJOY THE VIBRANT WORLD IT OPENS UP!

FREQUENTLY ASKED QUESTIONS

WHAT IS COLOR ME COLOR ANALYSIS?

COLOR ME COLOR ANALYSIS IS A PERSONALIZED COLOR MATCHING SYSTEM THAT HELPS INDIVIDUALS IDENTIFY THEIR BEST COLORS BASED ON THEIR SKIN TONE, HAIR COLOR, AND EYE COLOR. THIS METHOD AIMS TO ENHANCE ONE'S APPEARANCE BY PROVIDING A PALETTE OF COLORS THAT COMPLEMENT THEIR NATURAL FEATURES.

HOW DOES COLOR ME COLOR ANALYSIS DIFFER FROM TRADITIONAL COLOR ANALYSIS METHODS?

COLOR ME COLOR ANALYSIS FOCUSES MORE ON THE EMOTIONAL AND PSYCHOLOGICAL ASPECTS OF COLOR, CONSIDERING HOW DIFFERENT SHADES CAN AFFECT MOOD AND SELF-PERCEPTION, WHEREAS TRADITIONAL METHODS PRIMARILY CATEGORIZE COLORS BASED ON SEASONAL PALETTES WITHOUT AS MUCH EMPHASIS ON PERSONAL IMPACT.

CAN COLOR ME COLOR ANALYSIS BE BENEFICIAL FOR FASHION CHOICES?

YES, COLOR ME COLOR ANALYSIS CAN SIGNIFICANTLY ENHANCE FASHION CHOICES BY GUIDING INDIVIDUALS TOWARD COLORS THAT NOT ONLY FLATTER THEIR PHYSICAL APPEARANCE BUT ALSO RESONATE WITH THEIR PERSONALITY, HELPING THEM TO FEEL MORE CONFIDENT AND AUTHENTIC IN THEIR CLOTHING SELECTIONS.

IS COLOR ME COLOR ANALYSIS APPLICABLE FOR MAKEUP SELECTION?

ABSOLUTELY! COLOR ME COLOR ANALYSIS CAN BE APPLIED TO MAKEUP SELECTION BY HELPING INDIVIDUALS CHOOSE SHADES FOR FOUNDATION, LIPSTICK, EYESHADOW, AND BLUSH THAT HARMONIZE WITH THEIR UNIQUE COLOR PALETTE, RESULTING IN A MORE COHESIVE AND FLATTERING LOOK.

HOW CAN SOMEONE GET STARTED WITH COLOR ME COLOR ANALYSIS?

TO GET STARTED WITH COLOR ME COLOR ANALYSIS, INDIVIDUALS CAN SEEK OUT CERTIFIED COLOR ANALYSTS WHO OFFER CONSULTATIONS OR WORKSHOPS, OR THEY CAN EXPLORE ONLINE RESOURCES AND GUIDES THAT PROVIDE SELF-ASSESSMENT TOOLS TO HELP THEM IDENTIFY THEIR BEST COLORS.

Find other PDF article:

<https://soc.up.edu.ph/15-clip/files?dataid=WtR05-6801&title=crowdsurf-transcription-assessment-answers.pdf>

Color Me Color Analysis

Carter Lumber

Carter Lumber is dedicated to providing exceptional service and quality building materials at competitive prices to our family of customers.

Locations - Carter Lumber

With 90+ years in business, you can trust Carter Lumber for all your house building material needs. 170+ Stores. Click to find a local lumber yard near you!

Building Materials & Supplies | Full Product Selection | Carter Lumber

In every market we service, we are the building materials supplier of choice. From framing lumber to finishes, Carter Lumber offers a full range of building materials for every phase of construction. ...

Premium Lumber Products | Treated & Untreated Lumber - Carter Lumber

Since 1932, Carter Lumber has been a trusted source for high-quality lumber. Choose from treated or untreated options with fewer defects and superior value. See our vendors now.

Kitchen & Bath Design Services - Carter Lumber

Carter Lumber Kitchen & Bath offers expert design services, cabinetry, and countertops for new homes and residential projects. Trusted by builders, contractors, and homeowners.

Search Carter Lumber Products and Services

In every market we service, we are the building materials supplier of choice. Search the Carter Lumber website to find the right products and services for your next project.

DeWitt Lumber Co. - Blanchard, MI - Home

Headquartered in Blanchard Michigan, we have 5 locations throughout Central Michigan. Our experienced staff focuses on customer service and personal attention to each project we supply. ...

Contact Us - Carter Lumber

Carter-Jones Companies, Inc. is a privately-owned corporation headquartered in Kent, Ohio. You can reach our Corporate Office with the information below: In every market we service, we are ...

Building Supplies - Carter Lumber

Since 1932, we are the building materials supplier of choice in every market we service.

Carter Lumber | Monroe MI - Facebook

Carter Lumber offers pre-fabricated wall panels and roof and floor trusses for faster, more proficient construction. Our manufacturing facilities save you time and money with our efficient ...

Sirens (2025) | Netflix | DonanımHaber Forum

May 12, 2025 · Netflix'in yeni mini dizisi Sirens'ın fragmanı bizi yıldızlarla dolu bir karakter kadrosunun yaşadığı gizemli bir sahil malikanesine davet ediyor.

Netflix'te hangi diziler izlenmeli? - 10

Mar 21, 2024 · Netflix'te 80'li yılların popüler dizileri Neflix'te yeniden yayınlanıyor. İzlemeniz gereken diziler ...

Netflix'te hangi diziler izlenmeli? - 10

Dec 11, 2024 · Netflix'te 80'li yılların popüler dizileri Neflix'te yeniden yayınlanıyor. İzlemeniz gereken diziler ...

Netflix'te hangi diziler izlenmeli? - 10

Netflix'te 80'li yılların popüler dizileri Neflix'te yeniden yayınlanıyor. İzlemeniz gereken diziler ...

Netflix'te hangi diziler izlenmeli? Too Hot to Handle

Netflix'te 80'li yılların popüler dizileri Neflix'te yeniden yayınlanıyor. İzlemeniz gereken diziler ...

Netflix'te hangi diziler izlenmeli? - 10

Netflix'te 80'li yılların popüler dizileri Neflix'te yeniden yayınlanıyor. İzlemeniz gereken diziler ...

Netflix The Naked ...
Netflix Toru Muranishi ...

Netflix -
Dec 11, 2024 · Netflix ...

Netflix 3 2025 ...
Netflix 3 2025 60%

Netflix -
2011 1 ...

Unlock your true colors with our guide to Color Me Color Analysis. Discover how to enhance your wardrobe and boost your confidence. Learn more today!

[Back to Home](#)