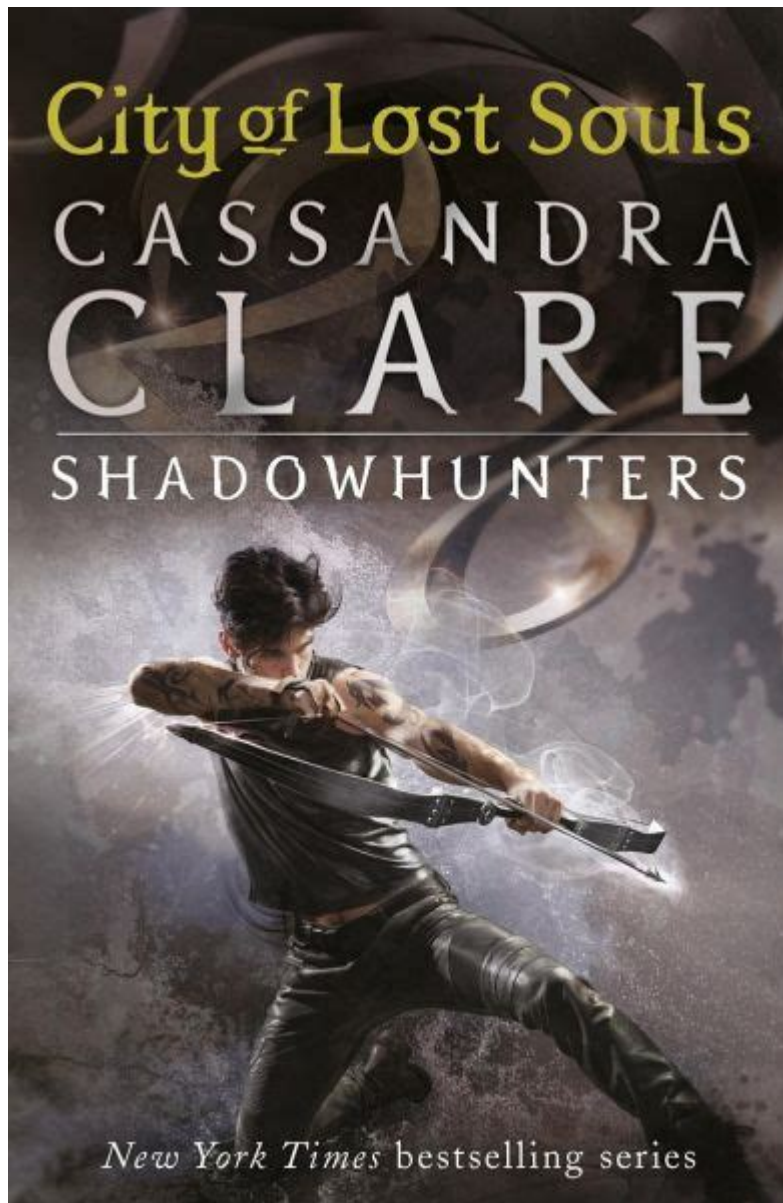


City Of Lost Souls Cassandra Clare



City of Lost Souls is the fifth installment in Cassandra Clare's popular "The Mortal Instruments" series, which has captivated readers with its blend of urban fantasy, romance, and adventure. Published in 2012, this novel continues the story of Clary Fray, Jace Herondale, and their friends as they face new challenges in their fight against dark forces. Set against the backdrop of a richly imagined world filled with Shadowhunters, Downworlders, and various supernatural beings, "City of Lost Souls" expands the narrative with complex characters, emotional arcs, and thrilling plot developments.

Overview of the Mortal Instruments Series

The Premise

"The Mortal Instruments" series is set in a contemporary world where Shadowhunters, humans with angelic blood, protect the mundane (ordinary humans) from demons and other supernatural threats. The first book, "City of Bones," introduces Clary Fray, a seemingly ordinary teenager who discovers

her heritage as a Shadowhunter after witnessing a murder in a nightclub. As she delves deeper into this hidden world, she encounters various characters, including Jace Herondale, Isabelle Lightwood, and Alec Lightwood, who become her allies in the fight against evil.

The Series So Far

1. City of Bones (2007)
2. City of Ashes (2008)
3. City of Glass (2009)
4. City of Fallen Angels (2011)
5. City of Lost Souls (2012)
6. City of Heavenly Fire (2014)

With each installment, Clare deepens the lore of the Shadowhunter world, introducing readers to its rules, struggles, and history. The series explores themes of love, sacrifice, and identity, resonating with a diverse audience.

Characters in City of Lost Souls

Main Characters

- Clary Fray: The protagonist, Clary is a young Shadowhunter who is determined to rescue Jace from the clutches of the villainous Sebastian Morgenstern.
- Jace Herondale: Clary's love interest, Jace grapples with his identity and the consequences of his bond with Sebastian.
- Sebastian Morgenstern: The antagonist, Sebastian is Clary's brother and a powerful figure who seeks to dominate both the Shadowhunter and Downworlder worlds.
- Simon Lewis: Clary's best friend who has become a vampire, Simon navigates his new life while supporting Clary on her quest.
- Isabelle Lightwood: A fierce Shadowhunter and Clary's friend, Isabelle provides both combat skills and emotional support.

Supporting Characters

- Alec Lightwood: A skilled Shadowhunter and Isabelle's brother, Alec's protective nature and struggles with his identity play a significant role in the narrative.
- Magnus Bane: A powerful warlock and Alec's romantic partner, Magnus adds depth to the story with his humor and wisdom.
- Luke Garroway: Clary's adoptive father, Luke's loyalty and bravery are vital in the fight against Sebastian.

Plot Summary

"City of Lost Souls" picks up shortly after the events of "City of Fallen Angels." Clary is determined to save Jace, who has been taken by Sebastian and is now a pawn in his brother's twisted game. The novel follows Clary and her friends as they navigate the dangerous world of Shadowhunters and Downworlders, facing various challenges along the way.

Key Plot Points

1. The Search for Jace: Clary's quest to rescue Jace drives the narrative, highlighting her

determination and the depth of their bond.

2. Sebastian's Plan: As Sebastian seeks to create an army of Shadowhunters under his control, the stakes rise for Clary and her friends.

3. Clary's Growth: Throughout the novel, Clary evolves from a naive teenager into a more confident and resourceful Shadowhunter.

4. Love and Sacrifice: The relationships between the characters deepen, exploring themes of love, loyalty, and sacrifice.

Themes Explored

- Identity and Belonging: Characters grapple with their identities as Shadowhunters, vampires, and warlocks, questioning where they truly belong.

- Family Dynamics: The complex relationships between siblings, particularly between Clary and Sebastian, are central to the story.

- The Nature of Good and Evil: The novel blurs the lines between good and evil, showcasing how love can be both a strength and a weakness.

Writing Style and Reception

Cassandra Clare's writing style is characterized by vivid descriptions, witty dialogue, and emotional depth. Readers are drawn into the world of "The Mortal Instruments" through Clare's ability to create relatable characters and complex relationships. The novel's pacing is brisk, with a mix of action, romance, and humor that keeps readers engaged.

Upon its release, "City of Lost Souls" received positive reviews from both fans and critics. Many praised Clare for her ability to blend fantasy and romance while addressing real-life issues that resonate with young adults. The book's cliffhanger ending left readers eager for the final installment, "City of Heavenly Fire."

Impact on Young Adult Literature

Cassandra Clare's "The Mortal Instruments" series has played a significant role in shaping the landscape of young adult fantasy literature. The books have inspired a dedicated fanbase, leading to:

1. Spin-off Series: The success of "The Mortal Instruments" spawned several spin-off series, including "The Infernal Devices" and "The Dark Artifices."

2. Film and Television Adaptations: The books were adapted into a film in 2013 and a television series, further expanding their reach.

3. Fandom and Community: The series has fostered a vibrant online community, with fans creating fan art, fan fiction, and engaging in discussions about the characters and themes.

Conclusion

"City of Lost Souls" is a pivotal entry in Cassandra Clare's "The Mortal Instruments" series, filled with emotional depth, thrilling action, and intricate character development. As Clary Fray and her friends confront the challenges posed by Sebastian Morgenstern, themes of identity, love, and sacrifice resonate throughout the narrative. The book not only advances the overarching plot but also deepens the connections between its characters, making it a memorable and impactful read for fans of young adult fantasy. With its rich world-building and relatable themes, Clare's work continues to inspire and engage readers around the world.

Frequently Asked Questions

What is the main plot of 'City of Lost Souls'?

In 'City of Lost Souls', Clary Fray and her friends are on a quest to rescue Jace Wayland, who has been taken by the demon Lilith. The story explores themes of love, sacrifice, and the struggle against dark forces.

How does 'City of Lost Souls' connect to the larger Shadowhunter Chronicles?

'City of Lost Souls' is the fifth book in 'The Mortal Instruments' series, which is part of the larger Shadowhunter Chronicles universe created by Cassandra Clare. It builds on the events of the previous books and sets the stage for the final installment.

What are some key character developments in 'City of Lost Souls'?

Key character developments include Clary's growth as a Shadowhunter, Jace's struggle with his identity under Lilith's influence, and Simon's journey towards accepting his vampire nature. The dynamics between these characters evolve significantly throughout the book.

Who is Lilith and what role does she play in 'City of Lost Souls'?

Lilith is a powerful demon who seeks to resurrect her son, Jace. She manipulates him and poses a significant threat to Clary and the other Shadowhunters, driving much of the conflict in the story.

Are there any new characters introduced in 'City of Lost Souls'?

Yes, 'City of Lost Souls' introduces new characters such as Sebastian Morgenstern, who plays a crucial role in the plot, further complicating the relationships and conflicts among the existing characters.

What themes are explored in 'City of Lost Souls'?

The book explores themes of love versus duty, the nature of sacrifice, the influence of familial ties, and the struggle between good and evil, all set against a backdrop of fantastical elements and urban settings.

How does 'City of Lost Souls' differ from previous books in the series?

'City of Lost Souls' takes on a darker tone compared to previous installments, delving deeper into the psychological struggles of the characters, particularly Jace, as they face more intense challenges and moral dilemmas.

What is the significance of the title 'City of Lost Souls'?

The title 'City of Lost Souls' reflects the themes of loss, the struggle for identity, and the characters' search for redemption and belonging amidst chaos, highlighting the emotional and physical battles they face.

What impact did 'City of Lost Souls' have on the Shadowhunter fandom?

'City of Lost Souls' had a significant impact on the Shadowhunter fandom by deepening the lore of the universe and expanding character arcs, generating discussions and theories about the characters' futures and the overarching narrative.

Find other PDF article:

<https://soc.up.edu.ph/64-frame/pdf?ID=Bxw39-2088&title=unitized-experiments-in-organic-chemistry.pdf>

City Of Lost Souls Cassandra Clare

What Is an Asset? Definition, Types, and Examples - Investopedia

Apr 4, 2025 · What Is an Asset? An asset is a resource, tangible or intangible, that holds some monetary value that can be exploited by its owner.

What is an Asset? - Finance Strategists

Apr 25, 2023 · What Is an Asset? An asset is a resource owned by an individual or organization which provides economic value. This includes cash, equipment, property, rights, or anything ...

Asset - Wikipedia

In economics, an asset (economics) is any form in which wealth can be held. There is a growing analytical interest in assets and asset forms in other social sciences too, especially in terms of ...

ASSET Definition & Meaning - Merriam-Webster

The meaning of ASSET is the property of a deceased person subject by law to the payment of his or her debts and legacies. How to use asset in a sentence.

asset noun - Definition, pictures, pronunciation and usage notes ...

Definition of asset noun in Oxford Advanced Learner's Dictionary. Meaning, pronunciation, picture, example sentences, grammar, usage notes, synonyms and more.

ASSET | definition in the Cambridge English Dictionary

ASSET meaning: 1. a useful or valuable quality, skill, or person: 2. something valuable belonging to a person or.... Learn more.

ASSET Definition & Meaning | Dictionary.com

Asset definition: a useful and desirable thing or quality.. See examples of ASSET used in a sentence.

ASSET definition and meaning | Collins English Dictionary

Something or someone that is an asset is considered useful or helps a person or organization to be successful.

Asset - definition of asset by The Free Dictionary

as•set ('æs ɛt) n. 1. a useful and desirable thing or quality: Organizational ability is an asset. 2. a single item of ownership having exchange value.

What Is an Asset? Definition, Examples & More | Capital One

Feb 27, 2023 · The U.S. Securities and Exchange Commission says that assets are “any tangible or intangible item that has value in an exchange.” Simply put, assets are things people or ...

placeholder query for "poll" Crossword Clue - Wordplays.com

Answers for placeholder query for %22poll crossword clue, 7 letters. Search for crossword clues found in the Daily Celebrity, NY Times, Daily Mirror, Telegraph and major publications. Find ...

placeholder + query + for + "poll - Balanced chemical equation ...

Check the balance. Now, both sides have 4 H atoms and 2 O atoms. The equation is balanced. Balancing with algebraic method This method uses algebraic equations to find the correct ...

Placeholder Query Data | TanStack Query React Docs

What is placeholder data? Placeholder data allows a query to behave as if it already has data, similar to the `initialData` option, but the data is not persisted to the cache.

REST: placeholder/parameters in Poll URL on publisher

The REST end point I am hitting has a timestamp parameter which I need to use to poll the data from the endpoint. I would like to update that parameter with every subsequent poll.

Use Poll Widget in your Template - Mailmodo

Jul 22, 2025 · If you want to add Poll below an existing block, click on the Widgets and choose Ratings. Under this, you can drag and drop the Poll widget in editor. ****Step 2:****A poll with ...

Ability for Form Placeholder to poll · filamentphp filament ... - GitHub

Jul 3, 2024 · We make use of Placeholder in forms, to show data related to the entity. For example let's say we have an `EditUser` page and form. We are using Placeholder as an ...

Polling simplified, with React Query (useQuery) (2025)

Jun 29, 2025 · By using React Query, we don't need to do that any more, and it also reduces the need for a lot of boilerplate code. We highly recommend that you test and play around with ...

Placeholder Query Data | Svelte Query | SvelteStack

This comes in handy for situations where you have enough partial (or fake) data to render the query successfully while the actual data is fetched in the background.

place holder query for quit;poll quit Crossword Clue

Answers for place holder query for quit;poll quit crossword clue, 6 letters. Search for crossword clues found in the Daily Celebrity, NY Times, Daily Mirror, Telegraph and major publications.

Placeholders in Questionnaires - Support & Resource Hub

To add a Paragraph in your form, create a new question of the type "Mixed Controls" and add a new item of the type "Paragraph". The Paragraph question item allows you to enter text that ...

Dive into the enchanting world of 'City of Lost Souls' by Cassandra Clare. Uncover secrets

[Back to Home](#)