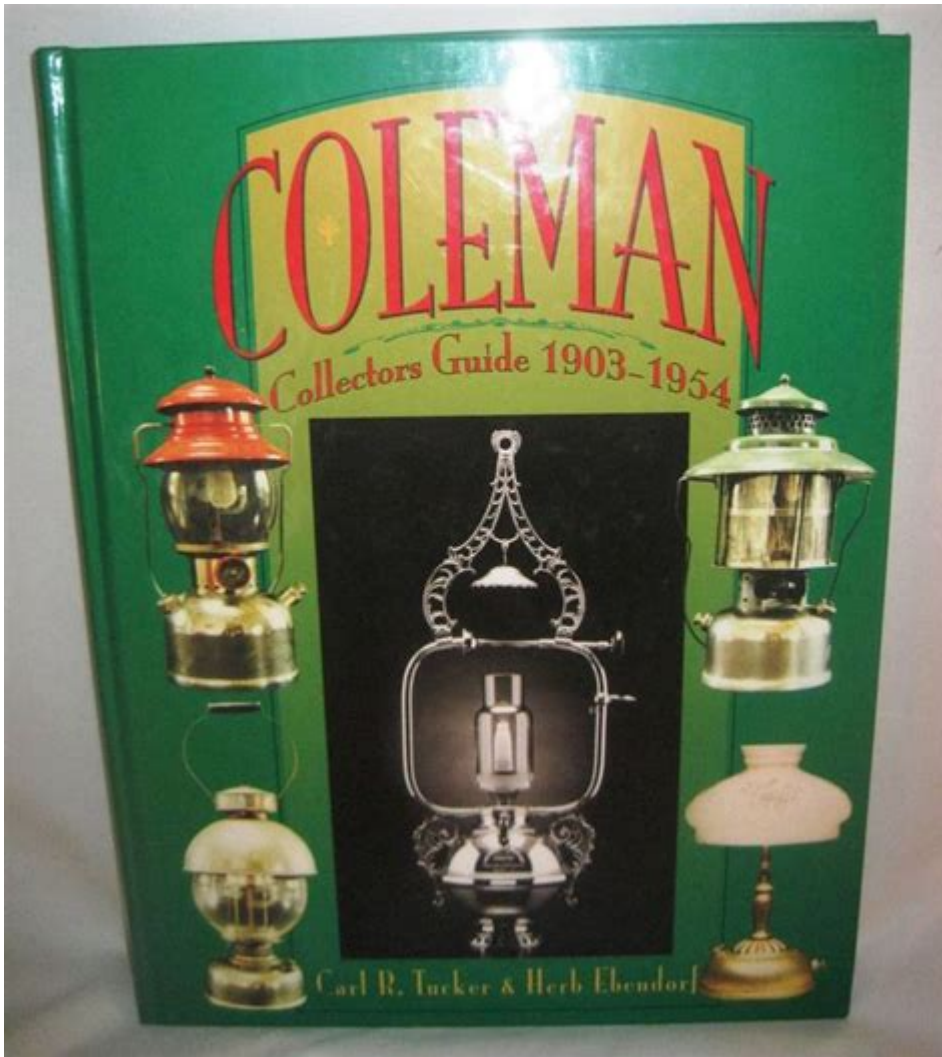


Coleman Lantern Collectors Guide



Coleman lantern collectors guide is an invaluable resource for enthusiasts and collectors of these iconic pieces of outdoor equipment. Coleman lanterns have been a symbol of outdoor adventure for over a century, providing light to campers, hikers, and outdoor enthusiasts alike. This guide aims to delve into the rich history, types, and collecting tips for Coleman lanterns, offering both novice and seasoned collectors insights into this fascinating hobby.

History of Coleman Lanterns

Coleman Company, founded in 1900 by W.C. Coleman, began as a manufacturer of gasoline-powered lanterns. The introduction of the first Coleman lantern in 1914 marked a significant milestone in outdoor lighting equipment. Over the years, Coleman has produced a range of lanterns powered by different fuels, including:

- Kerosene
- Propane

- Electricity
- Battery-operated models

The lanterns have evolved significantly since their inception, with various designs and models released that reflect advancements in technology and changing consumer preferences.

Key Milestones in Coleman Lantern History

1. 1914: Introduction of the first Coleman lantern, the Model 200.
2. 1920s: The introduction of the "Quick-Lite" lantern, which featured an easy-start mechanism.
3. 1930s: The introduction of the popular Model 242, known for its rugged design and reliability.
4. 1950s: The advent of the dual-fuel lanterns, capable of running on gasoline or kerosene.
5. 1980s: Introduction of battery-operated and rechargeable lanterns for convenience.

Types of Coleman Lanterns

Coleman lanterns come in various types, each with distinct features and advantages. Understanding these types is essential for collectors who wish to specialize in particular models or eras.

1. Gasoline Lanterns

Gasoline lanterns are some of the oldest models and are prized for their brightness and fuel efficiency. Notable models include:

- Model 200A: One of the most popular models, known for its durability and ease of use.
- Model 220: A classic design that has become synonymous with Coleman.

2. Kerosene Lanterns

Kerosene lanterns were popular before the widespread use of propane. They are often sought after for their vintage appeal.

- Model 242: A well-regarded model from the 1930s, known for its robustness.
- Model 200: A classic that represents the early days of Coleman.

3. Propane Lanterns

Propane lanterns are favored for their convenience and portability. They tend to be lighter and easier to operate than gasoline models.

- Model 285: A modern classic known for its bright output and fuel efficiency.
- Model 2000: Offers a contemporary design with reliable performance.

4. Electric Lanterns

With the rise of battery technology, electric lanterns have become popular for indoor and outdoor use.

- Model 5150: A rechargeable model with LED technology.
- Model 5350: Known for its extended battery life and bright output.

Factors to Consider When Collecting Coleman Lanterns

When starting a collection, several factors can influence the value and desirability of a Coleman lantern. Understanding these factors can help collectors make informed decisions.

1. Age and Rarity

Older models, especially those produced in limited quantities, are often more valuable. Key considerations include:

- Pre-1940 models: Generally more sought after due to their historical significance.
- Limited edition releases: Models released for special occasions or anniversaries.

2. Condition

The condition of a lantern has a significant impact on its value. Factors to consider include:

- Original parts: Models with all original components are more desirable.
- Rust and damage: Lanterns with minimal wear and tear are preferred by collectors.

3. Documentation and Packaging

Having the original box, manuals, and other documentation can greatly enhance a

lantern's value.

- Original box: In excellent condition can significantly increase the price.
- User manuals: Often sought after for their historical context.

Tips for Collecting Coleman Lanterns

Starting and maintaining a collection of Coleman lanterns can be a rewarding endeavor. Here are some tips to help collectors thrive in this hobby.

1. Research and Network

Joining collector clubs and online forums dedicated to Coleman lanterns can provide valuable insights and connections. Recommended resources include:

- Facebook groups: Many dedicated to Coleman collecting.
- Online forums: Such as the Coleman Collectors Club website.

2. Attend Shows and Auctions

Participating in antique shows, flea markets, and auctions can yield rare finds. Look for events that showcase vintage camping gear or collectibles.

3. Be Patient and Persistent

Building a collection takes time. Patience is crucial, as rare models may not be available immediately. Persistence in searching can lead to valuable discoveries.

4. Document Your Collection

Keep a detailed inventory of your collection, noting the model, condition, and any unique features. This documentation can help you track your collection's value and history.

Maintaining Your Coleman Lanterns

Proper maintenance is essential for preserving the functionality and appearance of Coleman lanterns.

1. Regular Cleaning

Keeping lanterns clean prevents deterioration and maintains their aesthetic appeal. Recommended cleaning tips include:

- Use mild soap and water: Avoid harsh chemicals that can damage finishes.
- Check for rust: Regularly inspect for rust and address it immediately.

2. Fuel and Parts Management

Using the correct fuel and regularly replacing worn parts can extend the life of your lantern.

- Use recommended fuels: Follow Coleman guidelines for fuel types.
- Stock up on parts: Have replacement mantles and other components on hand.

3. Safe Storage

Store lanterns in a cool, dry place to prevent damage. Consider:

- Using protective cases: To shield against dust and moisture.
- Avoiding direct sunlight: Which can fade colors and damage finishes.

Conclusion

The Coleman lantern collectors guide serves as a comprehensive resource for anyone interested in the fascinating world of Coleman lanterns. From understanding the history and types of lanterns to tips on collecting and maintaining them, this guide provides essential information for both new and experienced collectors. With patience, research, and a passion for outdoor history, collectors can enjoy the journey of building their Coleman lantern collection, celebrating the legacy of this iconic brand.

Frequently Asked Questions

What is a Coleman lantern collector's guide?

A Coleman lantern collector's guide is a resource that provides information on various models of Coleman lanterns, including their history, features, collectible value, and tips for identifying and restoring them.

What are the most sought-after models of Coleman lanterns among collectors?

Some of the most sought-after models include the Coleman 200A, 220F, and 242 series, particularly those produced in limited runs or with unique color schemes.

How can I determine the value of my Coleman lantern?

The value of a Coleman lantern can be determined by its model, condition, rarity, and market demand. Consulting price guides, auction results, and collector forums can provide valuable insights.

What are common features collectors look for in Coleman lanterns?

Collectors often look for features such as original parts, unique color variations, production date stamps, and the condition of the globe and fuel tank.

Where can I find Coleman lanterns for my collection?

Coleman lanterns can be found at antique shops, flea markets, estate sales, online marketplaces like eBay, and dedicated collector shows or conventions.

How should I care for and maintain my Coleman lanterns?

To care for your Coleman lanterns, keep them clean, store them in a cool, dry place, check seals and fittings for wear, and follow proper procedures for cleaning and refueling.

What resources are available for new collectors of Coleman lanterns?

New collectors can find resources such as books, online forums, collector websites, and social media groups dedicated to Coleman lanterns for tips, advice, and community support.

Are there any risks involved in collecting Coleman lanterns?

Yes, risks include purchasing counterfeit or poorly restored items, overpaying for common models, or dealing with hazardous materials if the lanterns are not properly maintained.

Find other PDF article:

<https://soc.up.edu.ph/33-gist/pdf?trackid=Hbn28-8619&title=international-earth-science-olympiad-2022.pdf>

Coleman Lantern Collectors Guide

Best Business Phone Systems of 2025 | U.S. News

Jul 22, 2025 · Our unbiased guide rates the best business phone systems of 2024. We also compares prices, plans, and features to help you make a smart buying decision.

The Best Business VoIP Services for 2025 - PCMag

Jun 26, 2025 · Why settle for an ancient, analog PBX? The best voice over IP (VoIP) services we've tested deliver enterprise-grade phone system features for a small-business-friendly price.

VoIP Phone System: How It Works, Top Features & Pricing - Nextiva

Save on your business phone service with VoIP. Over 100K brands choose Nextiva as their VoIP phone system provider. See top features and pricing.

Why VoIP Phone Service is the Best for Business - RingCentral

Sep 5, 2024 · Join 400K+ businesses that trust RingCentral for secure, high-quality VoIP service. See why we could be the best provider for you.

Google Voice: Business Phone Number & Systems | Google ...

Learn how Google Voice provides flexible online phone numbers and systems that help businesses of any size stay connected and save time.

5 formas de dividir - wikiHow

Cómo dividir. La división es una de las 4 operaciones principales de la aritmética junto con la suma, la resta y la multiplicación. Además de dividir números enteros puedes dividir ...

CÓMO HACER UNA DIVISIÓN Super fácil - Para principiantes

Hola, aqui les dejo este video en el que les explico como se hace una division de una manera muy facil, ideal para principiantes.

División (matemáticas): qué es, partes, cómo hacer y ejemplos

May 1, 2025 · Una división está formada por cuatro elementos: el dividendo, el divisor, el cociente y el resto. Dividendo: es la cantidad total que se quiere repartir en partes iguales. Divisor: es ...

Guía detallada para realizar una división paso a paso

Pero no solo se trata de partir cosas; se trata de entender cómo funciona y cómo se aplica a problemas más complejos. En esta guía, te llevaré a través de un viaje que te enseñará todo ...

Cómo hacer una división: Paso a paso - DonComo

En este artículo te enseñaremos cómo hacer una división de manera sencilla y paso a paso. Si te encuentras en una situación en la que necesitas dividir números pero no sabes cómo hacerlo, ...

Cómo hacer divisiones paso a paso con el procedimiento adecuado

Nov 22, 2024 · A continuación, te mostraré cómo hacer divisiones paso a paso, de manera estructurada y fácil de seguir. Este método te permitirá resolver divisiones sin dificultad, ...

Cómo hacer divisiones paso a paso con ejemplos y resultados

Para hacer divisiones paso a paso, es fundamental entender los conceptos básicos de la división y seguir un proceso metódico. A continuación, se presenta una guía detallada que incluye ...

Cómo hacer divisiones: Guía paso a paso para principiantes

Guía sencilla: paso a paso para hacer divisiones. Aprende de forma fácil y rápida. ¡Domina esta habilidad matemática imprescindible!

¿Qué es una División? | Explicación Fácil para Niños con Ejemplos

Descubre qué es una división con ejemplos sencillos y visuales. Aprende a repartir de forma justa con explicaciones pensadas para niños de primaria.

Calculadora de divisiones paso a paso online

"Calculadora de Divisiones: Herramienta interactiva para resolver divisiones paso a paso. Calcula, aprende cómo calcular divisiones."

Unlock the secrets of vintage lighting with our Coleman Lantern Collectors Guide. Discover how to identify

[Back to Home](#)