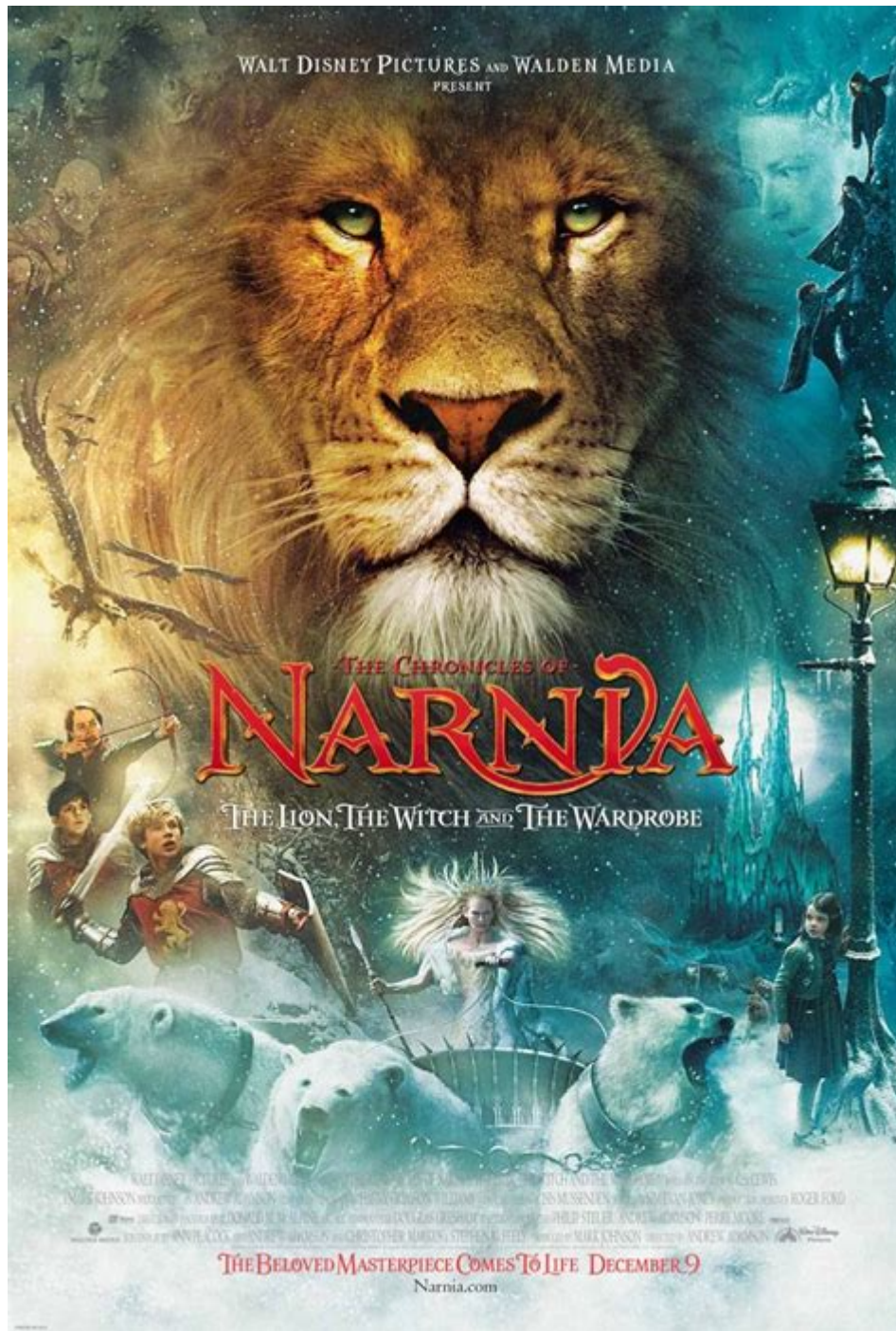


Chronicles Of Narnia The Lion Witch And Wardrobe



CHRONICLES OF NARNIA: THE LION, THE WITCH AND THE WARDROBE IS A TIMELESS CLASSIC THAT HAS CAPTIVATED READERS OF ALL AGES SINCE ITS PUBLICATION IN 1950. WRITTEN BY C.S. LEWIS, THIS FANTASY NOVEL IS THE FIRST PUBLISHED BOOK IN THE "CHRONICLES OF NARNIA" SERIES, WHICH CONSISTS OF SEVEN BOOKS IN TOTAL. THE STORY IS SET IN THE MAGICAL LAND OF NARNIA, A PLACE FILLED WITH MYTHICAL CREATURES, EPIC BATTLES, AND PROFOUND THEMES THAT RESONATE WITH BOTH CHILDREN AND ADULTS. IN THIS ARTICLE, WE WILL EXPLORE THE PLOT, CHARACTERS, THEMES, AND THE LASTING IMPACT OF THIS BELOVED WORK.

PLOT OVERVIEW

THE NARRATIVE BEGINS DURING WORLD WAR II WHEN FOUR SIBLINGS—PETER, SUSAN, EDMUND, AND LUCY PEVENSIE—ARE EVACUATED FROM LONDON TO THE COUNTRYSIDE TO ESCAPE THE BOMBINGS. THEY ARE SENT TO STAY WITH AN OLD PROFESSOR IN A LARGE, MYSTERIOUS HOUSE. ONE DAY, WHILE EXPLORING THE HOUSE, LUCY DISCOVERS A WARDROBE THAT LEADS HER INTO NARNIA, A FROZEN LAND RULED BY THE WHITE WITCH, WHO HAS CAST A SPELL MAKING IT ALWAYS WINTER AND NEVER CHRISTMAS.

AS LUCY TELLS HER SIBLINGS ABOUT NARNIA, THEY ARE SKEPTICAL AND DISMISS HER CLAIMS. HOWEVER, WHEN EDMUND, THE SECOND YOUNGEST, ENTERS THE WARDROBE AND ENCOUNTERS THE WHITE WITCH, HE IS ENCHANTED BY HER PROMISES OF POWER AND TREATS. THIS ENCOUNTER LEADS TO A SERIES OF EVENTS THAT ULTIMATELY DRAW ALL FOUR SIBLINGS INTO NARNIA.

THE PEVENSIE SIBLINGS LEARN ABOUT ASLAN, THE GREAT LION AND TRUE KING OF NARNIA, WHO HAS RETURNED TO CHALLENGE THE WHITE WITCH'S REIGN. ASLAN REPRESENTS GOOD, WHILE THE WHITE WITCH EMBODIES EVIL. THE SIBLINGS BECOME PART OF A LARGER BATTLE BETWEEN GOOD AND EVIL, CULMINATING IN A DRAMATIC CONFRONTATION THAT TESTS THEIR COURAGE, LOYALTY, AND SENSE OF JUSTICE.

KEY CHARACTERS

THE CHARACTERS IN CHRONICLES OF NARNIA: THE LION, THE WITCH AND THE WARDROBE ARE RICHLY DEVELOPED AND SERVE AS ARCHETYPES FOR VARIOUS HUMAN TRAITS AND MORAL VALUES. HERE ARE SOME OF THE MAIN CHARACTERS:

1. LUCY PEVENSIE: THE YOUNGEST SIBLING, LUCY IS BRAVE, KIND-HEARTED, AND THE FIRST TO DISCOVER NARNIA. HER FAITH IN ASLAN AND THE GOODNESS OF NARNIA SERVES AS A BEACON FOR HER SIBLINGS.
2. EDMUND PEVENSIE: THE SECOND YOUNGEST, EDMUND IS INITIALLY PORTRAYED AS SELFISH AND DECEITFUL. HIS ENCOUNTER WITH THE WHITE WITCH LEADS HIM TO BETRAY HIS SIBLINGS, BUT HE ULTIMATELY SEEKS REDEMPTION.
3. PETER PEVENSIE: THE ELDEST, PETER IS A NATURAL LEADER AND PROTECTOR. HE EMBODIES BRAVERY AND RESPONSIBILITY, STEPPING UP TO LEAD HIS SIBLINGS IN THE FIGHT AGAINST THE WHITE WITCH.
4. SUSAN PEVENSIE: THE SECOND ELDEST, SUSAN IS PRACTICAL AND CAUTIOUS. SHE REPRESENTS COMMON SENSE AND SKEPTICISM, OFTEN QUESTIONING THE FANTASTICAL ELEMENTS OF NARNIA.
5. ASLAN: THE MAJESTIC LION SYMBOLIZES GOODNESS, SACRIFICE, AND RESURRECTION. HE IS A CHRIST-LIKE FIGURE WHOSE PRESENCE BRINGS HOPE AND STRENGTH TO THE CHARACTERS IN NARNIA.
6. THE WHITE WITCH: THE MAIN ANTAGONIST, SHE REPRESENTS TYRANNY, BETRAYAL, AND EVIL. HER REIGN OVER NARNIA IS MARKED BY MANIPULATION AND FEAR.
7. MR. TUMNUS: A FAUN WHO BEFRIENDS LUCY, HE IS A GENTLE SOUL CAUGHT BETWEEN LOYALTY TO THE WHITE WITCH AND HIS DESIRE TO DO GOOD. HIS CHARACTER REFLECTS THEMES OF MORALITY AND CHOICE.

THEMES

CHRONICLES OF NARNIA: THE LION, THE WITCH AND THE WARDROBE PRESENTS SEVERAL PROFOUND THEMES THAT CONTRIBUTE TO ITS ENDURING APPEAL:

GOOD vs. EVIL

AT ITS CORE, THE STRUGGLE BETWEEN GOOD AND EVIL IS A CENTRAL THEME. THE WHITE WITCH REPRESENTS THE COLD, OPPRESSIVE FORCE OF EVIL, WHILE ASLAN EMBODIES WARMTH, LOVE, AND JUSTICE. THE SIBLINGS' JOURNEY ILLUSTRATES THE

IMPORTANCE OF STANDING UP FOR WHAT IS RIGHT, EVEN IN THE FACE OF OVERWHELMING ODDS.

REDEMPTION AND FORGIVENESS

EDMUND'S CHARACTER ARC HIGHLIGHTS THE THEME OF REDEMPTION. HIS INITIAL BETRAYAL OF HIS SIBLINGS AND HIS SUBSEQUENT JOURNEY TOWARD FORGIVENESS AND ATONEMENT MIRROR REAL-LIFE STRUGGLES WITH GUILT AND THE QUEST FOR FORGIVENESS. ASLAN'S WILLINGNESS TO SACRIFICE HIMSELF FOR EDMUND'S REDEMPTION EMPHASIZES THE POWER OF LOVE AND COMPASSION.

FAITH AND BELIEF

THE CONTRASTING ATTITUDES OF THE PEVENSIE SIBLINGS TOWARDS NARNIA REFLECT VARYING DEGREES OF FAITH. LUCY'S UNWAVERING BELIEF IN ASLAN AND NARNIA'S MAGIC CONTRASTS WITH SUSAN AND PETER'S INITIAL SKEPTICISM. THIS THEME UNDERSCORES THE IMPORTANCE OF FAITH IN SOMETHING GREATER THAN ONESELF, ESPECIALLY IN CHALLENGING TIMES.

FAMILY AND LOYALTY

THE BOND BETWEEN THE PEVENSIE SIBLINGS IS CENTRAL TO THE NARRATIVE. THEIR LOYALTY TO ONE ANOTHER, DESPITE THEIR DIFFERENCES, SHOWCASES THE IMPORTANCE OF FAMILY TIES AND THE STRENGTH OF UNITY IN OVERCOMING ADVERSITY.

SYMBOLISM

THE NOVEL IS RICH WITH SYMBOLISM THAT ENHANCES ITS THEMES AND MESSAGES:

- ASLAN AS CHRIST: ASLAN'S SACRIFICIAL DEATH AND RESURRECTION SERVE AS AN ALLEGORY FOR CHRIST'S SACRIFICE IN CHRISTIAN THEOLOGY, EMPHASIZING THEMES OF REDEMPTION AND SALVATION.
- THE WARDROBE: THE WARDROBE SYMBOLIZES THE THRESHOLD BETWEEN THE ORDINARY WORLD AND THE EXTRAORDINARY WORLD OF NARNIA, REPRESENTING THE JOURNEY FROM CHILDHOOD INNOCENCE TO A DEEPER UNDERSTANDING OF GOOD AND EVIL.
- WINTER: THE ETERNAL WINTER REPRESENTS DESPAIR AND HOPELESSNESS UNDER THE WHITE WITCH'S RULE. THE ARRIVAL OF SPRING, HERALDED BY ASLAN, SYMBOLIZES RENEWAL, HOPE, AND THE RETURN OF JOY.

IMPACT AND LEGACY

SINCE ITS PUBLICATION, CHRONICLES OF NARNIA: THE LION, THE WITCH AND THE WARDROBE HAS LEFT A PROFOUND IMPACT ON LITERATURE AND POPULAR CULTURE. HERE ARE SOME OF THE KEY ASPECTS OF ITS LEGACY:

1. LITERARY INFLUENCE: C.S. LEWIS'S WORK HAS INSPIRED COUNTLESS AUTHORS AND WRITERS IN THE FANTASY GENRE. THE BLEND OF ADVENTURE, MORAL LESSONS, AND ALLEGORY HAS BECOME A HALLMARK FOR MANY SUBSEQUENT FANTASY STORIES.
2. ADAPTATIONS: THE BOOK HAS BEEN ADAPTED INTO VARIOUS MEDIA, INCLUDING STAGE PLAYS, ANIMATED FILMS, AND LIVE-ACTION MOVIES. THE MOST NOTABLE ADAPTATION WAS THE 2005 FILM DIRECTED BY ANDREW ADAMSON, WHICH BROUGHT THE STORY TO A NEW GENERATION AND RECEIVED CRITICAL AND COMMERCIAL SUCCESS.
3. CULTURAL REFERENCES: THE CHARACTERS AND THEMES FROM NARNIA HAVE PERMEATED POPULAR CULTURE, APPEARING IN VARIOUS FORMS IN LITERATURE, FILM, AND EVEN ACADEMIC DISCUSSIONS ON MORALITY AND ETHICS.
4. FAITH AND PHILOSOPHY: THE NOVEL HAS SPARKED DISCUSSIONS REGARDING FAITH, MORALITY, AND ETHICAL DILEMMAS,

MAKING IT A POPULAR CHOICE FOR EDUCATIONAL SETTINGS, PARTICULARLY IN RELIGIOUS STUDIES.

CONCLUSION

CHRONICLES OF NARNIA: THE LION, THE WITCH AND THE WARDROBE IS MORE THAN JUST A CHILDREN'S BOOK; IT IS A PROFOUND EXPLORATION OF HUMAN NATURE, MORALITY, AND THE BATTLE BETWEEN GOOD AND EVIL. THROUGH ITS RICH CHARACTERS, ENGAGING PLOT, AND DEEP THEMES, C.S. LEWIS HAS CRAFTED A NARRATIVE THAT RESONATES WITH READERS OF ALL AGES. THE STORY ENCOURAGES READERS TO EMBRACE FAITH, SEEK REDEMPTION, AND VALUE THE IMPORTANCE OF FAMILY AND LOYALTY. AS IT CONTINUES TO INSPIRE AND ENTERTAIN, NARNIA REMAINS A CHERISHED PART OF LITERARY HISTORY, INVITING NEW GENERATIONS TO DISCOVER ITS MAGIC AND WISDOM.

FREQUENTLY ASKED QUESTIONS

WHAT IS THE MAIN CONFLICT IN 'THE LION, THE WITCH AND THE WARDROBE'?

THE MAIN CONFLICT REVOLVES AROUND THE BATTLE BETWEEN GOOD AND EVIL, AS THE PEVENSIE SIBLINGS ALLY WITH ASLAN TO DEFEAT THE WHITE WITCH, WHO HAS PLUNGED NARNIA INTO ETERNAL WINTER.

WHO ARE THE MAIN CHARACTERS IN 'THE LION, THE WITCH AND THE WARDROBE'?

THE MAIN CHARACTERS INCLUDE THE PEVENSIE SIBLINGS: PETER, SUSAN, EDMUND, AND LUCY, ALONG WITH ASLAN, THE GREAT LION, AND THE WHITE WITCH, WHO IS THE ANTAGONIST.

WHAT ROLE DOES ASLAN PLAY IN THE STORY?

ASLAN SERVES AS A SYMBOL OF GOODNESS AND SACRIFICE; HE IS THE TRUE KING OF NARNIA WHO HELPS THE PEVENSIE SIBLINGS AND ULTIMATELY SACRIFICES HIMSELF TO SAVE EDMUND AND DEFEAT THE WHITE WITCH.

HOW DOES EDMUND'S CHARACTER EVOLVE THROUGHOUT THE STORY?

EDMUND BEGINS AS A TRAITOR WHO IS TEMPTED BY THE WHITE WITCH'S PROMISES BUT EVENTUALLY SEEKS REDEMPTION BY JOINING HIS SIBLINGS AND FIGHTING AGAINST HER, DEMONSTRATING GROWTH AND THE THEME OF FORGIVENESS.

WHAT DOES THE WARDROBE SYMBOLIZE IN THE STORY?

THE WARDROBE SYMBOLIZES THE GATEWAY BETWEEN THE ORDINARY WORLD AND THE MAGICAL REALM OF NARNIA, REPRESENTING THE IDEA OF ADVENTURE AND DISCOVERY BEYOND THE MUNDANE.

WHAT THEMES ARE EXPLORED IN 'THE LION, THE WITCH AND THE WARDROBE'?

THEMES INCLUDE SACRIFICE, REDEMPTION, BETRAYAL, COURAGE, AND THE STRUGGLE BETWEEN GOOD AND EVIL, AS WELL AS THE IMPORTANCE OF FAMILY AND FRIENDSHIP.

HOW DOES THE STORY REFLECT CHRISTIAN ALLEGORY?

THE STORY REFLECTS CHRISTIAN ALLEGORY THROUGH ASLAN'S SACRIFICE, WHICH PARALLELS THE CRUCIFIXION OF JESUS, AND THE THEMES OF RESURRECTION AND REDEMPTION THAT FOLLOW.

WHAT IS THE SIGNIFICANCE OF THE PROPHECY MENTIONED IN THE BOOK?

THE PROPHECY FORETELLS THAT WHEN TWO SONS OF ADAM AND TWO DAUGHTERS OF EVE SIT ON THE THRONES AT CAIR PARAVEL, THE WHITE WITCH'S REIGN WILL END, FORESHADOWING THE PEVENSIE SIBLINGS' PIVOTAL ROLE IN NARNIA'S DESTINY.

<https://soc.up.edu.ph/23-write/files?ID=ojU92-9345&title=frederick-jackson-turner-significance-of-the-frontier.pdf>

[illegible]

Rock Chronicles 1990 - 2000

Switchのインストール - 序

yuzuはcemuのフォークプロジェクトSwitchのNyushuのyuzuのインストールのswitchのインストールのSwitchのyuzuのNyushuのyuzuの...

Paul Amadeus Dienach ...
Feb 20, 2025 · Paul Amadeus Dienach *Chronicles from the Future* ...

[SELeft Studio](#)
[Lycian Studio](#)
[Olaguna Chronicles](#)
[83](#)
[Steam](#)
[49](#)
[LIKE](#)
[SRPG](#)
[...](#)

[illegible]

Chronicles of the Kingdom of the Clouds ...

Chronicles: ...
+ 4TC 2TC 3TC 4TC 1TC

Rock Chronicles -
900080“”
—“”“” ...

Galgame- -
Aug 8, 2021 · Furion Chronicles
... , , , ...

Switch -
yuzu cemu Switch Nyushu yuzu switch Switch
yuzu Nyushu yuzu 8sgen4 yuzu
8gen2 ...

-
Jun 15, 2015 · “the graver robber's chronicles”
... 4

· Paul Amadeus Dienach ...
Feb 20, 2025 · Paul Amadeus Dienach *Chronicles from the Future* ...

-
Jun 28, 2024 · The Chronicles of Libidoists / / 2024-06-28 / 145
...

Wii -
Xenoblade Xenoblade Chronicles...

- -
SELeft Studio Lycian Studio Olaguna Chronicles 83 Steam
49 LIKE SRPG ...

Dive into the magical world of 'Chronicles of Narnia: The Lion

[Back to Home](#)