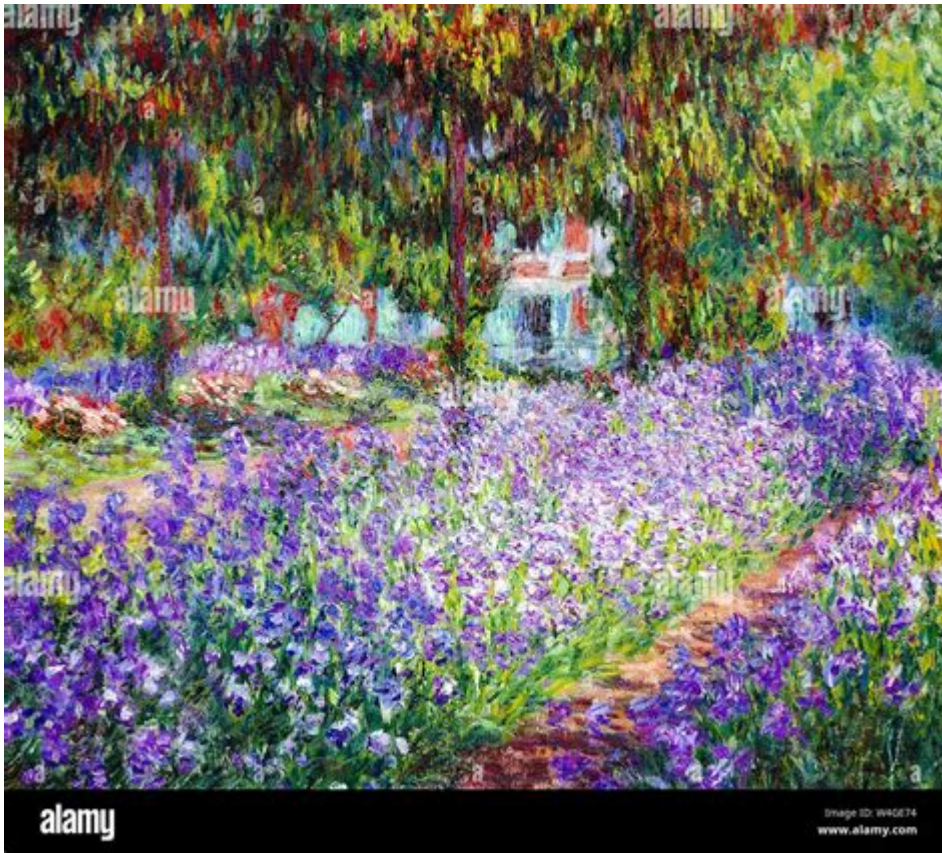


Claude Monet Garden At Giverny



Claude Monet's Garden at Giverny is a living canvas that continues to inspire artists and nature lovers alike. Nestled in the picturesque Normandy region of France, the garden was meticulously designed by the famous impressionist painter Claude Monet, who lived here from 1883 until his death in 1926. The garden not only served as a source of inspiration for many of Monet's most famous works, but it also reflects his deep appreciation for nature and beauty. In this article, we will explore the history, design, and significance of Claude Monet's garden, and its enduring legacy in the realm of art and horticulture.

Historical Background

Monet moved to Giverny in 1883 after renting a house in the area. The house was situated in a rural setting that provided the tranquility he sought after years of bustling city life in Paris. Over time, Monet purchased the property and began to transform it into the stunning garden we know today.

Creation of the Garden

The most remarkable aspect of Claude Monet's garden is its dual design,

consisting of two distinct sections:

1. The Flower Garden (Clos Normand):

- This part of the garden is a vibrant explosion of colors, featuring a diverse range of flowers that bloom in succession throughout the seasons.
- Monet designed this garden to be a place of beauty and inspiration. He mixed various species of flowers and plants, often planting them in irregular patterns that showcased his belief in the beauty of nature's chaos.
- Key plants include:
 - Irises
 - Peonies
 - Roses
 - Delphiniums
 - Poppies

2. The Water Garden:

- Located across the road from the house, the water garden features a tranquil pond that Monet famously depicted in many of his paintings.
- It is adorned with Japanese-style bridges, weeping willows, and water lilies, creating a serene atmosphere that contrasts with the vibrancy of the flower garden.
- Monet was particularly fond of the water lilies, and he dedicated a series of over 250 paintings to them, exploring the nuances of light and reflection.

Artistic Inspiration

Monet's garden was more than just a personal retreat; it was an essential source of inspiration for his art. The garden's design allowed him to experiment with color, light, and perspective, key elements of the Impressionist movement.

Iconic Works

Several of Monet's masterpieces were inspired by his garden, including:

- "Water Lilies" Series: This collection of approximately 250 paintings captures the changing light and reflections on his beloved pond.
- "The Japanese Bridge": In this series, Monet focused on the wooden bridge that spans the water garden, highlighting its beauty in different seasons and times of day.
- "Irises": Painted in 1914-1917, this work showcases the vibrant colors of the irises in his flower garden, reflecting his fascination with the interplay of light and color.

These works not only demonstrate Monet's unique style but also serve as a testament to the garden's influence on his creative process.

Visiting Monet's Garden Today

Today, Claude Monet's Garden at Giverny is a popular tourist destination, attracting thousands of visitors each year. The site has been preserved and restored to reflect its historical significance and to honor Monet's legacy.

What to Expect

Visitors to the garden can expect a breathtaking experience that includes:

- Guided Tours: Knowledgeable guides offer insights into Monet's life, his artistic journey, and the garden's design.
- Seasonal Blooms: The garden is designed to bloom in waves throughout the year, allowing visitors to experience different floral displays depending on the season.
- Art Exhibitions: The nearby museum occasionally hosts exhibitions that delve into Monet's work, providing context and deeper understanding of his artistic contributions.

Practical Information

For those planning a visit, here are some practical details:

- Location: Giverny is located approximately 80 kilometers (50 miles) west of Paris.
- Opening Hours: The garden is typically open from late March to early November. It's advisable to check the official website for specific dates and times.
- Admission Fees: There is an entrance fee for the garden and the museum, with discounts available for students and groups.
- Accessibility: The site is generally accessible, with pathways designed to accommodate visitors with mobility challenges.

Significance of Monet's Garden

The importance of Claude Monet's garden extends beyond its aesthetic appeal. It represents a pivotal moment in art history, encapsulating the ethos of the Impressionist movement. Monet's ability to capture the transient beauty of nature has influenced countless artists and gardeners worldwide.

Cultural Impact

- In Art: Monet's innovative techniques and focus on natural beauty inspired subsequent generations of artists, including the Post-Impressionists, American Impressionists, and even Modern artists.
- In Gardening: The garden design principles Monet employed have influenced landscape architecture, encouraging a more naturalistic approach to garden design.

Legacy and Preservation

The garden continues to be meticulously maintained by the Claude Monet Foundation. Restoration efforts ensure that the landscape remains true to Monet's vision, allowing future generations to appreciate the beauty he cultivated. The garden's preservation also serves as an educational platform, teaching visitors about the importance of biodiversity and sustainable gardening practices.

Conclusion

Claude Monet's Garden at Giverny is more than just a beautiful landscape; it is a testament to the power of nature as a source of inspiration and creativity. The garden reflects Monet's profound connection to the natural world, allowing him to explore light, color, and form in ways that revolutionized art. For anyone interested in the intersection of art and nature, a visit to Monet's garden is a journey into the heart of Impressionism—a vibrant reminder of the beauty that can be found in the simplest of things. Whether you are an art enthusiast, a nature lover, or someone seeking tranquility, Monet's garden at Giverny is a place that promises to inspire and uplift.

Frequently Asked Questions

What inspired Claude Monet to create his famous garden at Giverny?

Claude Monet was inspired by his love for nature and the desire to create a living canvas that reflected the beauty of the natural world. He designed the garden to serve as a source of inspiration for his paintings, incorporating a variety of flowers, plants, and water features.

What are the key features of Monet's garden at Giverny?

Key features of Monet's garden include the flower garden known as 'Clos Normand', which is filled with vibrant flowers, and the Japanese water

Claude Pro
Claude Pro
Claude Pro

Claude Opus/Sonnet 4 ...

GitHub - eyaltoledano/claude-task-master: An AI-powered task ...
Task Master By @eyaltoledano, @RalphEcom & @jasonzhou1993 A task management system for AI-driven development with Claude, designed to work seamlessly with Cursor AI.

EndlessClaude - GitHub
A modern, responsive web interface for unlimited free access to Claude AI, with no signups, no usage limits, and completely free forever. This project provides a clean, Discord-inspired chat ...

-
 2011 1 ...

Claude Claude 4 Sonnet ~ ...
Jul 15, 2025 · Claude 4 Sonnet Claude Anthropic Claude AI ...

GitHub - SuperClaude-Org/SuperClaude_Framework: A ...
About A configuration framework that enhances Claude Code with specialized commands, cognitive personas, and development methodologies.

Explore the enchanting Claude Monet Garden at Giverny

[Back to Home](#)