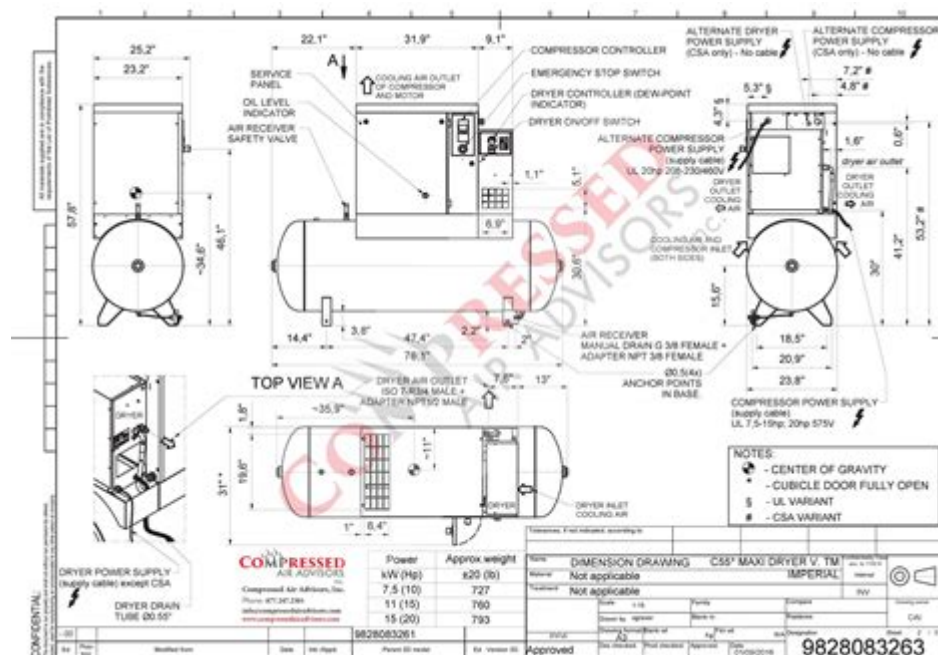


Chicago Pneumatic Air Compressor User Manual



Chicago pneumatic air compressor user manual is an essential document that provides users with the necessary information to operate and maintain their air compressors efficiently. Understanding how to navigate through the user manual can significantly enhance the performance of your Chicago pneumatic air compressor and prolong its lifespan. This article will explore the various sections typically found in these manuals, common troubleshooting tips, and maintenance guidelines to ensure your air compressor runs smoothly.

Understanding the Chicago Pneumatic Air Compressor User Manual

The user manual for a Chicago pneumatic air compressor is divided into several key sections. Each section serves a specific purpose to help you get the most out of your air compressor. Here's an overview of what you can expect to find in the manual.

1. Product Overview

This section usually includes:

- Model Specifications: Details about the specific model of the air compressor, including horsepower, tank size, and maximum pressure.

- **Components:** A breakdown of the parts and features of the compressor, including the motor, tank, pressure switch, and more.
- **Safety Information:** Crucial safety guidelines and warnings to prevent accidents while using the compressor.

2. Installation Instructions

Proper installation is critical for optimal performance. This section covers:

- **Location Recommendations:** Guidance on selecting a suitable location for the compressor, considering factors such as ventilation and accessibility.
- **Electrical Requirements:** Details about the electrical specifications needed to power your compressor safely.
- **Assembly Steps:** Step-by-step instructions for assembling the compressor, including any necessary tools.

3. Operating Procedures

Once your compressor is installed, this section guides you through the operational processes:

- **Starting the Compressor:** Instructions on how to properly start the unit, ensuring you follow safety protocols.
- **Adjusting Pressure Settings:** How to set and adjust the pressure according to your specific needs.
- **Using Accessories:** Information on how to use various accessories and attachments that may come with your compressor.

Maintenance Guidelines

Regular maintenance is vital to keep your Chicago pneumatic air compressor in top shape. The user manual typically outlines a maintenance schedule that includes:

1. Daily Maintenance Tasks

- **Check Oil Levels:** Ensure that the oil levels are adequate to prevent engine damage.
- **Inspect Air Filter:** A clean air filter is essential for optimal performance; check for clogs or dirt.
- **Examine Hoses and Connections:** Look for leaks or damage that could affect the efficiency of the air compressor.

2. Weekly Maintenance Tasks

- Drain the Tank: Moisture can accumulate in the tank, leading to corrosion. Regularly drain water to maintain tank integrity.
- Tighten Bolts and Fasteners: Vibration can cause parts to loosen over time; check and tighten any loose components.

3. Monthly Maintenance Tasks

- Change Oil: Depending on the model, changing the oil monthly may be necessary to keep the air compressor running smoothly.
- Check Belts and Hoses: Inspect for wear and replace any frayed or cracked belts and hoses.

Troubleshooting Common Issues

Even with proper maintenance, you may encounter issues with your air compressor. The user manual often includes a troubleshooting guide. Here are some common problems and their solutions:

1. Compressor Won't Start

- Check Power Supply: Ensure the compressor is plugged in and that the circuit breaker hasn't tripped.
- Inspect Pressure Switch: If the pressure switch is faulty, it may prevent the compressor from starting.

2. Low Pressure Output

- Air Leaks: Inspect hoses and connections for leaks that may reduce pressure.
- Clogged Filter: A dirty air filter can restrict airflow, leading to lower pressure.

3. Excessive Noise or Vibration

- Loose Components: Check for loose bolts or parts that may cause excessive noise.
- Worn Bearings: If the compressor is older, worn bearings may need replacement.

Safety Precautions

Safety should always be a priority when using any power equipment, including air compressors. The user manual typically emphasizes the following safety precautions:

- Personal Protective Equipment (PPE): Always wear appropriate PPE, such as safety goggles and ear protection.
- Ventilation: Ensure that the area is well-ventilated to avoid the accumulation of harmful fumes.
- Emergency Shutoff: Familiarize yourself with the emergency shutoff switch location in case of a malfunction.

Conclusion

The **Chicago pneumatic air compressor user manual** is an invaluable resource that provides essential information for operating and maintaining your air compressor. By understanding the content of the manual, adhering to maintenance schedules, and following safety precautions, you can enhance the longevity and performance of your air compressor. Whether you are a seasoned professional or a DIY enthusiast, taking the time to consult the user manual will ensure that your equipment functions efficiently and safely.

Frequently Asked Questions

Where can I find the user manual for my Chicago Pneumatic air compressor?

You can find the user manual for your Chicago Pneumatic air compressor on the official Chicago Pneumatic website under the 'Support' section, or you can contact their customer service for assistance.

What safety precautions should I take when using my Chicago Pneumatic air compressor?

Always wear appropriate personal protective equipment (PPE), check for leaks before use, ensure proper ventilation, and never operate the compressor in wet conditions to ensure safe use.

How do I perform routine maintenance on my Chicago Pneumatic air compressor?

Routine maintenance includes checking and changing the oil, cleaning or replacing the air filter, draining the water from the tank, and inspecting hoses and connections for wear or damage.

What should I do if my Chicago Pneumatic air compressor won't start?

Check the power supply, ensure that the unit is properly plugged in, and verify that the circuit breaker hasn't tripped. If the problem persists, refer to the troubleshooting section of the user manual.

How often should I change the oil in my Chicago Pneumatic air compressor?

Oil changes should typically be performed every 300 hours of operation or every 6 months, whichever comes first. Refer to your user manual for specific recommendations based on your model.

Can I use my Chicago Pneumatic air compressor for painting?

Yes, Chicago Pneumatic air compressors are suitable for painting, but make sure to use an appropriate spray gun and to adjust the pressure settings as specified in the user manual for optimal results.

What types of air fittings are compatible with Chicago Pneumatic air compressors?

Chicago Pneumatic air compressors typically use standard quick-connect fittings. Always refer to the user manual for specific details on compatible fittings and accessories for your model.

Find other PDF article:

<https://soc.up.edu.ph/50-draft/files?ID=VQZ62-5362&title=regular-past-tense-verbs-worksheets.pdf>

[Chicago Pneumatic Air Compressor User Manual](#)

Chicago Pneumatic Air Compressor User Manual? - PDF

CMS CMS Chicago Pneumatic Air Compressor User Manual The Chicago Manual of Style, 1906 Chicago Manual Style, Chicago humanities Chicago Pneumatic Air Compressor User Manual ...

Endnote Chicago Pneumatic Air Compressor User Manual - PDF

Jan 24, 2018 · Chicago Pneumatic Air Compressor User Manual Endnote Chicago Pneumatic Air Compressor User Manual

Explorer.exe Chicago Pneumatic Air Compressor User Manual Windows 95 ...

Explorer.exe Windows 95 Chicago Pneumatic Air Compressor User Manual Windows Chicago 4.0.58s explorer cabinet Chicago Pneumatic Air Compressor User Manual 1993-08-09 Chicago Pneumatic Air Compressor User Manual ...

Chicago -

Chicago APA MLA Chicago He knew ...

Chicago.ru | Forum | Работа в США Чикаго

Чикаго, работа, жильё, услуги, аренда, знакомства, Russian Chicago, USA, russians in chicago, Русский Чикаго, США, события, рестораны, форум, объявления, афиша, девушки, русский, ...

Russian Chicago | Русский Чикаго

Чикаго, работа, жильё, услуги, аренда, знакомства, Russian Chicago, USA, russians in chicago, Русский Чикаго, США, события, рестораны, форум, объявления, афиша, девушки, русский, ...

APA Style MLA Style Harvard Style Chicago Style ...

Nov 14, 2012 · APA Style MLA Style Harvard Style Chicago Style 154

zotero -

CSL Search by Name (citationstyles.org) Install zotero

www.chicagochinaren.com

word zotero ...

Microsoft Word Zotero APA Chicago Author-Date [1][2] ...

? -

CMS CMS The Chicago Manual of Style, 1906 Manual Style, humanities ...

Endnote output style -

Jan 24, 2018 · Endnote

Explorer.exe Windows 95

Explorer.exe Windows 95 Chicago Windows Chicago 4.0.58s explorer cabinet 3 1993-08-09 ...

-

Chicago APA MLA Chicago He knew ...

Chicago.ru | Forum | Работа в США Чикаго

Чикаго, работа, жильё, услуги, аренда, знакомства, Russian Chicago, USA, russians in chicago, Русский Чикаго, США, события, рестораны, форум, объявления, афиша, ...

Russian Chicago | Русский Чикаго

Чикаго, работа, жильё, услуги, аренда, знакомства, Russian Chicago, USA, russians in chicago, Русский Чикаго, США, события, рестораны, форум, объявления, афиша, ...

APA Style MLA Style Harvard Style Chicago Style ...

Nov 14, 2012 · APA Style MLA Style Harvard Style Chicago Style 154

zotero -

CSL Search by Name (citationstyles.org) Install zotero

www.chicagochinaren.com

word zotero ...

Microsoft Word Zotero - APA Chicago Author-Date

Find the Chicago pneumatic air compressor user manual you need with our comprehensive guide.
Learn more about setup

[Back to Home](#)