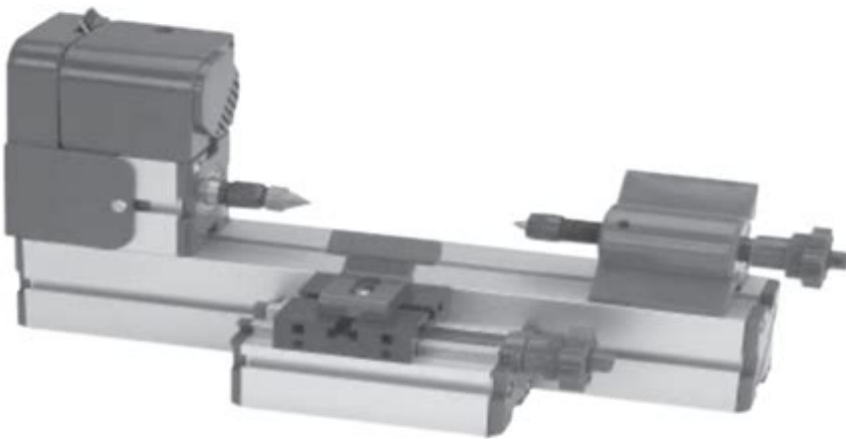


Central Machinery Mini Lathe 03173

Operating Manual



Central Machinery Mini Lathe 03173 Operating Manual

The Central Machinery Mini Lathe 03173 is a popular choice among hobbyists and small-scale machinists due to its compact size and versatility. Whether you are a beginner or an experienced user, understanding how to operate this machine safely and effectively is crucial for achieving the best results. This article serves as a comprehensive guide to the operating manual of the Central Machinery Mini Lathe 03173, covering its features, setup, operation, maintenance, and safety precautions.

Overview of the Central Machinery Mini Lathe 03173

The Central Machinery Mini Lathe 03173 is designed for precision machining of small workpieces. With a swing over bed of 7 inches and a distance between centers of 12 inches, it provides ample capacity for a variety of tasks, including turning, facing, and drilling. The machine is equipped with a variable speed motor that allows users to adjust the spindle speed for different materials and applications.

Key Features

- Variable Speed Control: The lathe features a speed range from 0 to 2500 RPM, allowing for flexibility in machining operations.
- Precision Machining: With a 0.001 inch accuracy, this lathe can produce finely detailed components.
- Integrated Lighting: A built-in LED lamp illuminates the work area, enhancing visibility during operations.
- Compact Design: Its small footprint makes it suitable for limited workshop spaces.
- Safety Features: Emergency stop buttons and guards help ensure user safety.

Setting Up the Lathe

Setting up the Central Machinery Mini Lathe 03173 correctly is essential for safe and effective operation. Follow these steps to prepare your lathe for use:

Unboxing and Inspection

1. Carefully unbox the lathe and inspect all components for any visible damage or missing parts.
2. Ensure that all accessories, such as the tailstock, tool rest, and chuck, are included.

Choosing a Location

- Select a stable and flat surface to place the lathe.
- Ensure that there is adequate lighting and ventilation in the workspace.
- Keep the area free of clutter to prevent accidents.

Assembly Instructions

1. Attach the Legs: If your lathe comes with legs, attach them securely to the base.
2. Install the Tailstock: Slide the tailstock into position on the bed and tighten the locking handle.
3. Mount the Chuck: Attach the chuck to the spindle using the appropriate wrench, making sure it is secured tightly.
4. Set Up the Tool Rest: Insert the tool rest into the appropriate mounting hole and adjust its height.

Electrical Connections

- Ensure the lathe is unplugged before making any electrical connections.
- Connect the power cord to a suitable power outlet with the correct voltage.
- Check the machine's electrical specifications in the manual to avoid damage.

Operating the Central Machinery Mini Lathe 03173

Once your lathe is set up, it's time to understand how to operate it effectively. Below are the key operational steps and techniques.

Basic Operations

1. Turning a Workpiece:

- Select the appropriate speed for the material being used.
- Secure the workpiece in the chuck and ensure it is centered.
- Adjust the tool rest to the desired height and angle.
- Gradually engage the tool with the workpiece, moving it along the length to achieve the desired shape.

2. Facing:

- Align the cutting tool perpendicular to the workpiece.
- Engage the tool at the edge and move towards the center.
- Repeat until the desired flat surface is achieved.

3. Drilling:

- Secure the drill bit in the tailstock.
- Align the tailstock with the workpiece.
- Lower the tailstock handle to engage the drill bit.

Tool Changes and Adjustments

- Always ensure the lathe is powered off before changing tools.
- Use the appropriate tools for tightening and loosening the chuck and tool rest.
- Check for tool wear and replace as necessary to maintain precision.

Maintenance of the Mini Lathe

Regular maintenance is key to ensuring that the Central Machinery Mini Lathe 03173 operates smoothly and lasts for years. Here are some maintenance tips:

Daily Checklist

- Clean the lathe bed and components to remove debris and chips.
- Lubricate moving parts according to the manufacturer's instructions.
- Inspect belts and pulleys for wear and replace if necessary.

Monthly Maintenance

- Check the alignment of the tailstock and adjust if needed.
- Inspect electrical connections and wiring for any signs of damage.
- Test the emergency stop button and other safety features.

Tools Required for Maintenance

- Clean rags and brushes
- Lubricants specified in the manual
- Wrenches for adjusting components

Safety Precautions

Safety should always be a priority when operating any machinery, including the Central Machinery Mini Lathe 03173. Here are essential safety tips to keep in mind:

Before Operating

- Read the operating manual thoroughly to familiarize yourself with the machine.
- Ensure that all guards are in place before starting the lathe.
- Wear appropriate personal protective equipment (PPE), including safety glasses and gloves.

During Operation

- Keep hands and loose clothing away from moving parts.
- Do not leave the lathe unattended while it is running.
- Always use the correct speed and feed rates for the material being machined.

After Operation

- Turn off the machine completely and unplug it after use.
- Clean the workspace and remove any debris to prevent accidents.
- Store tools and accessories in a designated area for safety.

Conclusion

The Central Machinery Mini Lathe 03173 is a versatile tool that can greatly enhance your machining

projects. By following this operating manual, you can set up, operate, and maintain your lathe effectively while ensuring a safe working environment. Whether you are creating intricate parts for a model or undertaking a DIY project, understanding the capabilities and proper use of this machine will lead to successful outcomes. Always remember to prioritize safety, and happy machining!

Frequently Asked Questions

What is the primary purpose of the Central Machinery Mini Lathe 03173?

The Central Machinery Mini Lathe 03173 is primarily used for precision turning of small metal or wood workpieces, allowing users to create cylindrical shapes, threads, and other detailed designs.

Where can I find the operating manual for the Central Machinery Mini Lathe 03173?

The operating manual for the Central Machinery Mini Lathe 03173 can typically be found on the manufacturer's website, or it may be included with the purchase of the lathe. Additionally, many users share PDF versions online on forums or DIY websites.

What safety precautions should I take when using the Central Machinery Mini Lathe 03173?

When using the Central Machinery Mini Lathe 03173, always wear safety goggles, keep long hair and loose clothing secured, ensure the work area is clean, and avoid distractions. It's also important to read the operating manual thoroughly to understand all safety guidelines.

What are common maintenance tips for the Central Machinery Mini Lathe 03173?

Common maintenance tips for the Central Machinery Mini Lathe 03173 include regularly lubricating moving parts, checking and tightening belts, cleaning the lathe after use, and inspecting the tool for wear and tear to ensure optimal performance.

How do I set up the Central Machinery Mini Lathe 03173 for the first time?

To set up the Central Machinery Mini Lathe 03173 for the first time, start by placing it on a stable workbench, level the machine, secure it with bolts if necessary, install the tailstock and tool rest, and ensure all electrical connections are properly made before powering it on.

Find other PDF article:

<https://soc.up.edu.ph/40-trend/files?ID=Oeq57-4894&title=mcquarrie-statistical-mechanics-solutions-chapter-1.pdf>

[Central Machinery Mini Lathe 03173 Operating Manual](#)

[Central SS Secondary School - TVDSB](#)

Need to find out when/where your child is playing? Here is a quick link to the TVRA schedule. Click here to access the website. New this year, our spiritwear will be produced by 519 ...

[Central London, London Real Estate Listings - REALTOR.ca](#)

Find 117 houses for sale in Central London, London, ON. Visit REALTOR.ca to see all the Central London, London, ON real estate listings on the MLS® Systems today! Prices starting at \$1 ▯.

Carleton University

We would like to show you a description here but the site won't allow us.

Central Secondary School - TVDSB

View All...

[Catholic Central High School](#)

The Ministry of Education has announced that it has granted approval and \$20.6 million in benchmark funding for a new elementary school and childcare centre in Middlesex Centre.

Visit Central Library | London Public Library - lpl.ca

Central Library is London's vibrant centre for culture, learning, community connections and creativity. Come for a visit! Whether you're meeting friends, taking in a great concert, spending ...

Homes for Sale - Central London | London Ontario Real Estate

Click on a central London neighbourhood to view homes for sale within that neighbourhood.

Central Public School - TVDSB

Online Registration for Kindergarten will begin on Monday January 23rd until Friday, February 10th 2023. Please visit www.tvdsb.ca/en/schools/kindergarten-registration.aspx. If you have ...

[London Central Secondary School - Wikipedia](#)

London Central Secondary School is a public secondary school located at the corner of Dufferin Avenue and Waterloo Street in downtown London, Ontario. It is a member of the Thames ...

Health Services for Central - centralhealthline.ca

3 days ago · Local health services, news, careers and events for Central, Ontario including Central, North York, Etobicoke, York Toronto, York Region and South Simcoe.

Central SS Secondary School - TVDSB

Need to find out when/where your child is playing? Here is a quick link to the TVRA schedule. Click here to access the website. New this year, our spiritwear will be produced by 519 ...

Central London, London Real Estate Listings - REALTOR.ca

Find 117 houses for sale in Central London, London, ON. Visit REALTOR.ca to see all the Central London, London, ON real estate listings on the MLS® Systems today! Prices starting at \$1 ▯.

[Carleton University](#)

We would like to show you a description here but the site won't allow us.

Central Secondary School - TVDSB

[View All...](#)

Catholic Central High School

The Ministry of Education has announced that it has granted approval and \$20.6 million in benchmark funding for a new elementary school and childcare centre in Middlesex Centre.

Visit Central Library | London Public Library - lpl.ca

Central Library is London's vibrant centre for culture, learning, community connections and creativity. Come for a visit! Whether you're meeting friends, taking in a great concert, spending ...

Homes for Sale - Central London | London Ontario Real Estate

Click on a central London neighbourhood to view homes for sale within that neighbourhood.

Central Public School - TVDSB

Online Registration for Kindergarten will begin on Monday January 23rd until Friday, February 10th 2023. Please visit www.tvdsb.ca/en/schools/kindergarten-registration.aspx. If you have ...

London Central Secondary School - Wikipedia

London Central Secondary School is a public secondary school located at the corner of Dufferin Avenue and Waterloo Street in downtown London, Ontario. It is a member of the Thames ...

Health Services for Central - centralhealthline.ca

3 days ago · Local health services, news, careers and events for Central, Ontario including Central, North York, Etobicoke, York Toronto, York Region and South Simcoe.

Unlock the full potential of your Central Machinery Mini Lathe 03173 with our comprehensive operating manual. Learn more about setup

[Back to Home](#)